

# BAYPOINT

## COMMERCE CENTER

ST PETERSBURG, FL 33702

## Office Space Available For Lease



15-building campus with over 700,000 RSF of total office space



Recently renovated common areas



Building lighting & monument signage



Multiple conference rooms available

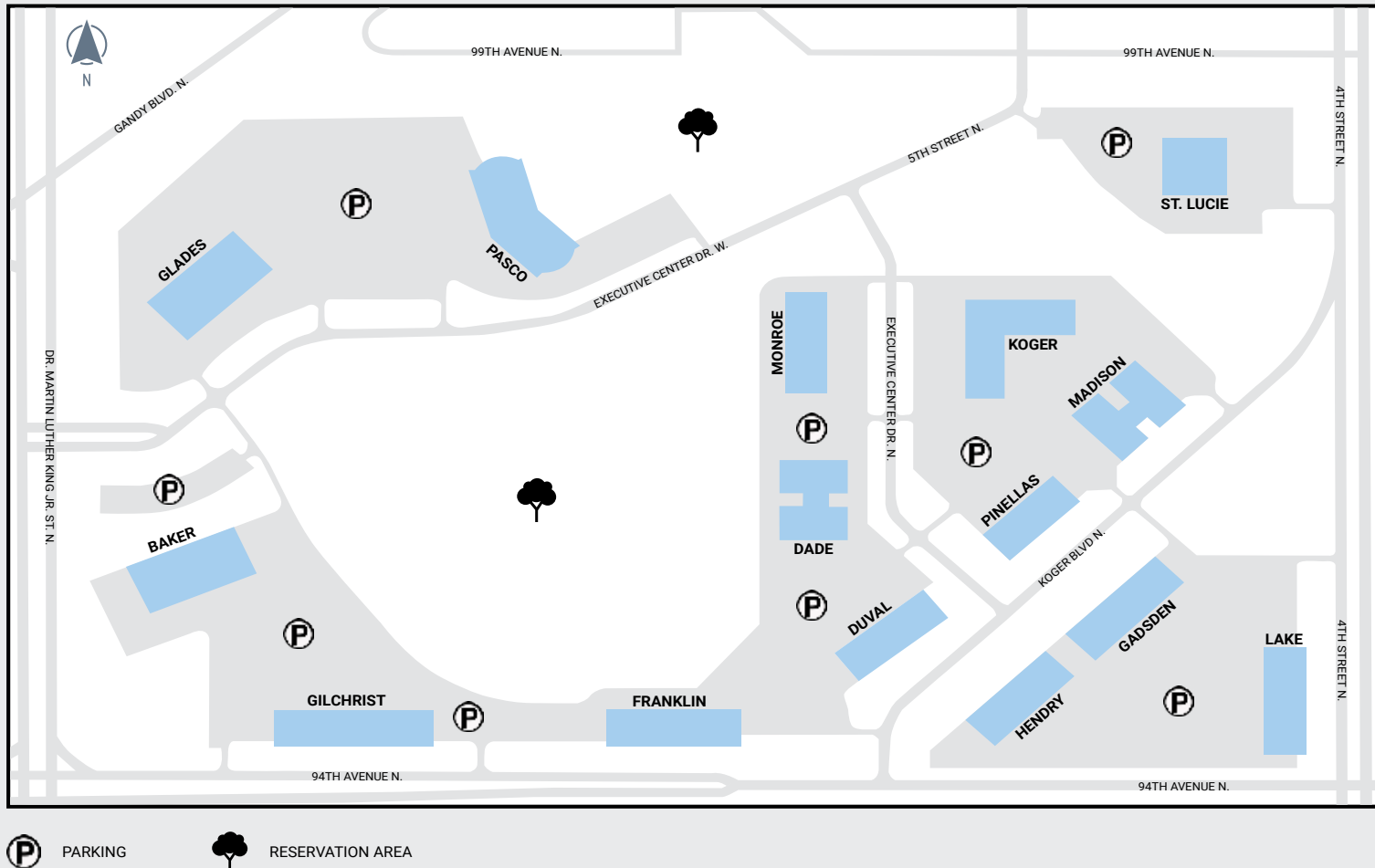
**Baypoint Commerce Center is 15-buildings in a beautiful 76 acre campus-style environment with over 700,000 RSF of office space.**

### Key Property Highlights

- + Campus has undergone an extensive multi-million dollar renovation and modernization project
- + Close to restaurants and shopping and equidistance to each of Tampa Bay's CBDs - Tampa, St. Petersburg & Clearwater
- + On-site property management and leasing
- + Excellent access and ample parking available (5/1,000 SF)
- + Over 10,000 SF of fully furnished conference rooms are available throughout the park



# Baypoint Commerce Center Overview



*Located at the Gandy Blvd, 9<sup>th</sup> St, 4<sup>th</sup> St & 94<sup>th</sup> Ave interchange, right at center of Pinellas County's most important connectivity to the surrounding Tampa & St. Petersburg areas.*

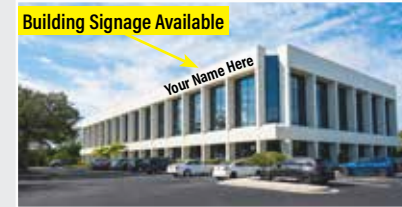
- » The Property is located directly off Gandy Boulevard in the Gateway Submarket.
- » Minutes away from Tampa's bay-crossing thoroughfares – the Gandy Bridge, Courtney Campbell Cswy. & I-275 (Howard Frankland Brdg.)
- » Access to nearly 2.9 million people with a 45-minute commute.
- » Equidistant to each of Tampa Bay's CBDs – Tampa, St. Petersburg and Clearwater.
- » Proximately to key retail corridors along Ulmerton Rd, Roosevelt Blvd, 9<sup>th</sup> St N and 4<sup>th</sup> St N.
- » The Gateway submarket features approximately 6,651 businesses with an employment base of 89,993 people.
- » The submarket's accessibility to the region's expanding transportation infrastructure makes for an ideal location for businesses to attract skilled labor.

## 2.9 MILLION PEOPLE LIVE WITHIN A 45 MINUTE COMMUTE OF THE PROPERTY

- 377,243 people live within a 15 minute drive
- 1,590,049 people live within a 30 minute drive
- 2,969,157 people live within a 45 minute drive

## NEARBY AMENITIES WITHIN A TWO MILES

- 66 Apartment complexes
- ±11,120 Rental units
- Numerous shopping centers and restaurants within two miles of the Property



**BAKER**  
888 EXECUTIVE CTR DR  
**TOTAL RSF - 71,103 RSF**  
Available RSF 49,577 RSF



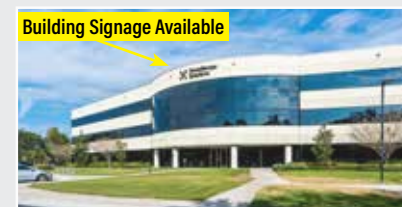
**FRANKLIN**  
7010 94<sup>TH</sup> AVE N  
**TOTAL RSF - 36,687 RSF**  
Available RSF 13,899 RSF



**GILCHRIST**  
801 94<sup>TH</sup> AVE N  
**TOTAL RSF - 48,544 RSF**  
Available RSF 45,681 RSF



**LAKE**  
9400 4<sup>TH</sup> ST N  
**TOTAL RSF - 34,698 RSF**  
Available RSF 10,226 RSF



**PASCO**  
808 EXECUTIVE CTR DR  
**TOTAL RSF - 83,373 RSF**  
Available RSF 56,786 RSF



**DADE**  
9720 EXECUTIVE CTR DR  
**TOTAL RSF - 36,558 RSF**  
Available RSF 8,711 RSF



**GADSDEN**  
9549 KOGER BLVD N  
**TOTAL RSF - 36,929 RSF**  
Available RSF 9,675 RSF



**HENDRY**  
9455 KOGER BLVD N  
**TOTAL RSF - 32,861 RSF**  
Available RSF 1,783 RSF



**MADISON**  
9600 KOGER BLVD N  
**TOTAL RSF - 39,325 RSF**  
Available RSF 6,458 RSF



**PINELLAS**  
9500 KOGER BLVD N  
**TOTAL RSF - 23,295 RSF**  
Available RSF 3,782 RSF



**DUVAL**  
9450 KOGER BLVD N  
**TOTAL RSF - 30,426 RSF**  
*Fully Leased*



**GLADES**  
877 EXECUTIVE CTR DR  
**TOTAL RSF - 74,199 RSF**  
Available RSF 7,599 RSF



**KOGER**  
9721 EXECUTIVE CTR DR  
**TOTAL RSF - 48,946 RSF**  
*Fully Leased*



**MONROE**  
9720 EXECUTIVE CTR DR  
**TOTAL RSF - 29,704 RSF**  
Available RSF 22,268 RSF

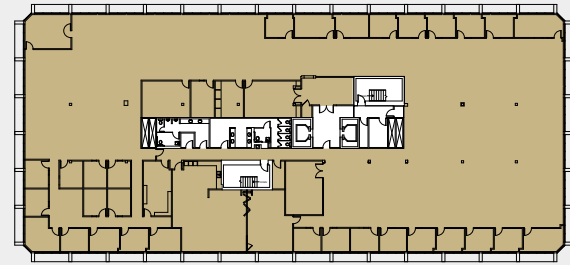
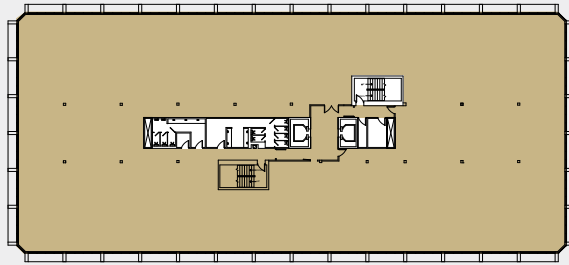


**ST LUCIE**  
9800 4<sup>TH</sup> ST N  
**TOTAL RSF - 55,428 RSF**  
Available RSF 19,910 RSF

# Baypoint Commerce Center Availabilities

**BAKER - 888 EXECUTIVE CTR DR**

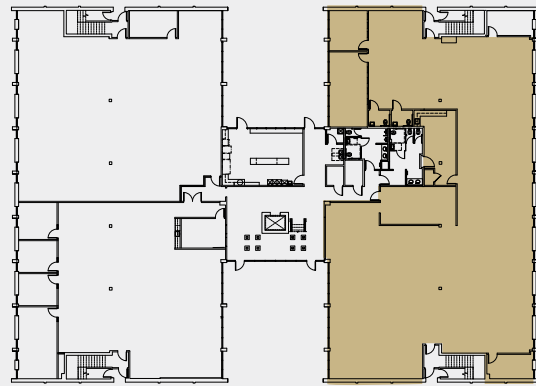
**SUITE 200**  
24,835 RSF



**SUITE 300**  
24,742 RSF  
(PLUG & PLAY)

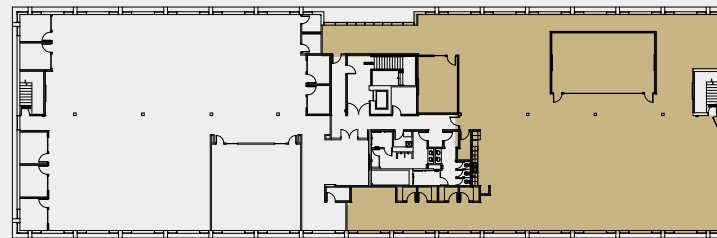
**DADE - 9620 EXECUTIVE CTR DR**

**SUITE 150**  
8,711 RSF

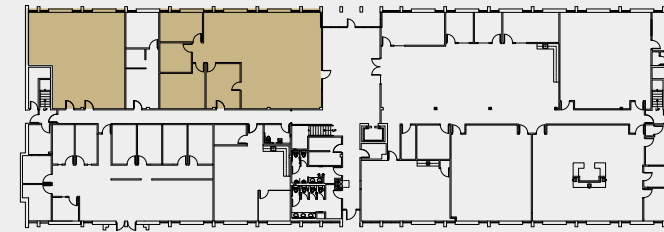


**GADSDEN - 9549 KOGER BLVD N**

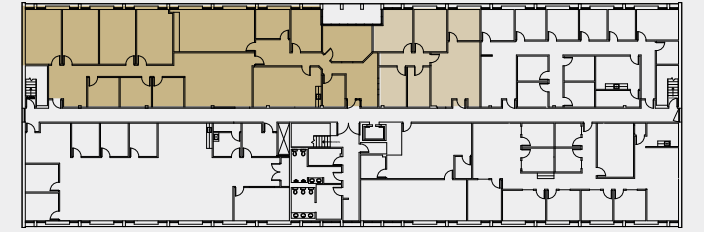
**SUITE 210 - 9,675 RSF**



**SUITE 115** 1,299 RSF  
**SUITE 105** 2,445 RSF  
**LAKE - 9400 4<sup>TH</sup> ST N**

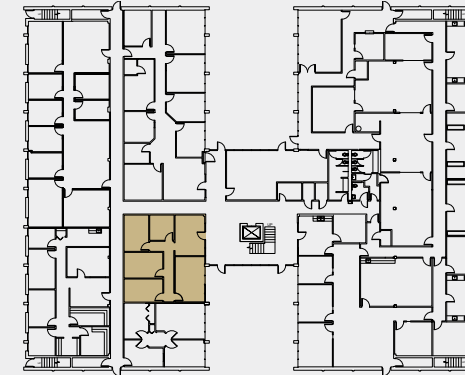


**SUITE 210\*** - 4,945 RSF  
**SUITE 205\*** - 1,537 RSF  
*\*UP TO 6,482 RSF CONTIGUOUS*



**MADISON - 9600 KOGER BLVD N**

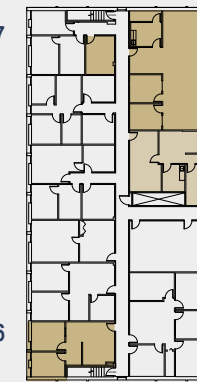
**SUITE 105**  
1,253 RSF



*\*UP TO 3,687 RSF CONTIGUOUS*

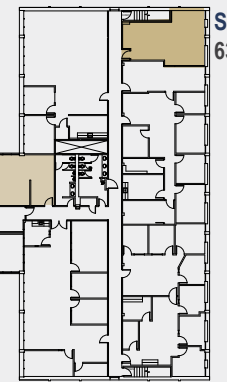
**SUITE 227\*** - 1,678 RSF  
**SUITE 203\*** - 2,009 RSF

**SUITE 237**  
194 RSF



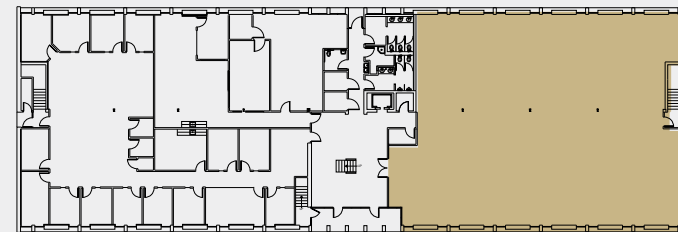
**SUITE 205**  
639 RSF

**SUITE 206**  
685 RSF

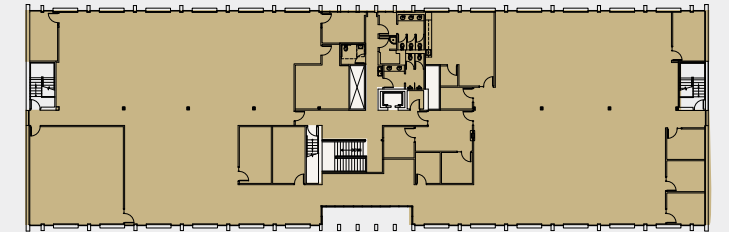


**MONROE - 9720 EXECUTIVE CTR DR**

**SUITE 150 - 7,181 RSF**



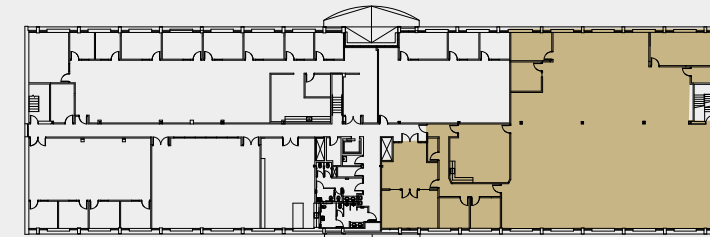
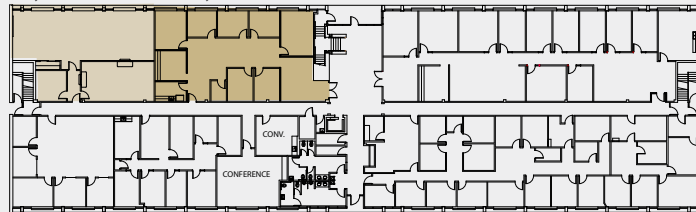
**SUITE 200 - 15,087 RSF**



*\*UP TO 4,738 RSF CONTIGUOUS*

**SUITE 130\*** 2,122 RSF  
**SUITE 120\*** 2,616 RSF

**FRANKLIN - 701 94<sup>TH</sup> AVE N**



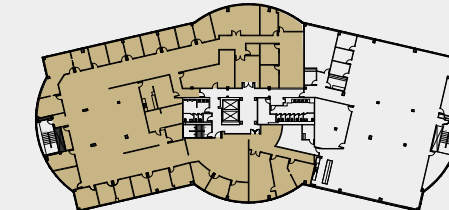
**SUITE 200 - 9,161 RSF**

**PASCO - 805 EXECUTIVE CTR DR**

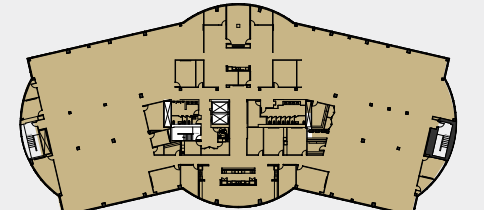
**SUITE 110 - 5,550 RSF**



**SUITE 220 - 19,914 RSF (DIVISIBLE)**

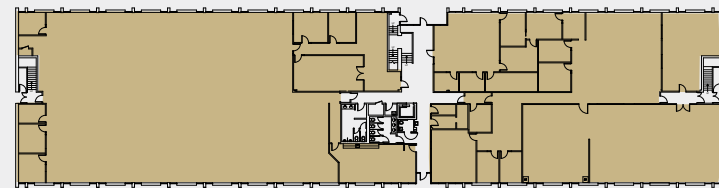


**SUITE 300 - 31,322 RSF**

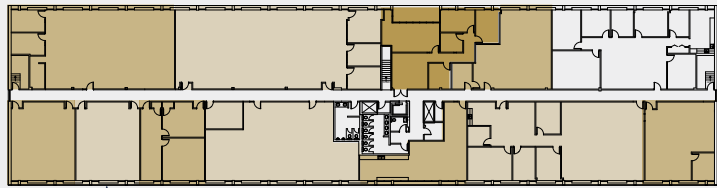


**GILCHRIST - 801 94<sup>TH</sup> AVE N**

**SUITE 100 - 24,301 RSF**



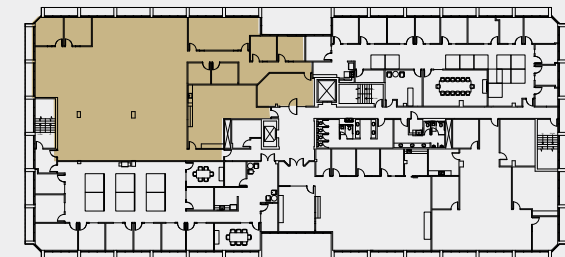
**SUITE 209** 2,881 RSF  
**SUITE 207** 3,821 RSF  
**SUITE 204** 1,540 RSF  
**SUITE 203** 1,367 RSF



**SUITE 210** 1,185 RSF  
**SUITE 215** 1,194 RSF  
**SUITE 220** 1,194 RSF  
**SUITE 225** 2,602 RSF  
**SUITE 230** 1,044 RSF  
**SUITE 200** 3,265 RSF  
**SUITE 201** 1,287 RSF

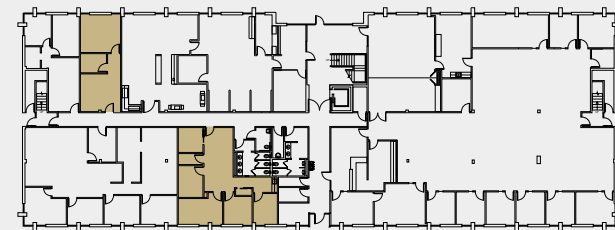
**GLADES - 877 EXECUTIVE CTR DR**

**SUITE 250 - 7,599 RSF**



**HENDRY - 9455 KOGER BLVD N**

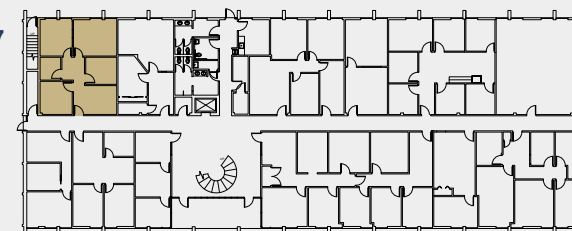
**SUITE 113 - 622 SF**



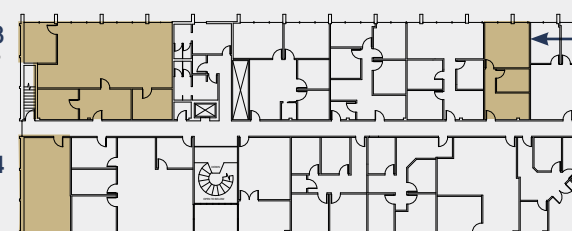
**SUITE 102 - 1,161 SF**

**PINELLAS - 9500 KOGER BLVD N**

**SUITE 107**  
947 RSF



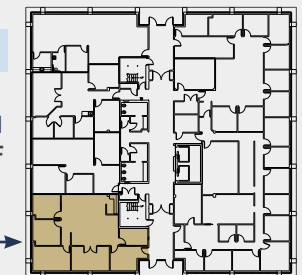
**SUITE 203**  
1,711 RSF



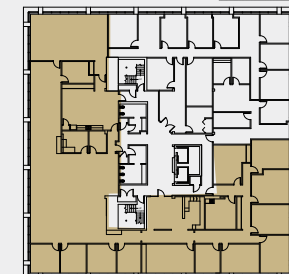
**SUITE 204**  
566 RSF

**ST LUCIE - 9800 4<sup>TH</sup> ST N**

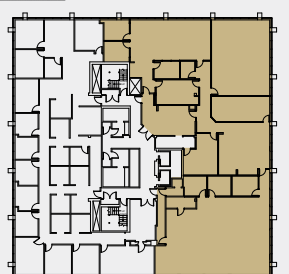
**SUITE 101**  
2,040 RSF



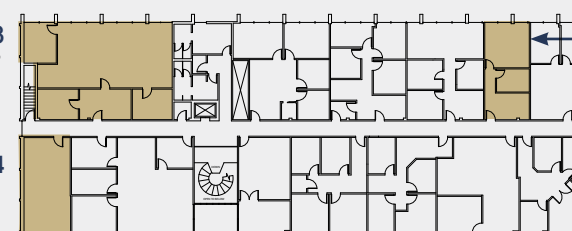
**SUITE 300**  
9,700 RSF



**SUITE 402**  
8,170 RSF  
(PLUG & PLAY)

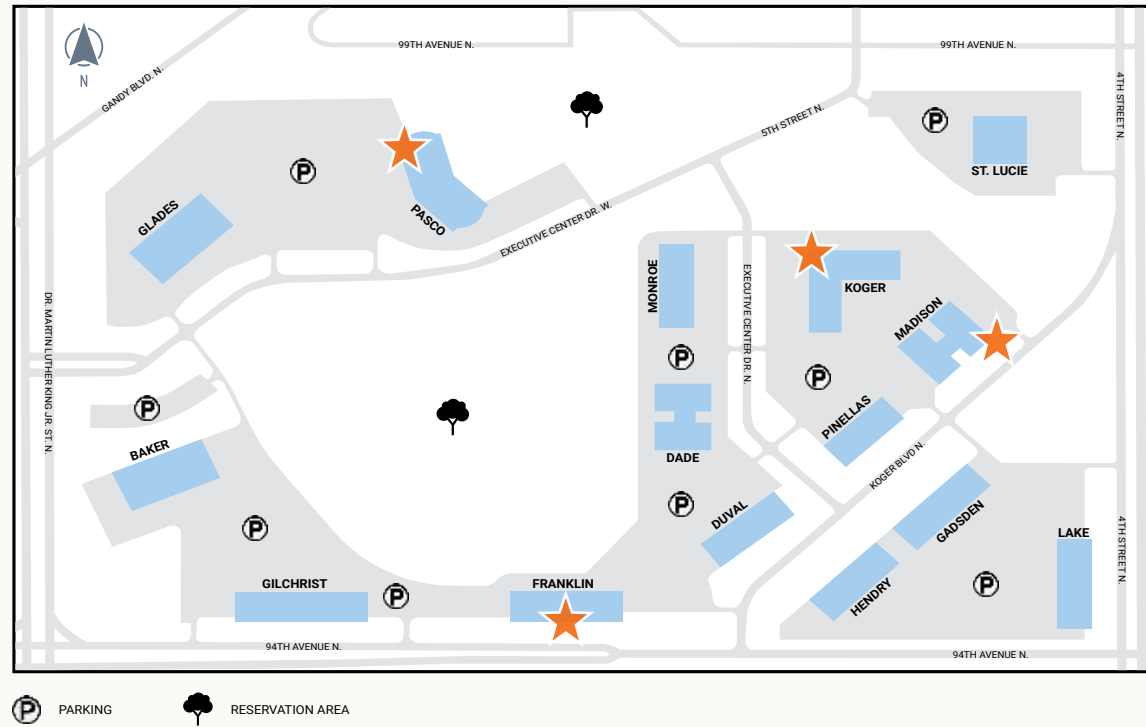


**SUITE 222**  
558 RSF

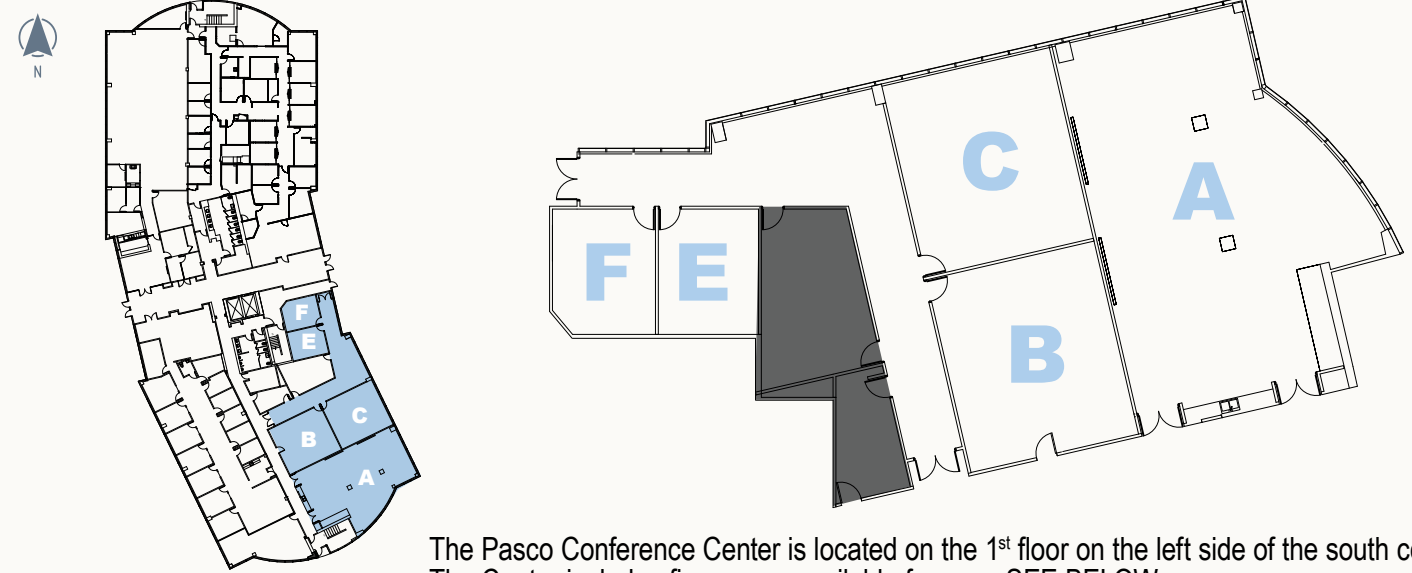


# Baypoint Commerce Center Conference Rooms

Conference Rooms are available for tenants' use at no charge, and may be reserved through our online work order system, MRI Angus.



## PASCO CONFERENCE CENTER 805 EXECUTIVE CENTER DR W



The Pasco Conference Center is located on the 1<sup>st</sup> floor on the left side of the south corridor. The Center includes five rooms available for use. SEE BELOW

### FRANKLIN CONFERENCE ROOM 701 94<sup>TH</sup> AVE N

The Franklin Conference Room is located on the 1<sup>st</sup> floor in the east wing. It contains a conference table with 12 chairs. There is a counter along one wall and a wall-mounted whiteboard.



### KOGER CONFERENCE ROOM 9721 EXECUTIVE CENTER DR N

The Koger Conference Room is located on the 1<sup>st</sup> floor in the east wing. It contains a conference table with 12 chairs.



### MADISON CONFERENCE ROOM 9600 KOGER BLVD

The Koger Conference Room is located on the 2<sup>nd</sup> floor just left from the stairs or elevator. It is furnished with a conference table and 16 chairs.



### PASCO CONFERENCE ROOM - A

Located on the 1<sup>st</sup> floor at the end of the south corridor. It is furnished with 146 chairs in a seminar-style setup, with a counter with a sink along one wall.



### PASCO CONFERENCE ROOM - B

Located on the 1<sup>st</sup> floor inside the Conference Center corridor. It is furnished classroom-style with 12 tables and 24 chairs.



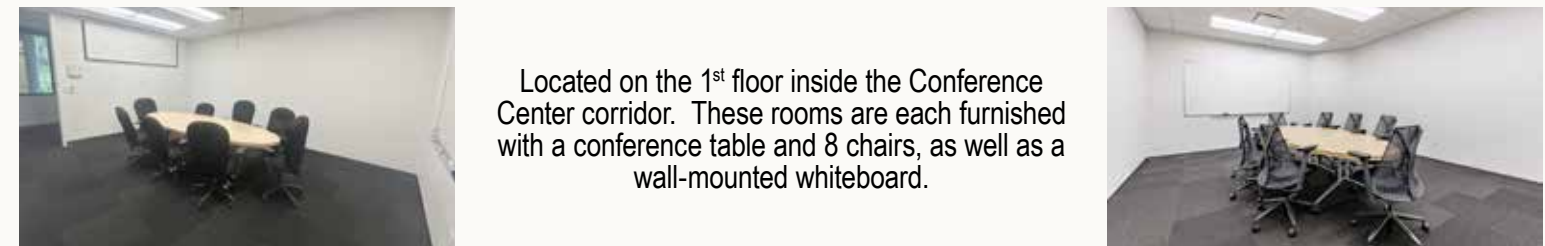
### PASCO CONFERENCE ROOM - C

Located on the 1<sup>st</sup> floor inside the Conference Center corridor. It is furnished 13 classroom tables and 24 chairs with a counter along one wall.



### PASCO CONFERENCE ROOM - E & F

Located on the 1<sup>st</sup> floor inside the Conference Center corridor. These rooms are each furnished with a conference table and 8 chairs, as well as a wall-mounted whiteboard.

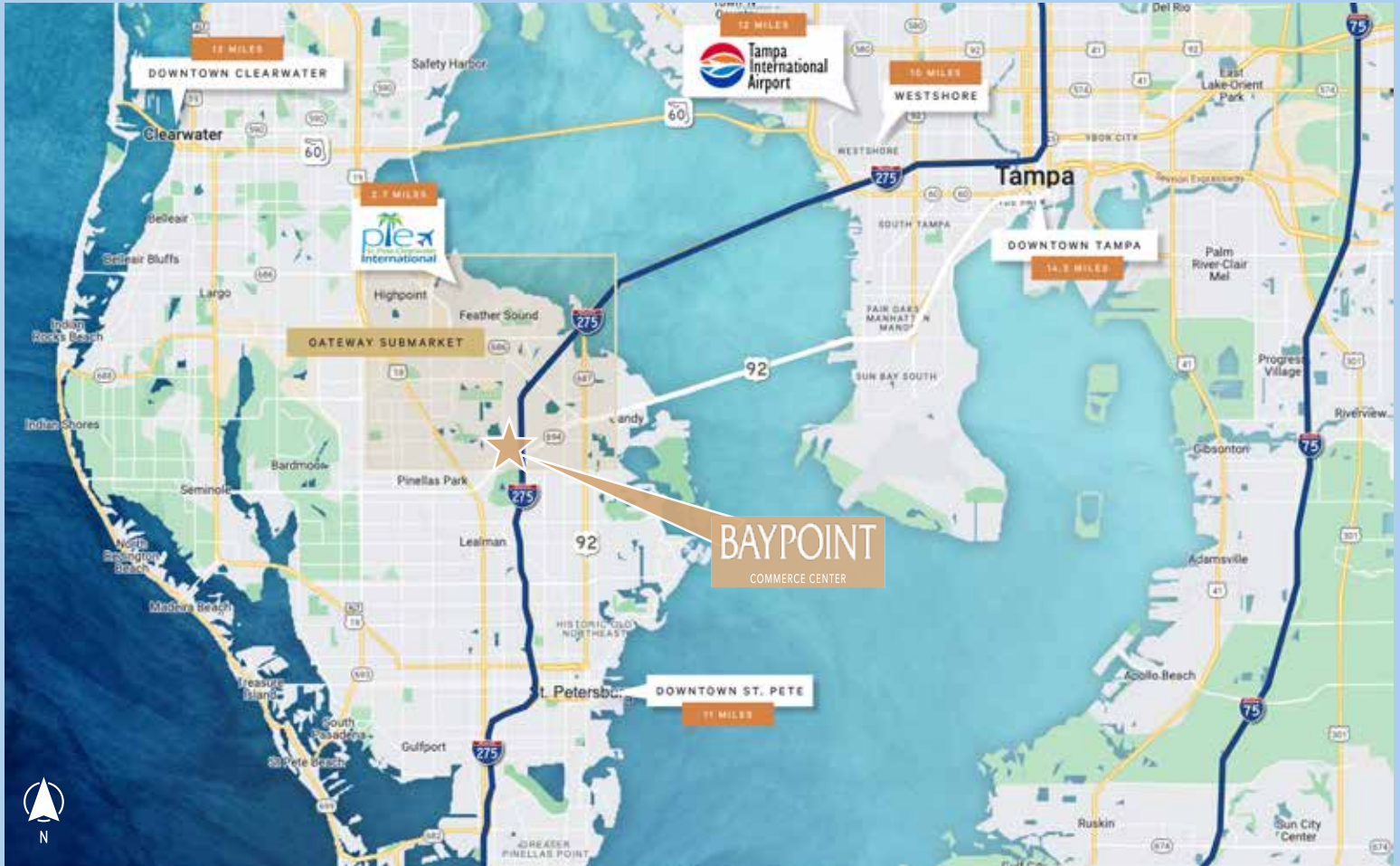


# BAYPOINT

COMMERCE CENTER  
ST PETERSBURG, FL 33702

## Office Space Available For Lease

Video



### TRANSPORTATION

Interstate 275, Howard Frankland Bridge, Selmon Exwy, Gandy Blvd, Courtney Campbell Bridge, 4<sup>th</sup> St, 9<sup>th</sup> St, 94<sup>th</sup> Ave & Roosevelt Blvd

### RESTAURANTS

Noble Crust of St. Petersburg, Miller's Ale House, Mori Sushi, Starbucks

### FITNESS / GYMS

Mayweather Boxing + Fitness Studio, Anytime Fitness, Elevate St. Pete, Epic Health and Fitness

### RETAIL

Publix at Gateway Crossing, TJ Maxx, Tuesday Morning, CVS Pharmacy, Target, PetSmart

### DESTINATIONS

St. Pete - Clearwater Int'l Airport, Tampa Int'l Airport, St. Pete Pier, Tropicana Field, Sunken Gardens

### HOTELS

Comfort Inn & Suites Northeast - Gateway, Hilton St. Petersburg Carillon Park, St. Petersburg Marriott Clearwater, The Karol Hotel, St. Petersburg Clearwater

## CONTACTS

**Barry Hanerfeld**  
Senior Vice President  
+1 813 334 7561  
barry.hanerfeld@cbre.com

**Molly Molloy Catlett**  
First Vice President  
+1 813 273 8465  
mollymolloy.catlett@cbre.com



THE FEIL ORGANIZATION

CBRE, Inc. | Licensed Real Estate Broker

# CBRE

© 2026 CBRE, Inc. All rights reserved. This information has been obtained from sources believed reliable but has not been verified for accuracy or completeness. CBRE, Inc. makes no guarantee, representation or warranty and accepts no responsibility or liability as to the accuracy, completeness, or reliability of the information contained herein. You should conduct a careful, independent investigation of the property and verify all information. Any reliance on this information is solely at your own risk. CBRE and the CBRE logo are service marks of CBRE, Inc. All other marks displayed on this document are the property of their respective owners, and the use of such marks does not imply any affiliation with or endorsement of CBRE. Photos herein are the property of their respective owners. Use of these images without the express written consent of the owner is prohibited.