



INDUSTRIAL SPACE | FOR LEASE

1838, 1850 & 1852 CHESPAK DRIVE | GASTONIA

Seven units, ranging from 1,500 SF to 4,500 SF, are available for lease in close proximity to I-85.

- Perfect for storage, business or hobby
- Automotive business limited to certain types
- 12'x14' Drive-in doors
- 15'-17' clear heights
- Climate controlled units with restrooms are available
- Gated with 24/7 access

BRENDON KIPINA

c 704 575 0910

bkipina@mecacommercial.com

JAMES RICE

c 859 953 1065

jrice@mecacommercial.com



MECA
COMMERCIAL REAL ESTATE



PROPERTY INFORMATION

1838 CHESPAK DRIVE - UNIT A

- 2,250 SF
- \$2,231.25 Monthly
- \$10.50 Rate/SF

1838 CHESPAK DRIVE - UNIT B

- 1,275 SF
- \$1,168.75 Monthly
- \$11.00 Rate/SF

1838 CHESPAK DRIVE - UNIT E

- 1,275 SF
- \$1,168.75 Monthly
- \$11.00 Rate/SF

1848 CHESPAK DRIVE - UNIT B

- 1,500 SF
- \$1,125 Monthly
- \$9.00 Rate/SF
- No Restroom

1850 CHESPAK DRIVE - UNIT E

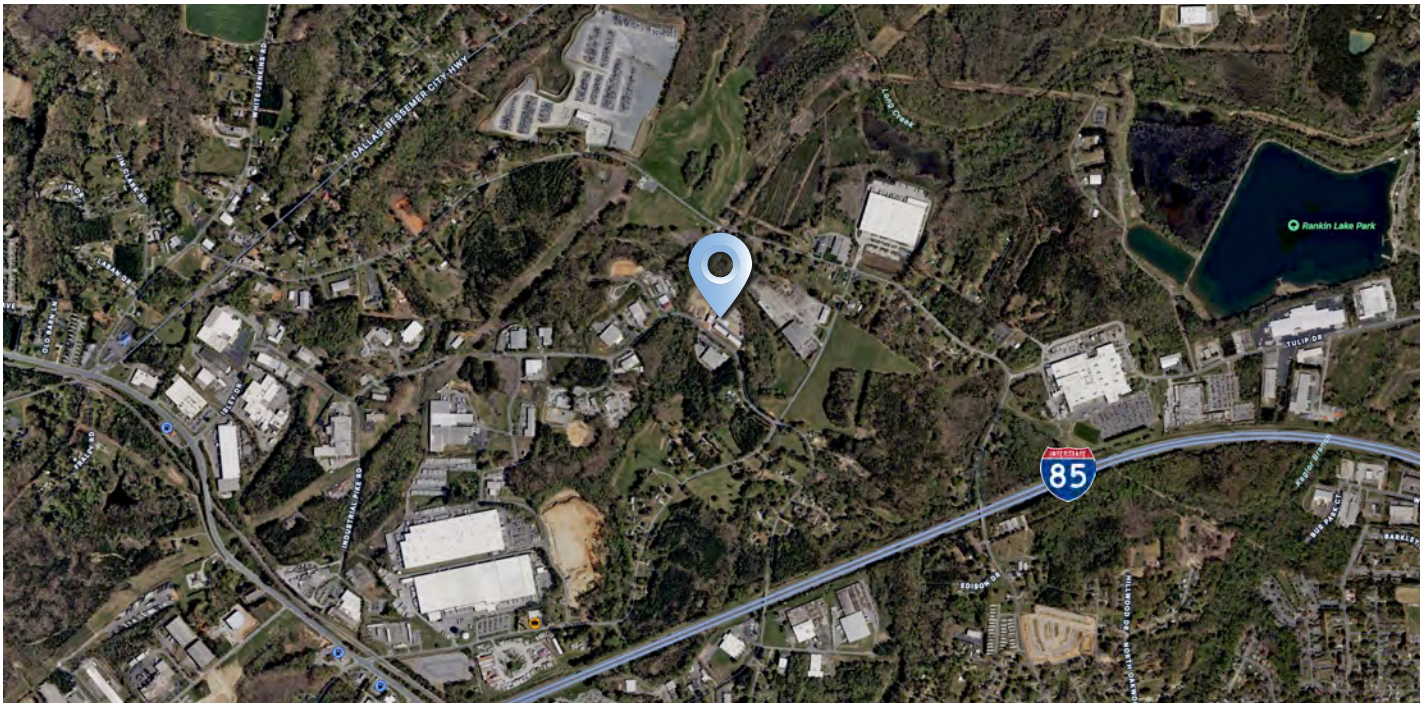
- 1,500 SF
- \$1,168.75 Monthly
- \$11.00 Rate/SF

1850 CHESPAK DRIVE - UNIT C

- 1,500 SF
- \$1,168.75 Monthly
- \$11.00 Rate/SF

1852 CHESPAK DRIVE

- 4,500 SF
- \$3,750 Monthly
- \$10.00 Rate/SF



mecacommercial.com

© 2024 Metro Realty, LLC. All rights reserved. Metro Realty, LLC fully supports the principles of the Fair Housing Act and the Equal Opportunity Act.

*The land acreage and/or building square footage was obtained from the County's Geographical Information System or other electronic resources. For exact square footage and/or acreage, we recommend that prior to purchase, a prospective Buyer/Tenant obtain a boundary survey or have the building measured professionally.

MECA Commercial Real Estate
102 Main Street, Suite 110
McAdenville, NC 28101
704 971 2000



MECA
COMMERCIAL REAL ESTATE