



H.M. POOLE BUILDING

9834 GENESEE AVENUE

81,954 SF Medical Office Building

Available for Lease



9834 Genesee Avenue, La Jolla CA 92037



Scripps Health is one of the premier healthcare systems serving San Diego County, with campuses in Encinitas, Torrey Pines, La Jolla, Hillcrest, and Chula Vista. Consistently rated one of the top health systems in the country, Scripps Health is dedicated to quality, safe, cost-efficient, socially responsible health care for everyone they serve.

The H.M. Poole Building at Scripps Memorial Hospital La Jolla is a vital part of the hospital's comprehensive healthcare campus, providing a convenient, collaborative environment for healthcare providers and patients. The building is a modern, patient-friendly space designed to enhance access to a wide range of services.

Scripps Health is consistently recognized for excellence in patient care, earning accolades for safety, quality, and innovation. Choosing to establish a practice in H.M. Poole Building at Scripps Memorial Hospital La Jolla positions healthcare providers at the center of a thriving, respected medical community that prioritizes patient care, innovation, and collaboration.

PROPERTY HIGHLIGHTS



Abundant Parking in Structured Lots at a Ratio of 5 Stalls per 1,000 RSF



Convenient Access off the I-5 Freeway Broadens the Patient Catchment Area to a Regional Scale



Full Service Gross Rent, net of Electricity



Situated in the Heart of San Diego, the H.M. Poole Building Serves as a Central Hub for Medical Providers



On Campus of Scripps Memorial Hospital La Jolla, a 300+ Bed Hospital Serving Over 120,000 Patients Annually

AVAILABILITIES

1ST FLOOR

SUITE #	SF	NOTES	RATE
101	1,577 SF	5 Offices Open Office Nurse Station	\$4.45/SF FSG
110	3,389 SF	Former Radiology Office Lead Lined Radiology Room Recovery Room 4 Offices Break Room 4 Storage Rooms Bathroom Waiting Room	\$4.45/SF FSG
111	1,936 SF	Shell Condition Ready for Medical Buildout	\$4.45/SF FSG
101/111	3,513 SF	Contiguous Availability	\$4.45/SF FSG
125	2,588 SF	Shell Condition ready for medical Buildout	\$4.45/SF FSG

2ND FLOOR

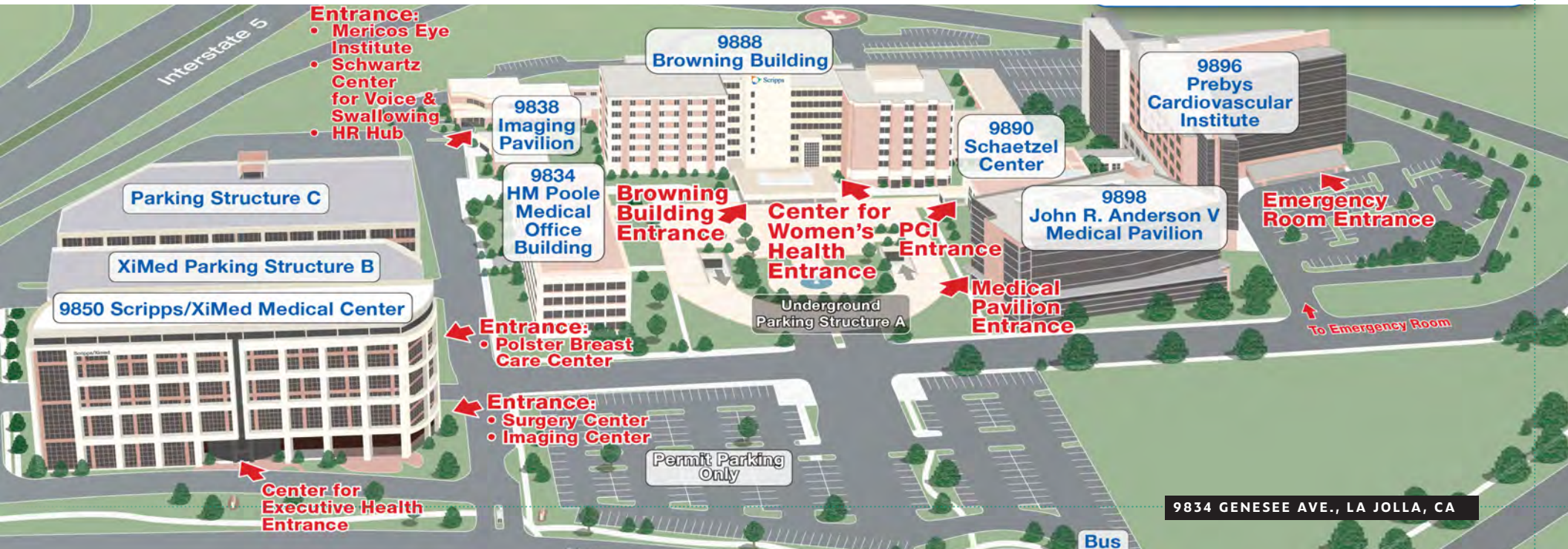
SUITE #	SF	NOTES	RATE
221	1,198 DF	2 Offices 2 Exam Rooms Waiting Room Reception Room	\$4.45/SF FSG

3RD FLOOR

SUITE #	SF	NOTES	RATE
326	1,969 SF	Former OBGYN Office 5 Exam Rooms Bathroom Lab Nurse Station 2 Offices Waiting Room Reception Room	\$4.45/SF FSG

4TH FLOOR

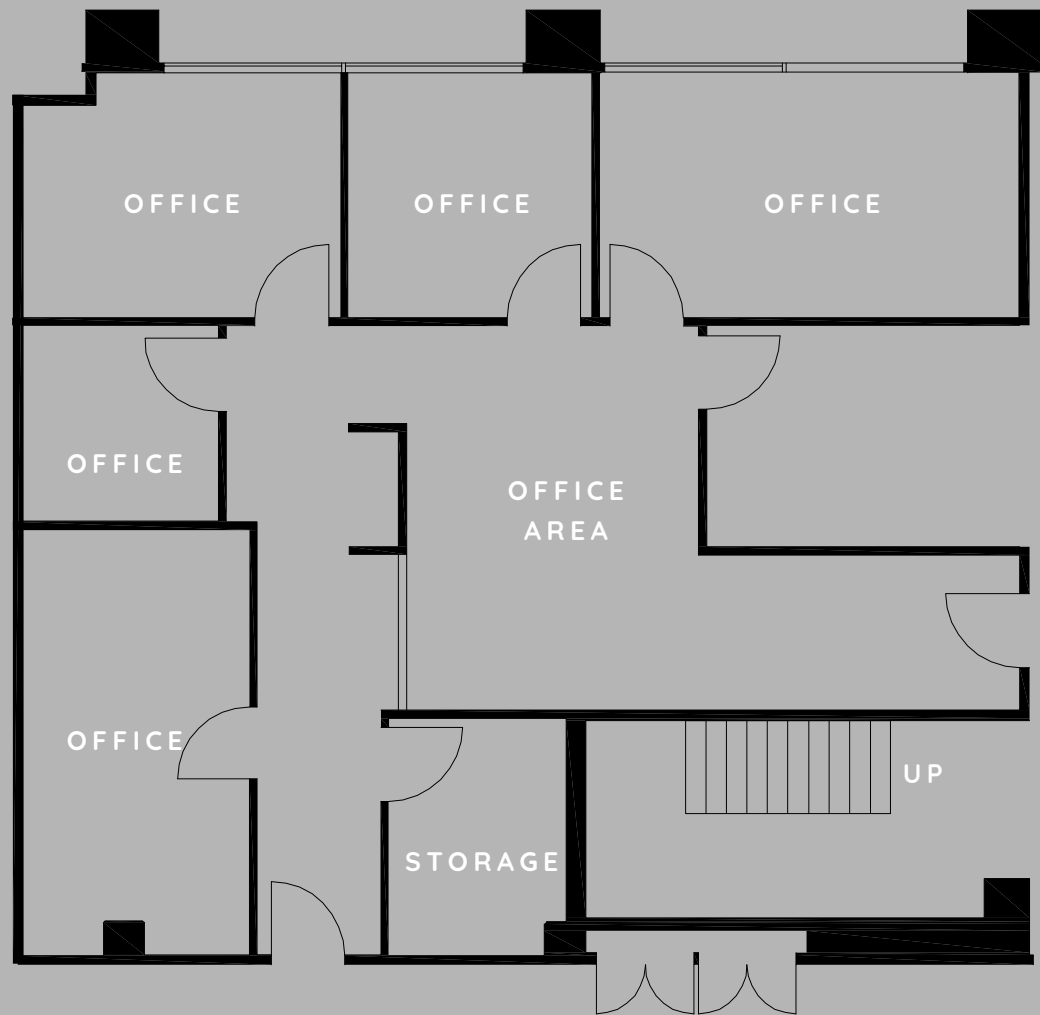
SUITE #	SF	NOTES	RATE
427	1,961 SF	Former Therapist Office 6 Offices Bathroom Waiting Room Reception Room New LVT Flooring & Paint	\$4.45/SF FSG



SUITE 101

1,577 SF
\$4.45/SF FSG

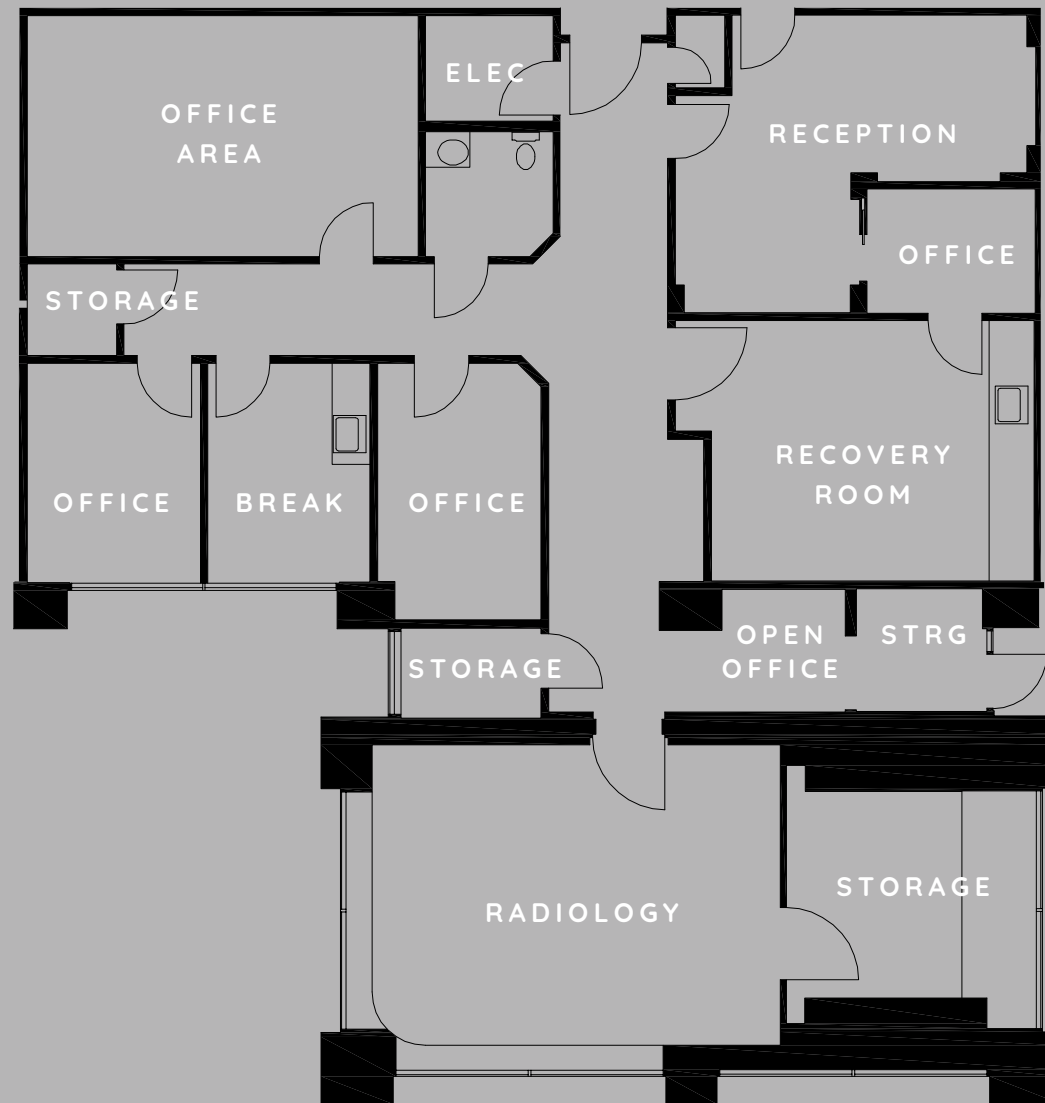
- 5 Offices
- Open Office
- Nurse Station



SUITE 110

3,389 SF
\$4.45/SF FSG

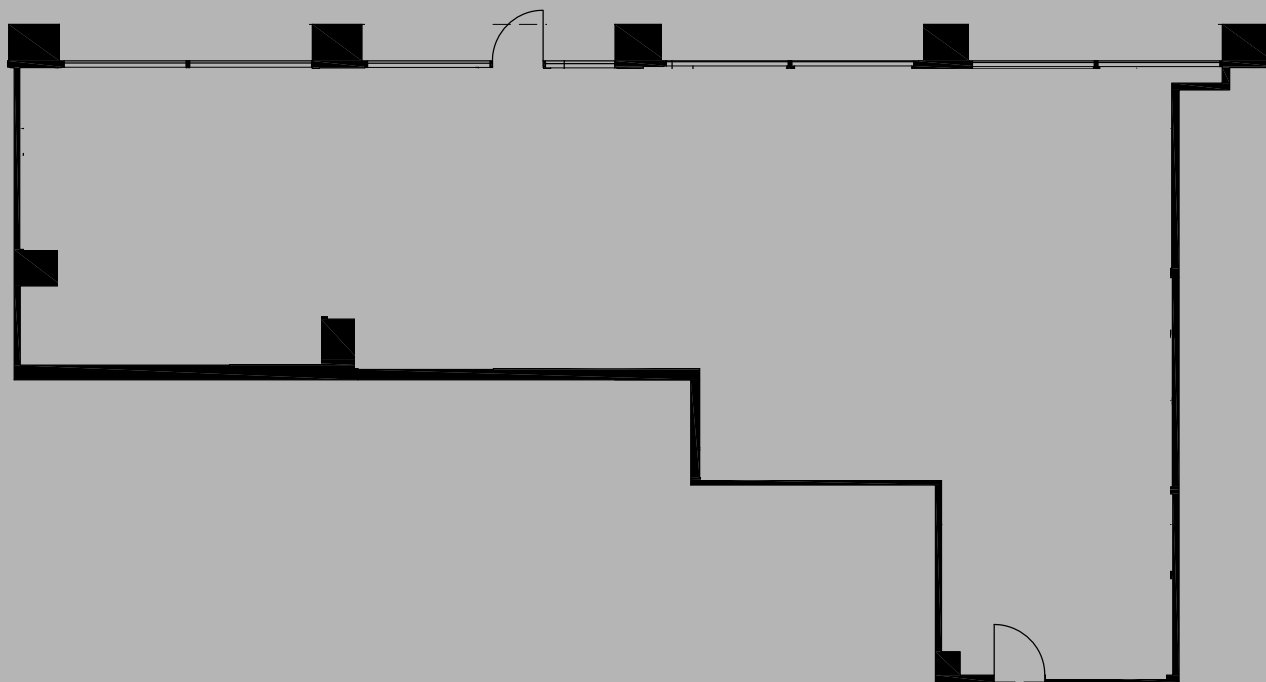
- Former Radiology Office
- Lead-Lined Radiology Room
- Recovery Room
- 4 Offices
- Break Room
- 4 Storage Rooms
- Bathroom
- Waiting Room



SUITE 111

1,936 SF
\$4.45/SF FSG

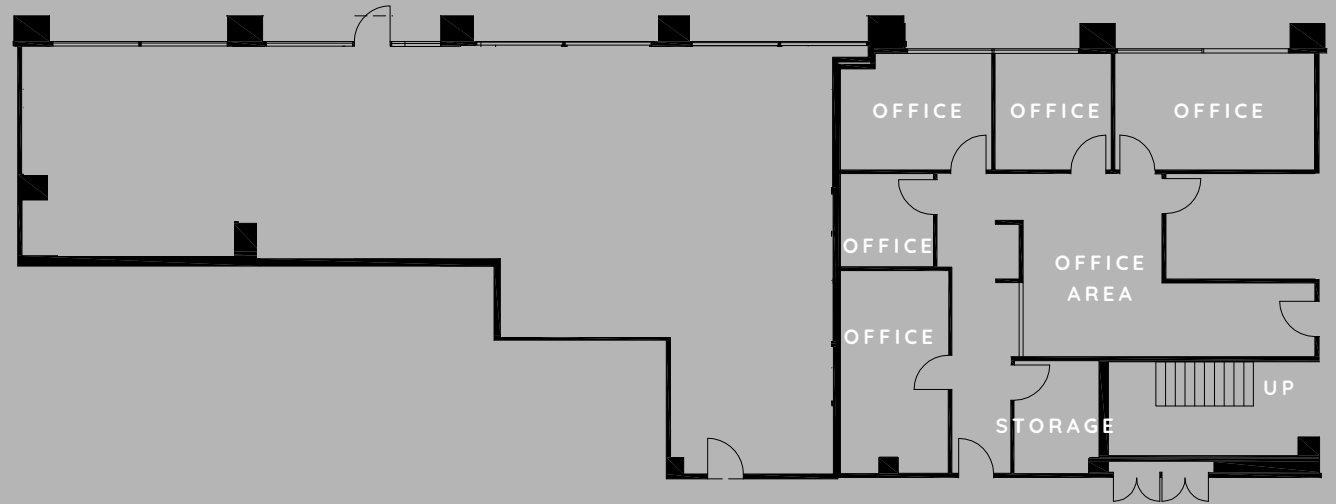
- Shell Condition
- Ready for Medical Buildout



SUITE 101 & 111

3,513 SF
\$4.45/SF FSG

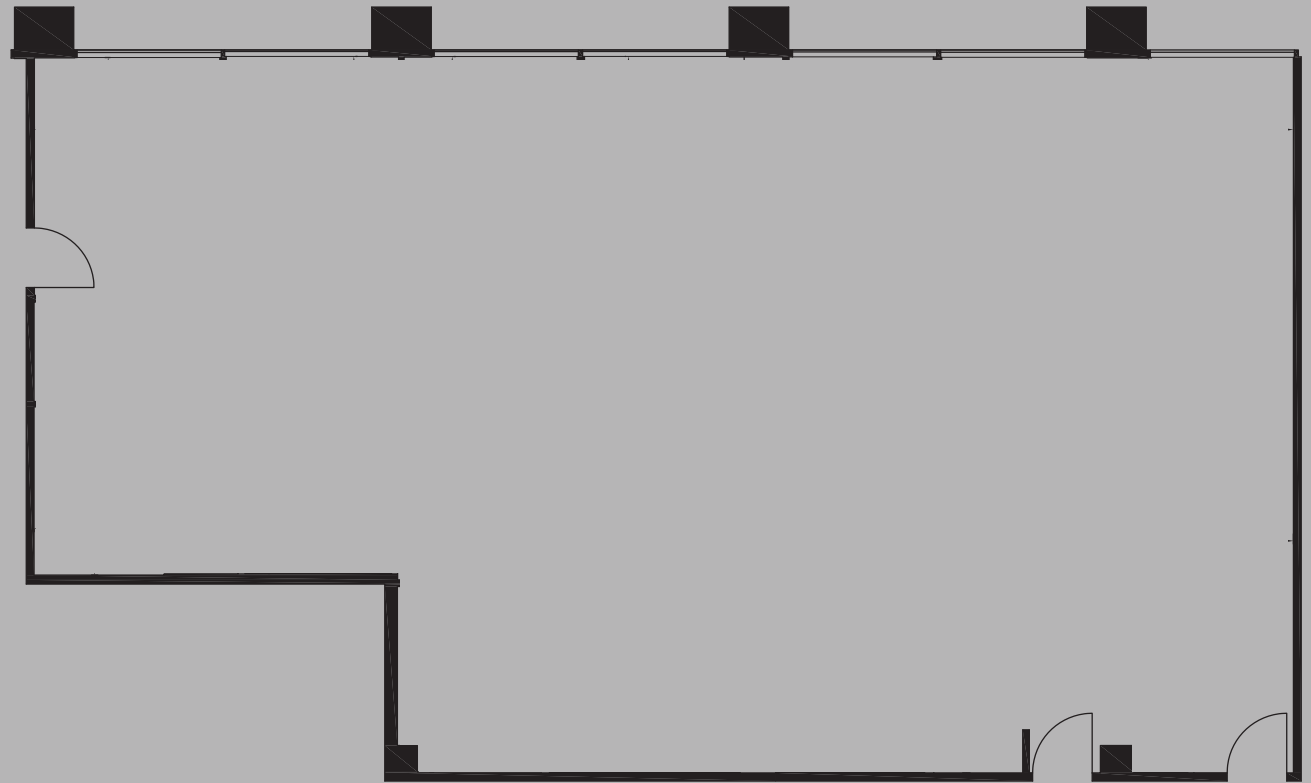
- Contiguous Availability



SUITE 125

2,588 SF
\$4.45/SF FSG

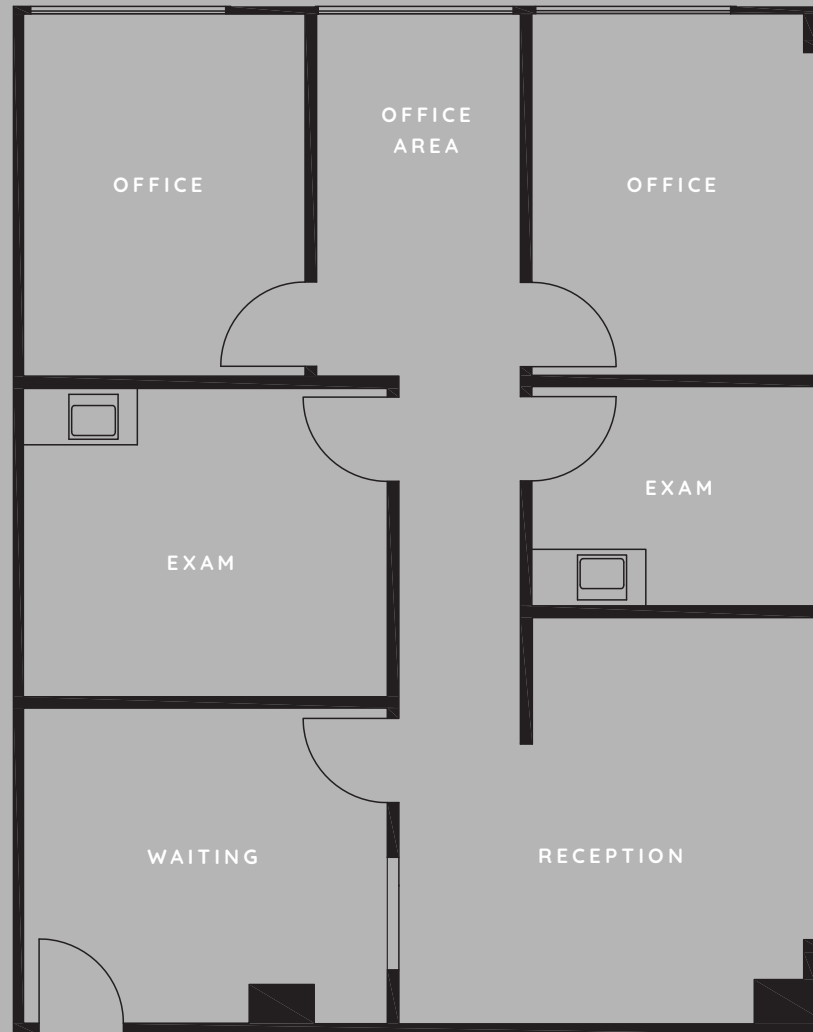
- Shell Condition
- Ready for Medical Buildout



SUITE 221

1,198 SF
\$4.45/SF FSG

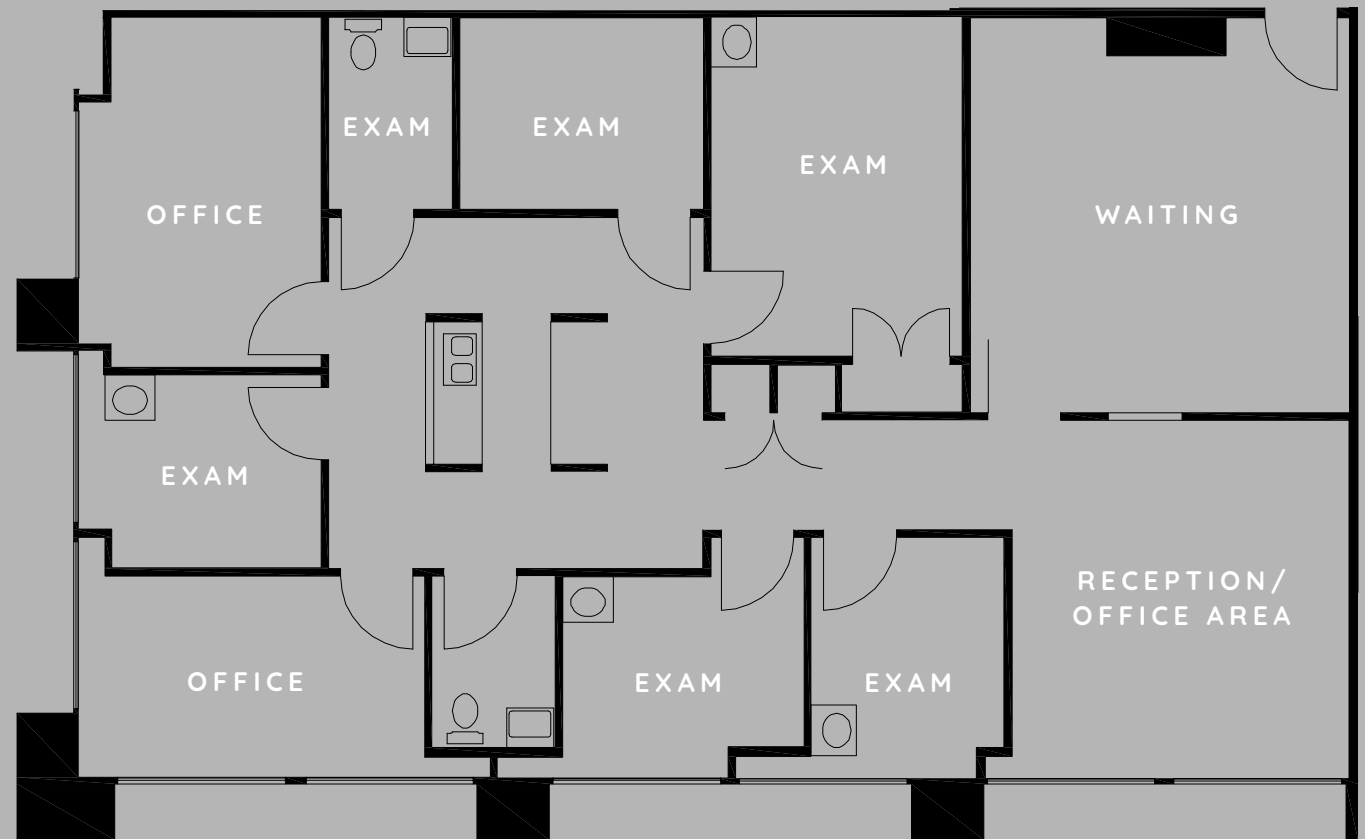
- 2 Exam Rooms
- 2 Offices
- Waiting Room
- Reception Room



SUITE 326

1,969 SF
\$4.45/SF FSG

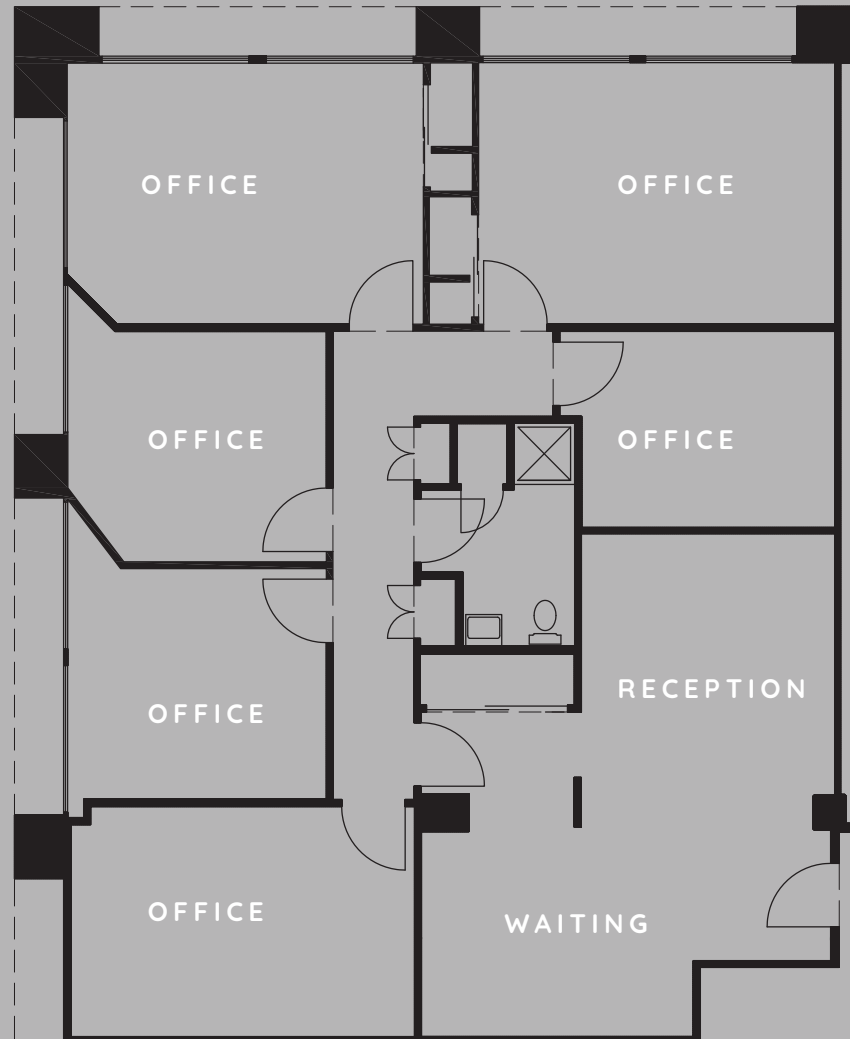
- Former OBGYN Office
- 5 Exam Rooms
- Bathroom
- Lab
- Nurse Station
- 2 Offices
- Waiting Room
- Reception Room



SUITE 427

1,961 SF
4.45/SF FSG

- Former Therapist Office
- 6 Offices
- Bathroom
- Waiting Room
- Reception Room
- New LVT Flooring & Paint



NEARBY AMENITIES

UC San Diego



LA JOLLA
POOLE BUILDING



Westfield



The Shops at La
Jolla Village



la jolla
VILLAGE SQUARE



DEMOGRAPHICS

*Data within a 20 mile radius. ESRI 2024

821,941

Total Population

\$112,469

Median Household Income

27

% of Graduate Degrees

\$9,496.35

Average Healthcare Spending

37

Median Age

\$9,496.35

% of White Collar Workers



NEARBY HEALTHCARE

- 1 Scripps Clinic La Jolla 1.13 Mi | 5 Min
- 2 Thornton Hospital 1.06 Mi | 6 Min
- 3 Scripps Green Hospital 1.91 Mi | 8 Min
- 4 Scripps Clinic Del Mar Hospital 5.30 Mi | 12 Min
- 5 Scripps Carmel Valley 5.30 Mi | 12 Min



9834 GENESEE AVE., LA JOLLA, CA

PATIENT DEMAND FORECAST

SERVICE LINE	2023 VOLUME ESTIMATE	2028 VOLUME FORECAST	2033 VOLUME FORECAST	5 YR GROWTH	10 YR GROWTH
Endocrinology	1,176	1,404	1,547	19.4%	31.5%
Psychiatry	76,091	85,649	86,132	12.6%	13.2%
Spine	1,142	1,274	1,324	11.6%	16.0%
Vascular	9,831	10,816	11,664	10.0%	18.6%
Cardiology	57,807	63,264	66,840	9.4%	15.6%
Ophthalmology	52,825	57,652	62,587	9.1%	18.5%
Physical Therapy/Rehabilitation	144,309	157,107	178,193	8.9%	23.5%
ENT	17,510	18,982	20,239	8.4%	15.6%
Orthopedics	16,903	18,273	19,934	8.1%	17.9%
Pain Management	6,516	6,981	7,315	7.1%	12.3%
Miscellaneous Services	121,423	129,800	139,289	6.9%	14.7%
Lab	261,449	278,711	290,551	6.6%	11.1%
Nephrology	2,917	3,095	3,238	6.1%	11.0%
Podiatry	10,757	11,304	11,970	5.1%	11.3%
Neurology	9,164	9,584	9,976	4.6%	8.9%
Trauma	4,372	4,567	4,742	4.5%	8.5%
Evaluation and Management	591,172	613,036	626,297	3.7%	5.9%
Oncology	8,242	8,502	8,835	3.2%	7.2%
Radiology	173,097	177,116	180,370	2.3%	4.2%
Dermatology	25,293	25,784	26,155	1.9%	3.4%
Gastroenterology	13,375	13,512	13,587	1.0%	1.6%
General Surgery	3,392	3,410	3,446	0.5%	1.6%
Urology	5,872	5,869	5,992	0.0%	2.0%

Market Scenario Planner displays the types of services patients in your market are expected to use and allows projections to be customized according to five key growth drivers; disease prevalence, care management, insurance, readmissions and technology shifts. The above data is representative of the property which includes areas within a 5 mile radius.

H.M. POOLE BUILDING

9834 GENESEE AVENUE

For More Information, Please Contact:

BILL CAVANAGH

+1 858 546 5460

bill.cavanagh@cushwake.com

CA LIC. #00905262

MATTHEW MELENDRES

+1 619 732 6026

matthew.melendres@cushwake.com

CA LIC. #02162349

