

COMMERCIAL
BUILDING
FOR SALE

1401 Maclay Commerce Drive

TALLAHASSEE, FL • 32312



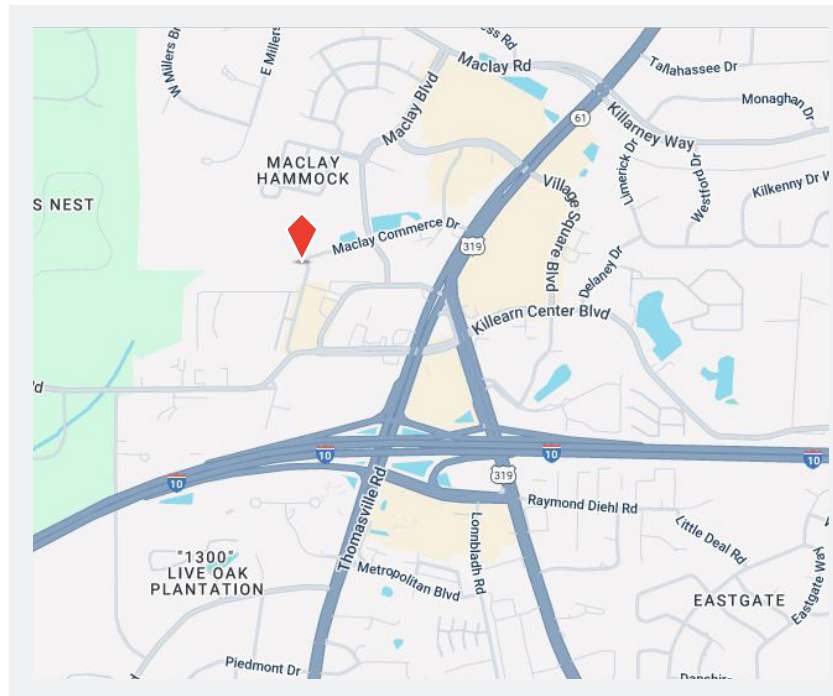
MARKET DISTRICT PARK FRONTAGE

PROPERTY OVERVIEW

Square Footage Available for Purchase	2,550 sf*
Property Type	Office Duplex
Acreage	0.11 AC
Year Built	1986
Zoning	Activity Center
Parcel ID	110510 A0051
Asking Price	\$649,000

PROPERTY & LOCATION HIGHLIGHTS

- + Directly fronts the new 9.8-acre Market District Park
- + *Duplex building with separate ownership - adjacent 2,550 sf unit also available for purchase price of \$649,000
- + Located just off Thomasville Rd
- + Ideally situated less than 1 mile to/from I-10



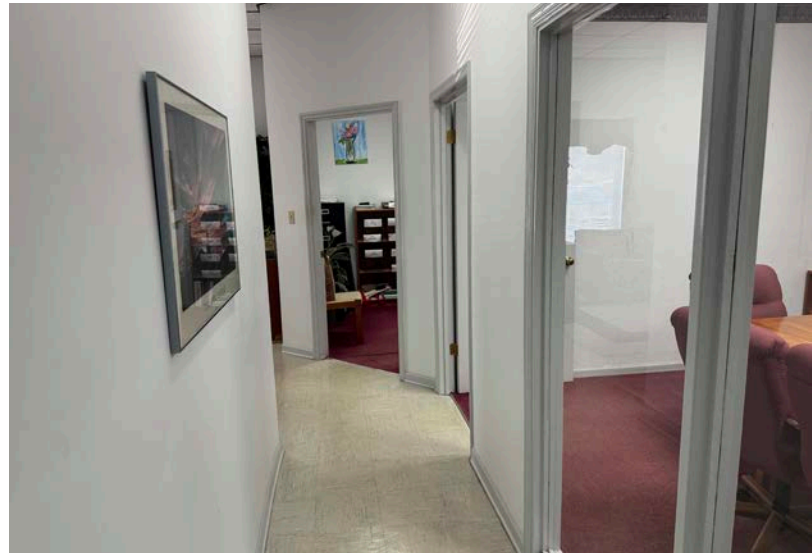
Stewart Proctor, CCIM
(850) 294-9060 mobile
sproctor@ciminelli.com

Ciminelli
REAL ESTATE SERVICES
PROCTOR & LONG GROUP

COMMERCIAL
BUILDING
FOR SALE

1401 Maclay Commerce Drive

TALLAHASSEE, FL • 32312



Stewart Proctor, CCIM
(850) 294-9060 mobile
sproctor@ciminelli.com

 **Ciminelli**
REAL ESTATE SERVICES
PROCTOR & LONG GROUP

COMMERCIAL
BUILDING
FOR SALE

1401 Maclay Commerce Drive

TALLAHASSEE, FL • 32312



MARKET DISTRICT

MARKET DISTRICT PARK



MARKET DISTRICT PARK HIGHLIGHTS

- + Walking and biking paths
- + Children's play area
- + Water play elements
- + On-street parking
- + Shaded gathering spaces
- + Pickleball courts
- + Open green spaces



**Renderings, map, and information was sourced from Blueprint Intergovernmental Agency and is believed to be current. Subject to change.*



Stewart Proctor, CCIM
(850) 294-9060 mobile
sproctor@ciminelli.com

Ciminelli
REAL ESTATE SERVICES
PROCTOR & LONG GROUP