



For Lease

549 N Wymore Road
Maitland, FL 32751

1,281 SF available

 **JLL** SEE A BRIGHTER WAY

Property Highlights



Two-story office building built in 2001



Conveniently situated in Maitland just off Maitland Blvd and I-4



Suite 207 is 1,281 SF



On-site ownership and management



Ample free parking surrounding building



\$28.00/SF Modified Gross

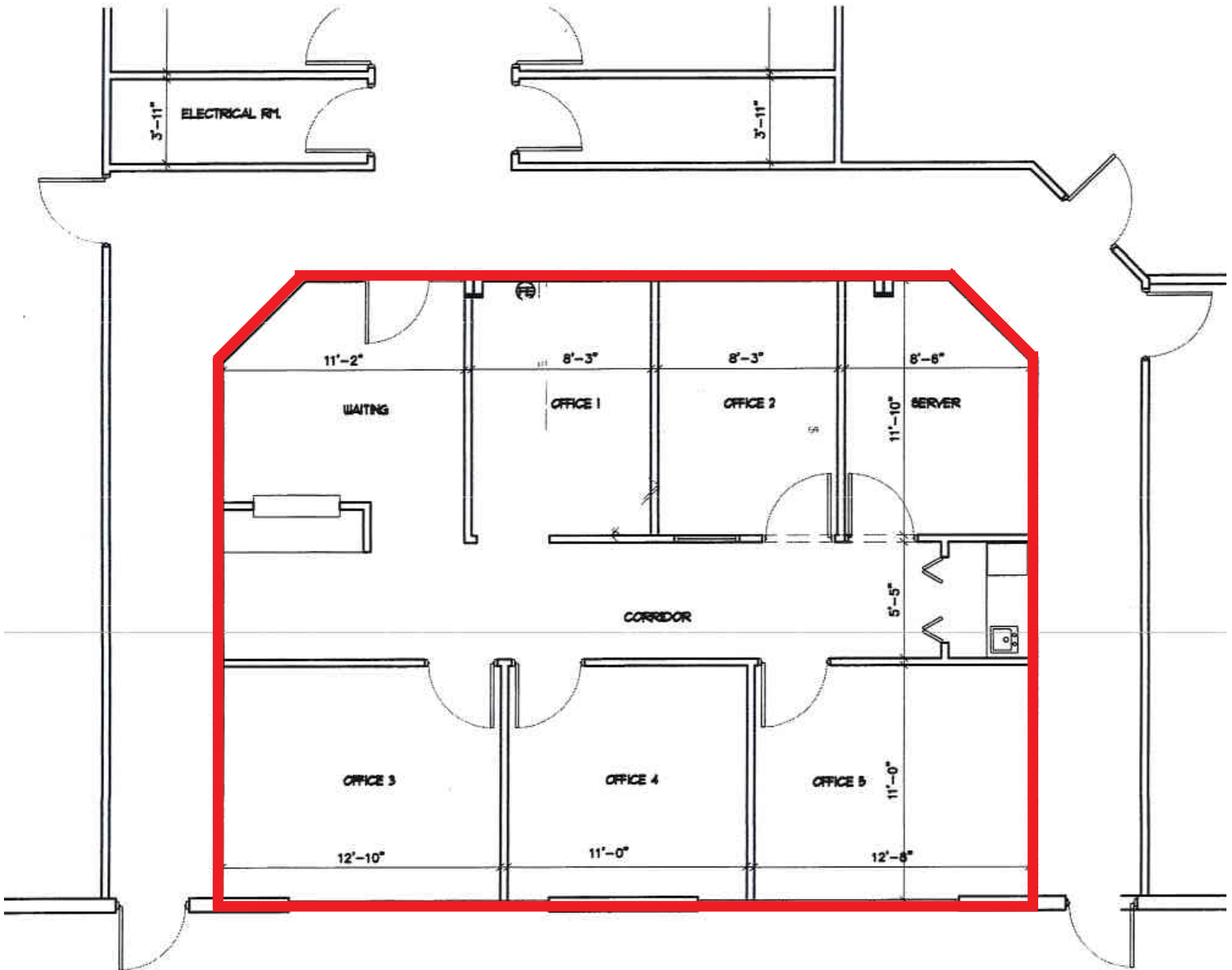


Available immediately



Floorplan

Suite 207: ± 1,281 SF



Location Highlights



- Convenient access to Interstate 4 with new ramps recently completed as part of the I-4 Ultimate Project
- Close proximity to restaurants and RDV Sportsplex

JLL.com

John Worrell, CCIM

Senior Vice President

john.worrell@jll.com

+1 321 684 9240

Jamie Barati, SIOR, CCIM

Senior Vice President

jamie.barati@jll.com

+1 407 930 1803