



3141
FAIRVIEW PARK





VARIETY OF AVAILABILITY

including Spec Suites



HIGHLY ACCESSIBLE

location at the center of three major arteries: 1-495, 1-66 and Route 50



FLEXIBLE FLOOR PLATES

21,900 SF floor plates with expansive window lines and high ceilings



STRUCTURED PARKING

with covered walkway and 3.4 per 1000 parking ratio above-grade



MARRIOTT

DIRECTLY CONNECTED

to the Marriott Fairview Park with shared outdoor event space

WORK IN

Style



Newly Renovated
**LOBBY & TENANT
LOUNGE**





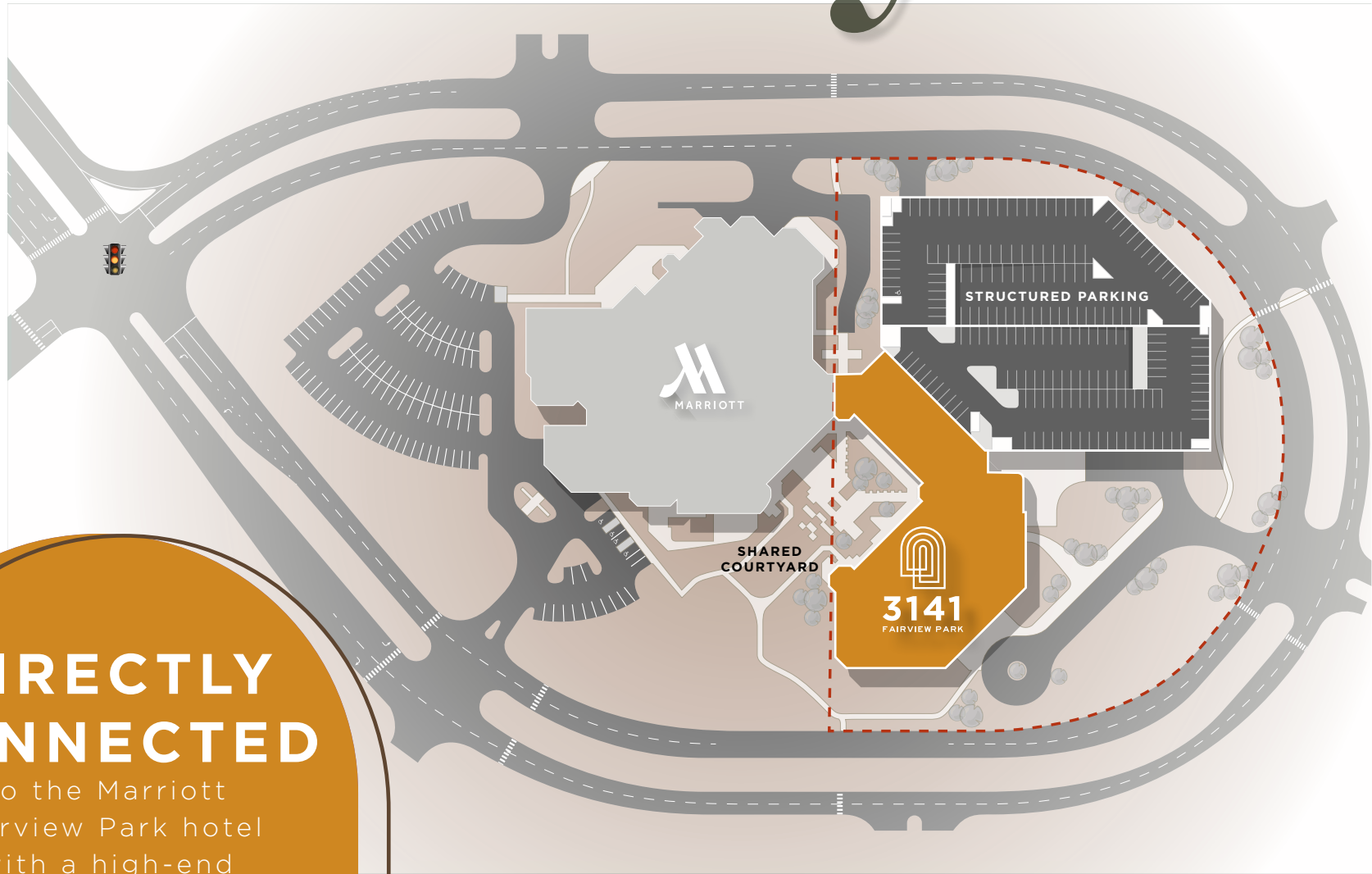
WORK IN

Tranquility

Landscaped courtyard &
picturesque walking paths

WORK IN

Proximity



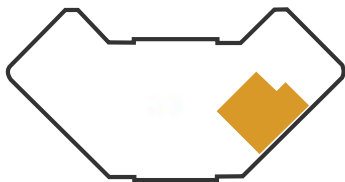
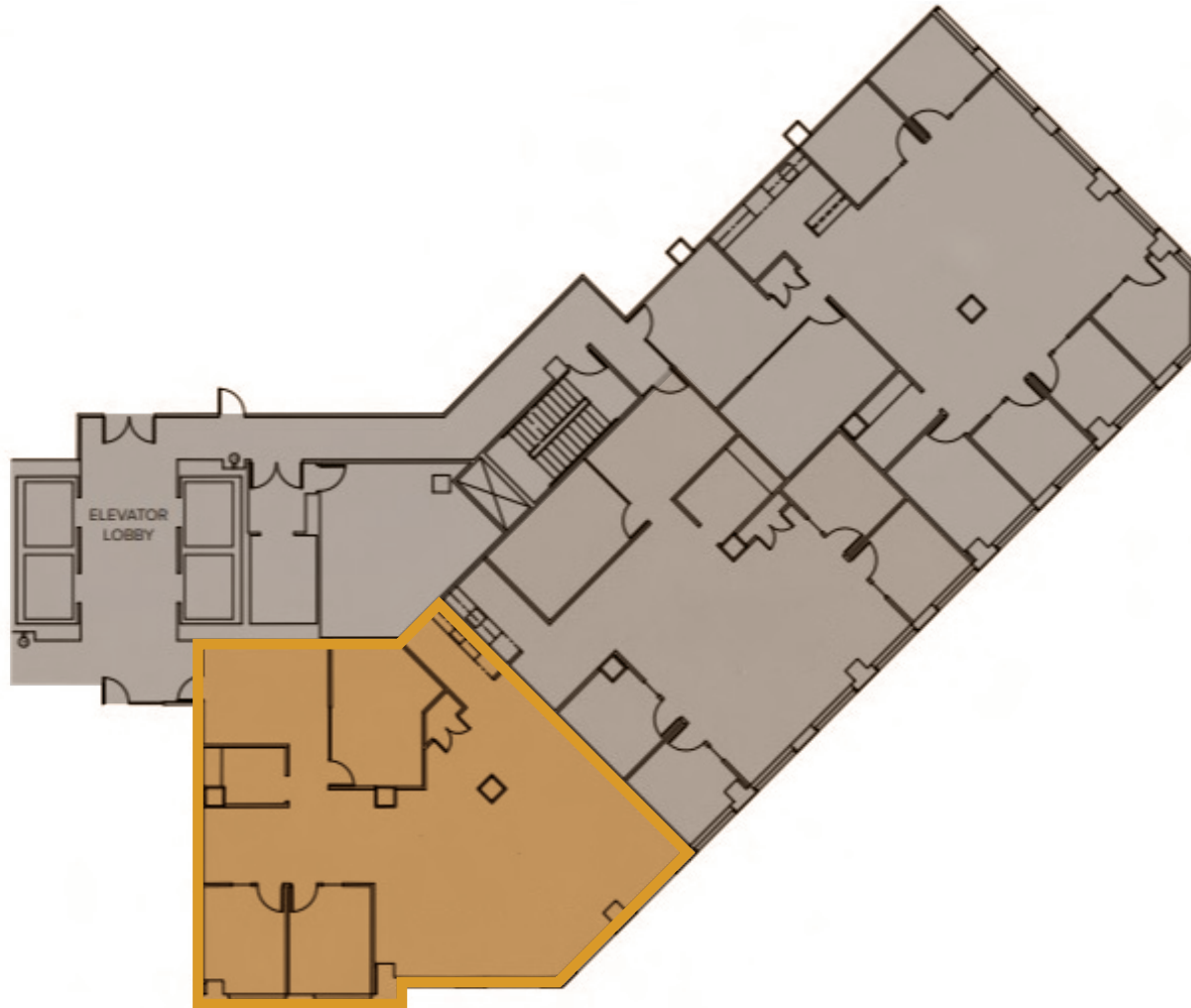
**DIRECTLY
CONNECTED**

to the Marriott
Fairview Park hotel
with a high-end
restaurant and bar.



3141
FAIRVIEW PARK

SUITE 300
2,443 RSF



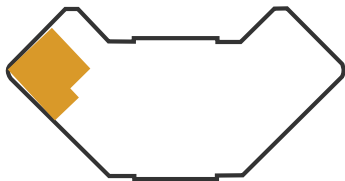


3141

FAIRVIEW PARK

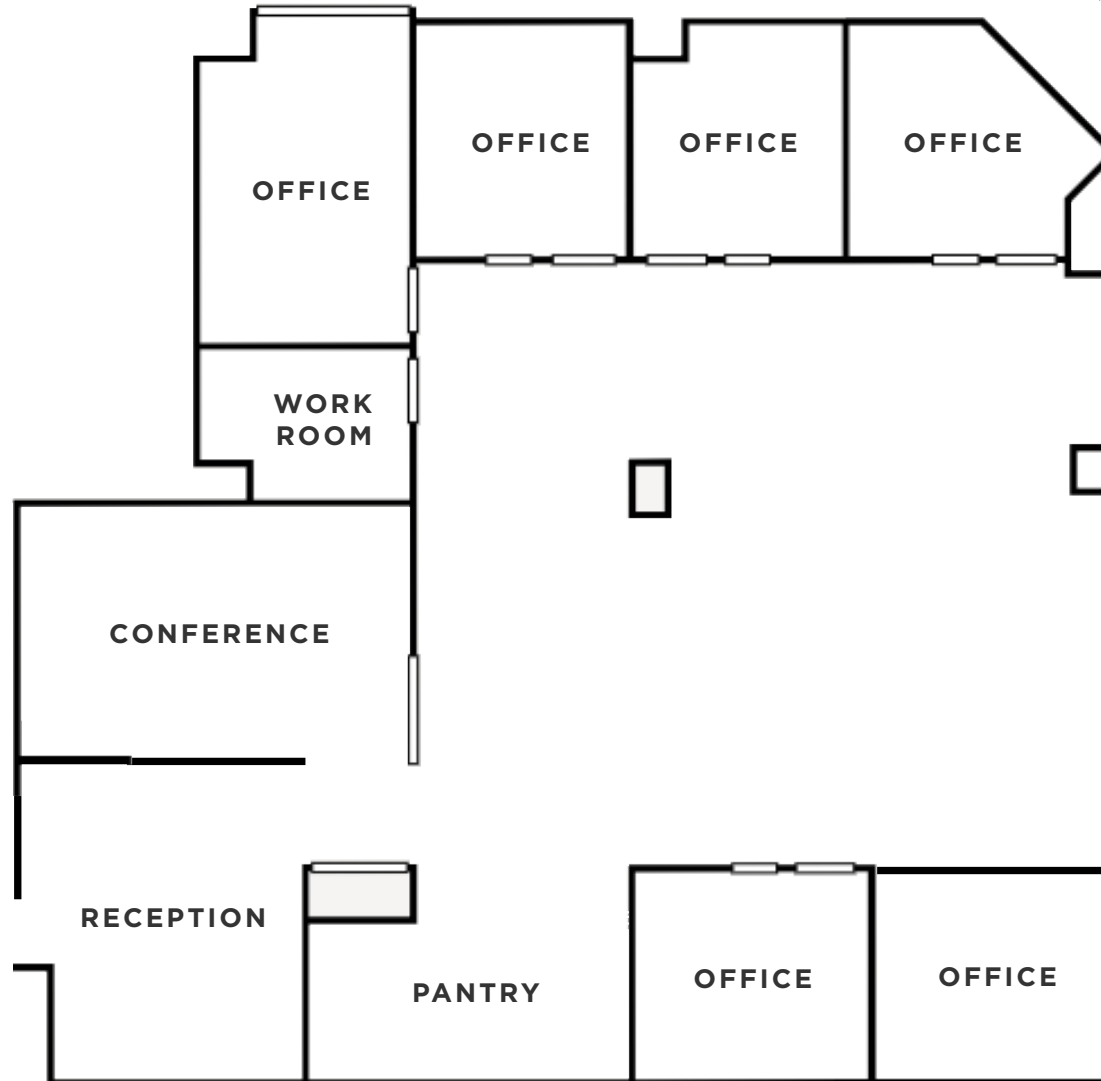


- 6 windowed offices
- Open kitchen/pantry
- Glass-walled conference room



SUITE 320

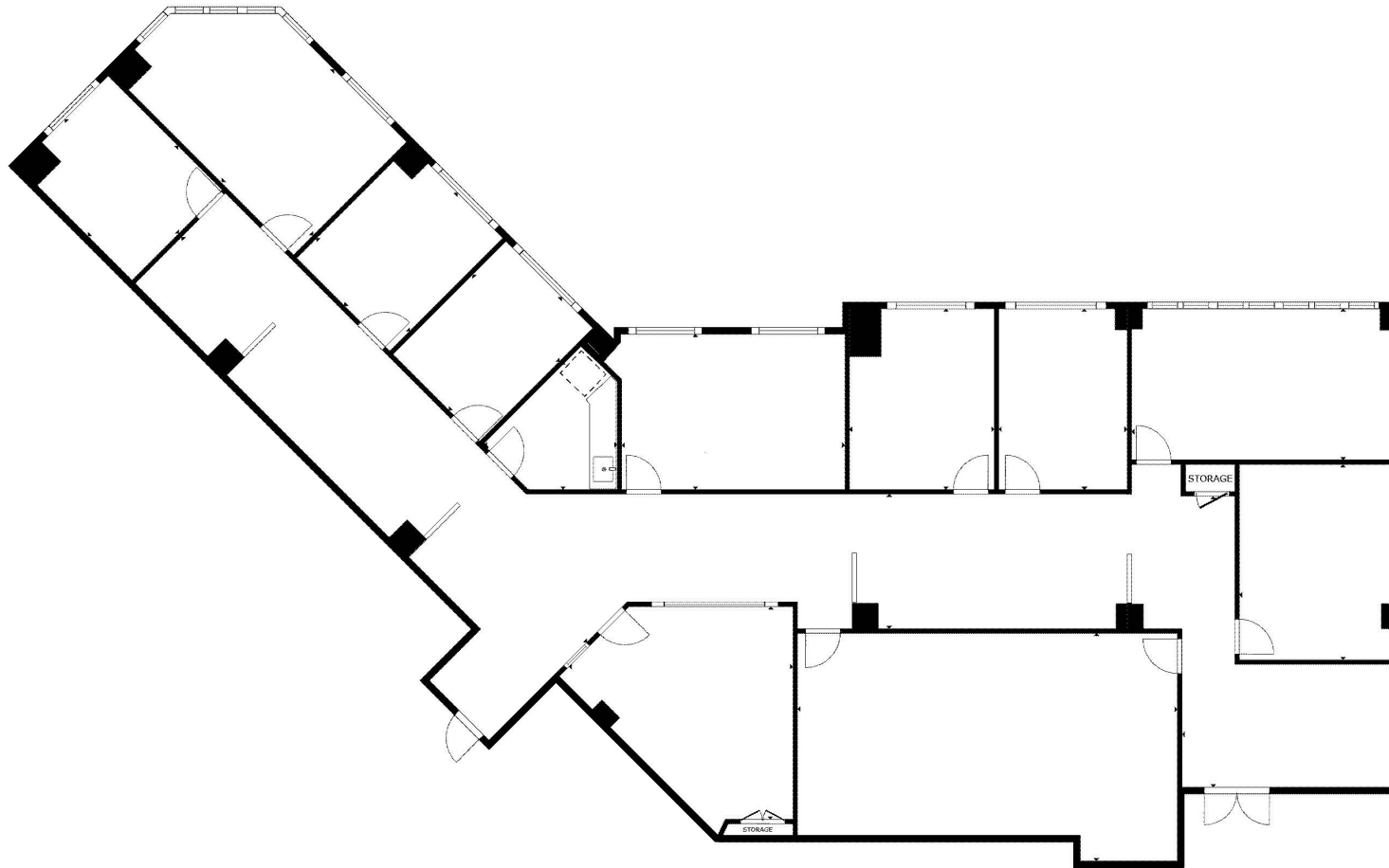
2,940 RSF





3141
FAIRVIEW PARK

SUITE 350
4,546 RSF



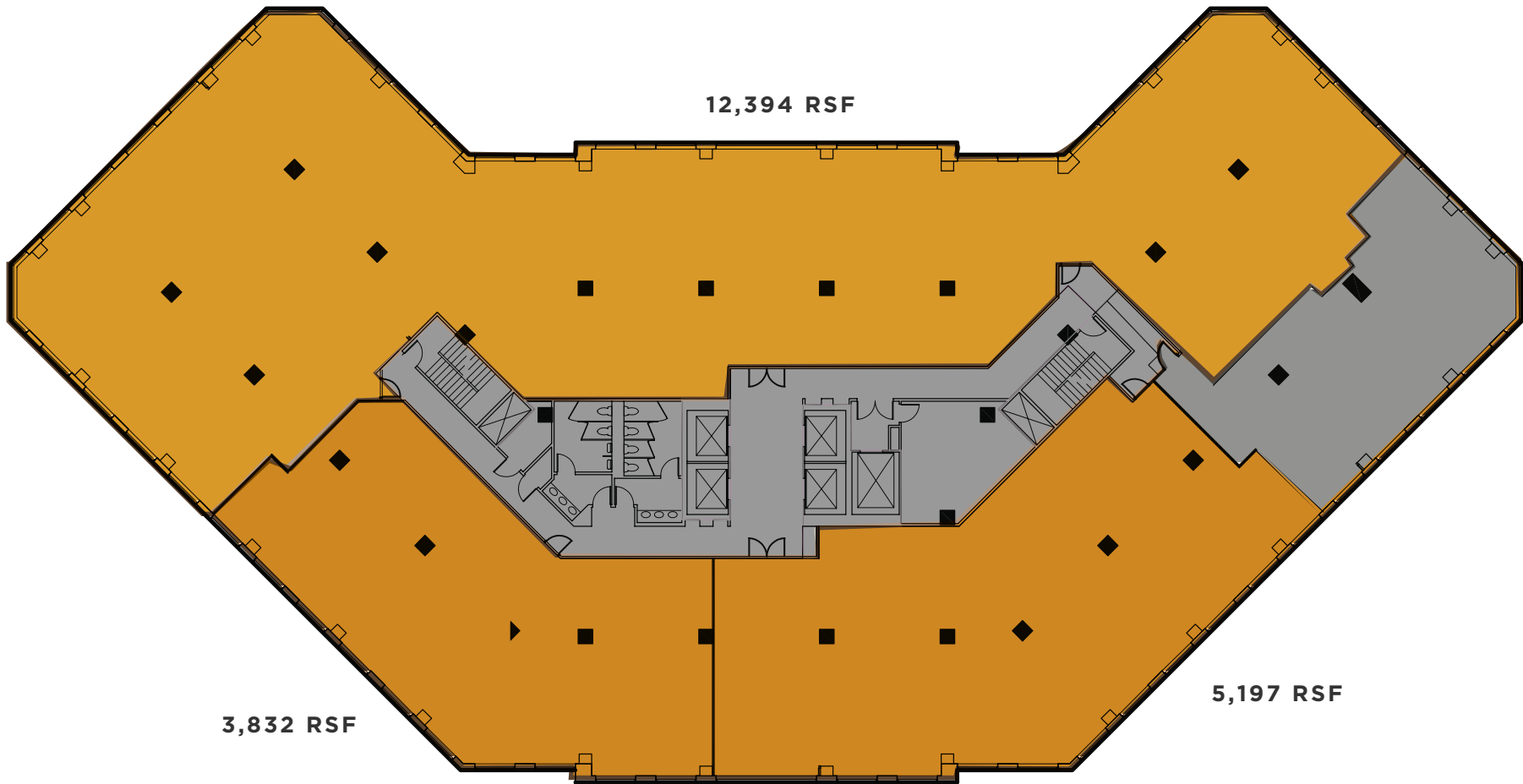


3141

FAIRVIEW PARK

4TH FLOOR

21,423 RSF
AVAILABLE



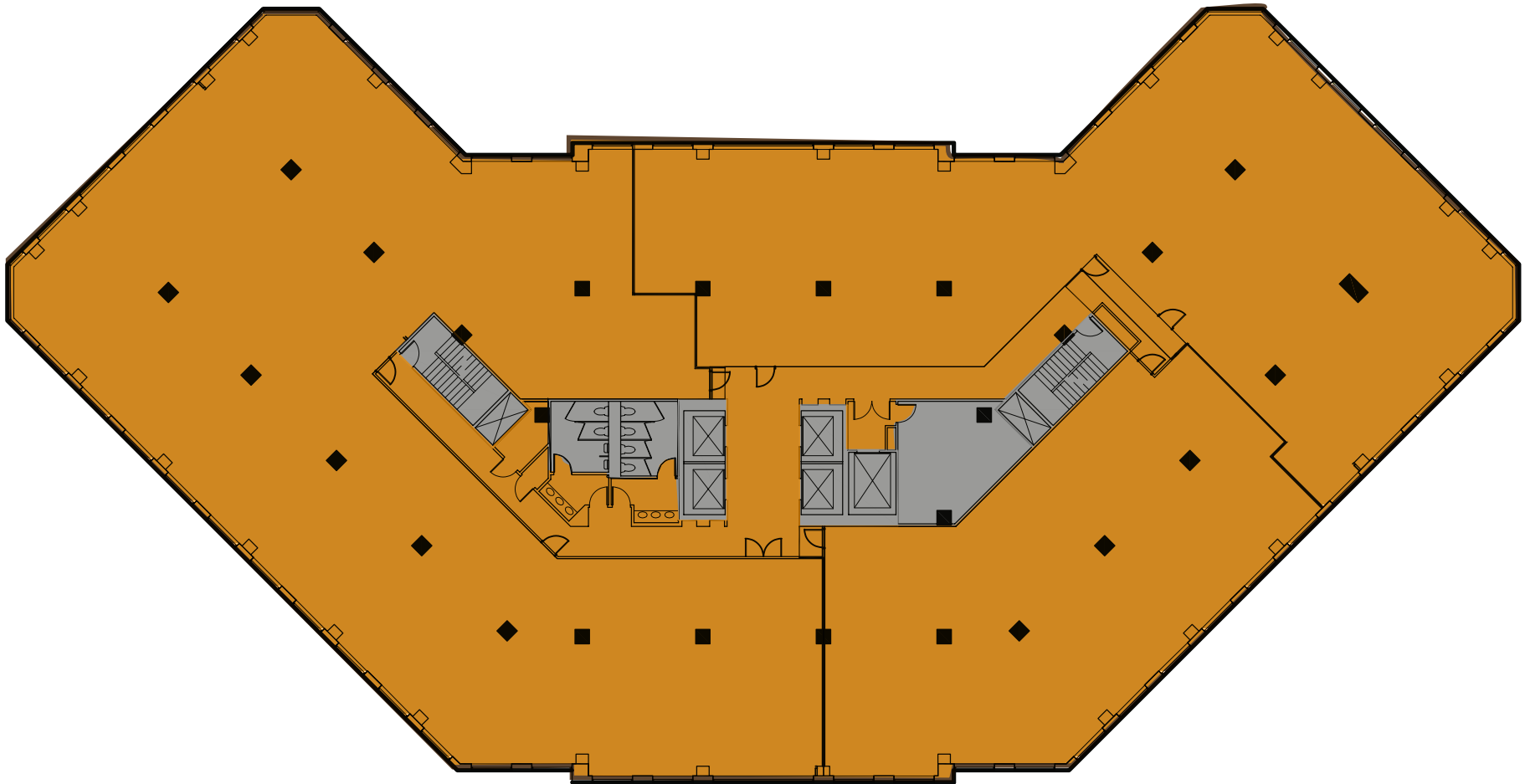


3141

FAIRVIEW PARK

5TH FLOOR

23,526 RSF
AVAILABLE

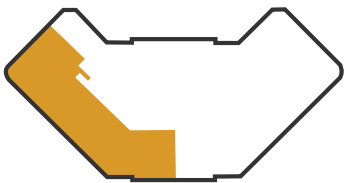
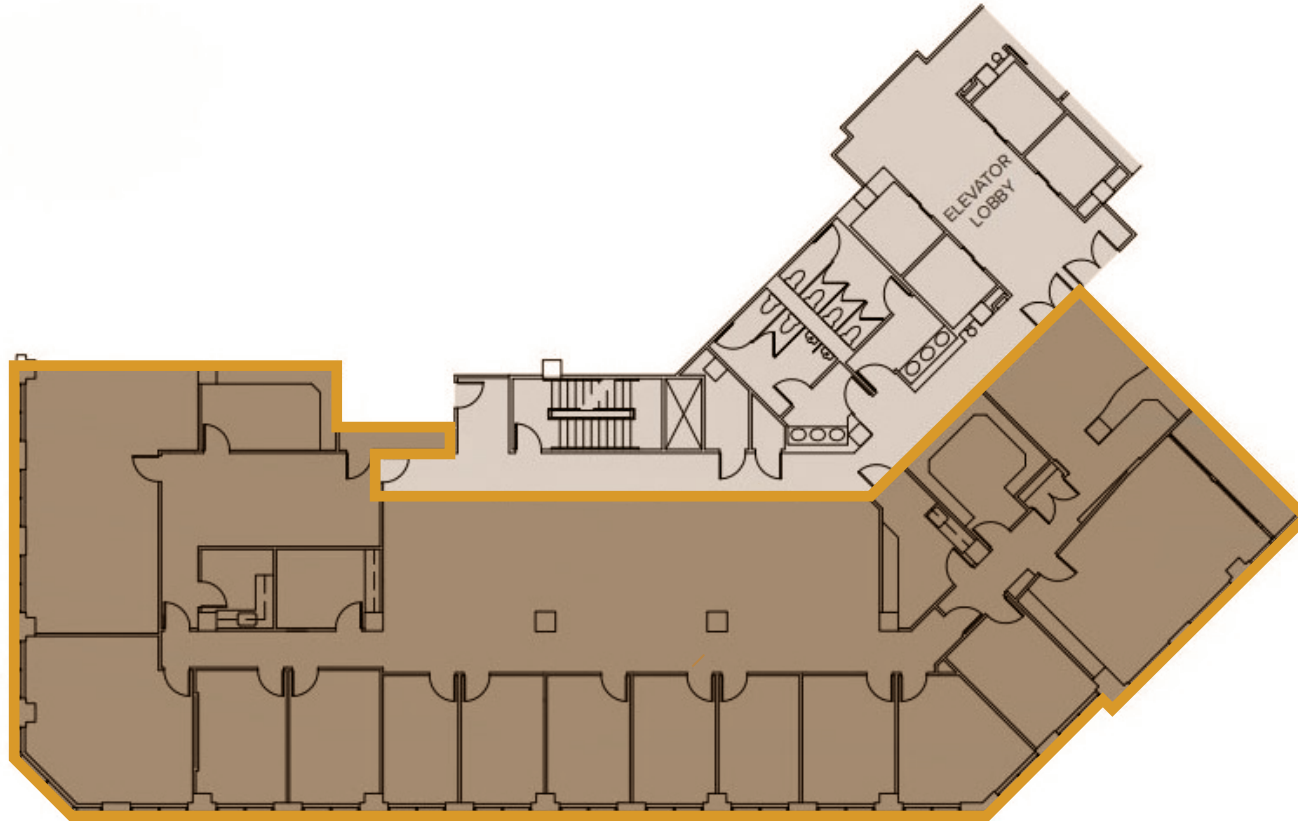




3141
FAIRVIEW PARK

SUITE 600

7,434 RSF

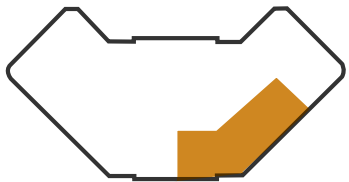




3141
FAIRVIEW PARK

SUITE 650

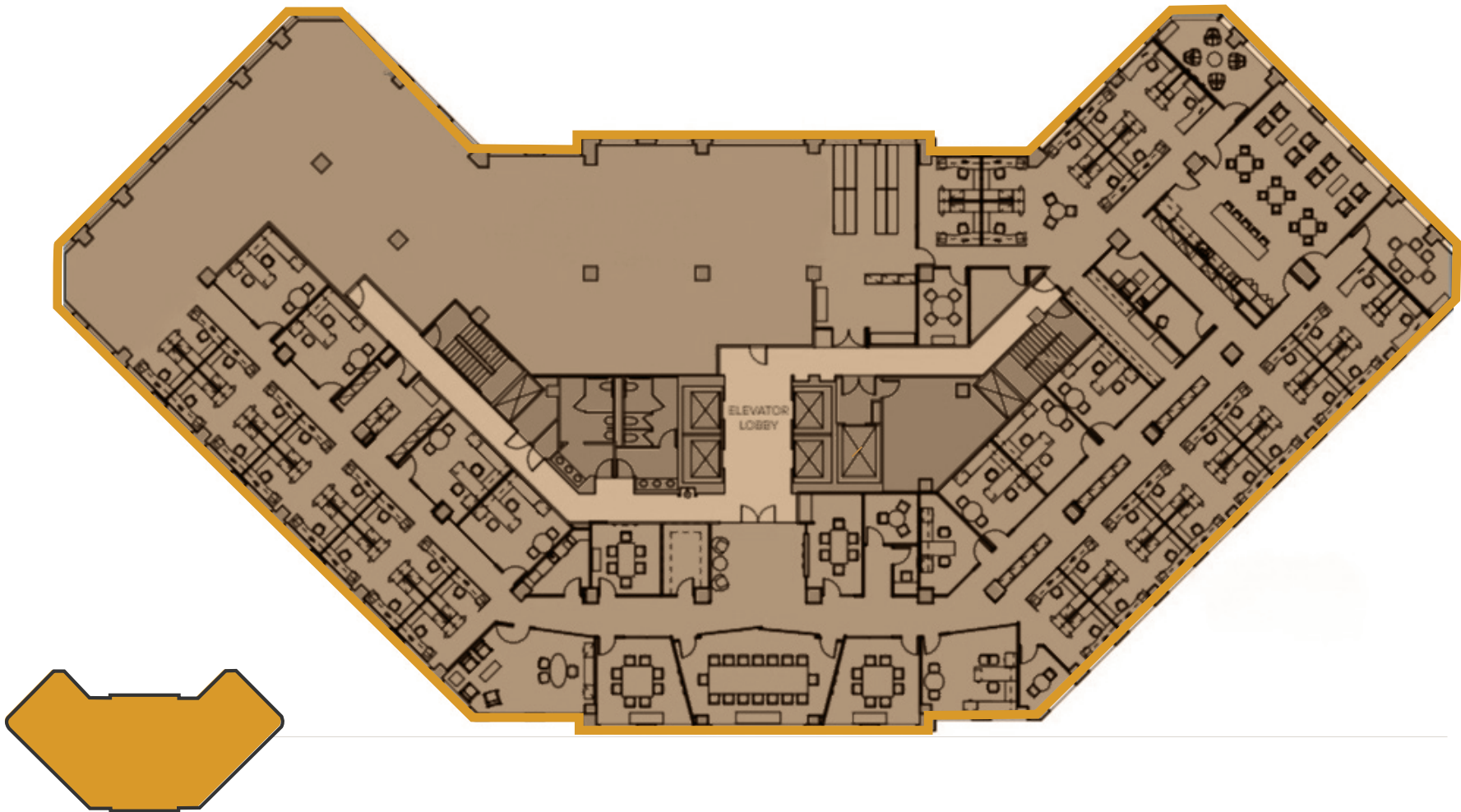
6,050 RSF





3141
FAIRVIEW PARK

SUITE 700
22,873 RSF

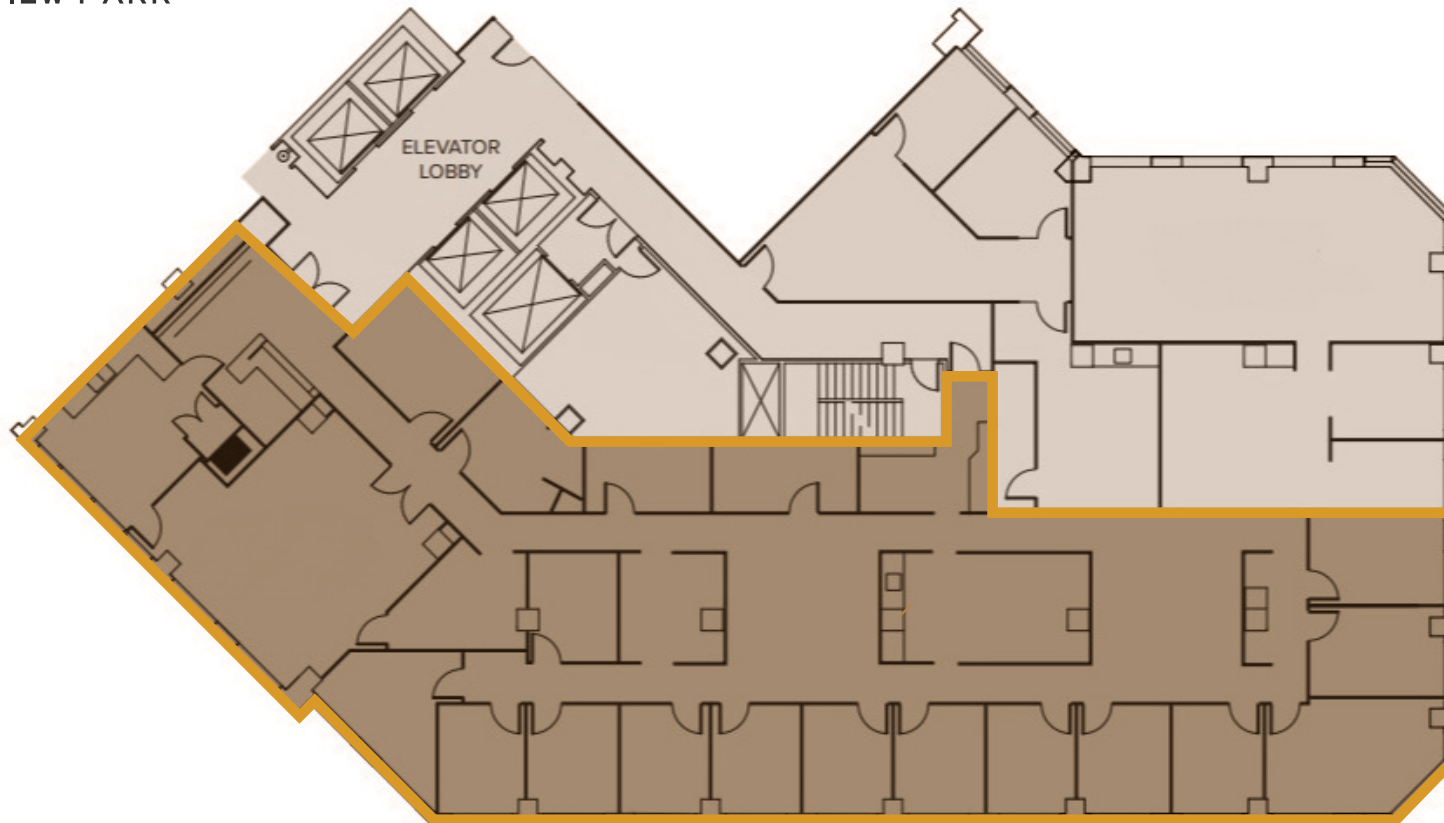




3141
FAIRVIEW PARK

SUITE 800

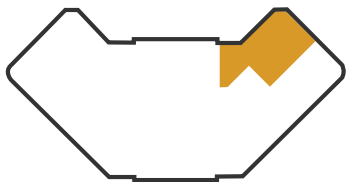
7,182 RSF





3141
FAIRVIEW PARK

SUITE 880
2,970 RSF





3141
FAIRVIEW PARK

MARK SULLIVAN

+1 202 534 3615

Mark.Sullivan@colliers.com

MATTHEW VENOS

+1 202 534 3616

Matthew.Venos@colliers.com

Colliers