



# High-end Corona Del Mar Office **For lease**

2720 E Coast Highway, Suite 200  
Corona Del Mar, CA

## SPACE PROFILE

1,050 SF  
Total SF

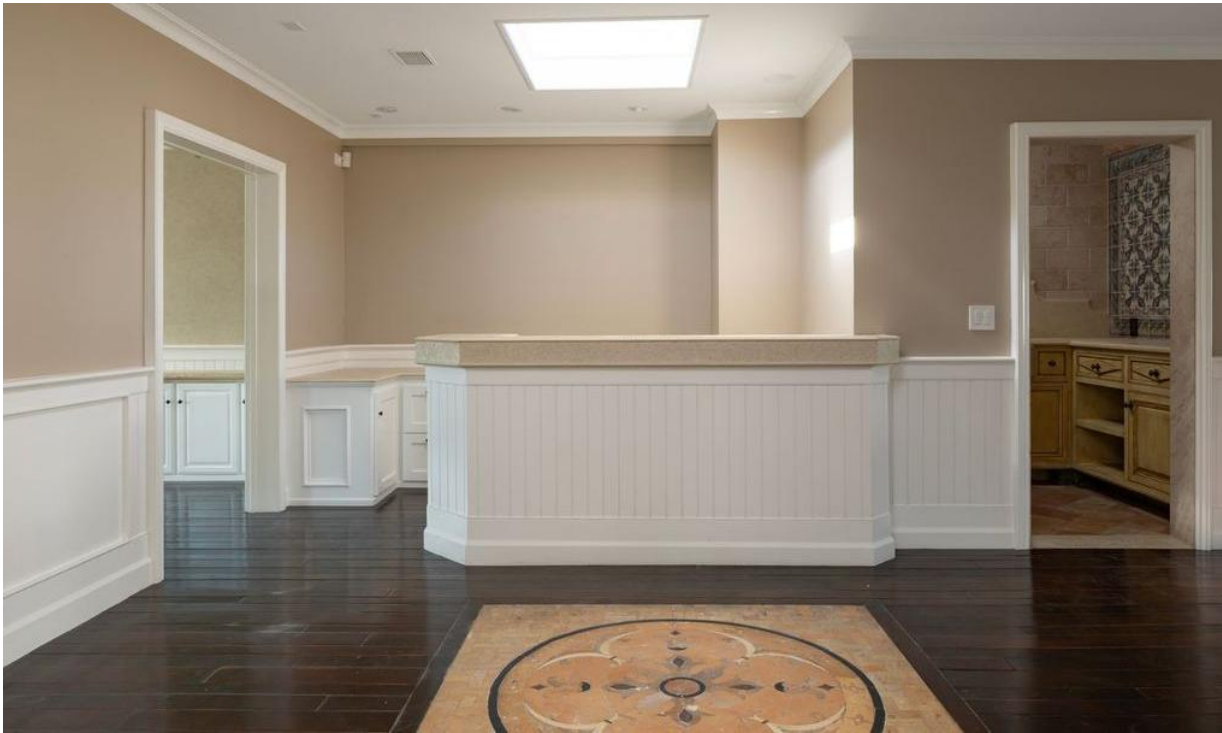
Immediate  
Availability

Negotiable  
Rental rate

4 unreserved  
Parking spaces

Office  
Use

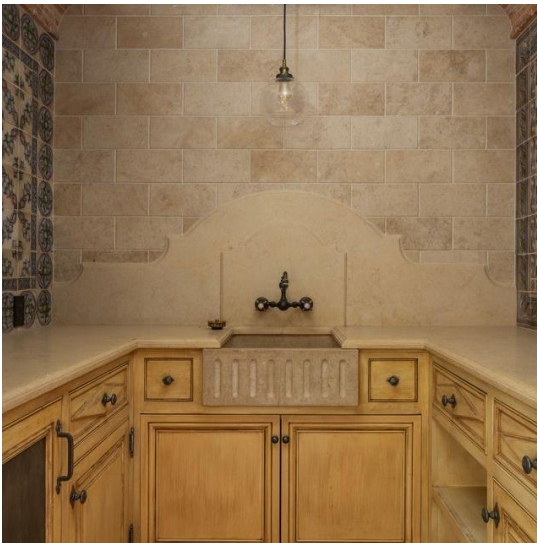


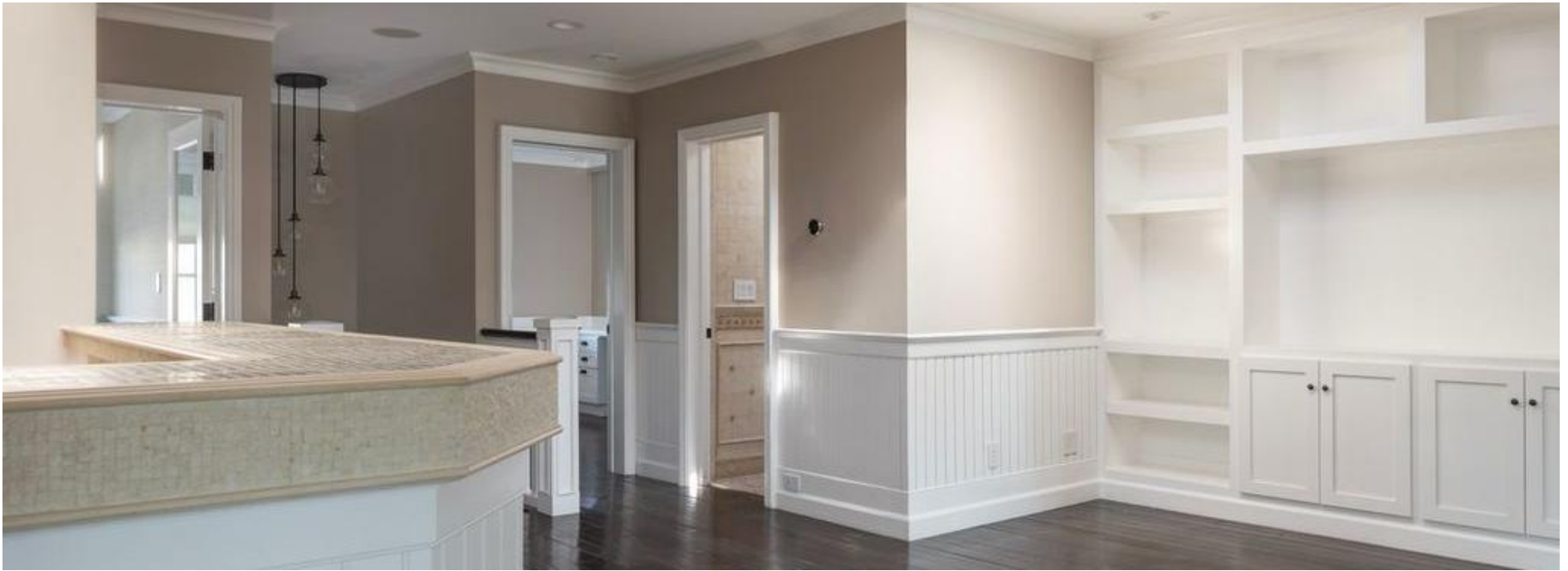


## PROPERTY OVERVIEW

### Prime Corona Del Mar Office Opportunity

This +/- 1,050 SF space with Coast Highway frontage offers high-end finishes throughout, creating an elevated environment ideal for an office user. A rare, dedicated parking lot located directly behind the building provides convenience for both clients and staff.







**Lindsay Gazzano**

+1 949 698.2280  
lgazzano@savills.us  
License #01824445

**McKenna Morgan**

+1 949 294.1266  
mcmorgan@savills.us  
License #02165339

---

© 2026 Savills. All rights reserved. The information contained in this communication has been obtained from a variety of sources believed to be reliable but has not been verified. NO WARRANTY OR REPRESENTATION, EXPRESS OR IMPLIED, IS MADE AS TO THE CONDITION OF THE PROPERTY OR ACCURACY OR COMPLETENESS OF THE INFORMATION CONTAINED HEREIN AND SAME IS SUBMITTED SUBJECT TO ERRORS, OMISSIONS, CHANGE OF PRICE, RENTAL OR OTHER CONDITIONS, WITHDRAWAL WITHOUT NOTICE AND TO ANY SPECIFIC CONDITIONS IMPOSED BY THE PROPERTY OWNER OR LESSOR.