



# 75 MARIETTA ST

*ESTABLISHED 1908*

75 MARIETTA ST  
ATLANTA, GA 30303

SUITE 201  
9,758 SF

Constructed in 1908, 75 Marietta was the original headquarters of the Georgia Railway and Power Company, the predecessor to Georgia Power. With its rich history, the building offers tenants a unique working experience in the heart of Downtown Atlanta. Located within the Fairlie-Poplar District, it is within walking distance of Centennial Olympic Park, Mercedes-Benz Stadium, State Farm Arena, and the Georgia World Congress Center. This property is easily accessible via Five Points MARTA station and offers rare access to ample parking in adjacent decks and street-level parking.

**EXCLUSIVELY  
MARKETED BY:**

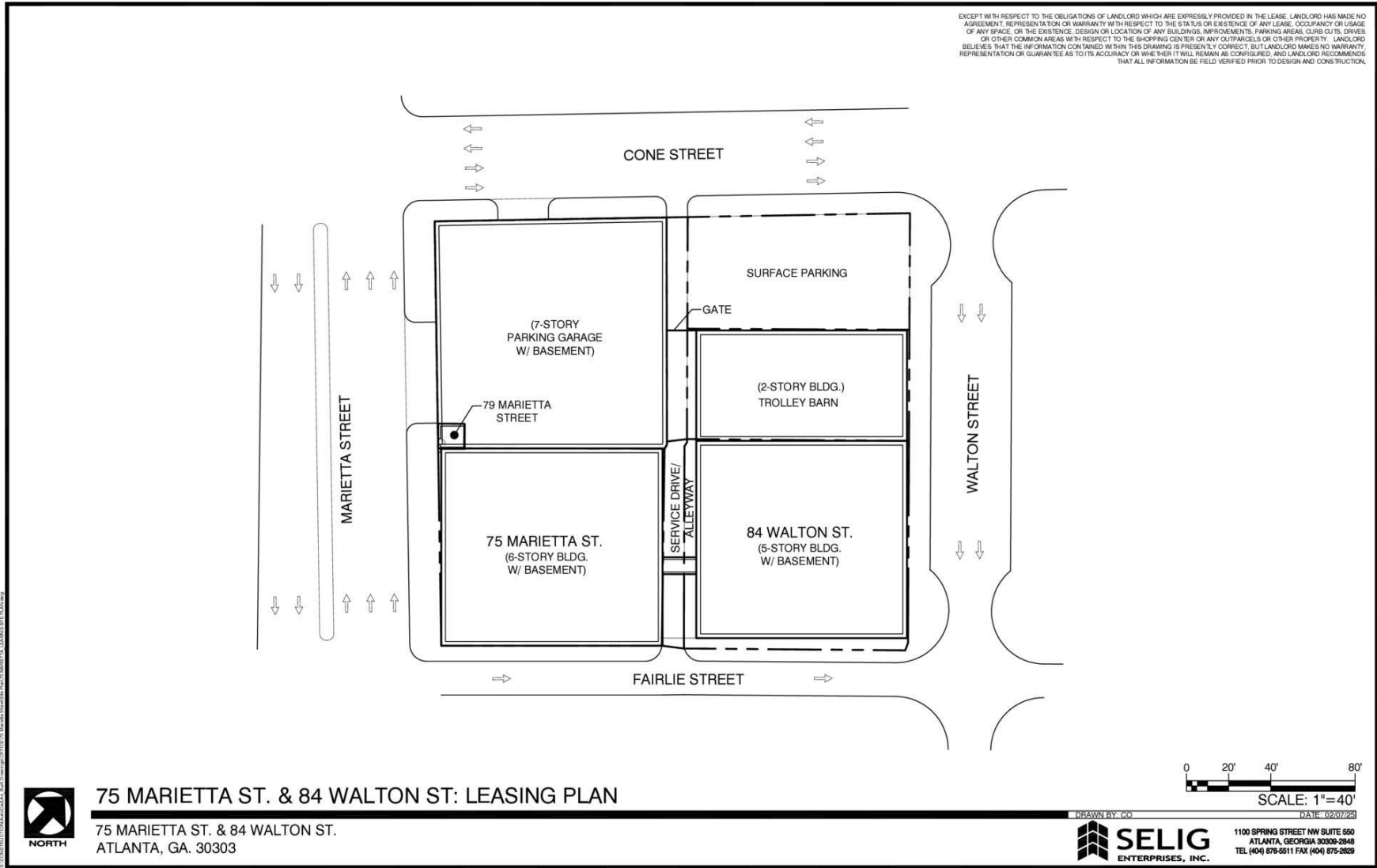


JIM SAINE

404.898.9010

[jsaine@seligenterprises.com](mailto:jsaine@seligenterprises.com)



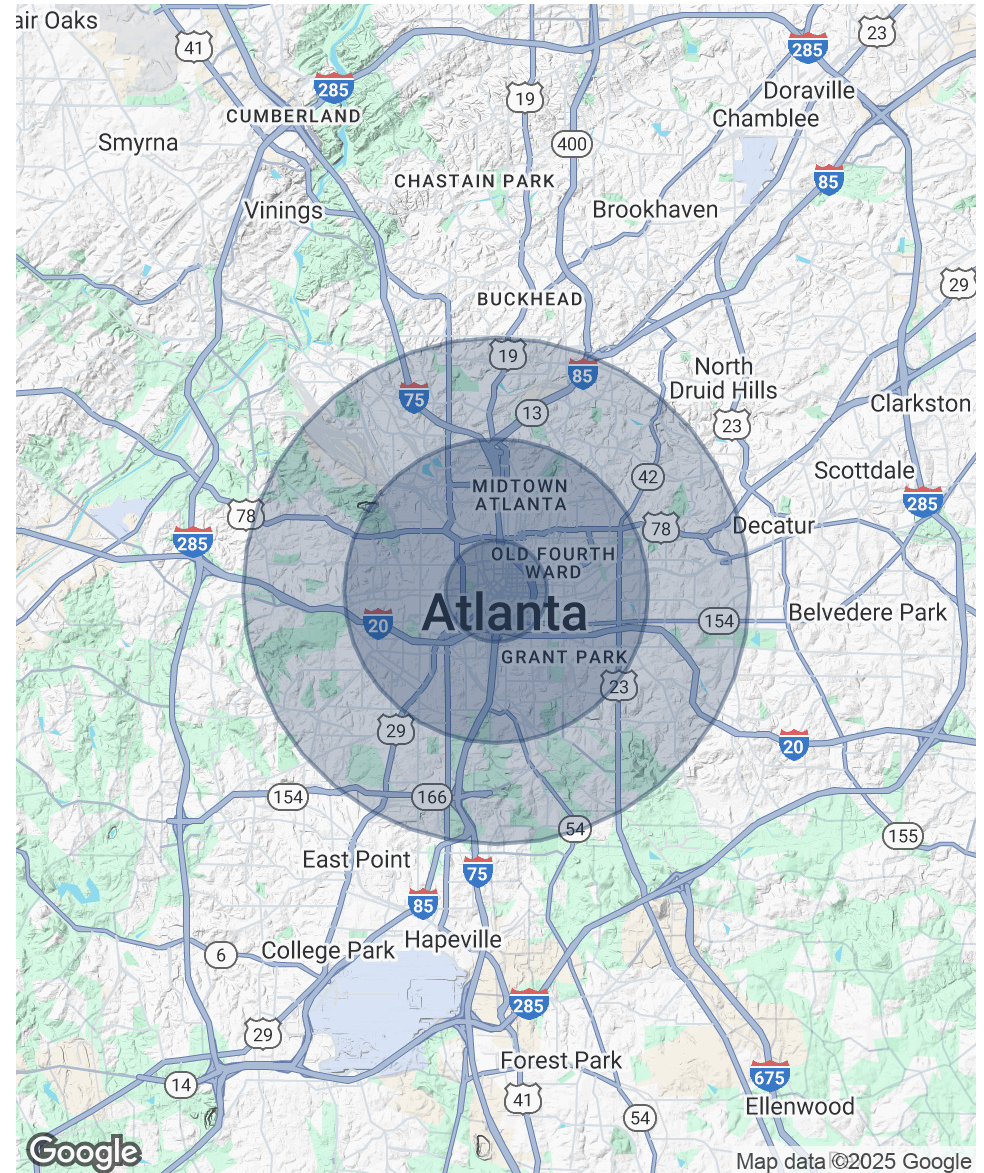








<b>POPULATION</b>	<b>1 MILE</b>	<b>3 MILES</b>	<b>5 MILES</b>
Total Population	25,714	196,271	389,570
Average Age	34	36	37
Average Age (Male)	34	36	37
Average Age (Female)	34	36	37
<b>HOUSEHOLDS &amp; INCOME</b>	<b>1 MILE</b>	<b>3 MILES</b>	<b>5 MILES</b>
Total Households	10,360	94,700	181,882
# of Persons per HH	2.5	2.1	2.1
Average HH Income	\$75,516	\$118,369	\$123,677
Average House Value	\$417,417	\$574,637	\$587,311
<b>RACE</b>	<b>1 MILE</b>	<b>3 MILES</b>	<b>5 MILES</b>
% White	27.6%	44.0%	43.1%
% Black	58.2%	40.7%	42.4%
% Asian	5.5%	6.0%	4.9%
% Hawaiian	0.1%	0.0%	0.0%
% American Indian	0.3%	0.2%	0.3%
% Other	2.7%	2.1%	2.5%





Map data ©2025 Google Imagery ©2025 Airbus, Maxar Technologies