

# 43 MILNER AVENUE, TORONTO

TOWN CENTRE PLAZA

RETAIL SPACE FOR LEASE



## 2,800 & 5,800 SQUARE FEET

Located on Milner Avenue, just east of McCowan Road

### INQUIRIES

**Matthew Goldman**

Director, Commercial Sales & Leasing  
Sales Representative  
416 636 8898 x225  
mgoldsm@thebehargroup.com

**Greg Evans**

President  
Broker of Record  
416 636 8898 x230  
gevans@thebehargroup.com

**Matthew Brown**

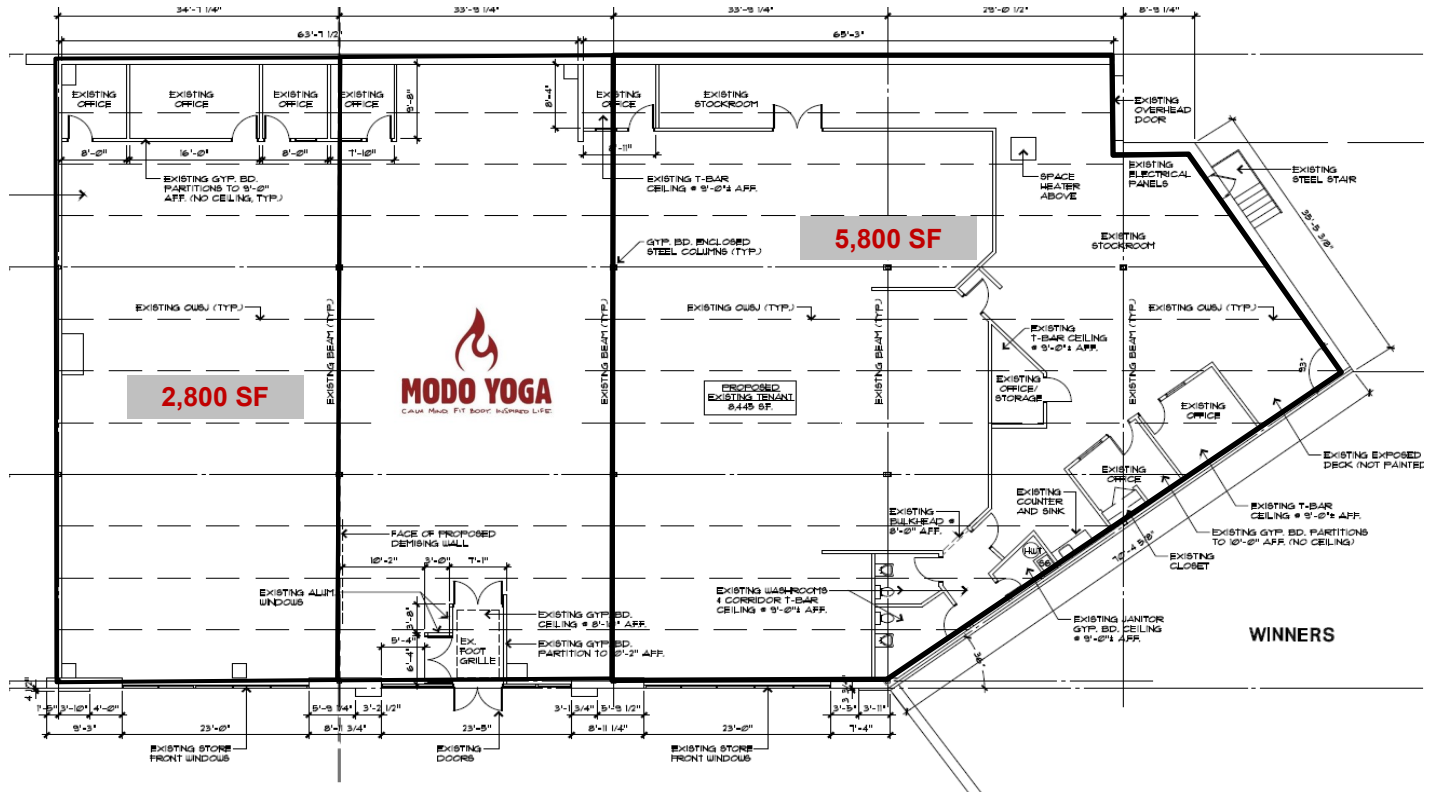
Sales Representative  
416 636 8898 x223  
mbrown@thebehargroup.com



# 43 MILNER AVENUE, TORONTO

## TOWN CENTRE PLAZA RETAIL SPACE FOR LEASE

- Located on Milner Avenue, just east of McCowan Road
- Hwy. 401 exposure
- Dense commercial, industrial and residential area
- Heavy traffic
- Neighbours in the development include: Montana's, Starbucks, Mr. Sub, Princess Auto, Winners, World Gym, National Sports, Cora
- **Possession:** Immediate
- **Size:**
  - 2,800 square feet  
Net Rent: \$26.00 per square foot
  - 5,800 square feet  
Net Rent: \$23.00 per square foot
  - TMI: \$15.00 per square foot



## FLOOR PLAN

# 43 MILNER AVENUE, TORONTO

TOWN CENTRE PLAZA  
RETAIL SPACE FOR LEASE



# 43 MILNER AVENUE, TORONTO

## TOWN CENTRE PLAZA

### RETAIL SPACE FOR LEASE



Demographics	1 km	3 km	5 km
Total Population (2016)	12,958	96,141	305,746
Daytime Population (2015)_	14,943	83,059	184,652
Total Households (2016)	4,935	34,184	102,187
Household Average Income (2016)	\$66,107	\$70,790	\$72,291

Source: Statistics Canada

All information is from sources deemed reliable and is subject to errors and omissions which we believe to be correct and assume no responsibility. Changes of price, rental, prior sale and withdrawal without notice. People are not to construe this information as legal or tax advice. You should consult your legal counsel, accountant, or other advisors on matters relating to this presentation. The Behar Group Realty Inc., Brokerage.

