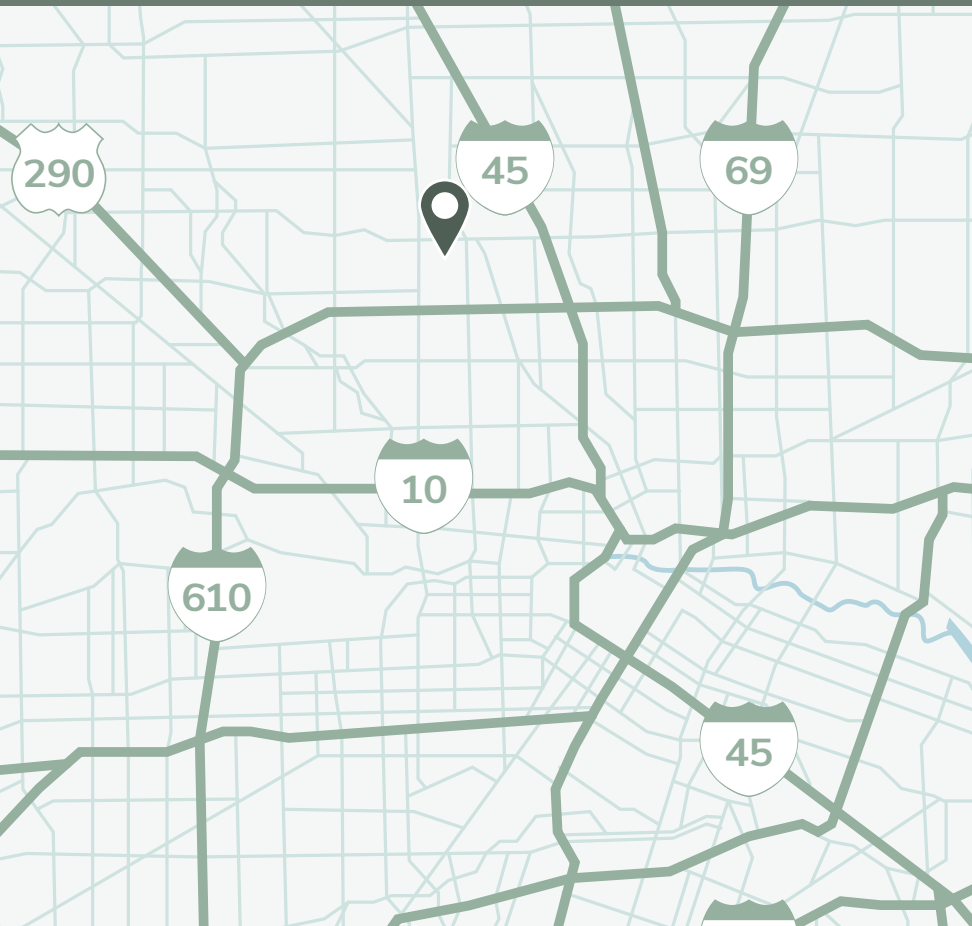




PINE FOREST BUSINESS PARK  
401-407 W. CROSTIMBERS ST.  
HOUSTON, TX 77018



## FOR LEASE

- 47,010 SF available
- 42,546 SF warehouse
- 4,464 SF office
- Front-load configuration
- 9 dock-high doors, 1 ramp
- 22' clear height
- Fully sprinklered
- Fully fenced and secured
- End-cap suite fronting W. Crosstimbers
- Strategic infill Northwest location
- Immediate access to Loop 610, Hwy 290, and I-45

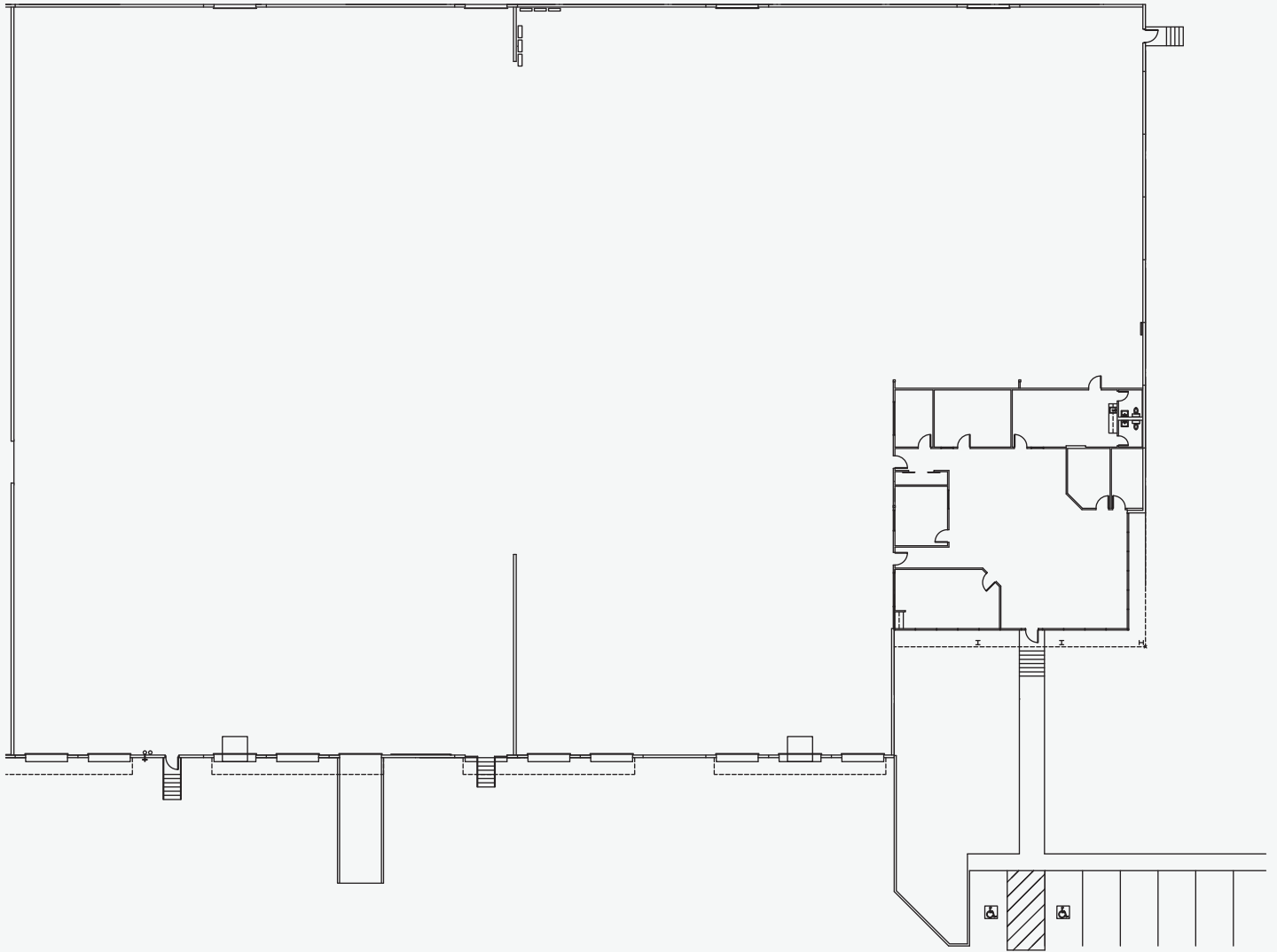
**FOR LEASING INFORMATION, CONTACT:**

**BOONE SMITH** | 713.300.0267 | boone.smith@streamrealty.com  
**GARRET GEACONE** | 713.300.0232 | garret.geacone@streamrealty.com  
**NATALIE GILBERT** | 713.332.3413 | natalie.gilbert@streamrealty.com



**FOR LEASE 47,010 SF**

PINE FOREST BUSINESS PARK  
401-407 W. CROSSTIMBERS ST.  
HOUSTON, TX 77018



**FOR LEASING INFORMATION, CONTACT:**

**BOONE SMITH** | 713.300.0267 | boone.smith@streamrealty.com

**GARRET GEACONE** | 713.300.0232 | garret.geaccone@streamrealty.com

**NATALIE GILBERT** | 713.332.3413 | natalie.gilbert@streamrealty.com



**FOR LEASE 47,010 SF**

PINE FOREST BUSINESS PARK  
401-407 W. CROSSTIMBERS ST.  
HOUSTON, TX 77018



**FOR LEASING INFORMATION, CONTACT:**

**BOONE SMITH** | 713.300.0267 | [boone.smith@streamrealty.com](mailto:boone.smith@streamrealty.com)

**GARRET GEACONE** | 713.300.0232 | [garret.geacone@streamrealty.com](mailto:garret.geacone@streamrealty.com)

**NATALIE GILBERT** | 713.332.3413 | [natalie.gilbert@streamrealty.com](mailto:natalie.gilbert@streamrealty.com)

**STREAM**



**MOXIEBRIDGE**