



# 237 Summit Ridge Parkway

SANTAQUIN, UTAH 84655

**For Sale or Lease**  
Rate Starting at \$1.10 with  
Spec Office TI Included

## Property Highlights

- 38,675 total SF
- ±760-±850 office SF dependent on unit
- ±30,895 warehouse SF
- Divisible to 3,793 SF
- Clear height: 20'
- 10 ground level doors
- 2,200 amp / 208 volt / 3-phase
- 55'x68'6" column spacing
- Gas forced air heat
- Construction completed in 2026

*For information, please contact:*

**Ben Richardson**

*Executive Managing Director*

t 801-746-4733

brichardson@newmarkmw.com

**Kolby Long**

*Associate*

t 801-727-4413

klong@newmarkmw.com

**Taylor Ogden**

*Industrial Specialist*

t 385-388-8942

togden@newmarkmw.com

376 E. 400 S.

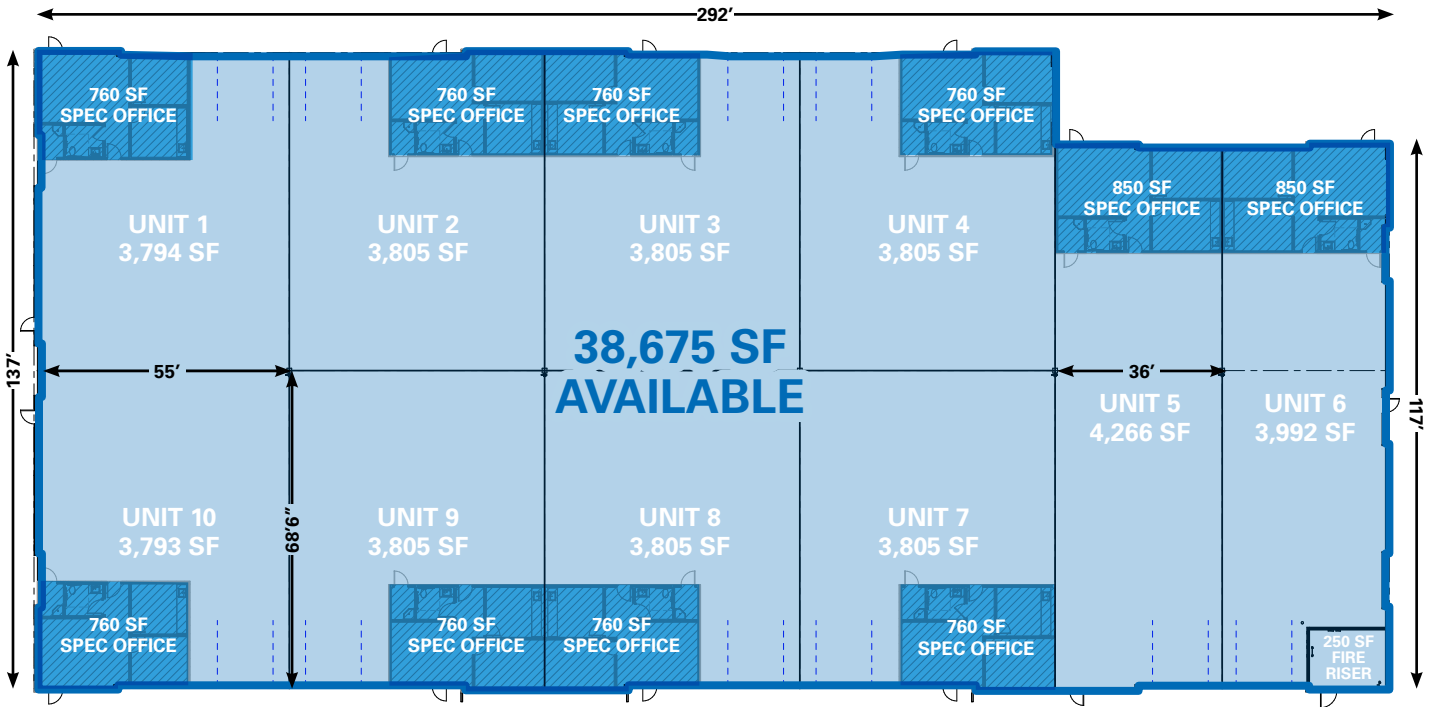
Suite 120

Salt Lake City, UT 84111

**NEWMARK**

 **MOUNTAIN WEST**

The information contained herein has been obtained from sources deemed reliable but has not been verified and no guarantee, warranty or representation, either express or implied, is made with respect to such information. Terms of sale or lease and availability are subject to change or withdrawal without notice.



For information, please contact:

**Ben Richardson**  
 Executive Managing Director  
 t 801-746-4733  
 brichardson@newmarkmw.com

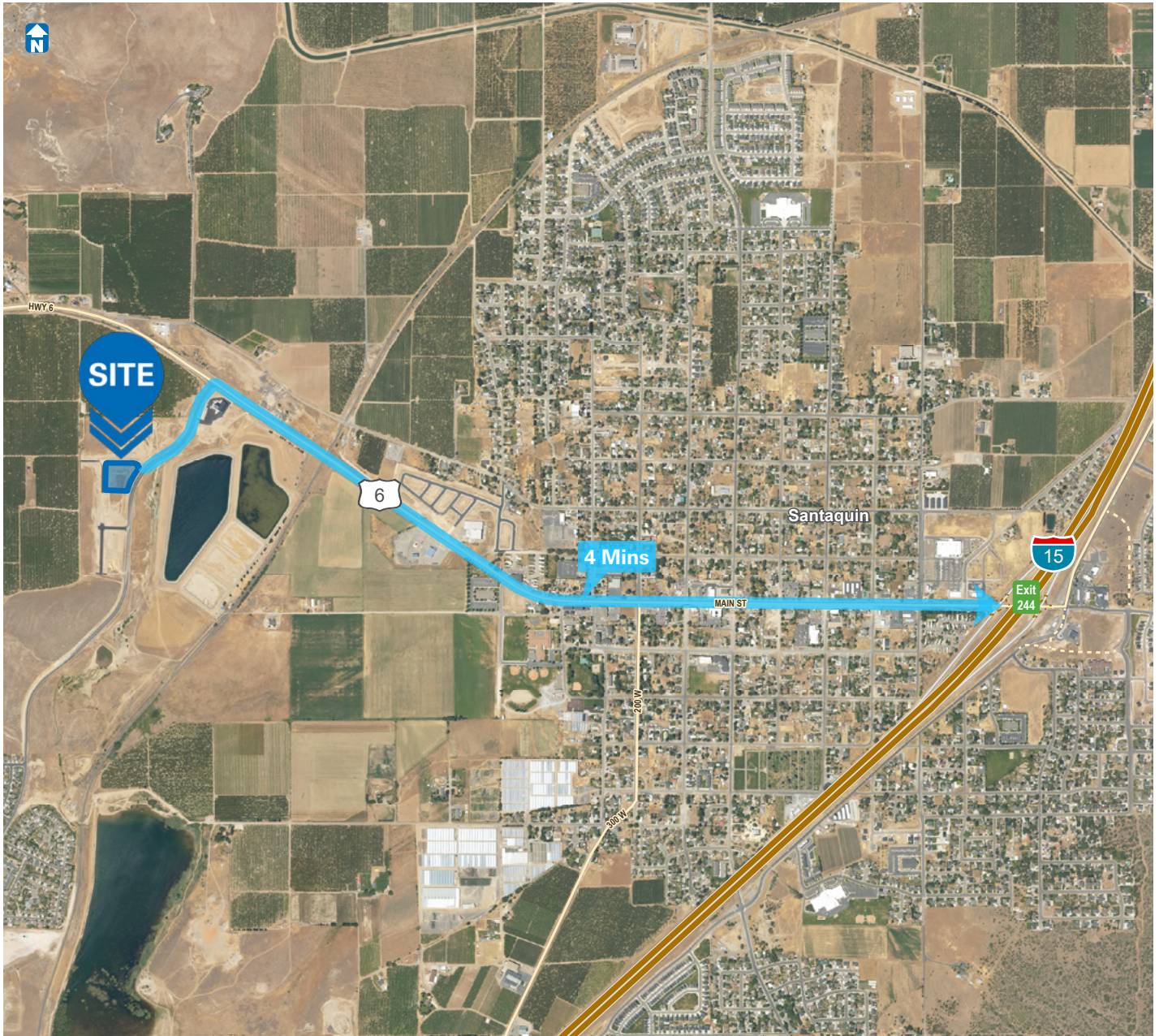
**Kolby Long**  
 Associate  
 t 801-727-4413  
 klong@newmarkmw.com

**Taylor Ogden**  
 Industrial Specialist  
 t 385-388-8942  
 togden@newmarkmw.com

376 E. 400 S.  
 Suite 120  
 Salt Lake City, UT 84111



The information contained herein has been obtained from sources deemed reliable but has not been verified and no guarantee, warranty or representation, either express or implied, is made with respect to such information. Terms of sale or lease and availability are subject to change or withdrawal without notice.



For information, please contact:

**Ben Richardson**

*Executive Managing Director*

t 801-746-4733

richardson@newmarkmw.com

**Kolby Long**

*Associate*

t 801-727-4413

klong@newmarkmw.com

**Taylor Ogden**

*Industrial Specialist*

t 385-388-8942

togden@newmarkmw.com

376 E. 400 S.

Suite 120

Salt Lake City, UT 84111

**NEWMARK**

 **MOUNTAIN WEST**

The information contained herein has been obtained from sources deemed reliable but has not been verified and no guarantee, warranty or representation, either express or implied, is made with respect to such information. Terms of sale or lease and availability are subject to change or withdrawal without notice.