

# CROSS POINTE SQUARE

2260 CROSS POINTE DR., ROCK HILL, SC 29730



*Warren Norman*  
COMPANY

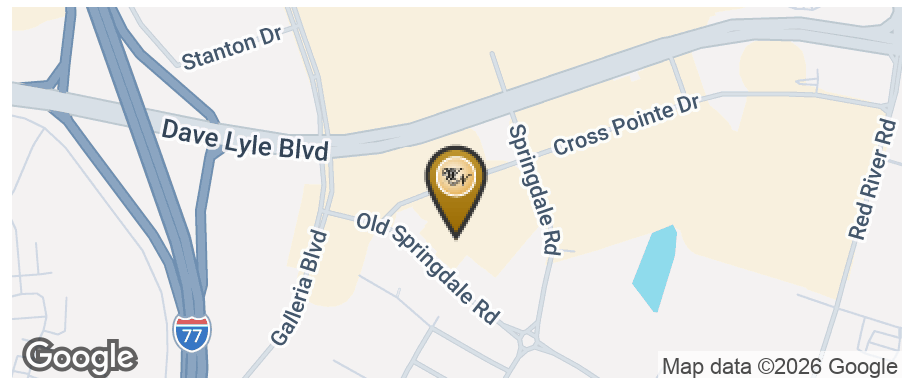


## OFFERING SUMMARY

Available SF:	1,000 - 2,000 SF
Lease Rate:	\$16.00 - 30.00 SF/yr (NNN)
Building Size:	49,085 SF
Zoning:	CC
Market:	York County

## PROPERTY OVERVIEW

Space available for lease in the Food Lion shopping center located off Dave Lyle Blvd. in Rock Hill, SC. Cross Pointe Square shopping center is surrounded by large retailers such as Lowe's, Sam's Club, Belk, Hobby Lobby, Kohl's, Walmart, and Academy Sports.



for more information, contact:

**ANDREA WALTERS**

803.366.8141

andrea@warrennorman.com

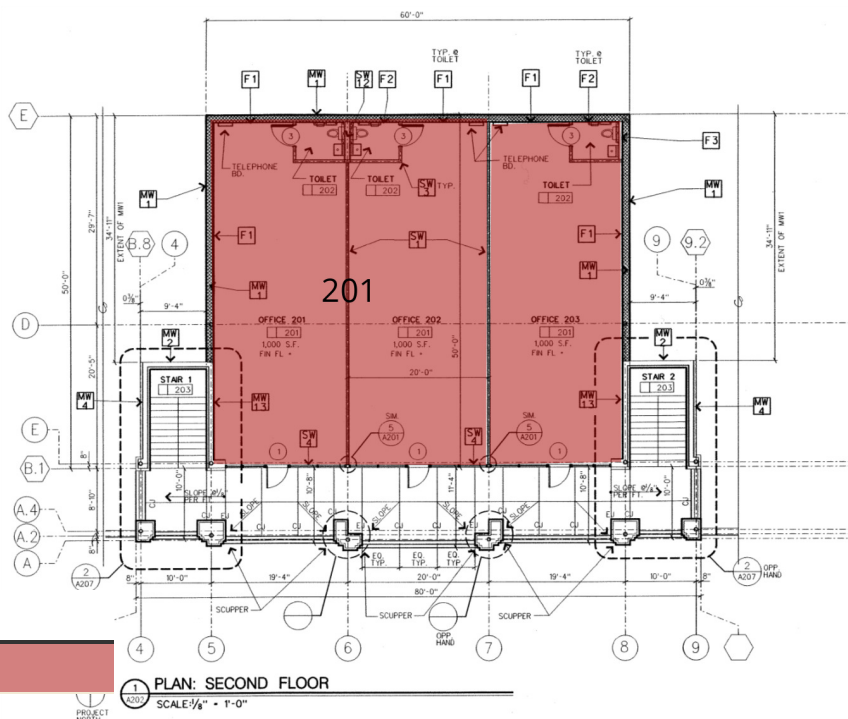


# CROSS POINTE SQUARE

2260 CROSS POINTE DR., ROCK HILL, SC 29730



Warren Norman  
COMPANY



### LEGEND

Available

### LEASE INFORMATION

Lease Type:	NNN	Lease Term:	Negotiable
Total Space:	1,000 - 2,000 SF	Lease Rate:	\$16.00 - \$30.00 SF/yr

### AVAILABLE SPACES

SUITE	TENANT	SIZE	TYPE	RATE	DESCRIPTION
2260 Cross Pointe Dr. Suite 201	Available	2,000 SF	NNN	\$16.00 SF/yr	Second floor
Suite 203	Available	1,000 SF	NNN	\$16.00 SF/yr	-

for more information, contact:

ANDREA WALTERS

803.366.8141

andrea@warrennorman.com

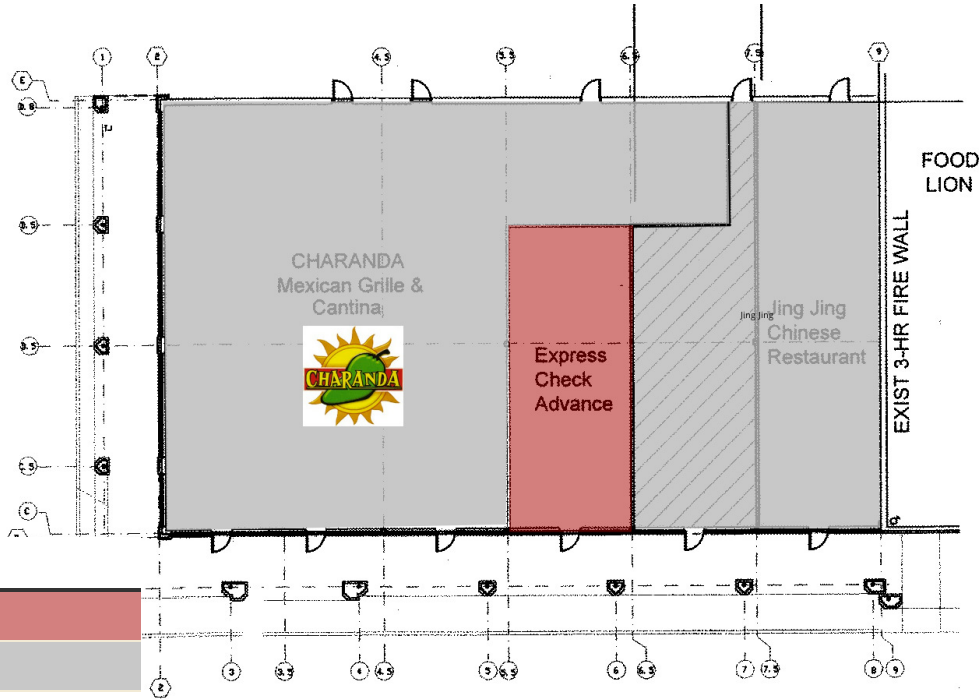


# CROSS POINTE SQUARE

2260 CROSS POINTE DR., ROCK HILL, SC 29730



*Warren Norman*  
COMPANY



### LEGEND

Available
Unavailable

### LEASE INFORMATION

Lease Type:	NNN	Lease Term:	Negotiable
Total Space:	1,000 - 2,000 SF	Lease Rate:	\$16.00 - \$30.00 SF/yr

### AVAILABLE SPACES

SUITE	TENANT	SIZE	TYPE	RATE	DESCRIPTION
Suite 096	Charanda	4,620 SF	NNN	-	-
Suite 097	Available	1,000 SF	NNN	\$25.00 - 30.00 SF/yr	-
Suite 098-099	Jing Jing	2,500 SF	NNN	-	-

for more information, contact:

**ANDREA WALTERS**

803.366.8141

andrea@warrennorman.com

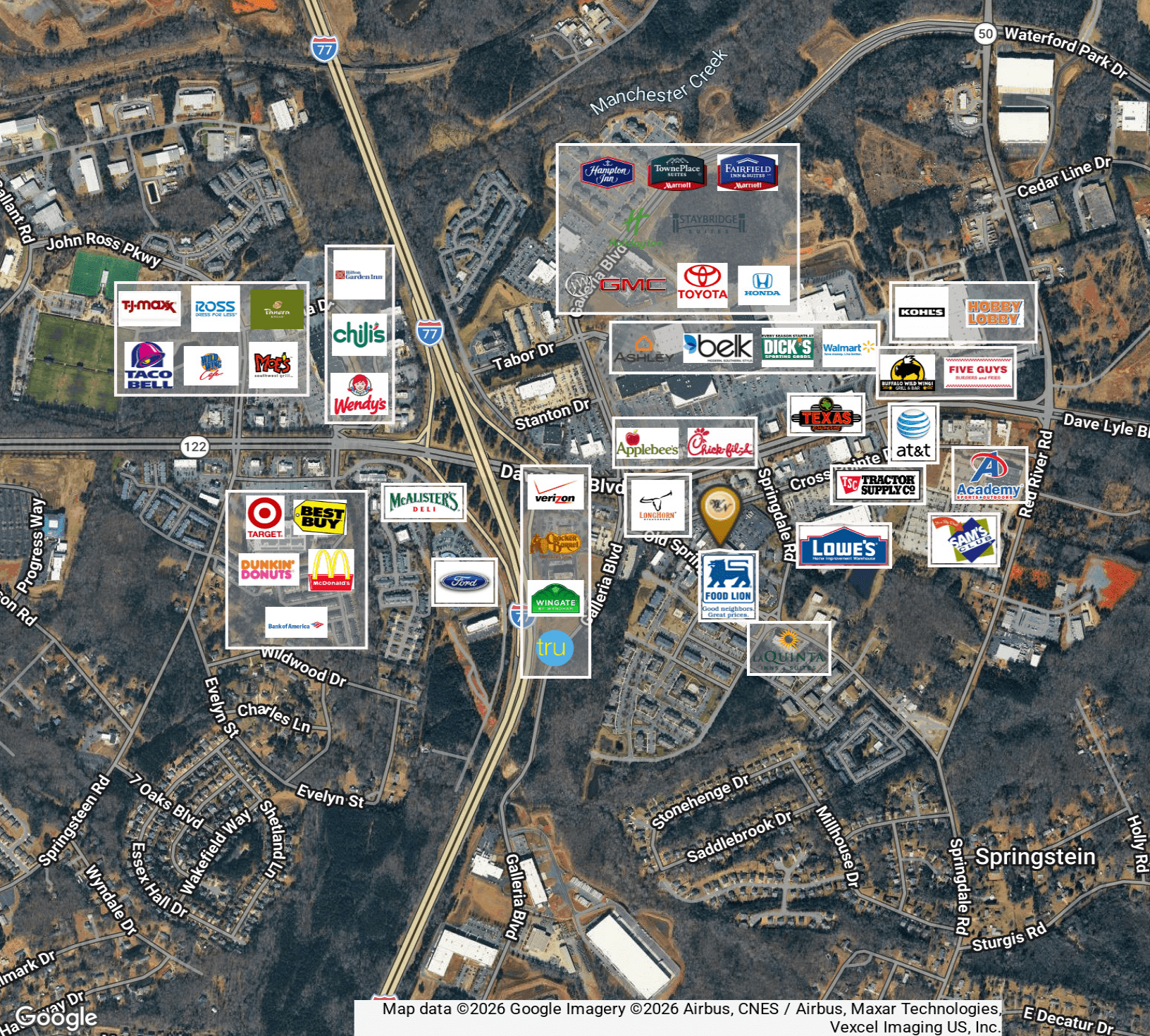


# CROSS POINTE SQUARE

2260 CROSS POINTE DR., ROCK HILL, SC 29730



Warren Norman  
COMPANY



Map data ©2026 Google Imagery ©2026 Airbus, CNES / Airbus, Maxar Technologies, Vexcel Imaging US, Inc.

for more information, contact:

ANDREA WALTERS

803.366.8141

andrea@warrennorman.com

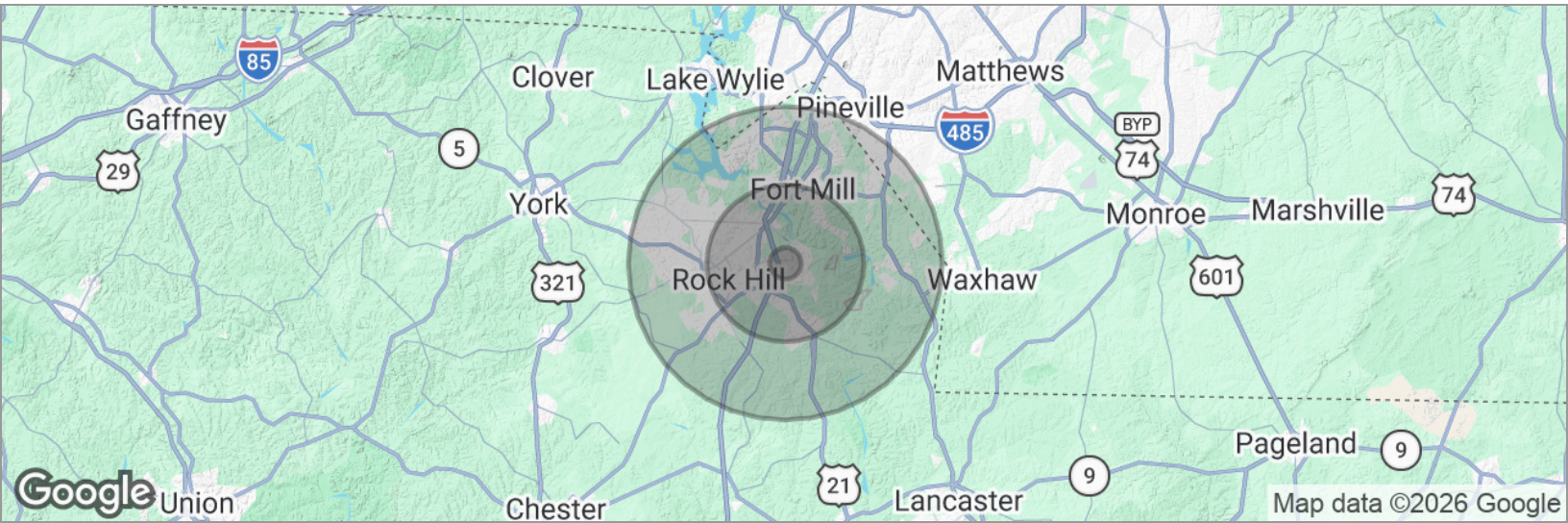


# CROSS POINTE SQUARE

2260 CROSS POINTE DR., ROCK HILL, SC 29730



*Warren Norman*  
COMPANY



## POPULATION

	1 MILE	5 MILES	10 MILES
Total population	4,636	93,144	296,238
Median age	38	39	40
Median age (Male)	37	37	39
Median age (Female)	38	40	41

## HOUSEHOLDS & INCOME

	1 MILE	5 MILES	10 MILES
Total households	1,997	36,519	112,006
# of persons per HH	2.3	2.6	2.6
Average HH income	\$70,836	\$92,353	\$129,620
Average house value	\$300,065	\$300,495	\$428,400

\* Demographic data derived from 2020 ACS - US Census

for more information, contact:

**ANDREA WALTERS**

803.366.8141

andrea@warrennorman.com

