

# Corner Retail / Medical Available

**100 East Broadway  
NW Corner of Pike Street**

**+/- 2,500 Rentable Square Feet**

**Prime Two Bridges Neighborhood**

**Corner Frontage of About 80 Feet**

**18' Ceilings Throughout**

**Previously Urgent Care Center**

**Asking Rent Upon Request**

Prime opportunity to lease a prominent corner space in the highly trending area where Two Bridges meets Chinatown. Previously an urgent care center, this ground floor is move in ready for a medical use but can be available for all uses. With about 80' of wraparound frontage, 18' Ceilings, heating & cooling in place and almost floor to ceiling windows, there is a ton of opportunity for all kinds of uses.

## Location Highlights

Located at the base of a newly constructed office building. Heavily trafficked intersection of East Broadway right next to Manhattan Bridge and around the corner from Dimes Square. Close to the B,D & F trains and adjacent to Citibike.

*Neighbors Include: Fairfield by Marriot ♦ Golden Diner ♦ Madison LES Hotel ♦ Pier 35 ♦ Dimes Square*



*For More Information Contact:*

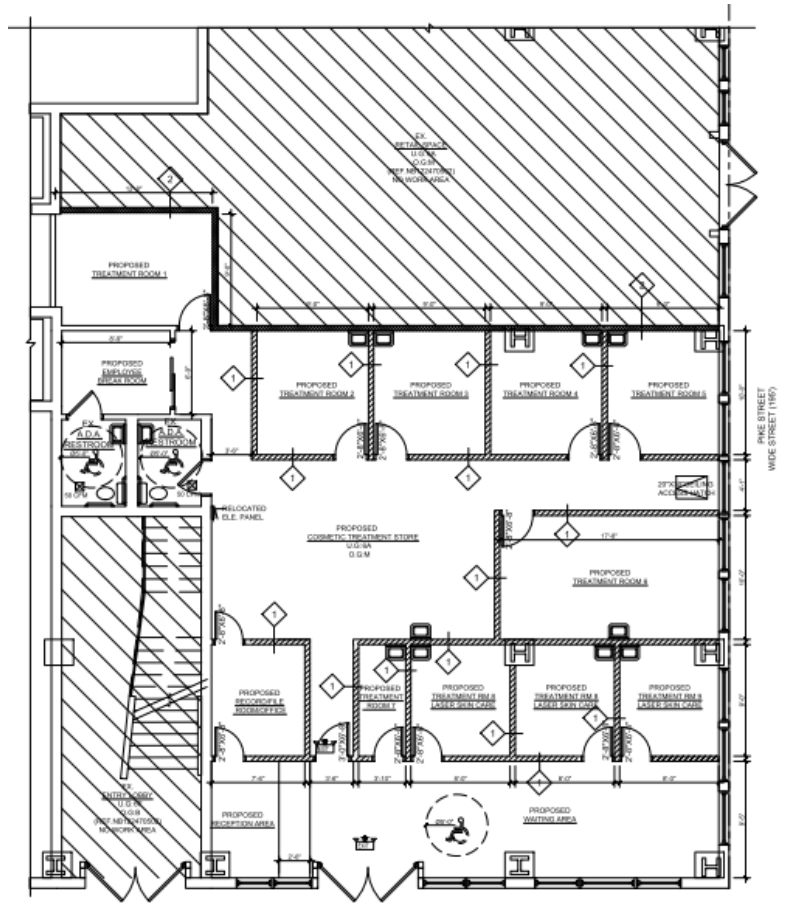
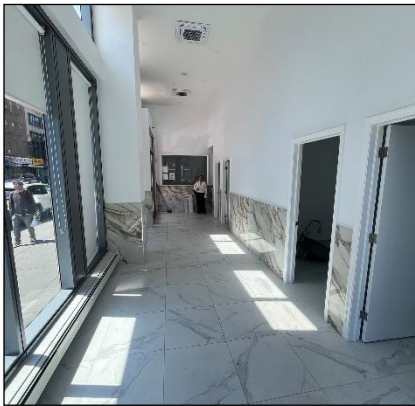
**Jeffrey Angel**  
**212-719-7017**  
**Jeffrey.angel@resnewyork.com**

**Yu Juan "June" Li**  
**646-593-8112**  
**june@resnewyork.com**



The information contained herein has been provided by sources that we deem reliable. However, no expressed or implied warranties are made as to the accuracy of the information and it should not be relied upon in any way. All information contained herein should be independently verified prior to anyone entering into an form of legal binding agreement to purchase, lease or otherwise procure the premises or situation presented herein. Information is subject to change or withdrawal without notice and may contain errors and/or omissions.

# 100 East Broadway



PROPOSED PARTIAL FIRST FLOOR PLAN EAST BROADWAY WIDE STREET (80') SCALE: 1/8" = 1'-0"

For More Information Contact:

**Jeffrey Angel**  
**212-719-7017**  
[Jeffrey.angel@resnewyork.com](mailto:Jeffrey.angel@resnewyork.com)

**Yu Juan "June" Li**  
**646-593-8112**  
[june@resnewyork.com](mailto:june@resnewyork.com)



The information contained herein has been provided by sources that we deem reliable. However, no expressed or implied warranties are made as to the accuracy of the information and it should not be relied upon in any way. All information contained herein should be independently verified prior to anyone entering into an form of legal binding agreement to purchase, lease or otherwise procure the premises or situation presented herein. Information is subject to change or withdrawal without notice and may contain errors and/or omissions.

# 100 East Broadway

## Location Highlights

Located at the base of a newly constructed office building. Heavily trafficked intersection of East Broadway right next to Manhattan Bridge and around the corner from Dimes Square. Close to the B,D & F trains and adjacent to Citibike. *Neighbors Include: Fairfield by Marriot ♦ Golden Diner ♦ Madison LES Hotel ♦ Pier 35 ♦ Dimes Square*

## Subway Station Information

### 2024 Grand Street Ridership

Avg Weekday - 17,399

Avg Annual - 5,902,255

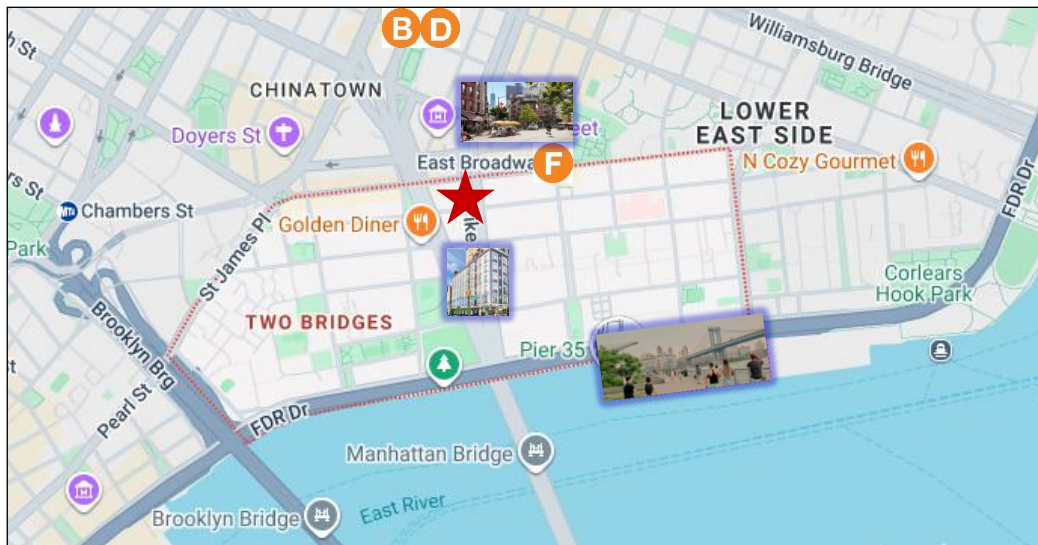
Avg Weekend - 26,763

### 2024 East Broadway Ridership

Avg Weekday - 10,598

Avg Annual - 3,596,399

Avg Weekend - 16,284



For More Information Contact:

**Jeffrey Angel**  
**212-719-7017**  
[Jeffrey.angel@resnewyork.com](mailto:Jeffrey.angel@resnewyork.com)

**Yu Juan "June" Li**  
**646-593-8112**  
[june@resnewyork.com](mailto:june@resnewyork.com)



The information contained herein has been provided by sources that we deem reliable. However, no expressed or implied warranties are made as to the accuracy of the information and it should not be relied upon in any way. All information contained herein should be independently verified prior to anyone entering into an form of legal binding agreement to purchase, lease or otherwise procure the premises or situation presented herein. Information is subject to change or withdrawal without notice and may contain errors and/or omissions.