



# 1000 Lively (Chase) Blvd

Elk Grove Village, IL 60007



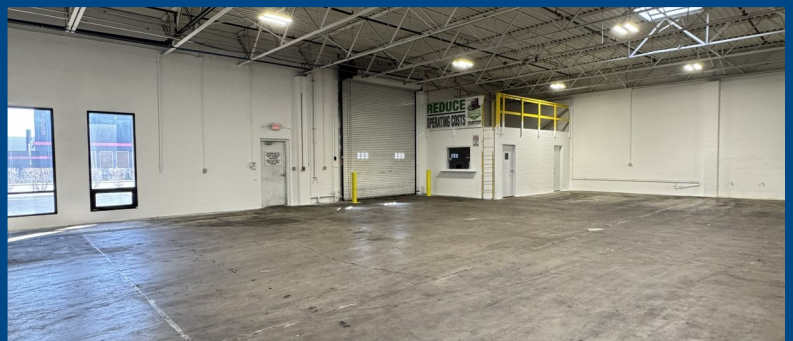
## Building Highlights

- 54,572 S.F. gross +/- Land
- 7,600 S.F. gross +/- Building
- 2,240 S.F. gross +/- Office
- 5,360 S.F. gross +/- Warehouse/Maintenance Area
- 14' Clear +/-
- 2 DIDs (12' x 14')
- 15 Car Stalls +/-
- 30 Bobtail/Tractor Stalls +/- (Outdoor Storage)
- Triple Catch Basin
- Enclosed/Fenced Yard Space
- Gas Unit Heaters
- Air Conditioned Office
- Rental Rate: Subject to Offer
- CAM: Lessee Responsibility

Modern & High Image

Excellent Corner Exposure

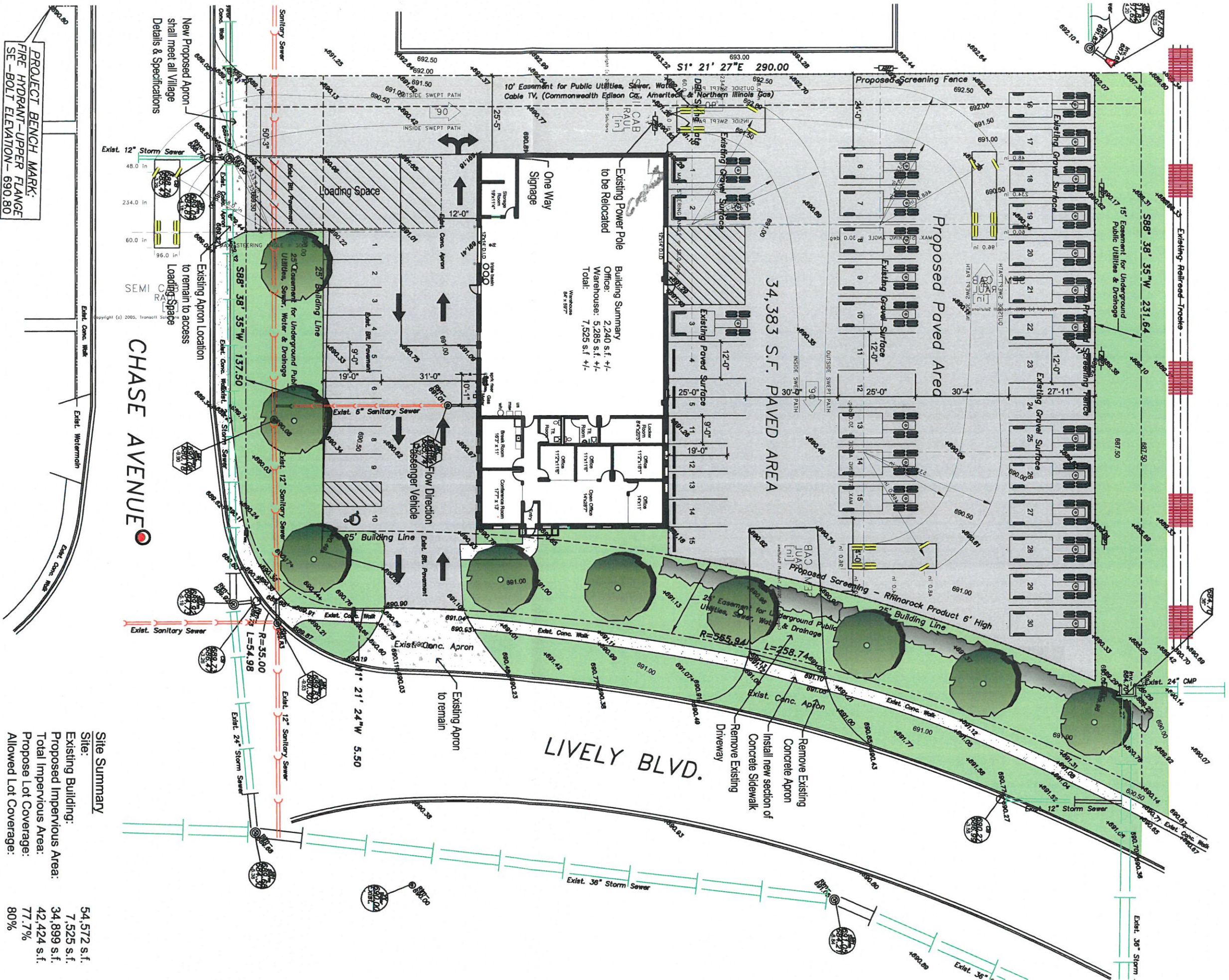
Ideal for Fleet Maintenance/Repair & Parking



*Building a better image*

For more information contact: Giovanni Gullo or Mariann Gullo • Email: [info@gullo.com](mailto:info@gullo.com) • Phone: 847.364.7000  
Gullo International | Development Corporation | Realty Group • 1100 Landmeier Road • Elk Grove Village, IL 60007

All information herein is from sources deemed reliable but not guaranteed accurate. Subject to errors, omissions, and to change of price and terms, prior sale or lease, all without notice. In compliance with Illinois law, Gullo International Realty Group (broker) hereby gives written notice of the existence of an agency relationship between broker and the owner of the above referenced property. All Gullo International Realty Group real estate agents represent the owner of the above property in negotiation of price terms, conditions, and the consummation of any lease or sale contract.



PROJECT BENCH MARK:  
 FIRE HYDRANT-UPPER FLANGE  
 SE-BOLT ELEVATION- 690.80

Pin Numbers  
 08-27-303-080-0000  
 08-27-303-081-0000

**Proposed Site & Building Plan**

1000 Chase Avenue  
 Elk Grove Village, IL

**Site Summary**

Site:	54,572 s.f.
Existing Building:	7,525 s.f.
Proposed Impervious Area:	34,899 s.f.
Total Impervious Area:	42,424 s.f.
Propose Lot Coverage:	77.7%
Allowed Lot Coverage:	80%

Loading Docks:	0
Drive in Doors Warehouse:	2
Car Parking:	15
Tractor Parking:	30

February 3, 2021

