



1212 Market Street

1,657 - 14,000 RSF Contiguous Space

Great Non-Profit, Professional Services Office Space
\$2/psf per year procuring brokerage commission

Jean Ko

415 810 1914

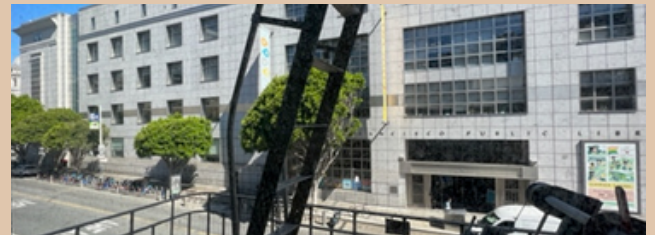
Jean.ko@jll.com

RE Lic #: 01184706



1212 Market Street

Suite	Size	Term	Rate	Build Out
Retail Space	1,657 RSF	1-5 years	Negotiable	Retail Space
Retail Space (Grove St. side)	2,069 RSF	2-10 years	Negotiable	Leased Retail
Suite 100 (Market St. side)	1,694 RSF	2-10 years	\$19/SF IG	Fully furnished, 1 glass conf room, 2 window lined meeting rooms, reception area, 2 interior conference rooms.
Suite 120 (Grove St. side)	2,362 RSF	2-10 years	\$19/SF IG	Open space with 1 glass conference room and kitchen
Suite 200 (Market St. side)	1,611 RSF	2-10 years	\$20's IG	Leased Office Space
Suite 250 (Grove St. side)	2,459 RSF	2-10 years	\$20's IG	Leased Office Space
Suite 300 (Market St. Side)	1,771 RSF	2-10 years	\$19/SF IG	Furnished space, 2 conference rooms, kitchen, and LVT floors
Suite 320 (Grove St. side)	2,026 RSF	2-10 years	\$19/SF IG	Open plan with 2 conference rooms and kitchen
Basement Office Space 1	1,172 RSF	2-10 years	\$1/psf/month FSG	Office/ Storage Space
Basement Office Space 2	570 RSF	2-10 years	\$1/psf/month FSG	Office/ Storage Space
Basement Office Space 3	635 RSF	2-10 years	\$1/psf/month FSG	Office/ Storage Space
Basement Office Space 4	1,010 RSF	2-10 years	\$1/psf/month FSG	Office/ Storage Space
Basement Office Space 5	306 RSF	2-10 years	\$1/psf/month FSG	Office/ Storage Space
Basement Office Space 6	279 RSF	2-10 years	\$1/psf/month FSG	Office/ Storage Space



Jean Ko

415 810 1914

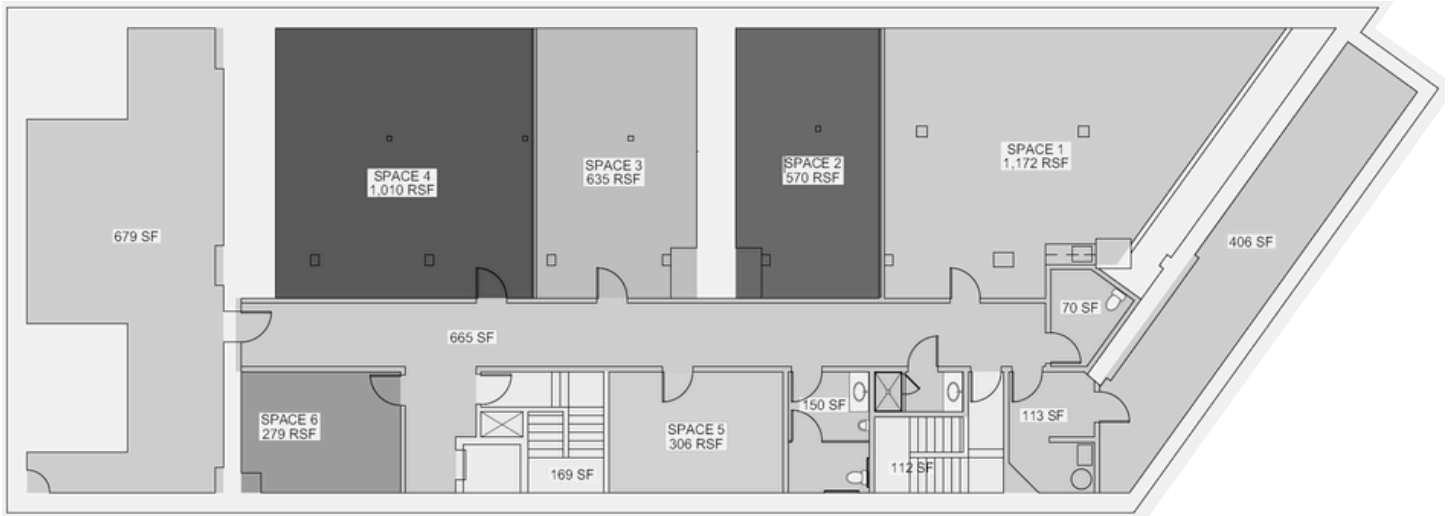
Jean.ko@jll.com

RE Lic #: 01184706



1212 Market Street

Basement Space



RSF	Build Out	Term	Rate
Bsmt. Office Space 1: 1,172 RSF	Office/ Storage Space	2-10 years	\$1/psf/moFSG
Bsmt. Office Space 2: 570 RSF	Office/ Storage Space	2-10 years	\$1/psf/moFSG
Bsmt. Office Space 3: 635 RSF	Office/ Storage Space	2-10 years	\$1/psf/moFSG
Bsmt. Office Space 4: 1,010 RSF	Office/ Storage Space	2-10 years	\$1/psf/moFSG
Bsmt. Office Space 5: 306 RSF	Office/ Storage Space	2-10 years	\$1/psf/moFSG
Bsmt. Office Space 6: 279 RSF	Office/ Storage Space	2-10 years	\$1/psf/moFSG

Jean Ko

415 810 1914

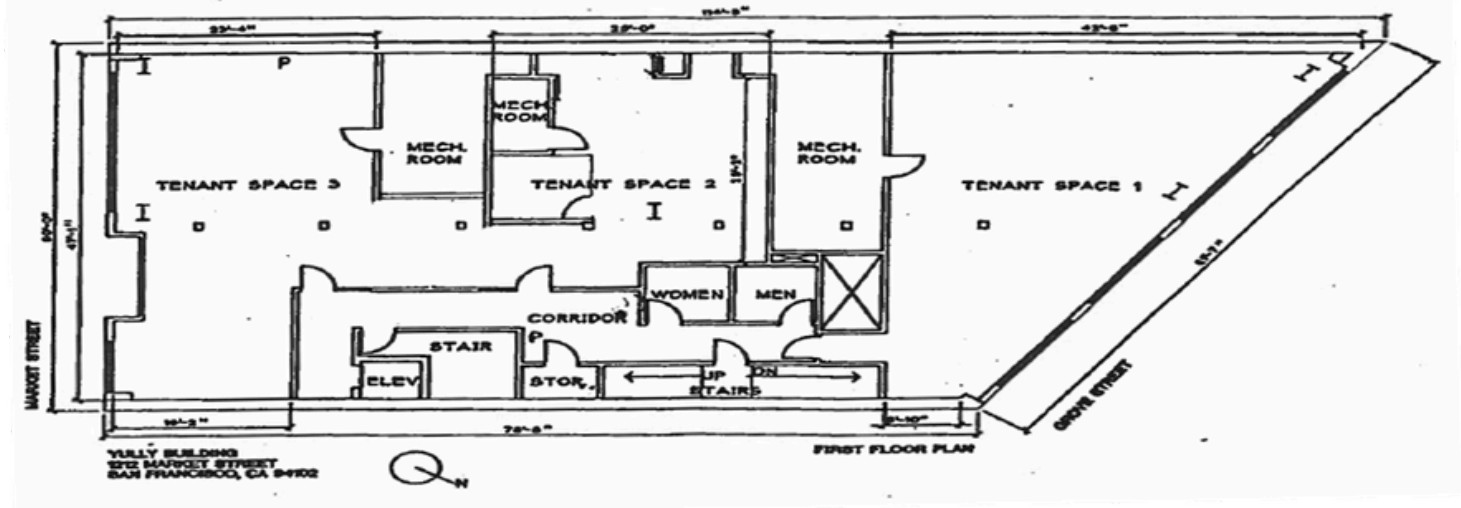
Jean.ko@jll.com

RE Lic #: 01184706



1212 Market Street

1st Floor Space



RSF	Build Out	Term	Rate
Suite 100 (Market St side) : 1,694 RSF	Fully furnished, 1 glass conf room	2-10 years	\$19/SF IG
Suite 120 (Grove St side): 2,362 RSF	Open space with 1 glass conf room	2-10 years	\$19/SF IG



Jean Ko

415 810 1914

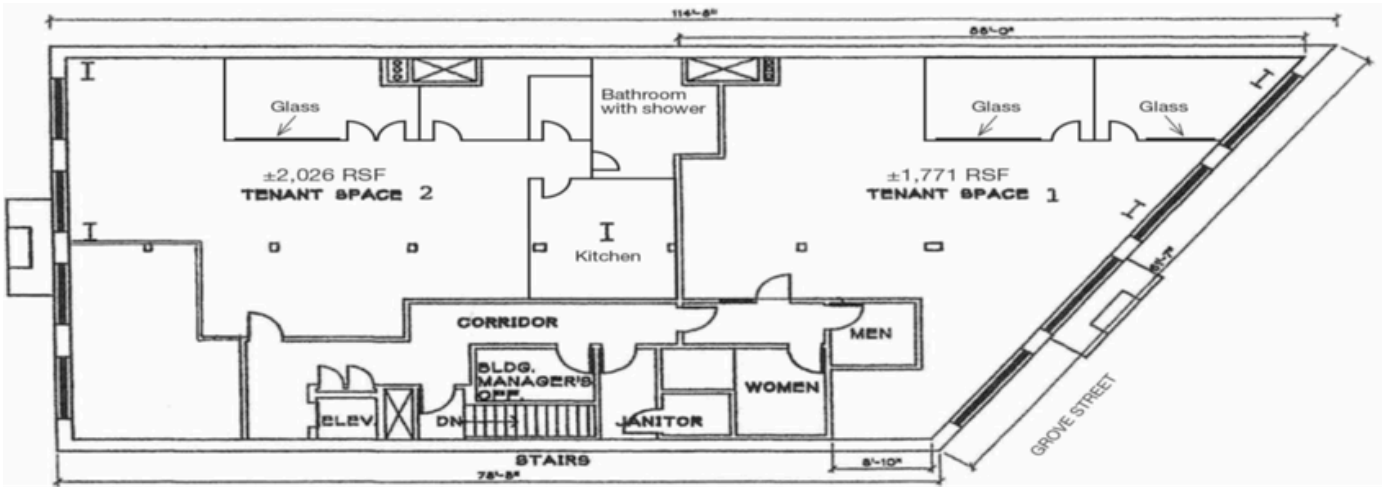
Jean.ko@jll.com

RE Lic #: 01184706



1212 Market Street

3rd Floor Space



RSF	Build Out	Term	Rate
Suite 300 (Market St. Side): 1,771 RSF	Furnished space, 2 conference rooms, kitchen, and LVT floors	2-10 years	\$19/SF IG
Suite 320 (Grove St Side): 2,026 RSF	Open plan with 2 conf rooms	2-10 years	\$19/SF IG



Jean Ko

415 810 1914

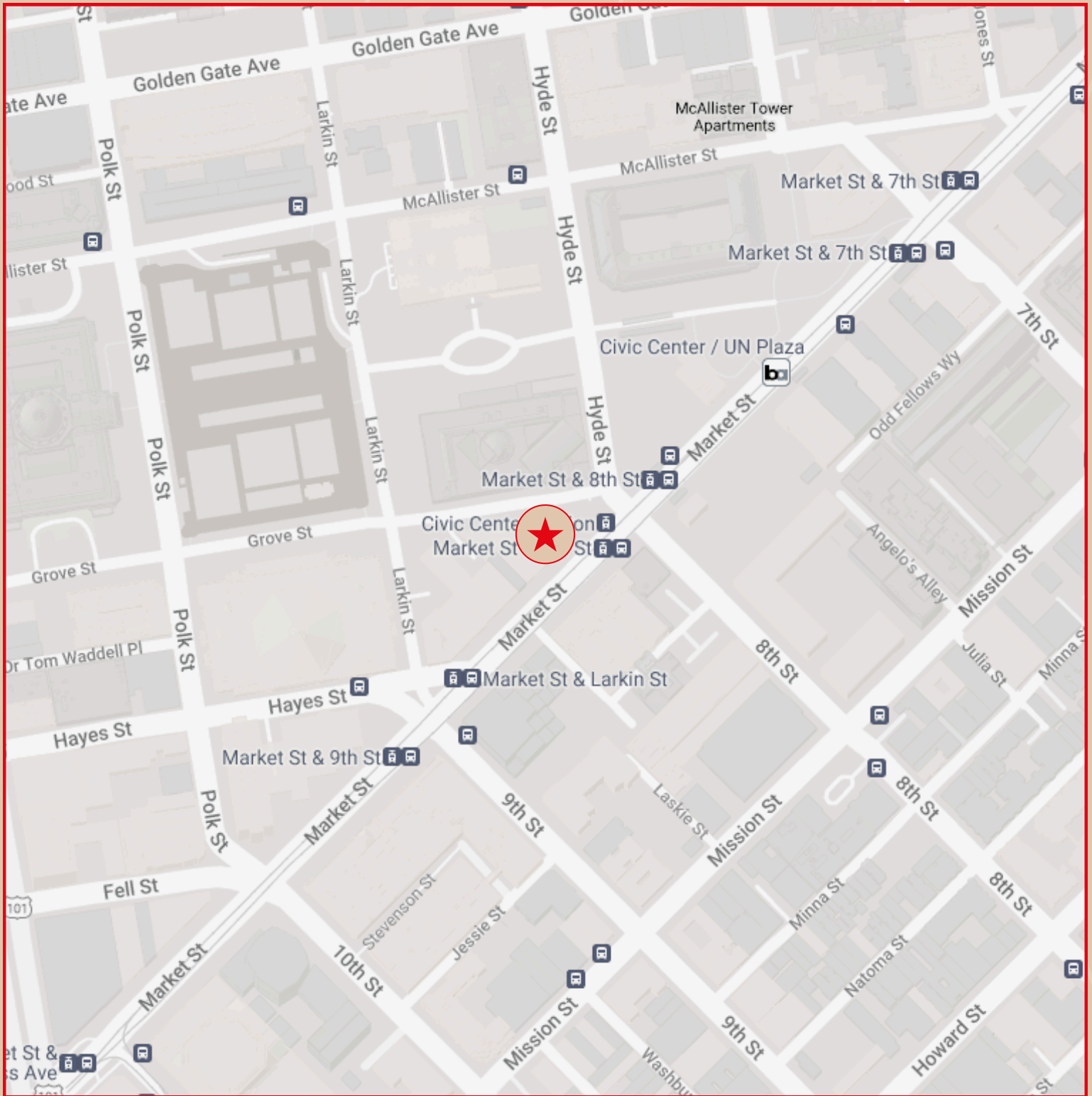
Jean.ko@jll.com

RE Lic #: 01184706



1212 Market Street

Location Map



Jean Ko

415 810 1914

Jean.ko@jll.com

RE Lic #: 01184706

