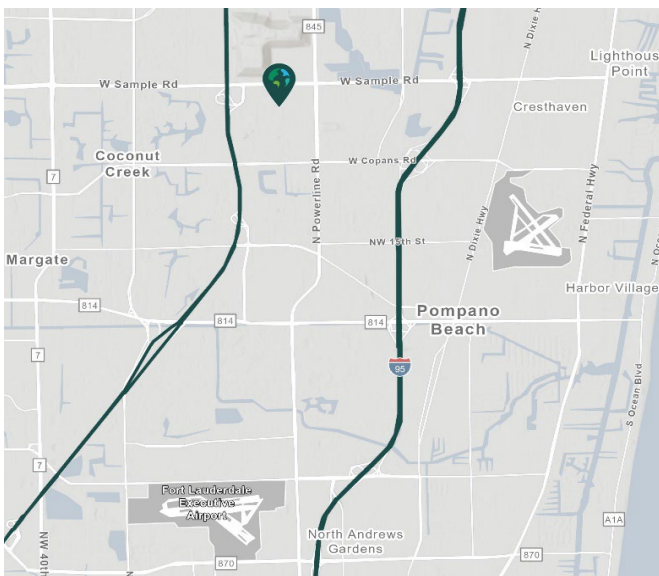


40,846 SF

3000 NW 27th Avenue
Pompano Beach, FL 33069

Prologis Pompano Park



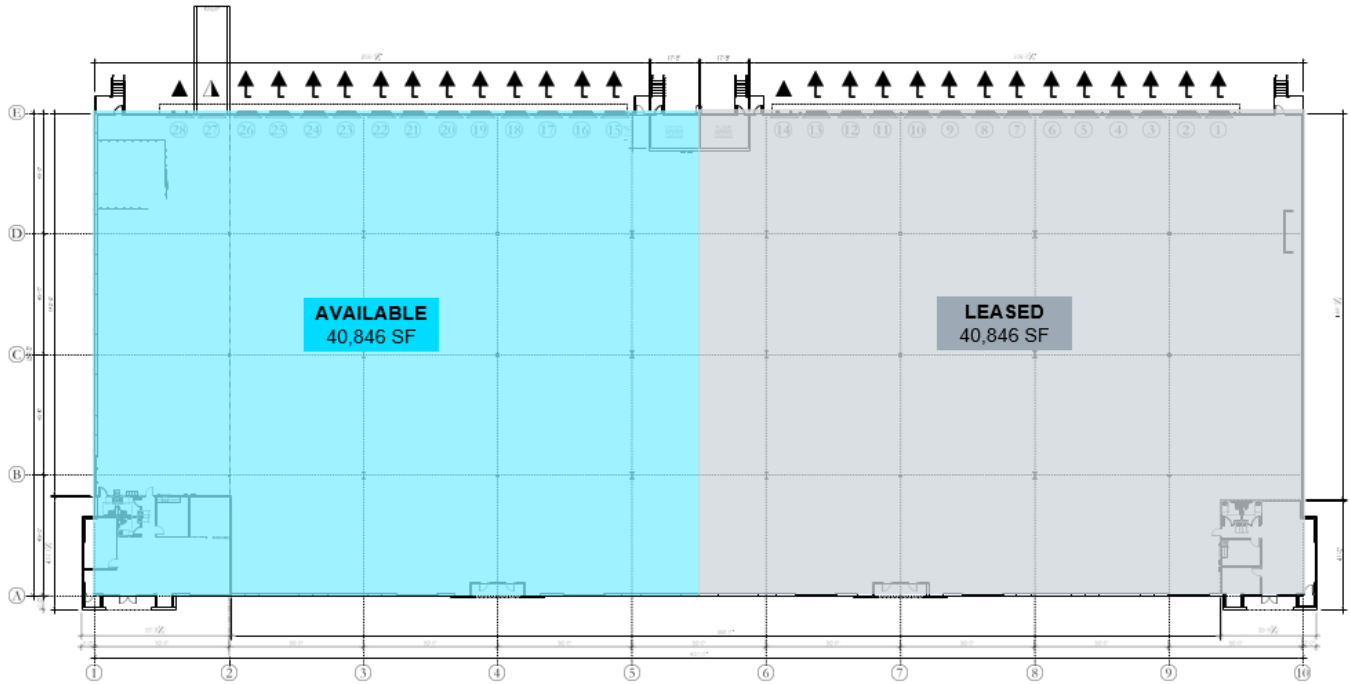
- Geographically central to service the Tri-County area of Broward, Palm Beach, and Miami-Dade Counties.
- Immediate access to I-95 with Florida's Turnpike and the Sawgrass Expressway just minutes away.
- Prologis Clear Lease[®] - Know your lease expenses and capital cost with greater certainty.

Property Features

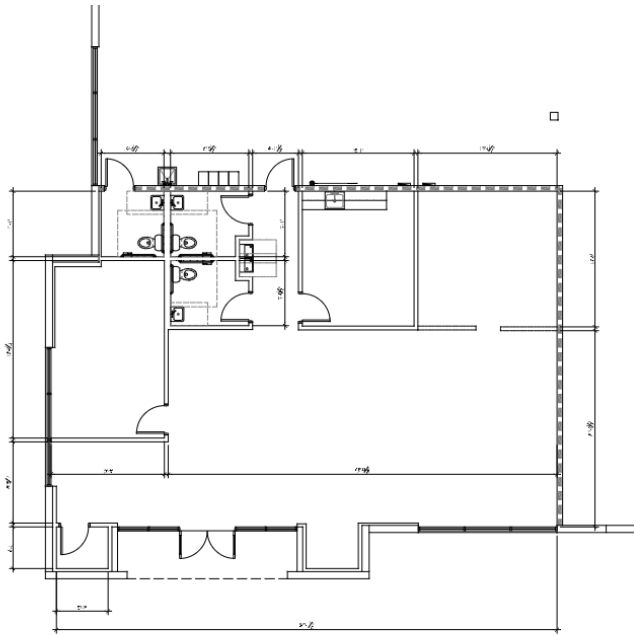
Available Space	40,846 SF
Office SF	SF to be confirmed
Clear Height	30'
Column Spacing	50' x 45'
Dock Doors	13 docks
Drive-In Doors	1 drive-in door
Building Power	1600 Amps / 480 Volt power to the building
Parking	1/1,000
A/C	100% air-conditioned warehouse
Sprinkler	ESFR
Lighting	LED Motion Sensor
Availability	October 2026



Unlock the full potential of your warehouse with one strategic, single-source partner.



 AVAILABLE
 LEASED



Cushman & Wakefield
Chris Metzger

Chris.metzger@cushwake.com
ph +1 954 415 9155

Prologis
Ashley McMullen

amcmullen@prologis.com
ph +1 954 316 1778
prologis.com