

FOR LEASE

316TH PROFESSIONAL PLAZA

1825 S 316TH ST, FEDERAL WAY, WA



Modern Professional Office

Entire second floor available

Access via elevator and staircase

8,265 SF

\$17.00 PSF, NNN

60 parking stalls for building

Located in the heart of Federal Way,
near The Commons, Target and Trader Joe's

Potential monument signage

Option to keep all existing furniture, including
cubicles, desks, and chairs

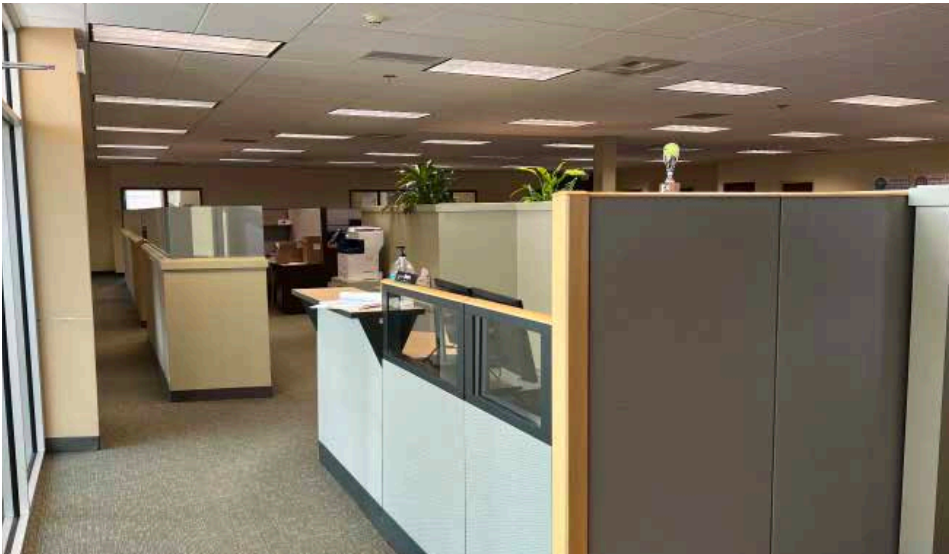
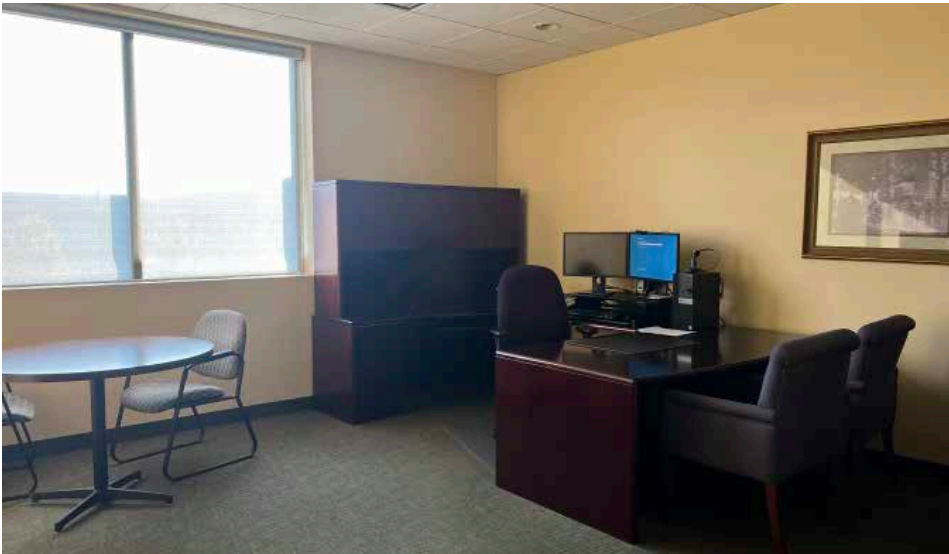
1 MIN
DRIVE TO HWY 99

4 MIN
DRIVE TO I-5



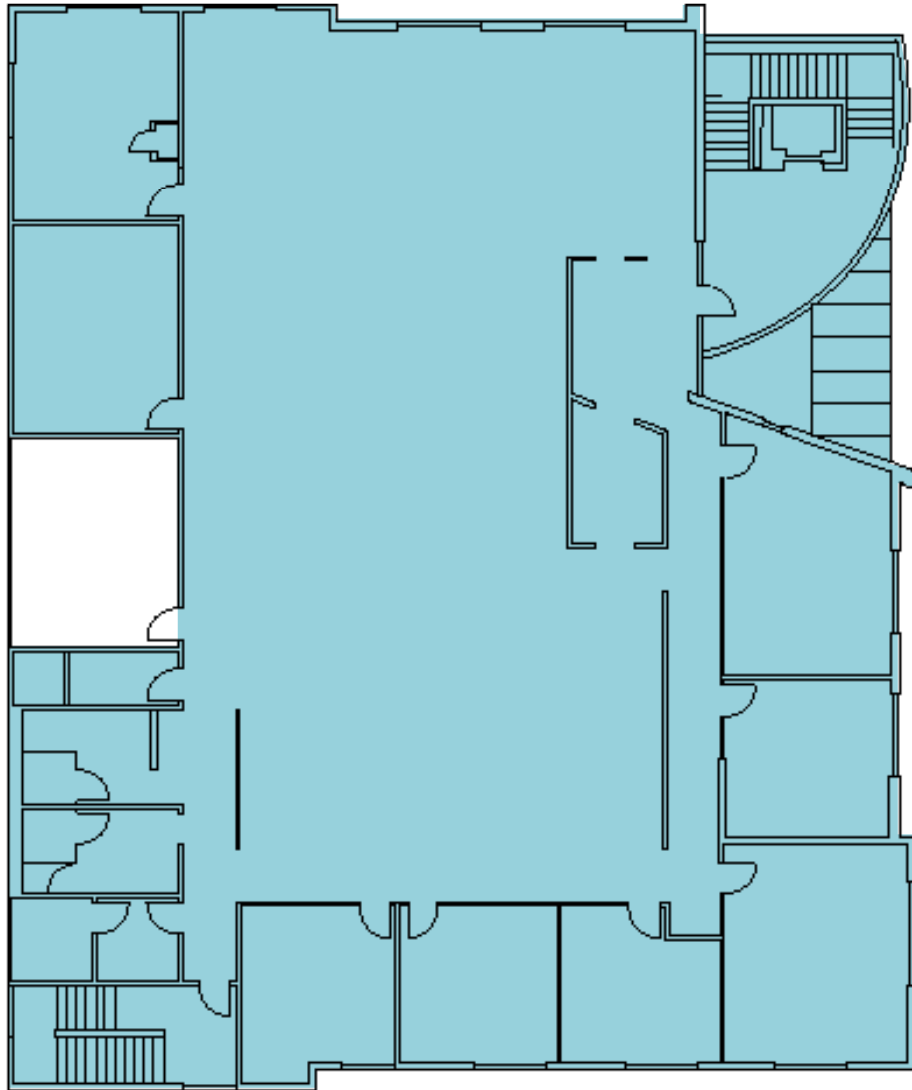


316TH PROFESSIONAL PLAZA



*Options to keep a;ll existing furniture, uncliding cubicles, desks, and chairs

SUITE 200



8,265 SF

AVAILABLE

60

SHARED PARKING STALLS

4

LARGE CONFERENCE ROOMS,
LUNCH ROOM, STORAGE ROOM,
PRIVATE RESTROOM



Exclusively listed by

JOEL SHABEL

Vice President

253.722.1406

joel.shabel@kidder.com

WILL FRAME

Executive Vice President

253.948.6895

will.frame@kidder.com

DREW FRAME, SIOR

Senior Vice President

253.948.7032

drew.frame@kidder.com

KIDDER.COM