

1195-1197 ROCHESTER ROAD
TROY, MICHIGAN

INDUSTRIAL FOR LEASE
1,600 – 2,000 Square Feet Units Available



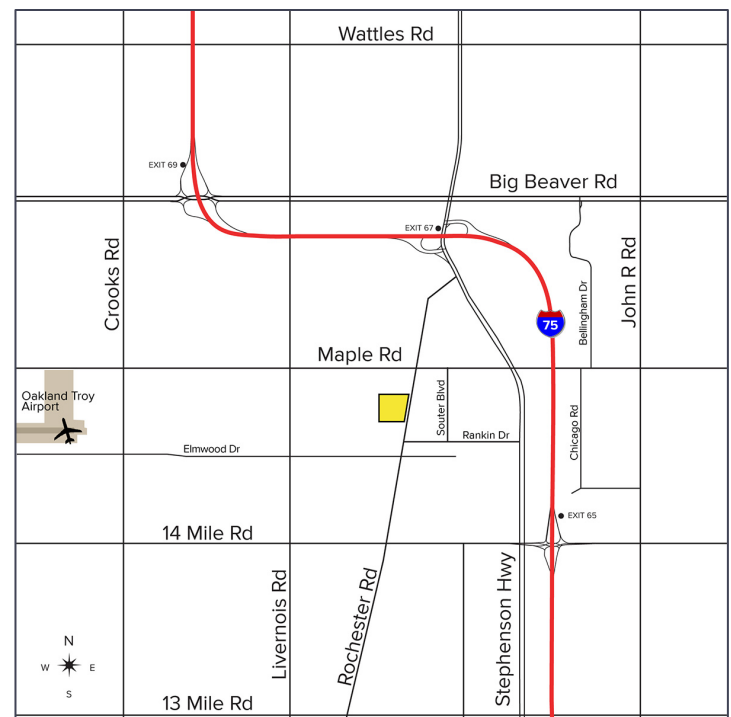
**SIGNATURE
ASSOCIATES**
KNOW SIGNATURE | KNOW RESULTS

TROY TECH COMMONS



PROPERTY FEATURES

- 1,600 – 2,000 square foot units available
- 14' clear height
- (1) 12x12 grade level door per unit
- 200 amps, 240 volts power
- Buildings are being completely renovated in 2023 with upgraded fixtures and landscaping
- Ample, shared parking
- Great small units in the heart of Troy
- Located on 4.186 acres
- Additional 1 acre lot, all or part, available for lease for outside storage or trailer parking
- Lease Rate: \$13.95/sq. ft. Gross



For more information, please contact:

KRIS PAWLOWSKI
(248) 359 3801
kpawlowski@signatureassociates.com

PAUL HOGE
(248) 948 0103
paulhoge@signatureassociates.com

SIGNATURE ASSOCIATES
One Towne Square, Suite 1200
Southfield, MI 48076
www.signatureassociates.com

1195-1197 Rochester Road – Troy, Michigan

Industrial For Lease

1,600 – 2,000
Square Feet
AVAILABLE

Site Plan

AVAILABILITY

SUITE	TOTAL SF & OFFICE SF	GLD/DOCKS	RATE	AVAILABLE
1195 - E	1,600/500	1/0	\$13.95 G	Immediately
1195 - K	2,000/775	1/0	\$13.95 G	Immediately



For more information, please contact:

KRIS PAWLOWSKI
(248) 359 3801
kpawlowski@signatureassociates.com

PAUL HOGE
(248) 948 0103
paulhoge@signatureassociates.com

SIGNATURE ASSOCIATES
One Towne Square, Suite 1200
Southfield, MI 48076
www.signatureassociates.com

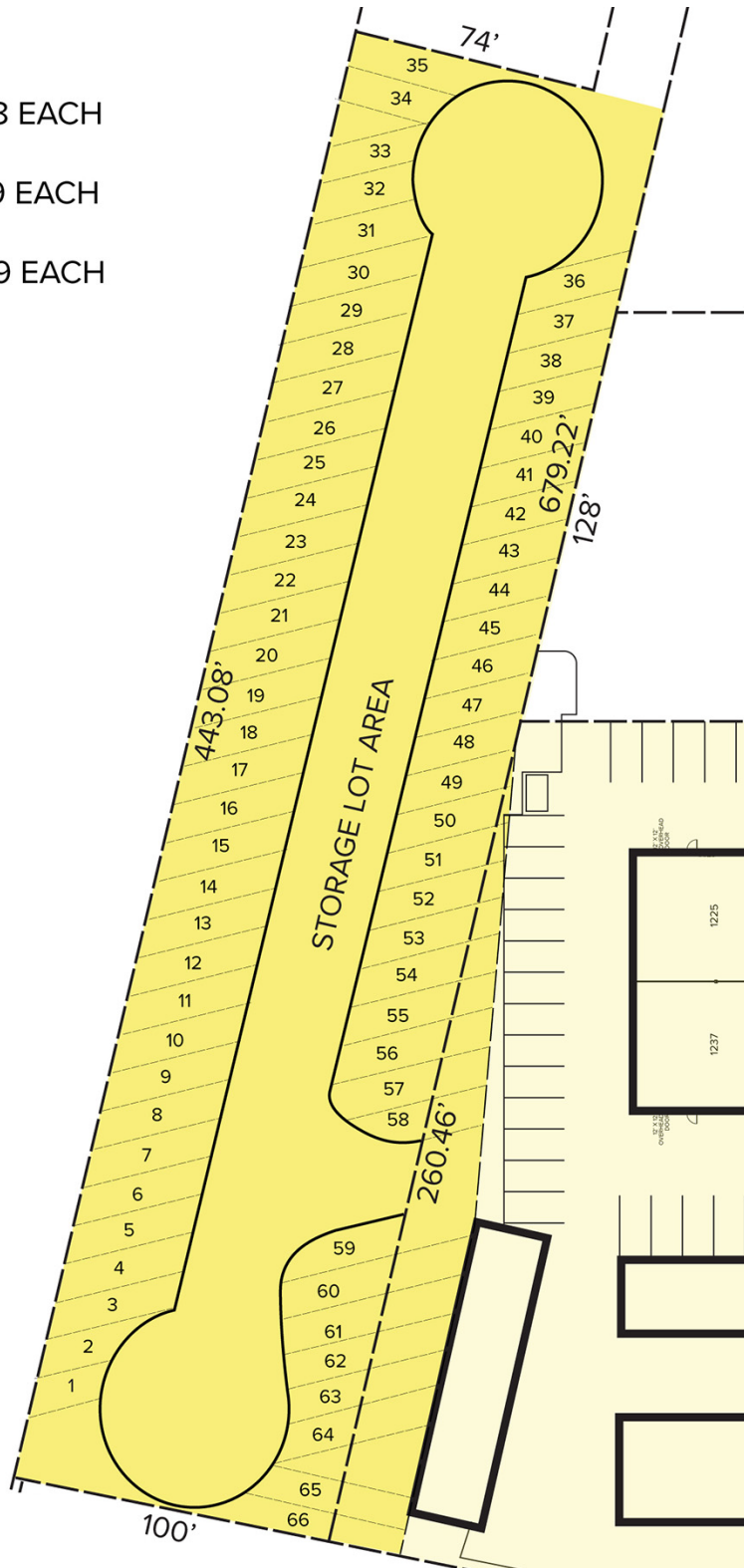
1195-1197 Rochester Road – Troy, Michigan

Industrial For Lease

1,600 – 2,000
Square Feet
AVAILABLE

Parking Plan

- 1 12' x 24' FOR \$98 EACH
- 3 11' x 20' FOR \$79 EACH
- 10 +/- 11' x 38' FOR \$139 EACH



For more information, please contact:

KRIS PAWLOWSKI
(248) 359 3801
kpawlowski@signatureassociates.com

PAUL HOGE
(248) 948 0103
paulhoge@signatureassociates.com

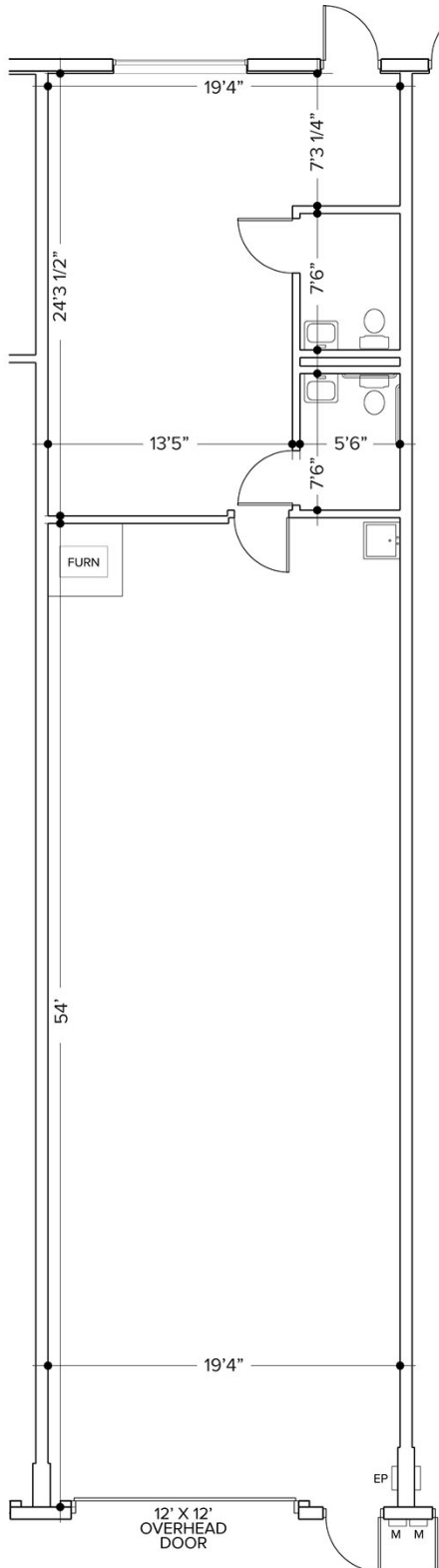
SIGNATURE ASSOCIATES
One Towne Square, Suite 1200
Southfield, MI 48076
www.signatureassociates.com

1195-1197 Rochester Road – Troy, Michigan

Industrial For Lease

1,600 – 2,000
Square Feet
AVAILABLE

Floor Plan



AVAILABILITY

SUITE	TOTAL SF & OFFICE SF	GLD/DOCKS	RATE	AVAILABLE
1195 - E	1,600/500	1/0	\$13.95 G	Immediately

For more information, please contact:

KRIS PAWLOWSKI
(248) 359 3801
kpawlowski@signatureassociates.com

PAUL HOGE
(248) 948 0103
paulhoge@signatureassociates.com

SIGNATURE ASSOCIATES
One Towne Square, Suite 1200
Southfield, MI 48076
www.signatureassociates.com

1195-1197 Rochester Road – Troy, Michigan

Industrial For Lease

1,600 – 2,000
Square Feet
AVAILABLE

Interior Photos Suite E



For more information, please contact:

KRIS PAWLOWSKI
(248) 359 3801
kpawlowski@signatureassociates.com

PAUL HOGE
(248) 948 0103
paulhoge@signatureassociates.com

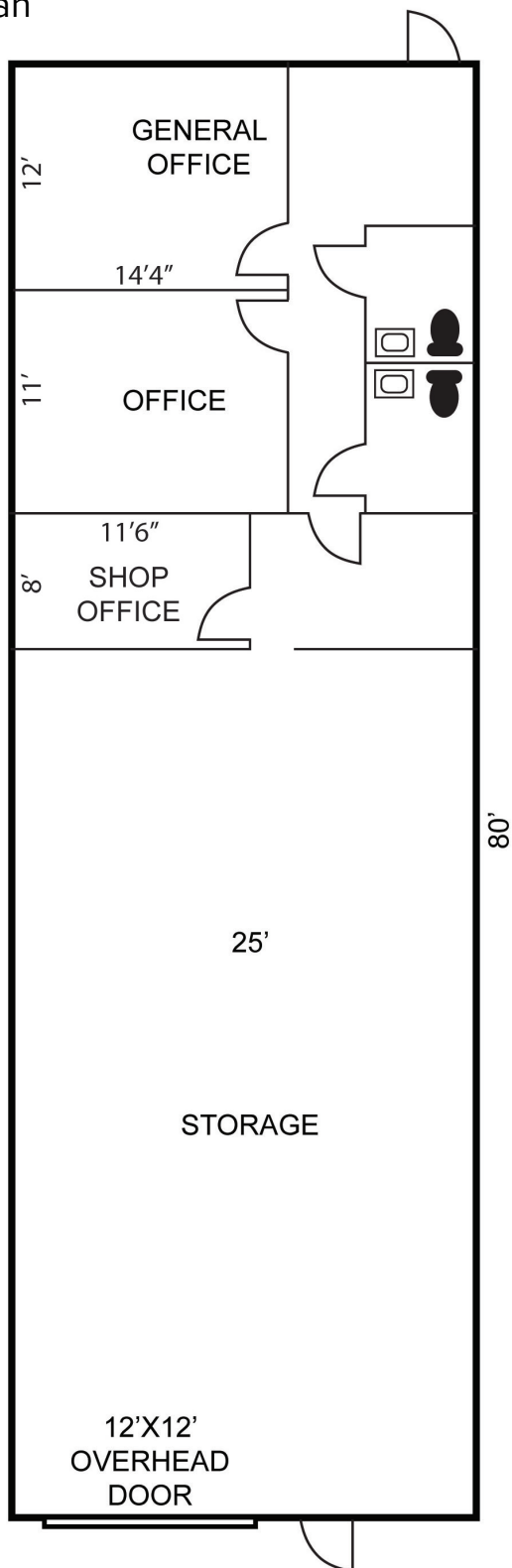
SIGNATURE ASSOCIATES
One Towne Square, Suite 1200
Southfield, MI 48076
www.signatureassociates.com

1195-1197 Rochester Road – Troy, Michigan

Industrial For Lease

1,600 – 2,000
Square Feet
AVAILABLE

Floor Plan



AVAILABILITY

SUITE	TOTAL SF & OFFICE SF	GLD/DOCKS	RATE	AVAILABLE
1195 – K	2,000/775	1/0	\$13.95 G	Immediately

For more information, please contact:

KRIS PAWLOWSKI
(248) 359 3801
kpawlowski@signatureassociates.com

PAUL HOGE
(248) 948 0103
paulhoge@signatureassociates.com

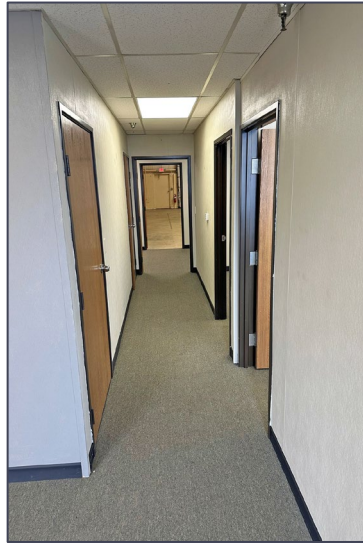
SIGNATURE ASSOCIATES
One Towne Square, Suite 1200
Southfield, MI 48076
www.signatureassociates.com

1195-1197 Rochester Road – Troy, Michigan

Industrial For Lease

1,600 – 2,000
Square Feet
AVAILABLE

Interior Photos Suite K



For more information, please contact:

KRIS PAWLOWSKI
(248) 359 3801
kpawlowski@signatureassociates.com

PAUL HOGE
(248) 948 0103
paulhoge@signatureassociates.com

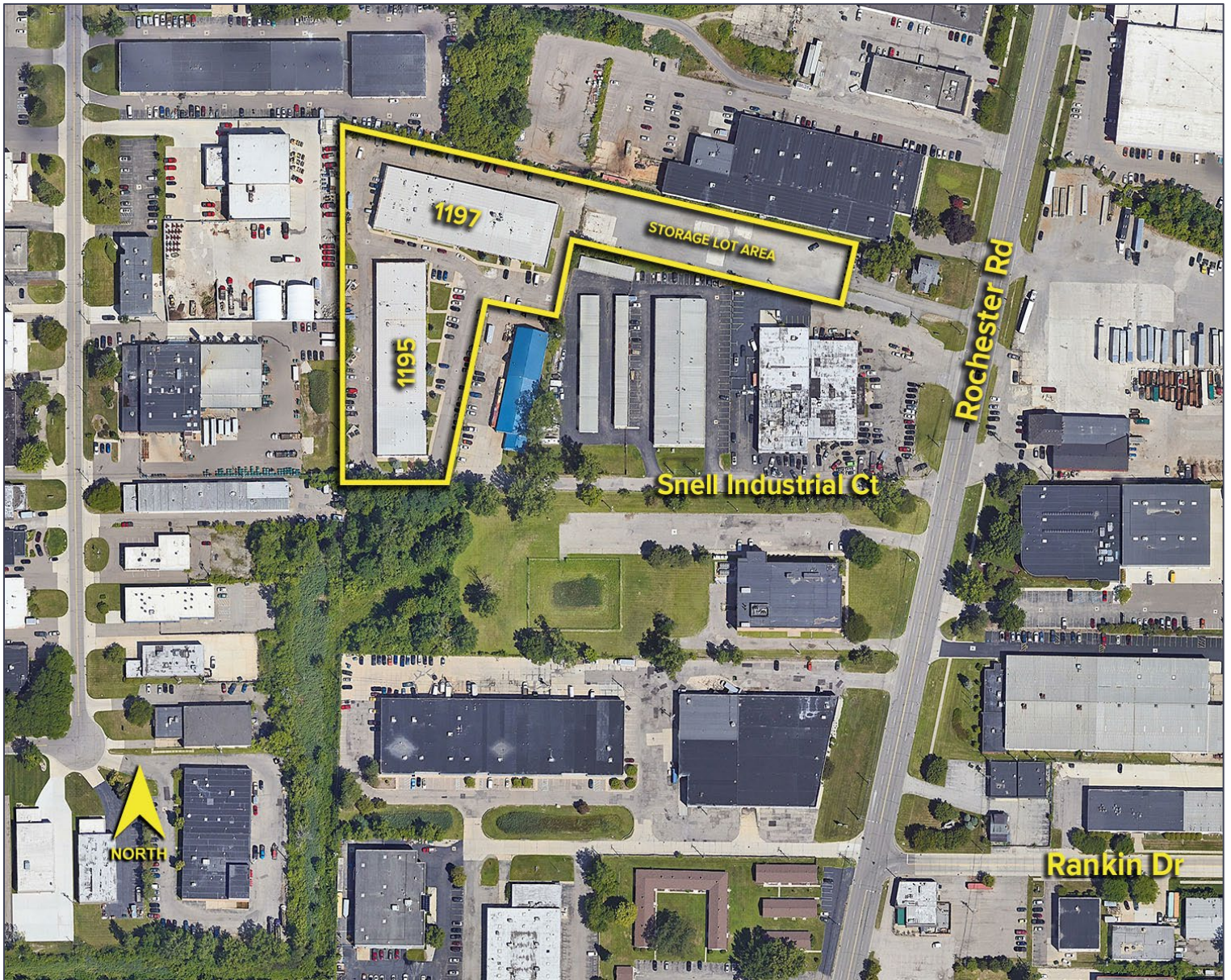
SIGNATURE ASSOCIATES
One Towne Square, Suite 1200
Southfield, MI 48076
www.signatureassociates.com

1195-1197 Rochester Road – Troy, Michigan

Industrial For Lease

1,600 – 2,000
Square Feet
AVAILABLE

Aerial



For more information, please contact:

KRIS PAWLOWSKI
(248) 359 3801
kpawlowski@signatureassociates.com

PAUL HOGE
(248) 948 0103
paulhoge@signatureassociates.com

SIGNATURE ASSOCIATES
One Towne Square, Suite 1200
Southfield, MI 48076
www.signatureassociates.com