

# 650 DAVIS

## SUBLEASE

Brand New Headquarters  
Opportunity in  
Jackson Square

2nd Floor | 45,970 RSF

## Two Suites

Water Views | 25,284 RSF

Park Views | 20,686 RSF

Can be leased together or  
separately

Term  
Flexible

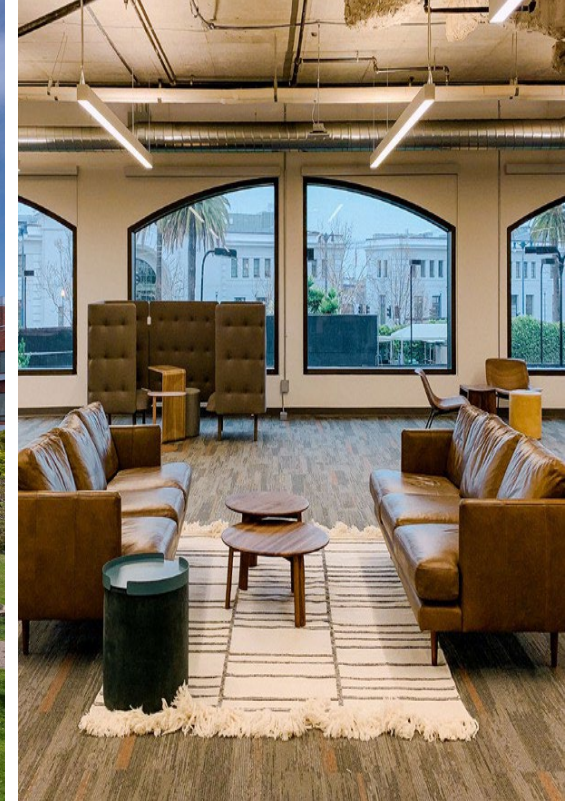


Jones Lang LaSalle Brokerage, Inc.  
Real Estate License #: 01856260



Nestled amongst San Francisco's scenic waterfront, the Financial District bustle, and vibrant Jackson Square, NorthPark is perfectly off-centered.

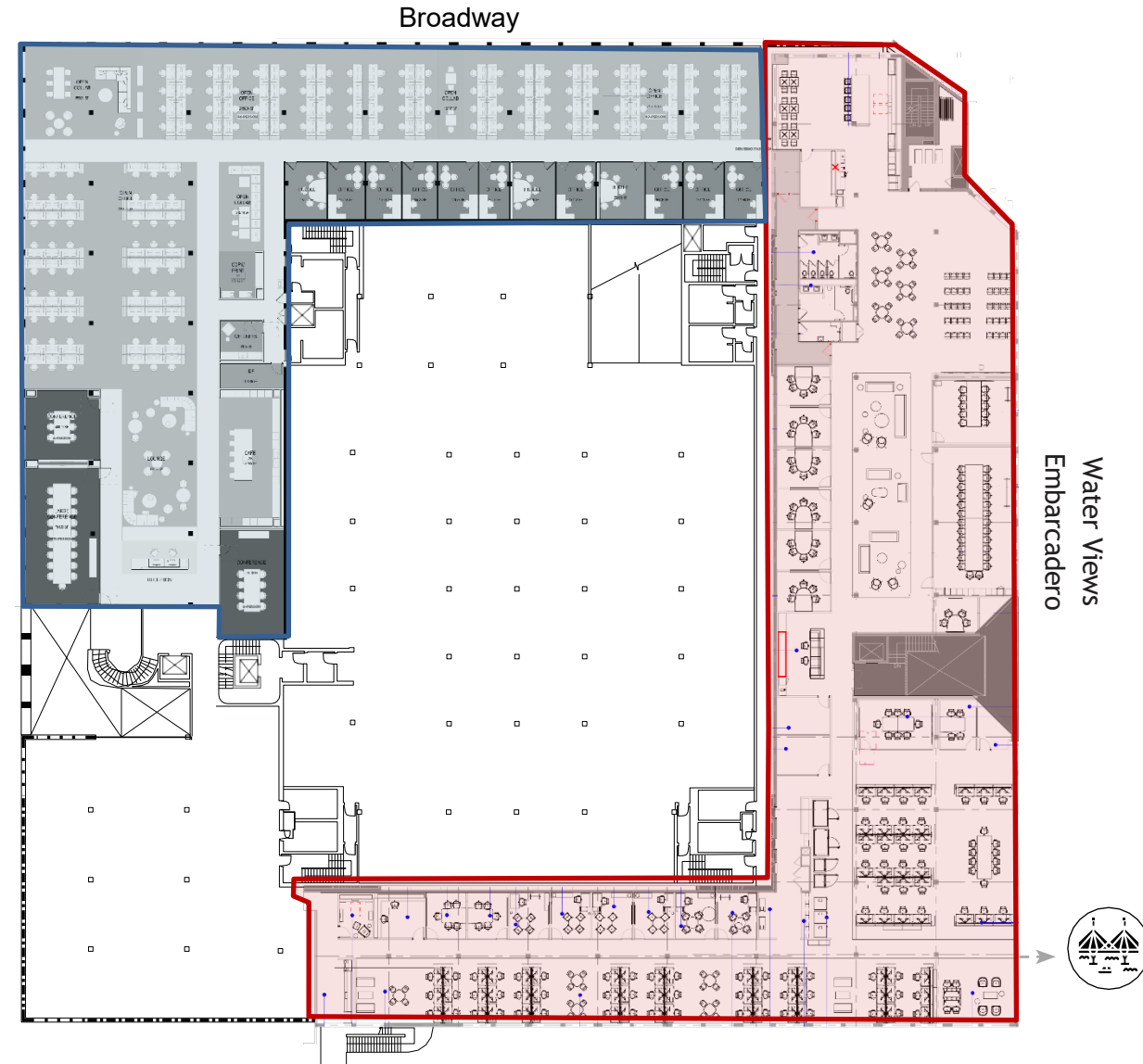
From the morning commute to lunch by the San Francisco Bay to drinks after work, it's all just a short stroll, ride or scoot away.



# suite highlights

- TERM: FLEXIBLE
- WATER & BRIDGE VIEWS: 1 EXECUTIVE BOARDROOM, 2 LARGE MEETING ROOMS, 16 SMALL MEETING ROOMS/OFFICES, CAPACITY FOR 150+ DESKS, KITCHEN/CAFÉ, LOUNGE AREA
- PARK VIEWS: EXECUTIVE BOARDROOM, 14 MEETING ROOMS/OFFICES, KITCHEN/CAFÉ, LOUNGE AREA, OPEN SPACE FOR UP TO 150 WORKSTATIONS
- FINISHES: EXPOSED CEILING, POLISHED CONCRETE FLOORS, ALL GLASS MEETING ROOMS
- GREAT NATURAL LIGHT
- LOCATION: HEART OF JACKSON SQUARE, CLOSE TO FERRY BUILDING, EMBARCADERO, BAY CLUB AND NUMEROUS HIGH-END RESTAURANTS AND CAFES
- TAKE CALLS AND WALKING MEETINGS ON THE WATER
- BUILDING LOBBY REFRESH UNDERWAY

## Combined Suites | 45,970 RSF Brand New Spec Suite with High End Finishes

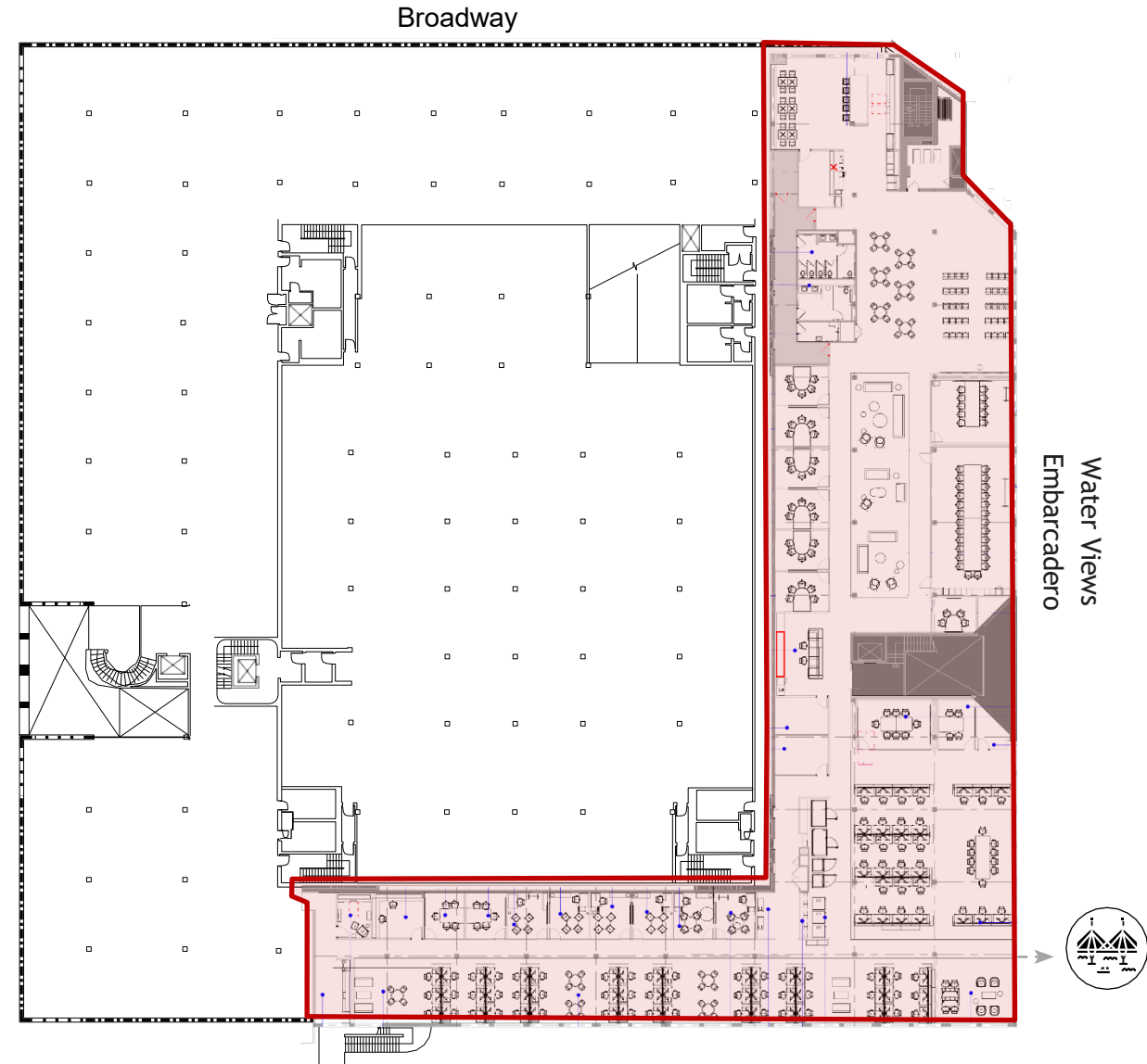


\* Furniture not included with the sublease premises.

# suite highlights

- TERM: FLEXIBLE
- LAYOUT: 1 EXECUTIVE BOARDROOM, 2 LARGE MEETING ROOMS, 16 SMALL MEETING ROOMS/OFFICES, CAPACITY FOR 150+ DESKS, KITCHEN/CAFÉ, LOUNGE AREA
- FINISHES: EXPOSED CEILING, POLISHED CONCRETE FLOORS, ALL GLASS MEETING ROOMS
- GREAT NATURAL LIGHT
- LOCATION: HEART OF JACKSON SQUARE, CLOSE TO FERRY BUILDING, EMBARCADERO, BAY CLUB AND NUMEROUS HIGH-END RESTAURANTS AND CAFES
- TAKE CALLS AND WALKING MEETINGS ON THE WATER
- BUILDING LOBBY REFRESH UNDERWAY

## Water & Bridge Views | 25,284 RSF Brand New Spec Suite with High End Finishes

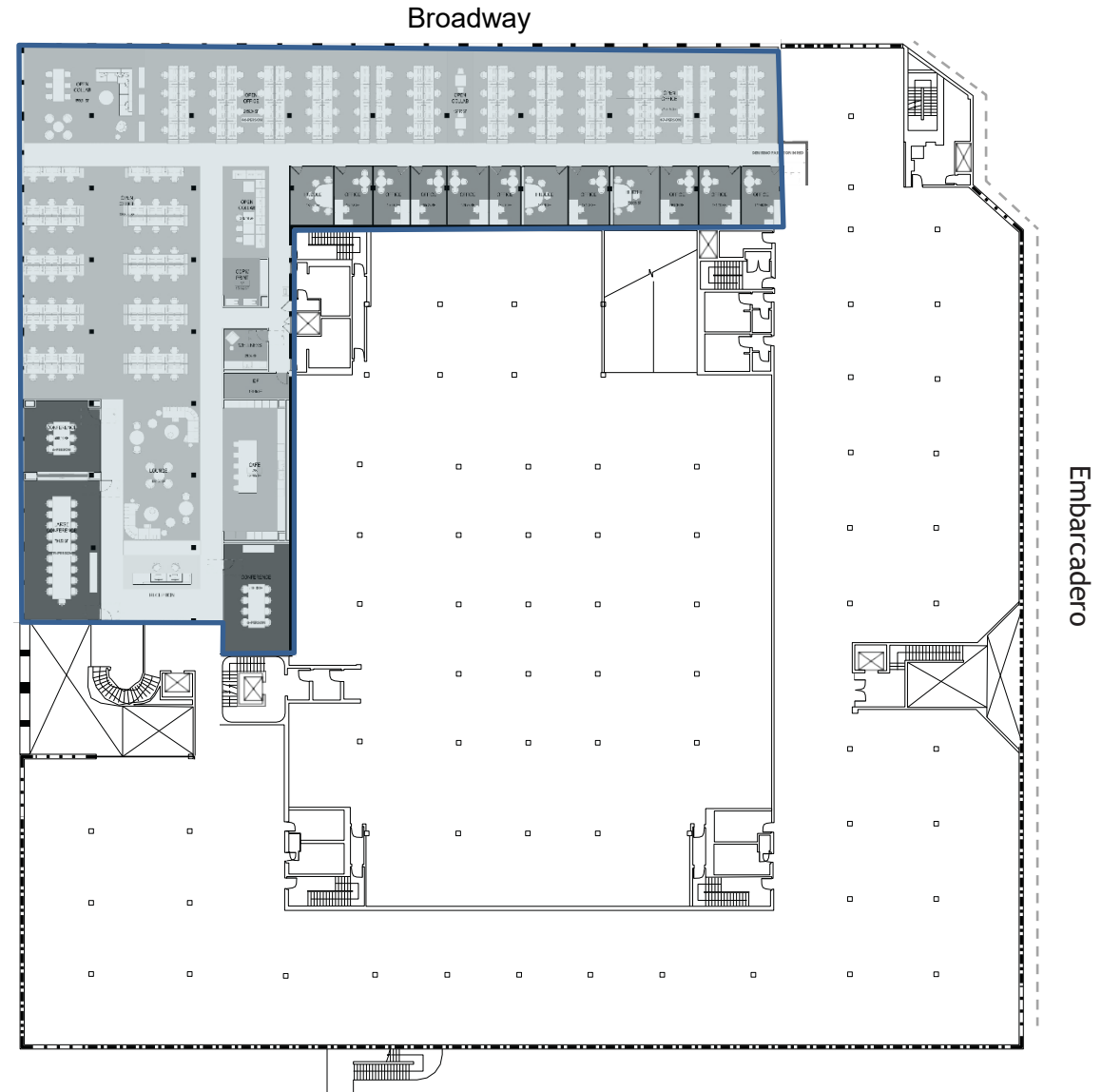


\* Furniture not included with the sublease premises.

# suite highlights

- TERM: FLEXIBLE
- LAYOUT: EXECUTIVE BOARDROOM, 14 MEETING ROOMS/OFFICES, KITCHEN/CAFÉ, LOUNGE AREA, OPEN SPACE FOR UP TO 150 WORKSTATIONS
- FINISHES: EXPOSED CEILING, POLISHED CONCRETE FLOORS, ALL GLASS MEETING ROOMS
- GREAT NATURAL LIGHT
- LOCATION: HEART OF JACKSON SQUARE, CLOSE TO FERRY BUILDING, EMBARCADERO, BAY CLUB AND NUMEROUS HIGH-END RESTAURANTS AND CAFES
- TAKE CALLS AND WALKING MEETINGS ON THE WATER
- BUILDING LOBBY REFRESH UNDERWAY

## Park Views | 20,686 RSF Brand New Spec Suite with High End Finishes

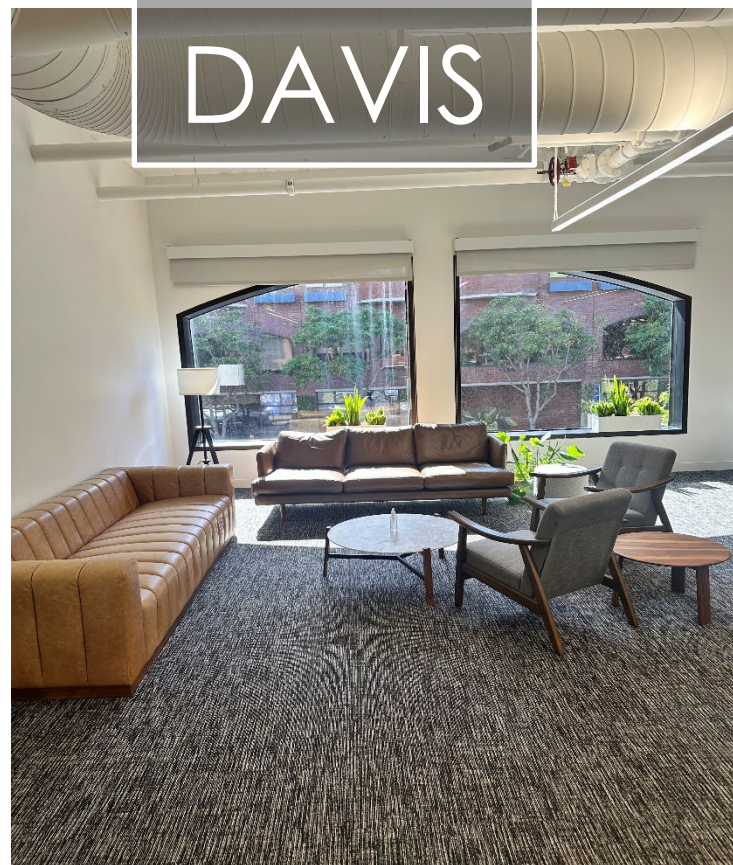


\* Furniture not included with the sublease premises.



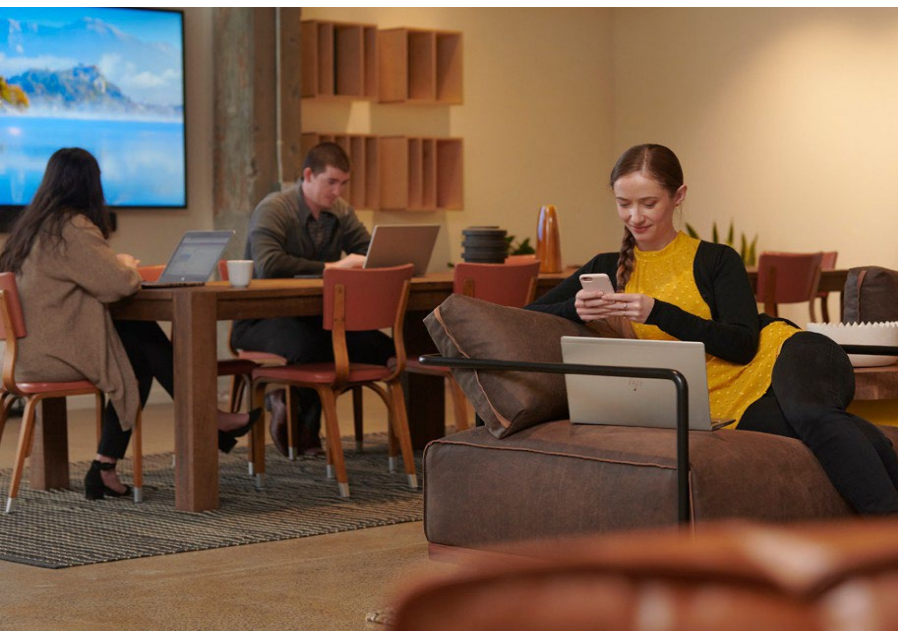
650

DAVIS





Spacious open plan interiors with scenic views of the park and San Francisco Bay. Connected to shaded walkways and outdoor meeting spaces. Because sometimes a change of scenery is just what your team needs to come together and cultivate new ideas.



# amenities

## RESTAURANTS ●

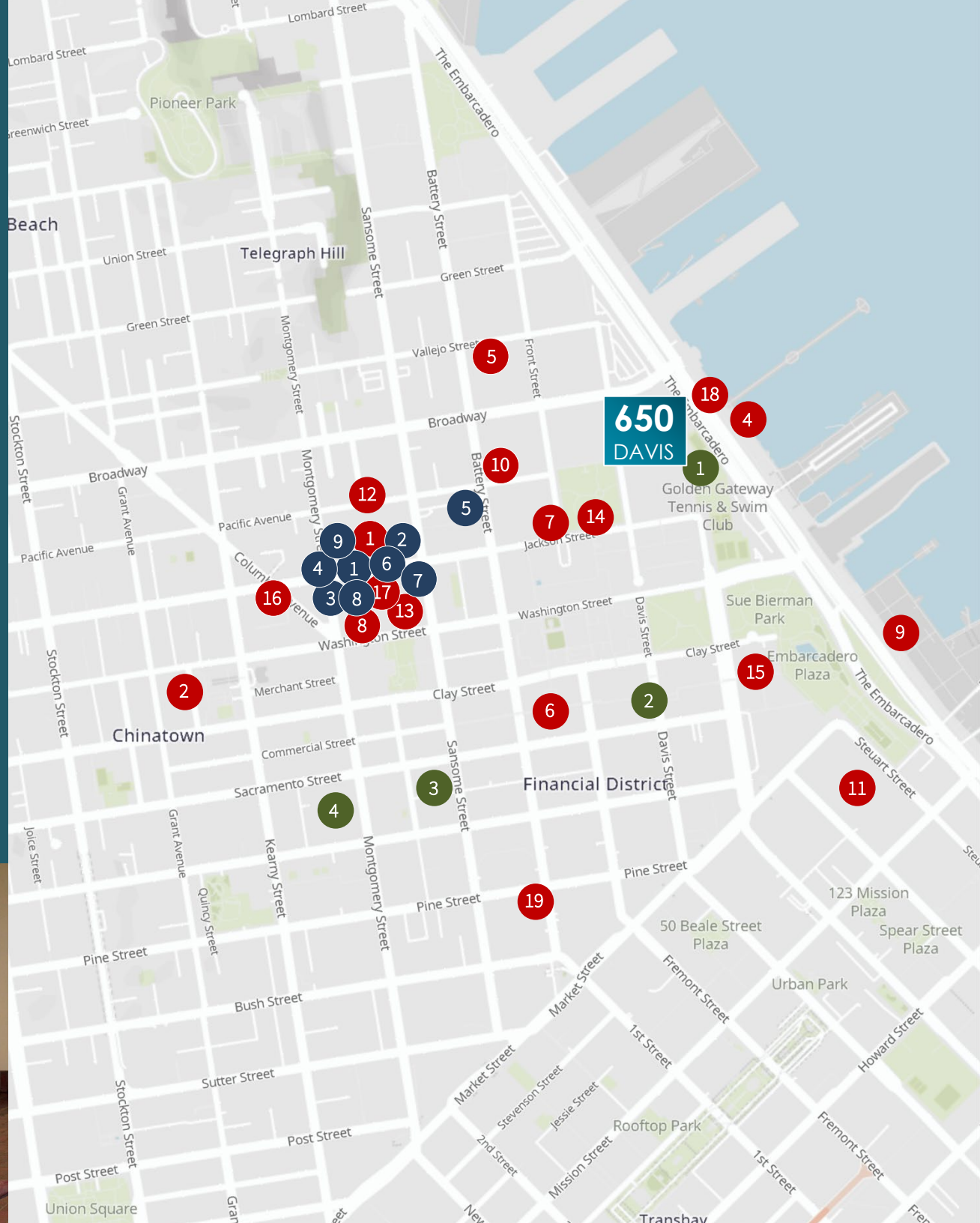
- 1 Bix
- 2 City View
- 3 Cotogna
- 4 Coquette
- 5 Grumpy's Restaurant
- 6 Harborview
- 7 Kokkari Estiatorio
- 8 Kusakabe
- 9 La Mar Cocina
- 10 The Old Ship Saloon
- 11 Osha
- 12 Quince
- 13 Roka Akor
- 14 Sens
- 15 Trestle
- 16 Verjus
- 17 The Waterfront
- 18 Wayfare Tavern

## RETAIL ●

- 1 Aesop
- 2 Annie Bing
- 3 Filson
- 4 Isabel Marant
- 5 Mei Wah
- 6 Polo Ralph Lauren
- 7 Schott NYC
- 8 Shinola
- 9 Zimmerman

## GYMS ●

- 1 Bay Club Gateway
- 2 Fitness SF
- 3 Orange Theory
- 4 Planet Fitness





**DAN JOHNSON**

Managing Director  
415 265 5216  
dan.johnson@jll.com  
RE License #01856260

**JON MOELLER**

Executive Managing Director  
415 516 2019  
jon.moeller@jll.com  
RE License #01227897



Jones Lang LaSalle Brokerage, Inc.  
Real Estate License #: 01856260