

Industrial Space For Sublease

5390
Canotek Rd

Ottawa, Ontario

LOCATED IN WELL-KNOWN INDUSTRIAL PARK IN OTTAWA'S EAST END



Prime Industrial Space for Sublease

Available Units*

Unit 2-4: 3,313 SF

Unit 14: 2,508 SF **LEASED**

Asking Net Rent

\$16.00 PSF

Additional Rent

\$8.16 PSF

Sublease Expiry

July 31, 2030 - Direct Lease is Possible

Loading

Unit 2-4: 2 docks, 1 with steel ramp

Unit 14: 1 dock

Unit Description

Unit 2-4: Small mezzanine, traditional warehouse space with heater, bathroom to be re-installed.

~~**Unit 14:** Second floor office space with 1 storage room, printing room, kitchenette and 3 large offices. The space also has ground floor warehouse with a regular dock level door with a heater.~~

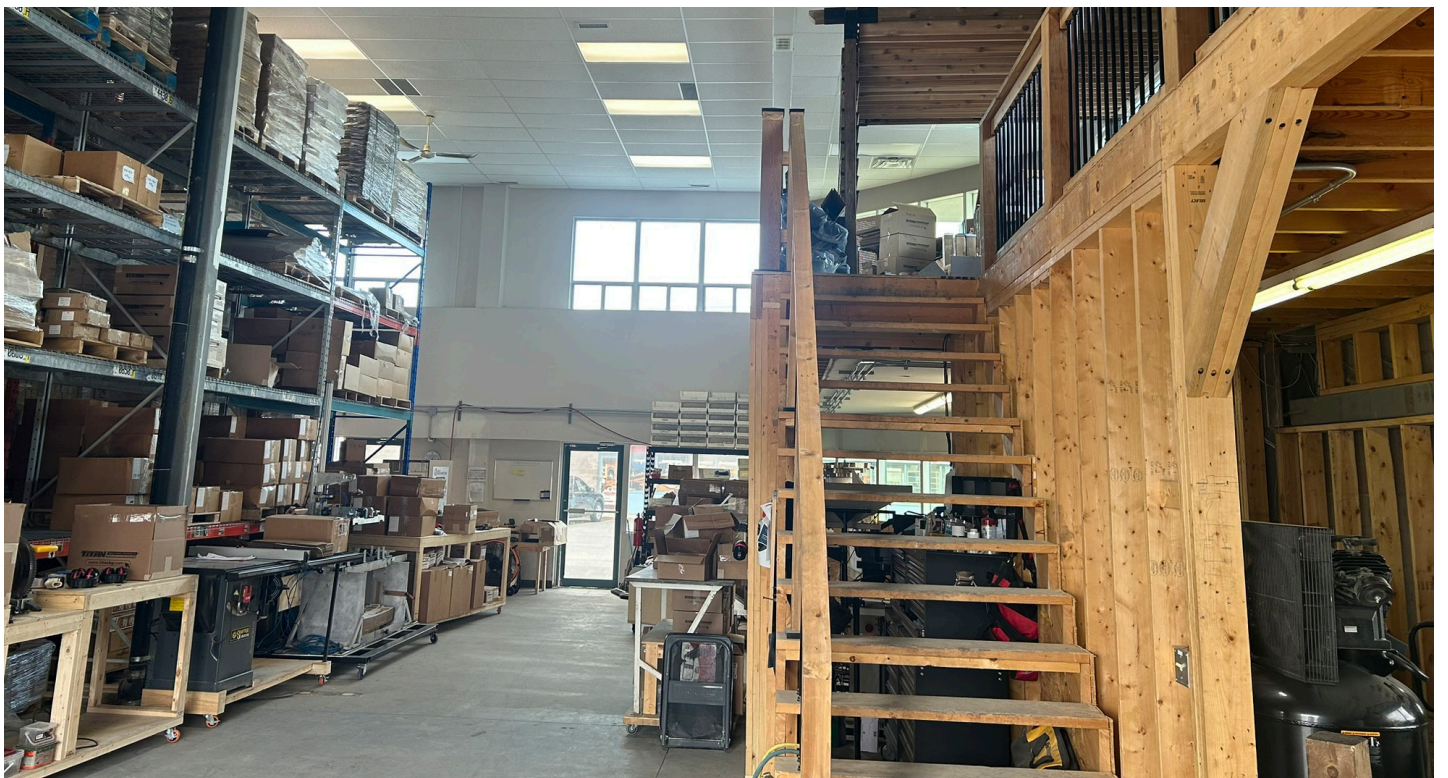
Location

- Exceptional access to Highway 174 and Montreal Road
- Convenient access to a variety of tenant amenities





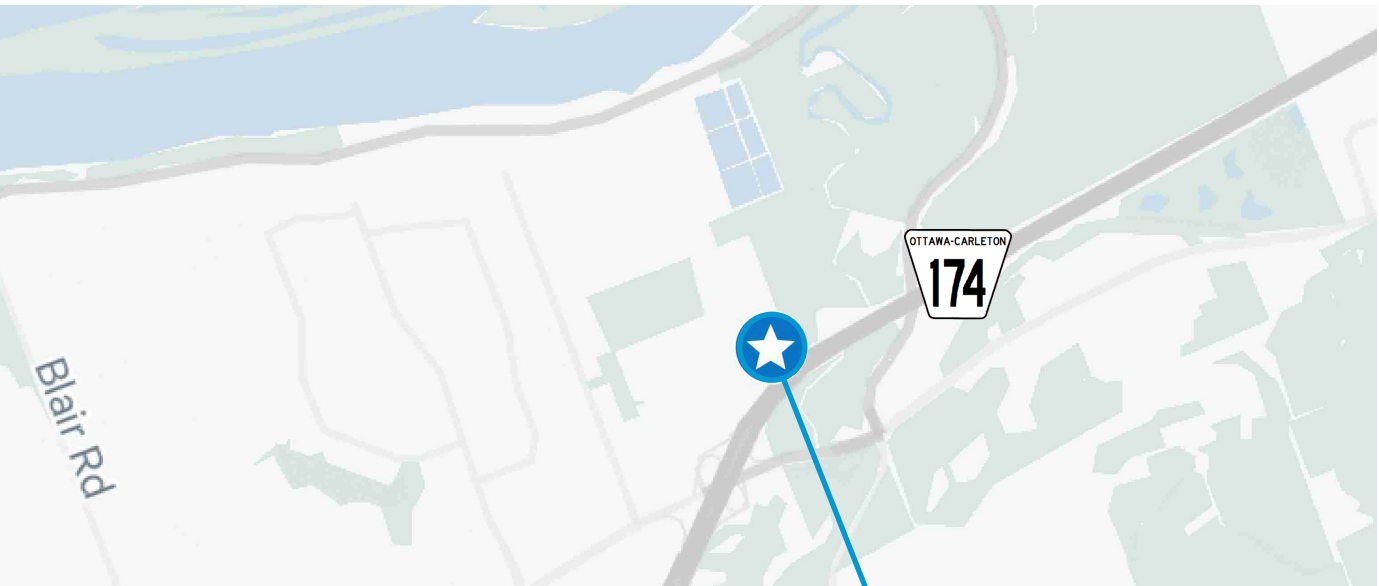
Property Photos





Property Location







For Sublease

CBRE

5390 Canotek Road

FOR MORE INFORMATION, PLEASE CONTACT:

Steve Piercey*
Senior Vice President
T: +1 613 691 2100
E: steve.piercey@cbre.com

Mike McMurtry
Sales Representative
T: +1 613 691 2135
E: michael.mcmurtry@cbre.com

**Sales Representative*

CBRE Limited | Real Estate Brokerage | 340 Albert Street, Suite 1900 | Ottawa, ON | K1R 7Y6

© CBRE Limited. All rights reserved. This information has been obtained from sources believed reliable, but has not been verified for accuracy or completeness. You should conduct a careful, independent investigation of the property and verify all information. Any reliance on this information is solely at your own risk. CBRE and the CBRE logo are service marks of CBRE Limited. All other marks displayed on this document are the property of their respective owners, and the use of such logos does not imply any affiliation with or endorsement of CBRE. Photos herein are the property of their respective owners. Use of these images without the express written consent of the owner is prohibited. Canadian Mapping Services canadamapping@cbre.com; DMTI Spatial, Environics Analytics, Microsoft Bing, Google Earth.