



RETAIL SPACE

HOWARD BEACH, NY

LINDEN CENTER

78-15 LINDEN BOULEVARD

**EXISTING BUSINESS IN PLACE -
PLEASE DO NOT APPROACH EMPLOYEES**

SIZE

12,500 SF with 2,500 SF mezzanine

ASKING RENT

Upon Request

CEILING HEIGHTS

15 FT

CO-TENANTS

LA Fitness, Woodstack, Visionworks, Gopuff, Five Below, GNC, Feel Beauty, Hook & Reel, Family Dollar, Dunkin', Dollar Tree, ABC Superstore, AutoZone, Taco Bell, AFC Urgent Care

COMMENTS

Prime Queens Retail Opportunity

Over 49,000 vehicles pass this site daily on Linden Boulevard

GLA - 200,000 SF

On site parking for 570 cars plus 60 bike parking spaces

2 pylon signs available

CONTACT EXCLUSIVE AGENT

TOM RETTALIATA

trettaliata@ripcony.com

516.933.8880

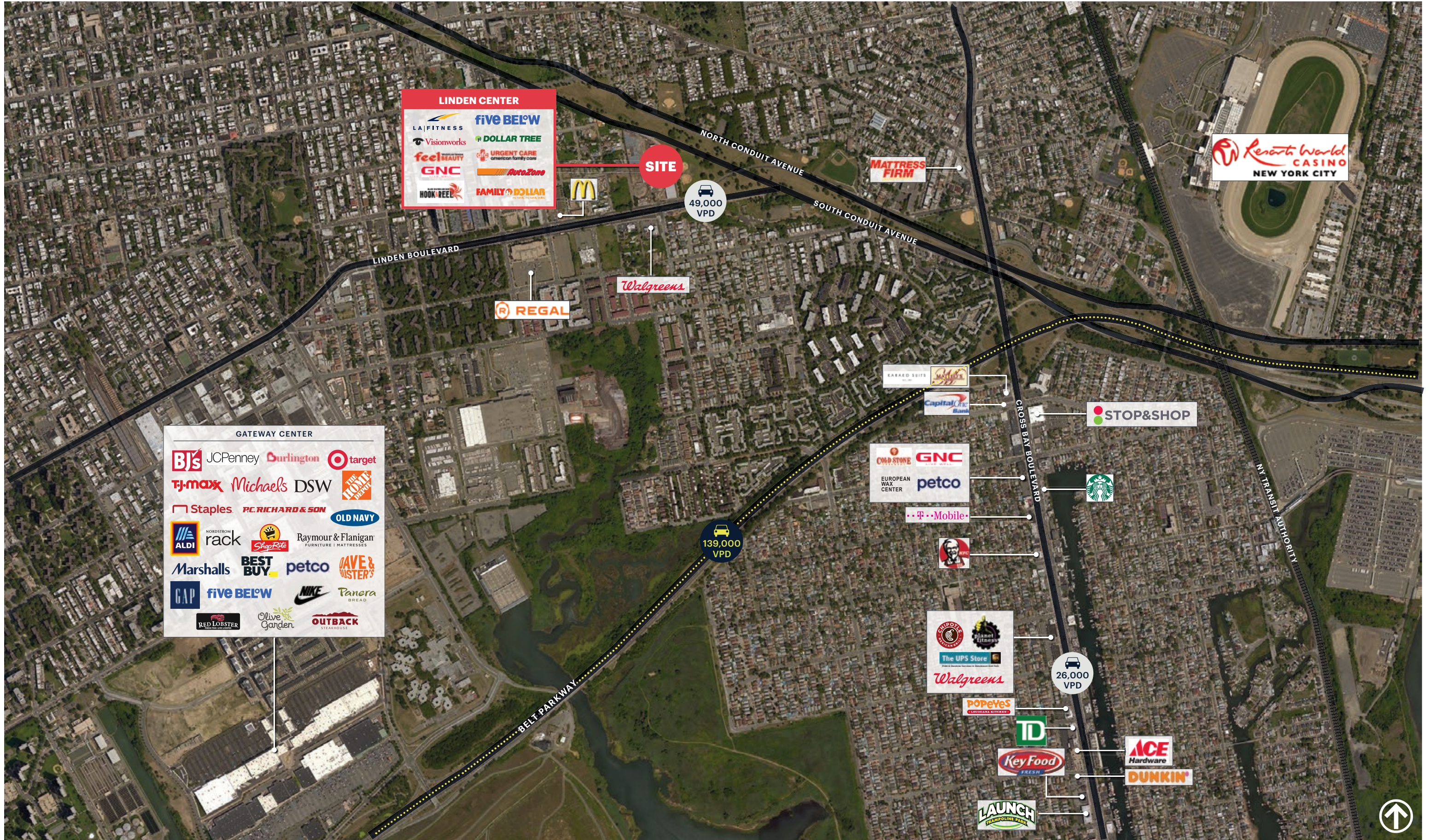
RIPCO
REAL ESTATE

1000 Woodbury Road
Suite 100
Woodbury, NY 11797
516.933.8880

Please visit us at ripcony.com for more information

This information has been secured from sources we believe to be reliable, but we make no representations as to the accuracy of the information. References to square footage are approximate. Buyer must verify the information and bears all risk for any inaccuracies.

MARKET AERIAL



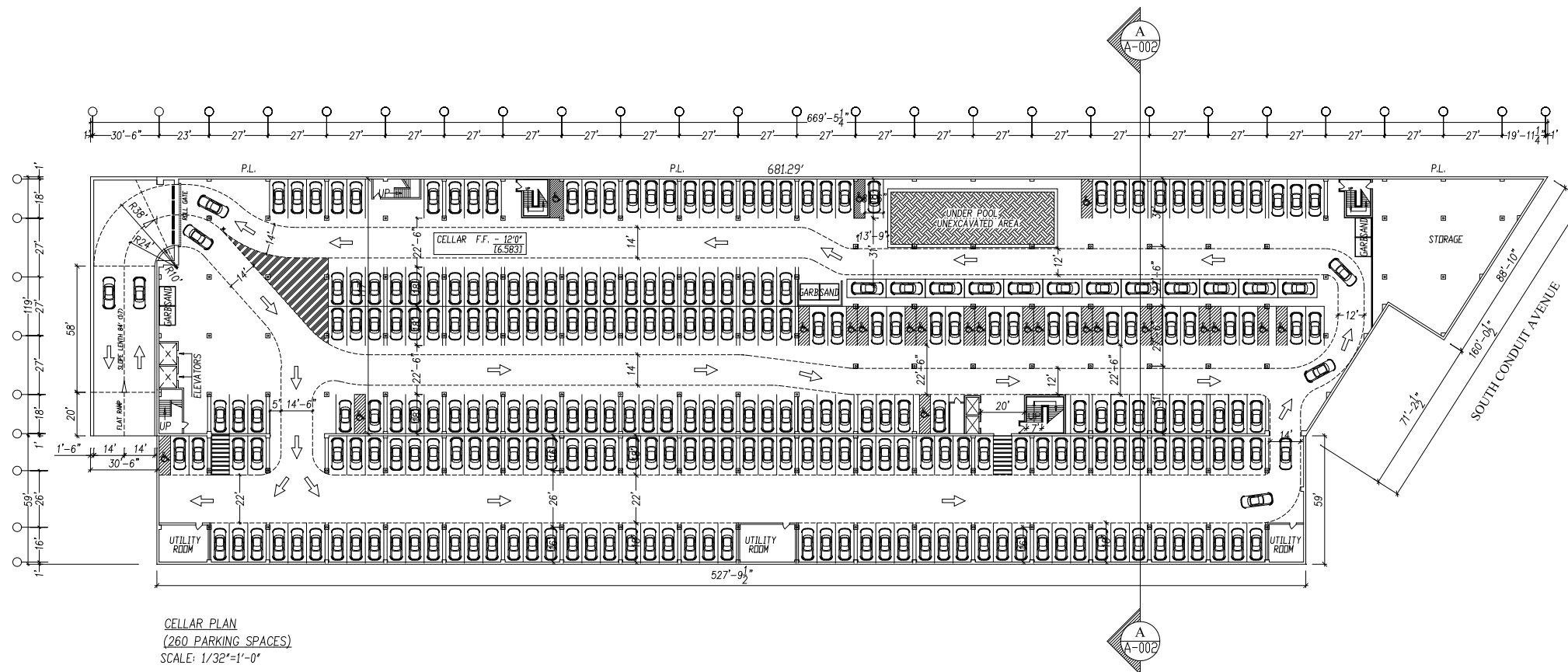
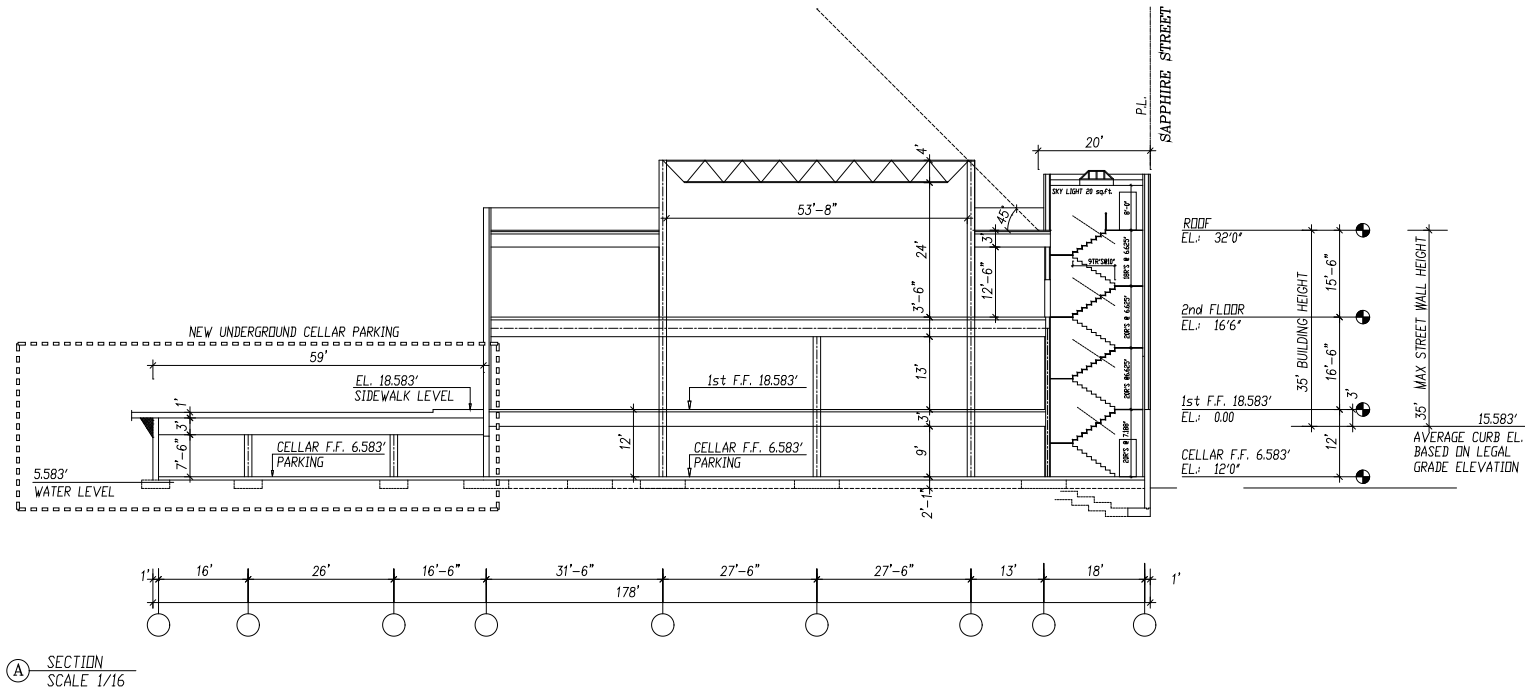
AERIAL



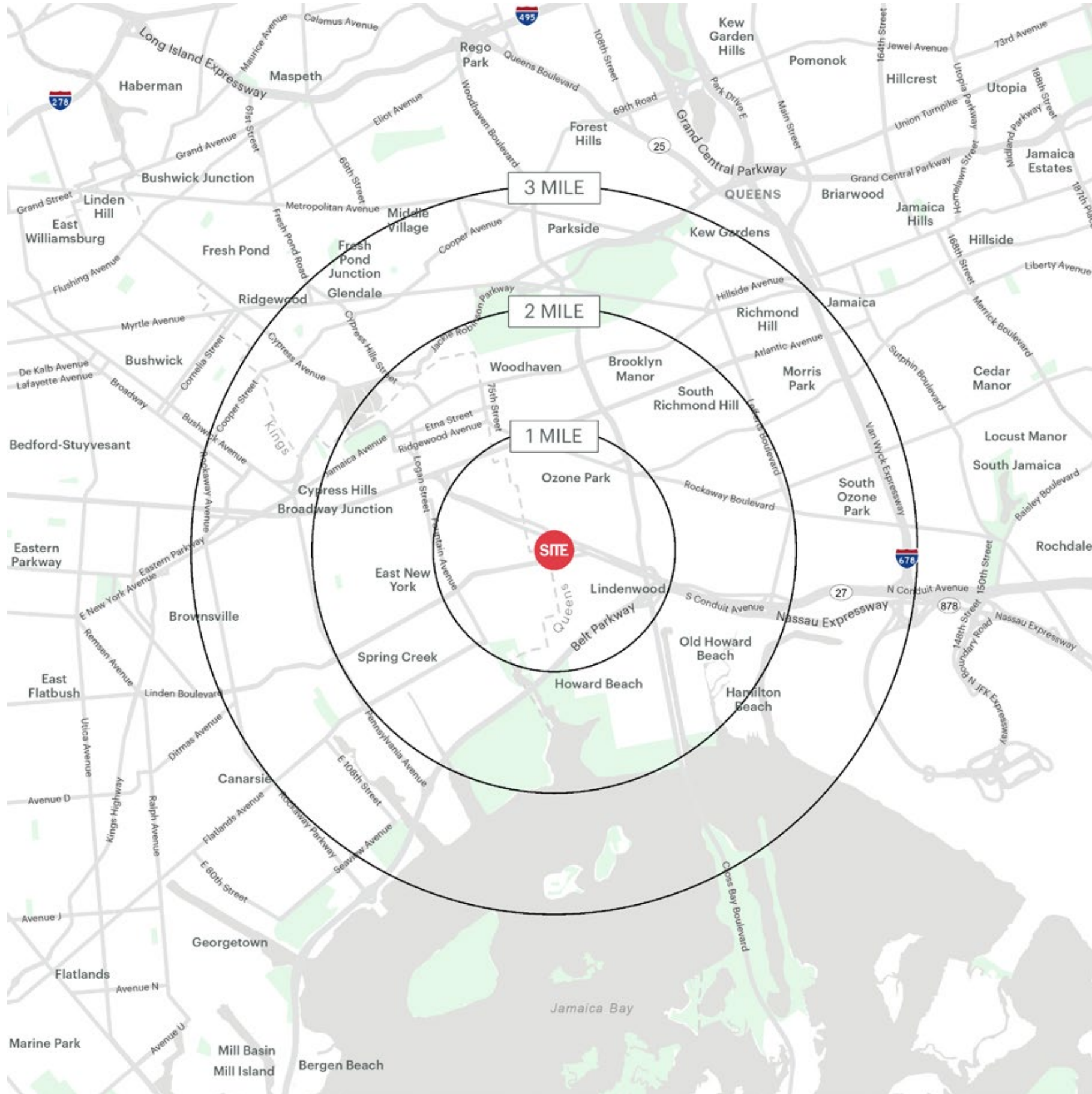
SITE PLAN



LOWER LEVEL PARKING



AREA DEMOGRAPHICS



LINDEN CENTER HOWARD BEACH, NEW YORK

1 MILE RADIUS

POPULATION
102,985
HOUSEHOLDS
33,964
AVERAGE HOUSEHOLD INCOME
\$85,016
MEDIAN HOUSEHOLD INCOME
\$56,810

COLLEGE GRADUATES (BACHELOR'S +)
16,205 - 24.0%
TOTAL BUSINESSES
1,471
TOTAL EMPLOYEES
14,867
DAYTIME POPULATION (W/ 16 YR +)
76,539

2 MILE RADIUS

POPULATION
343,452
HOUSEHOLDS
111,604
AVERAGE HOUSEHOLD INCOME
\$90,569
MEDIAN HOUSEHOLD INCOME
\$61,989

COLLEGE GRADUATES (BACHELOR'S +)
53,802 - 23.0%
TOTAL BUSINESSES
5,736
TOTAL EMPLOYEES
64,327
DAYTIME POPULATION (W/ 16 YR +)
265,956

3 MILE RADIUS

POPULATION
641,232
HOUSEHOLDS
214,650
AVERAGE HOUSEHOLD INCOME
\$90,262
MEDIAN HOUSEHOLD INCOME
\$62,288

COLLEGE GRADUATES (BACHELOR'S +)
109,767 - 25.0%
TOTAL BUSINESSES
12,081
TOTAL EMPLOYEES
145,708
DAYTIME POPULATION (W/ 16 YR +)
521,088

AREA DEMOGRAPHICS

