



222 W. Carmen Ste. 203

Santa Maria, CA



# FOR LEASE

OFFICE SUITE | ±1,045 SF

One office suite available to lease in professional office project in central Santa Maria location with elevator, ample parking, courtyard with fountain and lush landscaping.

Information contained herein has been obtained from the owner of the property or from other sources deemed reliable. We have no reason to doubt its accuracy, but we do not guarantee it.

## Contact Us

Mike Kelly, Lic #01800988  
805.928.2800 ext. 113  
Mike@PacificaCRE.com

Pat Palangi, Lic #01108680  
805.928.2800 ext. 105  
Pat@PacificaCRE.com

PacificaCommercialRealty.com

# 222 W. Carmen Ste. 203

Santa Maria, CA

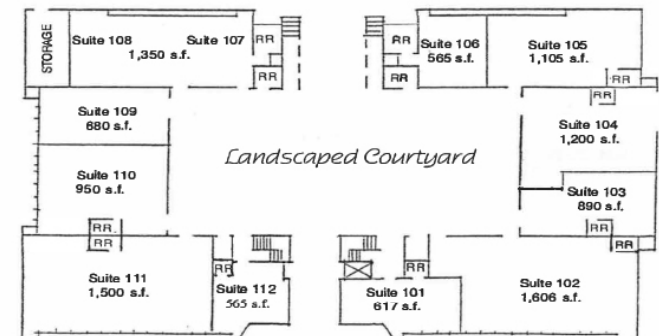
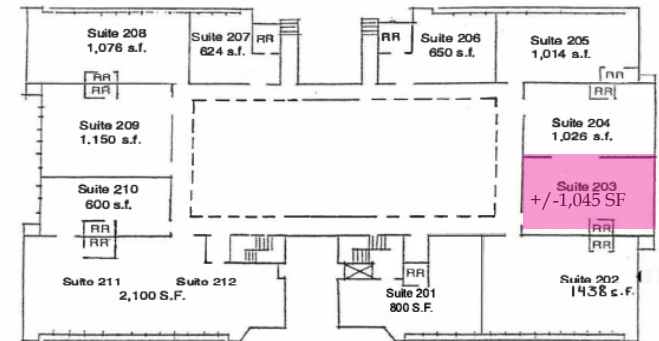
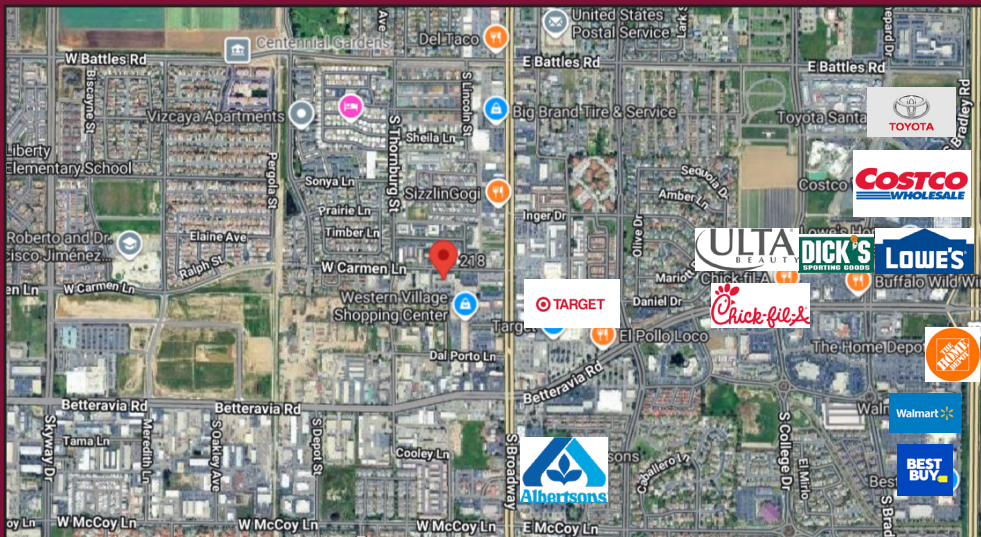


## Lease Information

- Lease Rate: \$1.25/SF
- Lease Type: NNN (\$0.55/SF)
- Lease Term: 3-5 Years
- Tenant Pays Utilities

## Building Information:

- Building Size: Approximately 25,000 SF
- Suite Size: +/-1,045 SF
- Year Built: 1982, Remodeled in 2006
- Zoning: PD C-2
- Restrooms: Private & Common
- 100% HVAC
- Parking: 144 Total Spaces (4/1,000 SF)



222 W. Carmen Ste. 203

Santa Maria, CA



## CARMEN PROFESSIONAL CENTER

- |  |   |
|--|---|
| <b>101</b> Star Drug Testing                     | <b>201</b> S.B.C. BWell Prevention      |
| <b>102</b> Good Samaritan Shelter                | <b>202</b> Good Samaritan Shelter       |
| <b>103</b> Access Central Coast                  | <b>203</b> Bomar Security               |
| <b>104</b> S.B. Co. Dept. of Behavioral Wellness | <b>204</b> Bomar Security               |
| <b>105</b> S.B. Co. Dept. of Behavioral Wellness | <b>205</b> People Creating Success      |
| <b>106</b> S.B. Co. Dept. of Behavioral Wellness | <b>206</b> Santa Maria Hospice          |
| <b>107</b> Life Steps Foundation                 | <b>207</b> Pathway Family Service, Inc. |
| <b>108</b> Life Steps Foundation                 | <b>208</b> Pathway Family Service, Inc. |
| <b>109</b>                                       | <b>209</b> Pathway Family Service, Inc. |
| <b>110</b> Emmanuel's Tax & Bookkeeping          | <b>210</b> New Heights Ventures         |
| <b>111</b> Good Samaritan Shelter                | <b>211</b> Good Samaritan Shelter       |
| <b>112</b> Thor C. Gjerdrum, MD, QME             | <b>212</b> New Heights Ventures         |

Information contained herein has been obtained from the owner of the property or from other sources deemed reliable. We have no reason to doubt its accuracy, but we do not guarantee it.