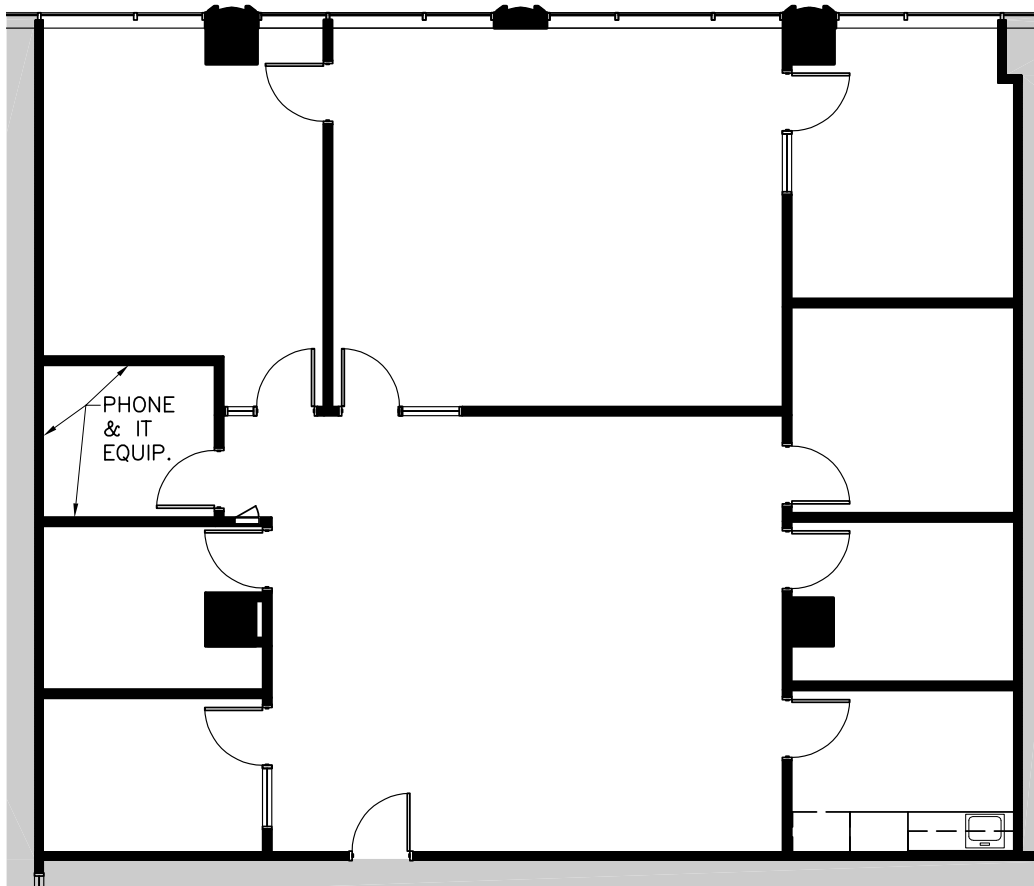
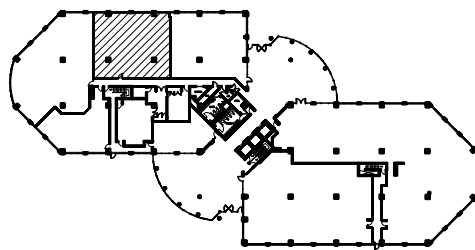


601 Oakmont Lane
Westmont, IL

SUITE 150
2,561 RSF



Key Plan:



Contact

JIM ADLER
630 691 0605
jadler@hiffman.com

DAN O'NEILL
630 691 0610
doneill@hiffman.com

COURTNEY SWEISS
630 317 0748
csweiss@hiffman.com

GROUP RMC

NAL Hiffman
Commercial Real Estate Services, Worldwide