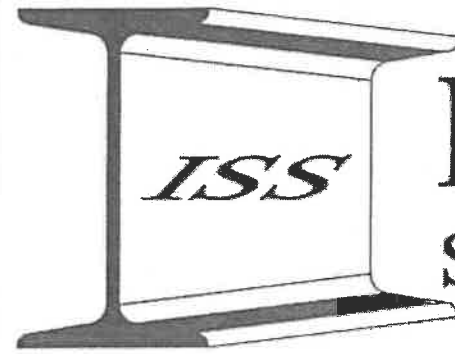


ANOTHER QUALITY METAL BUILDING PROVIDED BY



**INDEPENDENCE
STEEL SUPPLY, LLC.**

FOR

**INDEPENDENCE STEEL
116 SOLLER HEIGHTS RD.
GHENT, NY 12075**

**JOB NO. 4988
WES COON**

LOCATED AT

**N. 7775 ALBANY POST RD.
RED HOOK, NY 12571**

4/28/17



05/02/17

ERECTION NOTES:

- ALL BRACING SHOWN AND PROVIDED BY THE METAL BUILDING MANUFACTURER (M.B.M.) FOR THIS BUILDING IS REQUIRED AND SHALL BE INSTALLED BY THE ERECTOR AS A PERMANENT PART OF THE STRUCTURE.
- TEMPORARY SUPPORTS WHICH INCLUDE, BUT ARE NOT LIMITED TO, GUY LINES, BRACES, FALSEWORK, CRIBBING, AND OTHER ELEMENTS REQUIRED FOR THE ERECTION OPERATION ARE NOT DETERMINED NOR PROVIDED BY THE M.B.M.
- NORMAL ERECTION OPERATIONS INCLUDE THE CORRECTION OF MINOR MISFITS BY MODERATE AMOUNTS OF REAMING, CHIPPING, SHIMMING, CUTTING, THE DRAWING OF ELEMENTS INTO LINE THROUGH USE OF DRIFT PINS, AND THE REPLACEMENT AND/OR INSTALLATION OF MINOR SHORTAGES OF MATERIAL. ERRORS WHICH REQUIRE MAJOR CHANGES IN ANY MEMBER PROVIDED BY THE M.B.M. ARE TO BE REPORTED IMMEDIATELY TO THE M.B.M. SO THAT THE PROPER CORRECTIVE COURSE OF ACTION CAN BE DETERMINED.
- ERECTION TOLERANCES ARE SET FORTH IN THE "AISC CODE OF STANDARD PRACTICE" EXCEPT THAT INDIVIDUAL MEMBERS ARE CONSIDERED PLUMB, LEVEL AND ALIGNED IF THE DEVIATION DOES NOT EXCEED 1:300. VARIATIONS IN FINISHED OVERALL DIMENSIONS OF STRUCTURAL STEEL FRAMING ARE DEEMED WITHIN THE LIMITS OF GOOD PRACTICE WHEN THEY DO NOT EXCEED THE CUMULATIVE EFFECT OF ROLLING, FABRICATING, AND ERECTION TOLERANCES.
- WHEN CRANE SUPPORT SYSTEMS ARE PART OF THE METAL BUILDING SYSTEM, ERECTION TOLERANCES STATED IN THE "METAL BUILDING SYSTEMS MANUAL", 2002 ED., PART IV, SECTION 9 SHALL APPLY. TO ACHIEVE THE REQUIRED TOLERANCES, GROUTING OF THE COLUMNS AND SHIMMING OF THE RUNWAY BEAMS MAY BE REQUIRED. THE M.B.M. IS NOT RESPONSIBLE FOR SHIMMING, PLUMBING, LEVELING OF THE RUNWAY SYSTEM, OR FOR PROVIDING GROUT, IF REQUIRED. WHEN ALIGNING THE RUNWAY BEAMS, THE ALIGNMENT SHALL BE WITH RESPECT TO THE BEAM WEBS SO THAT THE CENTER OF THE ALIGNED RAIL IS OVER THE RUNWAY WEB.
- ALL BOLTS ARE 1/2" DIA. X 0'-1 1/4" A307 EXCEPT AS NOTED. REFER TO THE ERECTION DRAWINGS FOR SPECIFIC FRAMING CONNECTIONS AND THE CROSS-SECTION(S) FOR MAIN FRAME CONNECTIONS. ALL A307 BOLTS SHALL BE TIGHTENED TO A "SNUG-TIGHT" CONDITION, AS DEFINED IN SECTION 8.1 OF THE "SPECIFICATION FOR STRUCTURAL JOINTS USING ASTM A325 OR A490 BOLTS" DATED JUNE 30, 2004.
- ALL HIGH STRENGTH BOLTS ARE A325 UNLESS SPECIFICALLY NOTED OTHERWISE. ALL STRUCTURAL A325 BOLTS REQUIRING FULL TENSIONING, SUCH AS IN CONNECTIONS FOR THE RIGID FRAMES AND OTHER PRIMARY FRAMING, AND ALL A490 BOLTS SHALL BE INSTALLED AND TIGHTENED USING THE "TURN-OF-THE-NUT" METHOD IN ACCORDANCE WITH THE "SPECIFICATION FOR STRUCTURAL JOINTS USING ASTM A325 OR A490 BOLTS" DATED JUNE 30, 2004.
- AS A GENERAL RULE, FIELD WELDING IS NOT USED TO ASSEMBLE A METAL BUILDING SYSTEM. IN CASES WHERE THE DRAWINGS INDICATE FIELD WELDING AND IN CASES WHERE APPROVED CORRECTIONS ARE TO BE MADE BY FIELD WELDING, THE FOLLOWING REQUIREMENTS SHALL BE MET:
 - WELDERS MUST BE QUALIFIED BY AN INDEPENDENT TESTING AGENCY, WITH SUITABLE DOCUMENTATION TO AWS D1.1 STRUCTURAL CODE - STEEL OR D1.3 STRUCTURAL WELDING CODE - SHEET STEEL AS APPLICABLE, FOR THE PROCESSES, POSITIONS AND MATERIALS INVOLVED.
 - ALL WELDS MUST BE MADE IN CONFORMANCE TO A DOCUMENTED AND APPROVED WELDING PROCEDURE SPECIFICATION (WPS). ALL JOINTS WHICH ARE NOT PREQUALIFIED MUST BE SUPPORTED BY A CERTIFIED PROCEDURE QUALIFICATION RECORD (PQR) BY AN INDEPENDENT TESTING AGENCY.
 - THE TYPE OF ELECTRODES USED IN THE FIELD WELDING OF MEMBERS PROVIDED BY THE M.B.M. SHALL MEET OR EXCEED E70 STRENGTH REQUIREMENTS.

ALL DOCUMENTATION AND RECORDS SHALL NOT BE THE RESPONSIBILITY OF THE M.B.M.

- ANY CLAIMS FOR ALLEGED ERRORS, SHORTAGES, IMPERFECTIONS, OR DEFICIENCIES MUST BE MADE IN WRITING TO THE M.B.M. WITHIN THE TIME FRAME STIPULATED IN THE M.B.M.'S CONTRACT, OR SUCH CLAIMS WILL BE CONSIDERED TO HAVE BEEN WAIVED AND DISALLOWED.
- CLAIMS FOR CORRECTION OF ALLEGED MISFITS WILL BE DISALLOWED UNLESS THE M.B.M. HAS RECEIVED PRIOR NOTICE IN WRITING THEREOF AND IS ALLOWED REASONABLE INSPECTION OF SUCH MISFITS. ORDINARY INACCURACIES OF SHOP WORK SHALL NOT BE CONSTRUED AS MISFITS. NO PART OF THE BUILDING MAY BE RETURNED OR CHARGES ASSESSED FOR ALLEGED MISFITS WITHOUT PRIOR WRITTEN APPROVAL FROM THE M.B.M.
- FIELD MODIFICATION OF MATERIALS PROVIDED BY THE M.B.M. IS SPECIFICALLY DISALLOWED UNLESS SUCH MODIFICATIONS ARE AUTHORIZED IN WRITING BY THE M.B.M. WHENEVER SUCH WORK IS SPECIFIED, THE CUSTOMER IS RESPONSIBLE FOR FURNISHING COMPLETE INFORMATION AS TO MATERIALS, SIZE, LOCATION, AND NUMBER OF ALTERATIONS PRIOR TO PREPARATION OF MATERIALS TO PERFORM THE FIELD MODIFICATION.
- THE M.B.M. NOR ITS ENGINEER IS NOT RESPONSIBLE FOR ANY ASPECT OF THE ERECTION PROCESS, WHICH INCLUDES BUT IS NOT LIMITED TO, PROVIDING ERECTION SERVICES, SUPERVISING, DIRECTING, OR AUTHORIZING ERECTION ACTIVITY, OR CERTIFYING ANY OR ALL OF THE ERECTION OF THE STRUCTURE.

RESPONSIBILITIES:

- THE METAL BUILDING MANUFACTURER'S (M.B.M.) CUSTOMER, HEREAFTER REFERRED TO AS THE "CUSTOMER", OBTAINS AND PAYS FOR ALL BUILDING PERMITS, LICENSES, PUBLIC ASSESSMENTS, PAVING OR UTILITY PRO RATA, UTILITY CONNECTIONS, OCCUPANCY FEES AND OTHER FEES REQUIRED BY ANY GOVERNMENTAL AUTHORITY OR UTILITY IN CONNECTION WITH THE WORK PROVIDED FOR IN THE CONTRACT DOCUMENTS. THE CUSTOMER PROVIDES AT THEIR EXPENSE ALL DOCUMENTS REQUIRED TO OBTAIN A BUILDING PERMIT. IT IS THE CUSTOMER'S RESPONSIBILITY TO ENSURE THAT ALL DOCUMENTS COMPLY WITH THE APPLICABLE REQUIREMENTS OF ANY GOVERNING BUILDING AUTHORITIES.
- THE CUSTOMER IS RESPONSIBLE FOR IDENTIFYING ALL APPLICABLE BUILDING CODES, ZONING CODES, OR OTHER REGULATIONS APPLICABLE TO THE CONSTRUCTION PROJECT, INCLUDING THE METAL BUILDING SYSTEM.
- IT IS THE RESPONSIBILITY OF THE CUSTOMER TO INTERPRET ALL ASPECTS OF THE END USER'S REQUIREMENTS AND INCORPORATE THE APPROPRIATE REQUIREMENTS, DESIGN CRITERIA, AND DESIGN LOADS INTO THE ORDER DOCUMENTS SUBMITTED TO THE M.B.M.

GENERAL NOTES

- IT IS THE RESPONSIBILITY OF THE M.B.M., THROUGH ITS ENGINEER, TO DESIGN THE METAL BUILDING SYSTEM TO MEET THE DESIGN CRITERIA AND DESIGN LOADS INCORPORATED BY THE CUSTOMER INTO THE ORDER DOCUMENTS. THE M.B.M. IS NOT RESPONSIBLE FOR MAKING AN INDEPENDENT DETERMINATION OF ANY LOCAL CODES OR ANY OTHER REQUIREMENTS NOT PART OF THE ORDER DOCUMENTS.
- THE M.B.M. IS RESPONSIBLE ONLY FOR THE STRUCTURAL DESIGN OF THE METAL BUILDING SYSTEM THAT IT HAS DESIGNED AND MANUFACTURED. BOTH THE M.B.M. AND THE M.B.M.'S ENGINEER ARE NOT THE DESIGN PROFESSIONAL OR ENGINEER OF RECORD FOR THE CONSTRUCTION PROJECT. THE M.B.M. IS NOT RESPONSIBLE FOR EITHER THE DESIGN OF ANY MATERIALS THAT IT DOES NOT PROVIDE OR THEIR INTERFACE AND CONNECTION WITH THE METAL BUILDING SYSTEM.
- THE M.B.M.'S STANDARD SPECIFICATIONS AND COMMON PRACTICES APPLY UNLESS STIPULATED OTHERWISE IN THE CONTRACT DOCUMENTS. IT IS UNDERSTOOD BY BOTH PARTIES THAT THE CUSTOMER IS RESPONSIBLE FOR CLARIFICATIONS OF INCLUSIONS OR EXCLUSIONS FROM THE END USER'S REQUIREMENTS.
- IN THE CASE OF DISCREPANCIES BETWEEN THE M.B.M.'S STRUCTURAL STEEL PLANS AND REQUIREMENTS FOR OTHER TRADES, THE M.B.M.'S SHALL GOVERN.
- THE CUSTOMER IS RESPONSIBLE FOR OVERALL PROJECT COORDINATION. ALL INTERFACE, COMPATIBILITY AND DESIGN CONSIDERATIONS CONCERNING ANY MATERIALS NOT FURNISHED BY THE M.B.M. AND THE M.B.M.'S METAL BUILDING SYSTEM ARE TO BE CONSIDERED AND COORDINATED BY THE CUSTOMER. SPECIFIC DESIGN CRITERIA CONCERNING THIS INTERFACE BETWEEN MATERIALS MUST BE FURNISHED BEFORE RELEASE FOR FABRICATION OR THE M.B.M.'S ASSUMPTIONS WILL GOVERN.
- ANCHOR RODS, FOUNDATION RODS, AND ANCHOR BOLTS ARE NOT DESIGNED NOR FURNISHED BY THE M.B.M. THE CUSTOMER SHALL INSTALL AND SET THE ANCHOR RODS, FOUNDATION RODS, AND ANCHOR BOLTS IN ACCORDANCE WITH AN APPROVED DRAWING PROVIDED BY THE M.B.M. ANCHOR RODS, FOUNDATION RODS, AND ANCHOR BOLTS SHALL BE ACCURATELY SET TO A TOLERANCE OF +/- 1/8" IN BOTH ELEVATION AND LOCATION.
- ALL OTHER EMBEDDED ITEMS OR CONNECTION MATERIALS BETWEEN THE METAL BUILDING SYSTEM AND THE WORK OF OTHER TRADES SHALL BE LOCATED AND SET BY THE CUSTOMER IN ACCORDANCE WITH APPROVED LOCATIONS SHOWN ON APPROVED ERECTION DRAWINGS. THE INSTALLATION ACCURACY OF THESE ITEMS MUST SATISFY THE ERECTION TOLERANCE REQUIREMENTS.
- THE M.B.M. DOES NOT INVESTIGATE THE INFLUENCE OF THE METAL BUILDING SYSTEM ON EXISTING BUILDINGS OR STRUCTURES. THE M.B.M. DOES NOT EVALUATE THE ADEQUACY OF SUCH BUILDINGS AND STRUCTURES TO RESIST SNOW DRIFTS, WIND LOADS OR OTHER CONDITIONS AS A RESULT OF THE PRESENCE OF THE METAL BUILDING SYSTEM. THE M.B.M. RECOMMENDS THAT THE CUSTOMER RETAIN THE SERVICES OF A LICENSED PROFESSIONAL CIVIL OR STRUCTURAL ENGINEER TO EVALUATE THE ADEQUACY OF THE EXISTING BUILDING OR STRUCTURE.
- THE DESIGN OF GUTTERS AND DOWNSPOUTS IS A FUNCTION OF THE RAINFALL INTENSITY AND AREA TO BE DRAINED. THE DESIGN PARAMETERS UTILIZED ARE IN ACCORDANCE WITH THE 2002 METAL BUILDING SYSTEMS MANUAL. PROPER MAINTENANCE DICTATES THAT THE DRAINAGE SYSTEM BE KEPT FREE AND CLEAR OF DEBRIS AND/OR ICE AT ALL TIMES TO ENSURE PROPER FUNCTION OF THE GUTTERS AND DOWNSPOUTS. IN THOSE CASES WHERE THE OWNER/TENANT OF A PROPERTY IS UNWILLING OR UNABLE TO PROVIDE PROPER MAINTENANCE, ELIMINATION OF THE GUTTERS SHOULD BE CONSIDERED AS AN ALTERNATIVE.

DRAWING STATUS

- FOR APPROVAL: THESE DRAWINGS, BEING FOR APPROVAL, ARE BY DEFINITION NOT FINAL, AND ARE FOR CONCEPTUAL USES ONLY. THEIR PURPOSE IS TO CONFIRM PROPER INTERPRETATION OF THE PROJECT DOCUMENTS. ONLY DRAWINGS ISSUED "FOR CONSTRUCTION" CAN BE CONSIDERED AS COMPLETE.
- FOR PERMIT: THESE DRAWINGS, BEING FOR PERMIT, ARE BY DEFINITION NOT FINAL. IN THAT, AS A MINIMUM, PIECE MARKINGS MAY NOT BE IDENTIFIED. ONLY DRAWINGS ISSUED "FOR CONSTRUCTION" CAN BE CONSIDERED AS COMPLETE.
- FOR CONSTRUCTION: (UNLESS NOTED OTHERWISE) FINAL DRAWINGS

ERECTOR NOTE:

PLEASE REFER TO THE 'METAL BUILDING CONSTRUCTION GUIDE' BOOKLET FOR REQUIRED GENERAL METAL BUILDING ERECTION DETAILS AND INSTRUCTIONS. PLEASE ALSO REFER TO, IF PRESENT, THE 'DETAIL DRAWINGS' SECTION OF THIS DRAWING PACKAGE FOR ADDITIONAL REQUIRED NOTES AND ERECTION DETAILS.

DRAWING INDEX

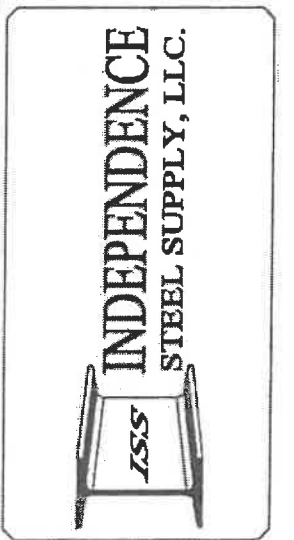
PAGE	DESCRIPTION
C1	GENERAL DRAWING NOTES
C2-C4	ERECTION & FIELD WORK NOTES
C5	BLDG. LOAD DATA
A1	ANCHOR BOLT PLAN
A2	ANCHOR BOLT DETAILS
A3	ANCHOR BOLT REACTIONS
B1	BOLT COUNT
E1 E2	RIGID FRAME SECTION
---	CRANE PLAN
E3 E4	ROOF FRAMING PLAN
---	ROOF COLLECTOR SYSTEM
---	CANOPY FRAMING/SHT'G
---	SOFFIT FRAMING/SHT'G
---	MEZZANINE FRAMING
E5-E7	SIDEWALL FRAMING/SHT'G
E8 E9	ENDWALL FRAMING/SHT'G
---	MANSARD FRAMING/SHT'G
---	PARTITION WALL FRAMING/SHT'G
---	LINER SHT'G
D1-D12	DETAIL DRAWINGS

THIS ENGINEERING SEAL APPLIES ONLY TO THE STRUCTURAL DESIGN OF PROPERLY INSTALLED MATERIALS THAT ARE FABRICATED AND DESIGNED BY THE METAL BUILDING MANUFACTURER (M.B.M.). ANY MATERIAL NOT DESIGNED OR NOT FABRICATED BY THE M.B.M. IS SPECIFICALLY EXCLUDED. THE LICENSED PROFESSIONAL ENGINEER WHOSE SEAL APPEARS ON THESE DRAWINGS IS EMPLOYED BY THE M.B.M., AND IS NOT THE ENGINEER OF RECORD FOR THIS PROJECT.

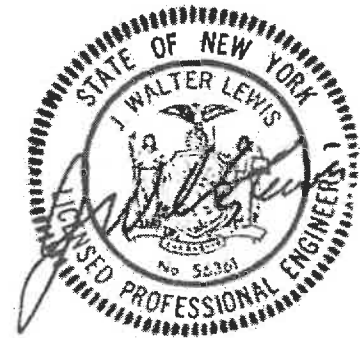
REV. NO.	BY	DATE
1		

CUSTOMER:
 INDEPENDENCE STEEL
 116 SOLLER HEIGHTS RD.
 CHEMUNY, NY 12075
PROJECT/SITE INFO:
 WES COON
 N. 7775 ALBANY POST RD.
 RED HOOK, NY 12571

DESIGNED BY: PJH
DRAWN BY: XJM **DATE:** 4/28/17
DWG CHK BY: DW3 **DATE:** ---
SCALE: NOT TO SCALE
FILE ID: 4988



SHEET NUMBER: C1 OF 5
JOB NUMBER: 4988



05/02/17

FOR CONSTRUCTION

The metal building manufacturer recognizes the procedures and standards in the Low Rise Systems Manual, published by the Metal Building Manufacturers Association regarding erection and other field work.

TIGHTENING PROCEDURES

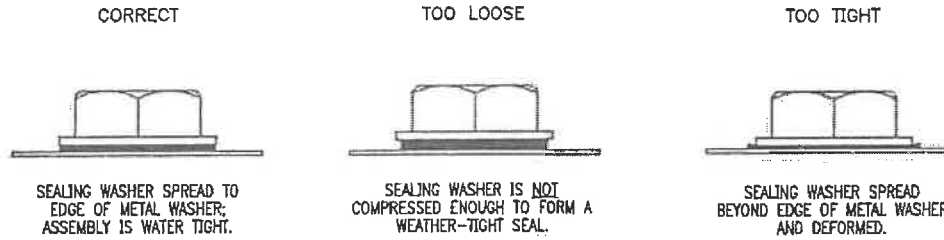
- 1.) Turn of the nut tightening
- 2.) See specification for structural joints using ASTM A325 or A-190 bolt "Manual of Steel Construction", AISC, 8th edition

Turn of the nut tightening: The turn of the nut method is used to provide the bolt tension required. There must be enough bolts brought to a "snug tight" condition to insure that the connection plates are brought into good contact with each other. "Snug tight" is defined as the tightness attained by a few impacts of an impact wrench or the full effort of a man using an ordinary spud wrench. Following this initial operation, bolts shall be placed in any remaining holes in the connection and brought to snug tightness. All bolts in the joint shall then be tightened. Additionally, turning the nut a minimum of 1/3 of a turn or 120 degrees, with tightening processing systematically from the most rigid part of the joint to its free edges. During this operation there shall be no rotation of this part not turned by the wrench.

SEATING A SCREW WITH WASHER

THE SCREW GUN SHOULD BE EQUIPPED WITH EITHER A DEPTH LOCATING NOSEPIECE OF A TORQUE ADJUSTABLE CLUTCH TO PREVENT OVERDRIVING OR STRIPOUT. DO NOT USE IMPACT TOOLS OR NUT RUNNERS.

APPLY SUFFICIENT TORQUE TO SEAT THE WASHER; DO NOT OVERDRIVE THE FASTENER.



Wall and Roof Panels

Wall and roof panels including color coated, galvalume and galvanized, provide excellent service under widely varied conditions. All unloading and erection personnel should fully understand that panels are quality merchandise which merit cautious care in handling.

Under no circumstances should steel building panels be handled roughly. Packages of sheets should be lifted off the truck with extreme care taken to insure that no damage occurs to ends of the sheets or to the side ribs. The packages should be stored off the ground sufficiently high to allow air circulation underneath the packages. This avoids ground moisture and deters people from walking on the packages. One end of the package should always be elevated to encourage drainage in case of rain.

All stacked metal panels are subject, to some degree, to localized discoloration of stain when water is trapped between their closely nested surfaces. The manufacture exercises extreme caution during fabricating and shipping operations to insure that all panel stock is kept dry. However, due to climatic conditions, water formed by condensation of humid air can become trapped between stacked sheets. Water can also be trapped between the stacked sheets when exposed to rain. This discoloration caused by trapped moisture is often called wet storage stain.

The stain is usually superficial and has little effect on the appearance or service life of the panels as long as it is not permitted to remain on the panels. However, moisture in contact with the surface of the panels over an extended period can severely attack the finish and reduce the effective service life. Therefore, it is imperative that all panels be inspected for moisture upon receipt of the order. If moisture is present, dry the panels at once and store in a dry, warm place.

CAUTION: Care should always be taken when walking on panels. Use safety lines and nets when necessary! Panels are slippery. Oil or wax applied to the roof and wall panels for protection against weather damage will make them a very slippery surface. Wipe dry any oil that has puddled from bundles stored on a slope. Dew, frost, or other forms of moisture greatly increases the slipperiness of the panels. Always assume panel surface is slippery and act accordingly. Think Safety!!

Use wood blocking to elevate and slope the panels in a manner that will allow moisture to drain. Wood blocking placed between bundles will provide additional air circulation. Cover the stacked bundles with a tarp or plastic cover leaving enough opening at the bottom for air to circulate.

AIR CIRCULATIONS: When handling or uncreating the panels, lift, rather than slide, them apart. Burred edges may scratch the coated surfaces when sheets are slid over one another. Never allow panels to be walked on while on the ground.

Note: Use gloves when handling metal panels to prevent hand injuries. Be aware, of the dangers of handling panels on a windy day. A large panel can catch enough wind to knock a worker off his feet, even at ground level. Safety first!
Note: Oil canning of panels is not a cause of rejection.

UNLOADING, HANDING AND STORING OF STRUCTURAL MATERIALS

Inspect all shipments prior to releasing the tie-downs for loads that may have shifted during transit.

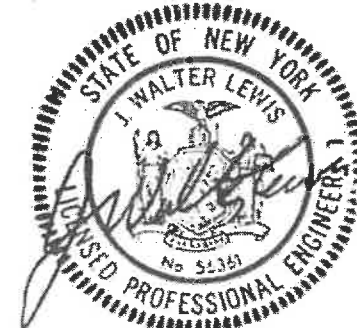
Blocking under the columns and rafters protects the splice plates and the slab from damage during the unloading process. It also facilitates the placing of slings or cables around the members for later lifting and allows members to be bolted together into sub-assemblies while on the ground. Extra care should always be exercised in the unloading operations to prevent injuries from handling the steel and to prevent damage to materials and the concrete slabs.

If water is allowed to remain for extended periods in bundles of primed parts such as girts, purlins etc., the pigment will fade and the paint will gradually soften, reducing the bond to the steel. Therefore, upon receipt of a job, all bundles of primed parts should be elevated and sloped to allow any trapped water to drain away and permit air circulation for drying. Puddles of water should not be allowed to collect and remain on columns or rafters for the same reason.

All primer should be touched up as required before erection!

Note: Long panels may be difficult to handle by lifting from beneath. Always spread the forks as wide as possible to prevent the panels from bending. Even with the forks as wide as possible, it may still be necessary to lift certain loads with a crane and spreader bar to avoid damaging the material.

FOR CONSTRUCTION
ERECTION AND OTHER
FIELD WORK NOTES



05/02/17

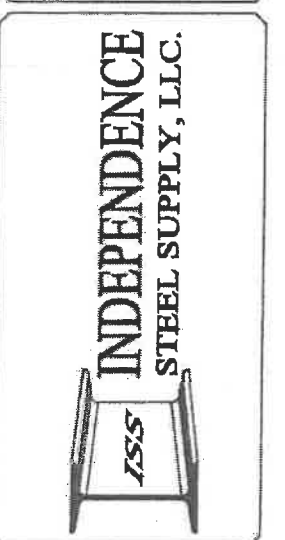
THIS ENGINEERING SEAL APPLIES ONLY TO THE STRUCTURAL DESIGN OF PROPERLY INSTALLED MATERIALS THAT ARE FABRICATED AND DESIGNED BY THE METAL BUILDING MANUFACTURER (M.B.M.). ANY MATERIAL NOT DESIGNED OR NOT FABRICATED BY THE M.B.M. IS SPECIFICALLY EXCLUDED. THE LICENSED PROFESSIONAL ENGINEER WHOSE SEAL APPEARS ON THESE DRAWINGS IS EMPLOYED BY THE M.B.M., AND IS NOT THE ENGINEER OF RECORD FOR THIS PROJECT.

DESCRIPTION	REV. NO.	BY	DATE
	1		
	2		
	3		
	4		
	5		
	6		
	7		
	8		
	9		
	10		

CUSTOMER:
 INDEPENDENCE STEEL
 116 SOLLER HEIGHTS RD.
 CHEST. NY 12075

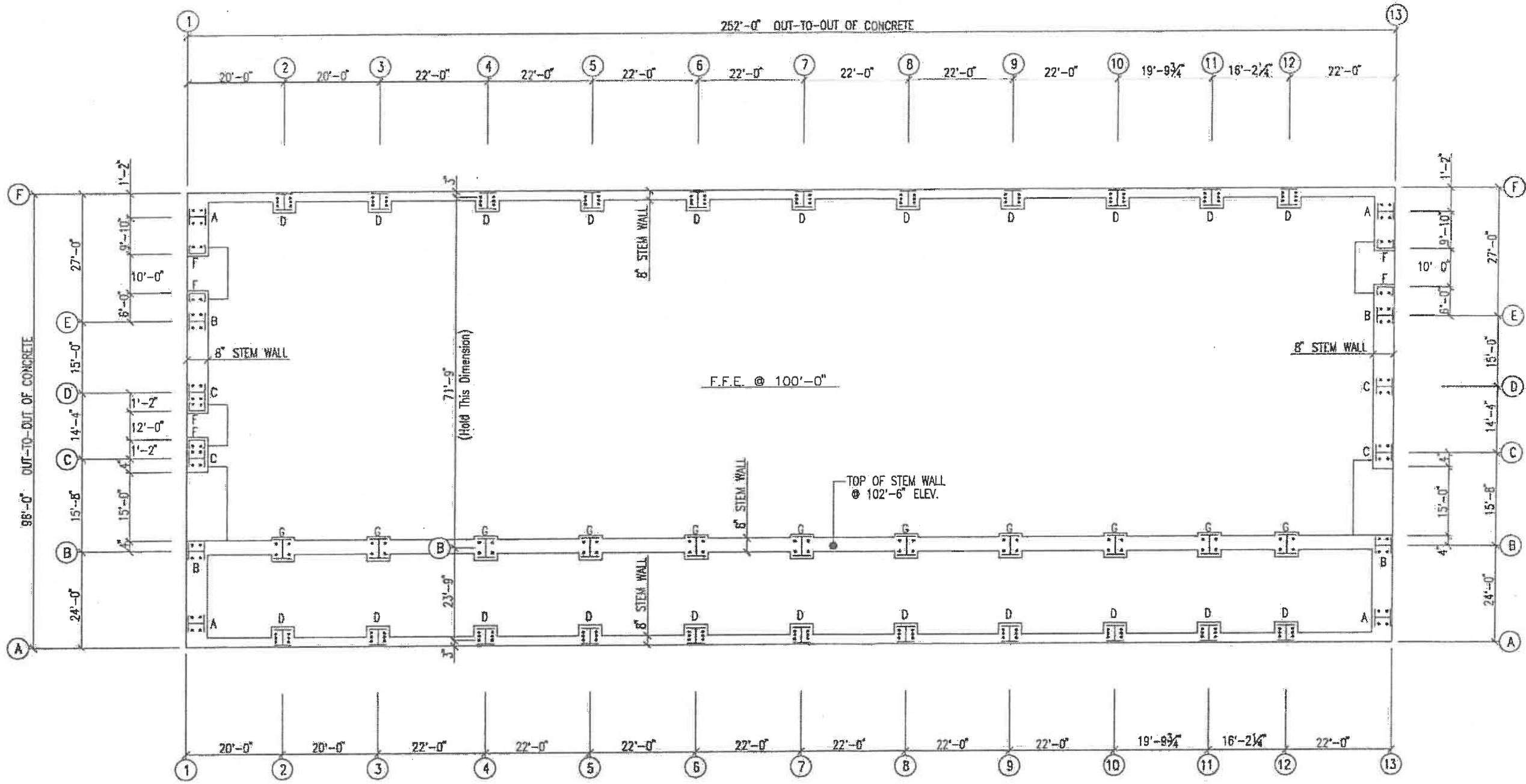
PROJECT/SITE INFO:
 WES COON
 N. 7775 ALBANY POST RD.
 RED HOOK, NY 12571

DESIGNED BY	
---	---
DRAWN BY	DATE
KJM	4/28/17
DWG. CHK BY	DATE
---	---
SCALE: NOT TO SCALE	
FILE ID: 4988	



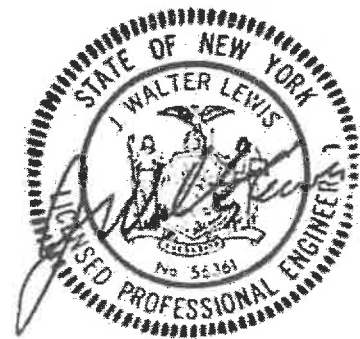
SHEET NUMBER
C4 OF 5
JOB NUMBER
4988

4988_C4_NOTES--3 2.0664



FOR CONSTRUCTION

ANCHOR BOLT PLAN
 NOTE: All Base Plates @ 102'-6" (U.N.)



05/02/17

THIS ENGINEERING SEAL APPLIES ONLY TO THE STRUCTURAL DESIGN OF PROPERLY INSTALLED MATERIALS THAT ARE FABRICATED AND DESIGNED BY THE METAL BUILDING MANUFACTURER (M.B.M.). ANY MATERIAL NOT DESIGNED OR NOT FABRICATED BY THE M.B.M. IS SPECIFICALLY EXCLUDED. THE LICENSED PROFESSIONAL ENGINEER WHOSE SEAL APPEARS ON THESE DRAWINGS IS EMPLOYED BY THE M.B.M. AND IS NOT THE ENGINEER OF RECORD FOR THIS PROJECT.

REV. NO.	BY	DATE
<<<	<<<	<<<
<<<	<<<	<<<
<<<	<<<	<<<
<<<	<<<	<<<
<<<	<<<	<<<

CUSTOMER:
 INDEPENDENCE STEEL
 116 SOLLER HEIGHTS RD.
 GHENT, NY 12075

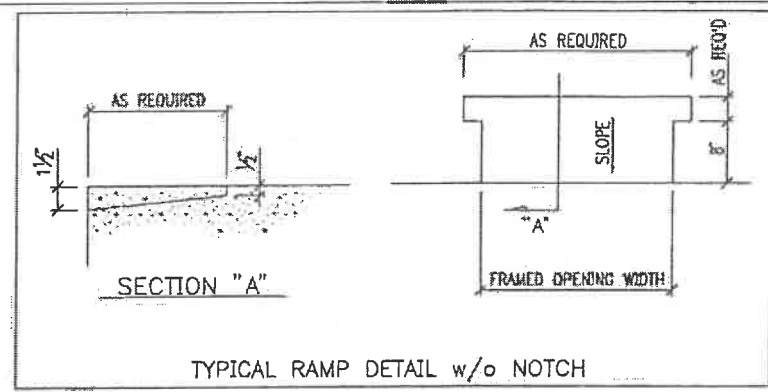
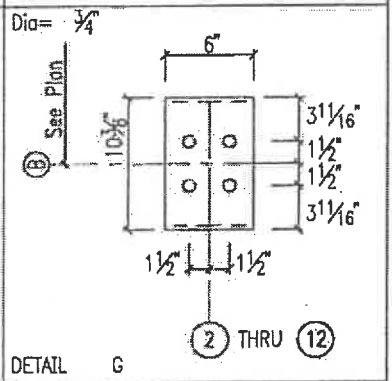
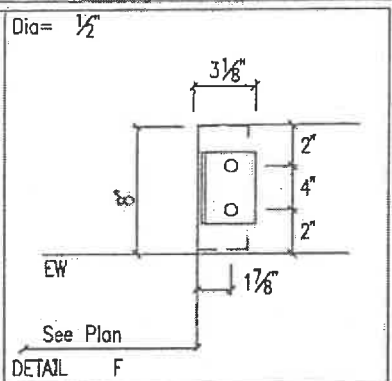
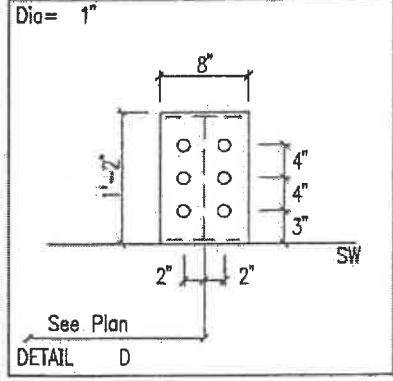
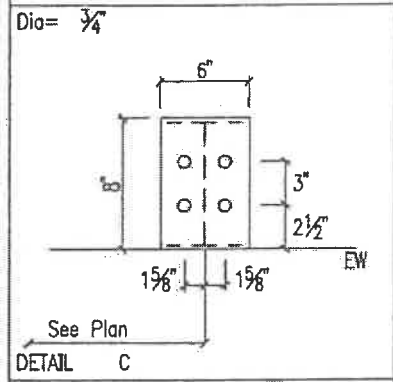
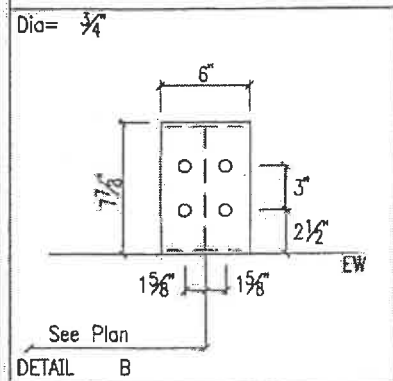
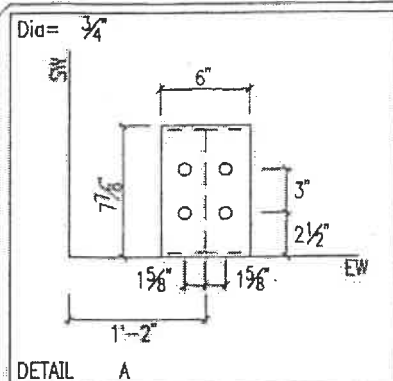
PROJECT/SITE INFO:
 WES COON
 N. 7775 ALBANY POST RD.
 RED HOOK, NY 12571

DESIGNED BY	
DRAWN BY KJM	DATE 4/28/17
DWG CHK BY	DATE
SCALE: NOT TO SCALE	
FILE ID: 4988	

INDEPENDENCE
 STEEL SUPPLY, LLC.

SHEET NUMBER A1 OF 3
JOB NUMBER 4988

4988_A1_Landwg-1 291



NOTE: All Base Plates @ 102'-6" (U.N.)

FOR CONSTRUCTION

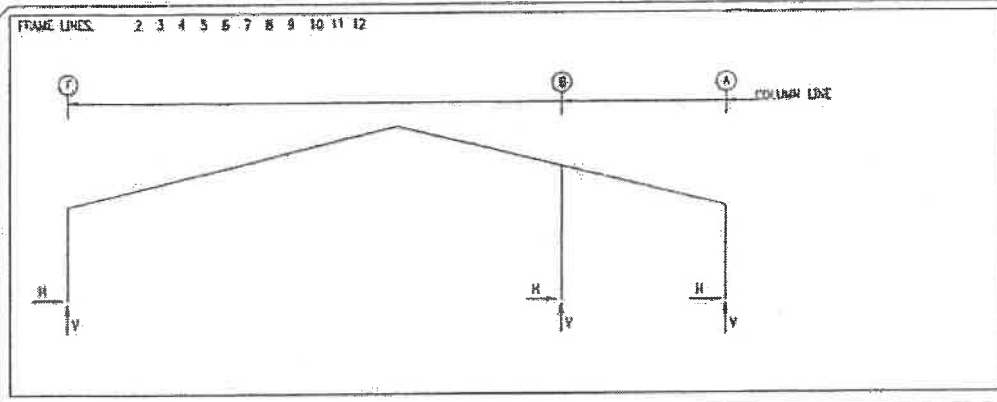


05/02/17

THIS ENGINEERING SEAL APPLIES ONLY TO THE STRUCTURAL DESIGN OF PROPERLY INSTALLED MATERIALS THAT ARE FABRICATED AND DESIGNED BY THE METAL BUILDING MANUFACTURER (M.B.M.). ANY MATERIAL NOT DESIGNED OR NOT FABRICATED BY THE M.B.M. IS SPECIFICALLY EXCLUDED. THE LICENSED PROFESSIONAL ENGINEER WHOSE SEAL APPEARS ON THESE DRAWINGS IS EMPLOYED BY THE M.B.M., AND IS NOT THE ENGINEER OF RECORD FOR THIS PROJECT.

DESCRIPTION	REV. NO.	BY	DATE
	1		
CUSTOMER			
INDEPENDENCE STEEL			
116 SOLLER HEIGHTS RD.			
GHENT, NY 12075			
PROJECT/SITE INFO.			
WES COON			
N. 7775 ALBANY POST RD.			
RED HOOK, NY 12571			
DESIGNED BY			
DRAWN BY		DATE	
KJM		4/28/17	
DWG CHK BY		DATE	
SCALE: NOT TO SCALE			
FILE ID: 4988			
A2 OF 3			
JOB NUMBER			
4988			

4988_A2_andDwg-2



ENDWALL COLUMN: BASIC COLUMN REACTIONS (k)

Frame Line	Col Line	Dead	Collat	Live	Snow	Wind_Left1	Wind_Right1	Wind_Left2	Wind_Right2	Wind Press
1	F	0.8	0.5	3.0	7.8	0.0	-3.3	0.0	-3.3	-1.4
1	E	1.2	1.1	5.4	11.0	0.6	-5.7	0.0	-3.0	-3.3
1	D	0.7	0.4	2.2	4.7	0.0	0.4	0.6	-1.8	-2.8
1	C	0.8	0.8	2.7	5.8	0.0	-1.5	0.0	-1.2	-2.8
1	B	1.1	1.0	4.8	8.8	0.0	-3.7	0.0	-3.7	-1.2
1	A	0.8	0.4	2.7	7.1	0.0	-2.8	0.0	-3.1	-3.0

Frame Line	Col Line	Wind Suct	Wind Long1	Wind Long2	Seis_Left	Seis_Right	E2UNB_SL_L	E2UNB_SL_R	-LWIND1_L	
1	F	1.6	-1.8	-0.2	0.0	0.1	0.0	4.8	0.0	-0.5
1	E	3.5	-4.5	-0.5	2.4	-3.6	0.0	4.2	0.0	12.1
1	D	3.0	-1.1	-0.1	0.0	3.6	2.4	-4.2	0.0	7.6
1	C	2.9	-1.7	-0.2	0.0	0.2	0.0	2.3	0.0	8.9
1	B	1.3	-4.0	-0.5	0.0	-0.2	0.0	3.0	0.0	18.5
1	A	0.1	-1.6	-0.2	0.0	-0.1	0.0	0.1	0.0	4.3

Frame Line	Col Line	-LWIND1_R	-LWIND2_L	-LWIND2_R
1	F	0.0	0.0	-0.5
1	E	0.2	-0.3	0.0
1	D	0.0	0.3	-0.1
1	C	0.0	0.2	0.0
1	B	0.0	-0.4	0.0
1	A	0.0	-0.5	0.0

Frame Line	Col Line	Dead	Collat	Live	Snow	Wind_Left1	Wind_Right1	Wind_Left2	Wind_Right2	Wind Press
13	A	0.9	0.5	3.0	7.8	0.0	-3.3	0.0	-3.3	-1.4
13	B	1.2	1.1	5.2	10.8	0.0	-5.5	0.0	-5.5	-4.1
13	C	0.9	0.8	3.0	8.3	0.0	-1.7	0.0	-1.7	-2.8
13	D	0.6	0.5	2.4	5.2	0.7	-2.1	0.0	2.3	-4.7
13	E	1.4	1.2	5.8	12.1	0.0	-3.3	0.7	-2.2	0.0
13	F	0.9	0.5	3.2	8.4	0.0	-3.2	0.0	-3.6	0.0

Frame Line	Col Line	Wind Suct	Wind Long1	Wind Long2	Seis_Left	Seis_Right	E2UNB_SL_L	E2UNB_SL_R	-LWIND1_L	
13	A	1.4	-1.8	-0.2	0.0	0.1	0.0	-0.1	0.0	4.7
13	B	3.2	-4.4	-0.5	0.0	0.2	0.0	-0.2	0.0	11.5
13	C	2.9	-1.9	-0.2	0.0	-0.2	0.0	0.2	0.0	9.9
13	D	2.9	-1.2	-0.1	2.6	-4.5	0.0	3.9	0.0	3.1
13	E	3.5	-5.0	-0.6	0.0	4.5	2.8	-3.9	0.0	3.5
13	F	1.6	-2.0	-0.2	0.0	-0.1	0.0	0.1	0.0	1.6

Frame Line	Col Line	-LWIND1_R	-LWIND2_L	-LWIND2_R
13	A	0.0	0.0	-0.5
13	B	0.0	0.0	-0.5
13	C	0.0	-0.1	0.2
13	D	0.2	-0.1	0.3
13	E	0.0	-0.1	0.2
13	F	0.0	-0.6	0.0

RIGID FRAME: BASIC COLUMN REACTIONS (k)

Frame Line	Column Line	Dead	Collateral	Live	Snow	Wind_Left1	Wind_Right1	Wind_Left2	Wind_Right2	Seismic_Left	Seismic_Right
2*	F	3.0	4.5	3.2	3.9	9.2	12.7	32.0	45.2	-9.6	-14.5
2*	A	-2.8	3.5	-3.0	3.0	-8.5	9.9	-29.5	35.7	10.2	-10.8
2*	B	-0.2	2.1	-0.2	1.9	-0.7	5.4	-2.4	18.8	0.7	-3.9

Frame Line	Column Line	Wind_Left2	Wind_Right2	Wind_Long1	Wind_Long2	Seismic_Left	Seismic_Right
2*	F	-5.0	-1.8	0.1	1.0	-8.9	-15.5
2*	A	-2.1	1.8	-2.2	0.0	11.9	-13.3
2*	B	-0.1	-0.8	-0.2	-1.8	0.9	-5.4

Frame Line	Column Line	Seismic_Long	LWIND1_L2E	LWIND1_R2E	LWIND2_L2E	LWIND2_R2E	F2PAT_LL_1
2*	F	0.0	-5.2	-0.4	-1.6	0.0	0.0
2*	A	0.0	-5.2	0.8	-0.7	-0.3	-0.8
2*	B	0.0	0.0	0.0	-0.7	0.0	0.7

Frame Line	Column Line	F2PAT_LL_2	F2UNB_SL_L	F2UNB_SL_R	
2*	F	0.0	0.0	35.1	42.3
2*	A	-0.1	3.0	-32.4	26.0
2*	B	0.1	3.4	-2.7	-1.0

Frame Line	Column Line	Dead	Collateral	Live	Snow	Wind_Left1	Wind_Right1	Wind_Left2	Wind_Right2	Seismic_Left	Seismic_Right
10*	F	3.0	4.4	3.0	3.7	8.7	12.0	30.4	43.0	-9.5	-14.2
10*	A	-2.7	3.5	-2.8	2.8	-8.0	9.4	-28.1	33.9	3.6	-6.6
10*	B	-0.2	2.1	-0.2	1.8	-0.7	5.1	-2.3	17.9	0.5	-5.2

Frame Line	Column Line	Wind_Left2	Wind_Right2	Wind_Long1	Wind_Long2	Seismic_Left	Seismic_Right
10*	F	-4.5	-1.7	0.6	1.1	-8.7	-15.0
10*	A	-0.8	1.4	4.8	-1.9	8.0	-12.0
10*	B	0.0	-0.4	0.1	0.1	0.7	-6.0

Frame Line	Column Line	Seismic_Long	LWIND1_L2E	LWIND1_R2E	LWIND2_L2E	LWIND2_R2E	F2PAT_LL_1
10*	F	0.0	-6.4	-0.4	-1.5	0.0	0.0
10*	A	0.0	-6.4	0.7	-0.7	-0.3	-0.8
10*	B	0.0	0.0	0.0	0.6	-0.1	-0.7

Frame Line	Column Line	F2PAT_LL_2	F2UNB_SL_L	F2UNB_SL_R	
10*	F	0.0	0.0	33.3	40.1
10*	A	-0.1	2.9	-30.8	24.6
10*	B	0.1	3.2	-2.5	-1.0

ANCHOR BOLT SUMMARY

Qty	Locate	Dia (in)	Type	Proj (in)
○ 12	Jamb	1/2"	A307	1.00
○ 48	Endwall	3/4"	A307	2.50
○ 132	Frame	1"	A307	3.00
○ 44	Frame	3/4"	A307	2.50

BUILDING BRACING REACTIONS

Wall Loc	Col Line	± Reactions(k)	Panel Shear (lb/ft)			
		Wind	Seismic			
		Horz	Vert			
L_EW	1	E,D	2.1	3.3	1.2	1.9
F_SW	A	2,3	1.6	0.9	4.4	2.6
		6,7	1.6	0.8	4.4	2.4
		11,12	1.6	1.1	4.4	3.2
R_EW	13	D,E	2.3	3.6	1.3	2.0
B_SW	F	12,11	1.6	1.1	4.4	3.2
		7,6	1.6	0.8	4.4	2.4
		3,2	1.6	0.9	4.4	2.6

THIS ENGINEERING SEAL APPLIES ONLY TO THE STRUCTURAL DESIGN OF PROPERLY INSTALLED MATERIALS THAT ARE FABRICATED AND DESIGNED BY THE METAL BUILDING MANUFACTURER (M.B.M.). ANY MATERIAL NOT DESIGNED OR NOT FABRICATED BY THE M.B.M. IS SPECIFICALLY EXCLUDED. THE LICENSED PROFESSIONAL ENGINEER WHOSE SEAL APPEARS ON THESE DRAWINGS IS EMPLOYED BY THE M.B.M., AND IS NOT THE ENGINEER OF RECORD FOR THIS PROJECT.

REV. NO.	BY	DATE
1		

CUSTOMER:
INDEPENDENCE STEEL
116 SOLLER HEIGHTS RD.
GHENT, NY 12075

PROJECT/SITE INFO:
WES COON
N. 775 ALBANY POST RD.
RED HOOK, NY 12571

DESIGNED BY: _____

DRAWN BY: KJM **DATE:** 4/28/17

DWG CHK BY: _____ **DATE:** _____

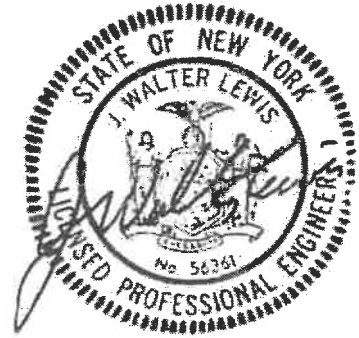
SCALE: NOT TO SCALE

FILE ID: 4988

INDEPENDENCE STEEL SUPPLY, L.L.C.

SHEET NUMBER
A3 OF 3

JOB NUMBER
4988



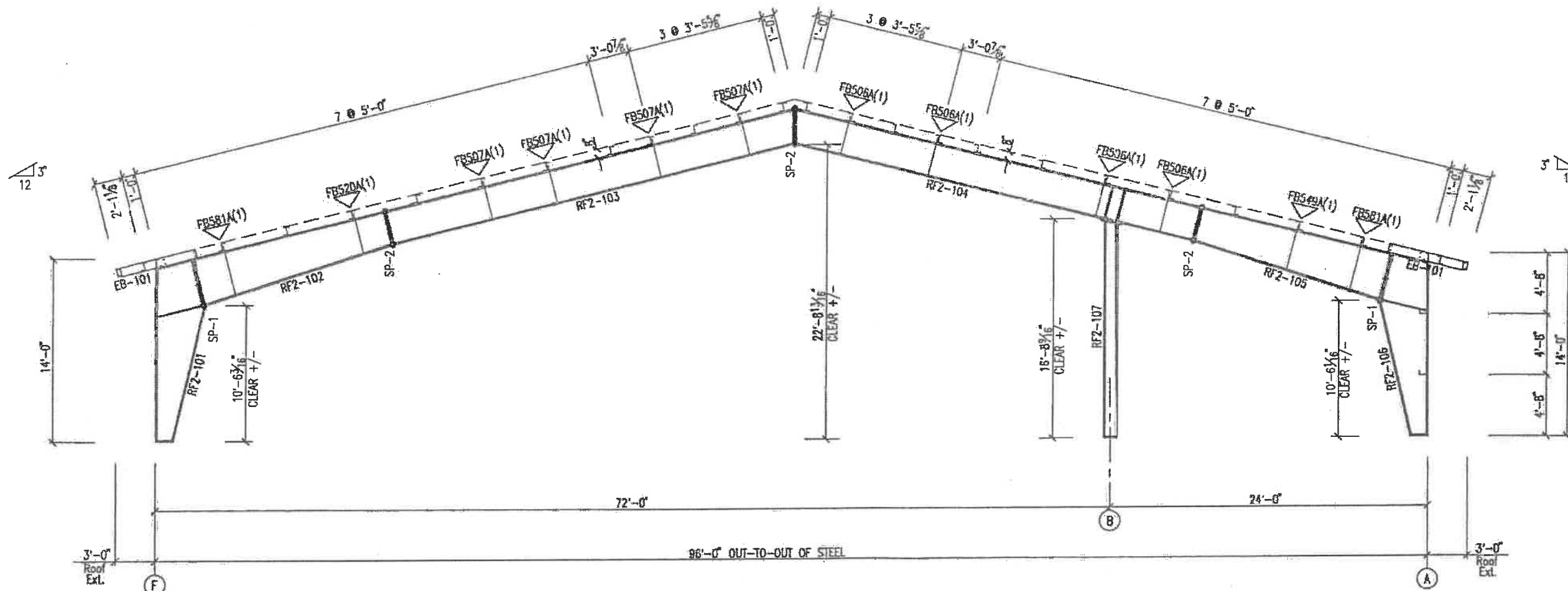
FOR CONSTRUCTION

05/02/17

SPLICE BOLT TABLE						CAP PLATE BOLTS					
Mark	Qty Top	Qty Bot	Int	Type	Dia	Length	Mark	Qty	Type	Dia	Length
SP-1	4	4	2	A325	1"	4"	RF2-107	8	A325	3/4"	2 1/2"
SP-2	4	4	2	A325	3/4"	2 1/2"					

▽ FLANGE BRACES: (1) One Side; (2) Two Sides
 FBxxA(1): xx=length(in)
 A - L2X2X125

Mark	Web Depth		Web Plate		Outside Flange W x Thk x Length	Inside Flange W x Thk x Length
	Start/End	Thick	Thick	Length		
RF2-101	13.1/42.0	0.313	13'-10 5/16"		6 x 5/16" x 13'-2 5/8"	6 x 5/8" x 10'-3 1/2"
RF2-102	42.0/29.0	0.313	14'-9 1/2"		6 x 5/16" x 2'-7 9/16"	6 x 3/8" x 14'-9 15/16"
RF2-103	29.0/29.0	0.250	16'-0"		6 x 5/16" x 14'-9 1/2"	6 x 1/4" x 31'-1 3/8"
RF2-104	29.0/29.0	0.250	15'-8 11/16"		6 x 3/8" x 31'-8 11/16"	6 x 3/8" x 23'-10 3/4"
RF2-105	29.0/29.0	0.250	15'-8 11/16"		6 x 1/4" x 31'-8 11/16"	6 x 3/8" x 5'-6 15/16"
RF2-106	29.0/42.0	0.250	14'-9 9/16"		6 x 5/8" x 2'-7 9/16"	6 x 1/2" x 14'-10"
RF2-107	42.0/13.1	0.313	13'-10 5/16"		6 x 5/16" x 13'-2 5/8"	6 x 5/8" x 10'-3 7/16"
RF2-107	W10X26					



RIGID FRAME ELEVATION: FRAME LINE 10 11 12

For Permit Purposes Only



05/02/17

THIS ENGINEERING SEAL APPLIES ONLY TO THE STRUCTURAL DESIGN OF PROPERLY INSTALLED MATERIALS THAT ARE FABRICATED AND DESIGNED BY THE METAL BUILDING MANUFACTURER (M.B.M.). ANY MATERIAL NOT DESIGNED OR NOT FABRICATED BY THE M.B.M. IS SPECIFICALLY EXCLUDED. THE LICENSED PROFESSIONAL ENGINEER WHOSE SEAL APPEARS ON THESE DRAWINGS IS EMPLOYED BY THE M.B.M., AND IS NOT THE ENGINEER OF RECORD FOR THIS PROJECT.

DESCRIPTION	REV. NO.	BY	DATE
	1		
	2		
	3		
	4		
	5		
	6		
	7		
	8		
	9		
	10		
	11		
	12		
	13		
	14		
	15		
	16		
	17		
	18		
	19		
	20		
	21		
	22		
	23		
	24		
	25		
	26		
	27		
	28		
	29		
	30		
	31		
	32		
	33		
	34		
	35		
	36		
	37		
	38		
	39		
	40		
	41		
	42		
	43		
	44		
	45		
	46		
	47		
	48		
	49		
	50		
	51		
	52		
	53		
	54		
	55		
	56		
	57		
	58		
	59		
	60		
	61		
	62		
	63		
	64		
	65		
	66		
	67		
	68		
	69		
	70		
	71		
	72		
	73		
	74		
	75		
	76		
	77		
	78		
	79		
	80		
	81		
	82		
	83		
	84		
	85		
	86		
	87		
	88		
	89		
	90		
	91		
	92		
	93		
	94		
	95		
	96		
	97		
	98		
	99		
	100		
	101		
	102		

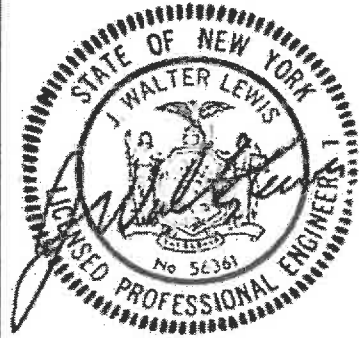
CUSTOMER: INDEPENDENCE STEEL
 116 SOLLER HEIGHTS RD.
 CHEST, NY 12075
 PROJECT/SITE INFO:
 WES COON
 N. 7775 ALBANY POST RD.
 RED HOOK, NY 12571

DESIGNED BY: _____ DATE: _____
 DRAWN BY: KJM DATE: 5/1/17
 DWG CHK BY: _____ DATE: _____
 SCALE: NOT TO SCALE
 FILE ID: 4988

INDEPENDENCE
 STEEL SUPPLY, L.L.C.

SHEET NUMBER: E2 OF 9
 JOB NUMBER: 4988

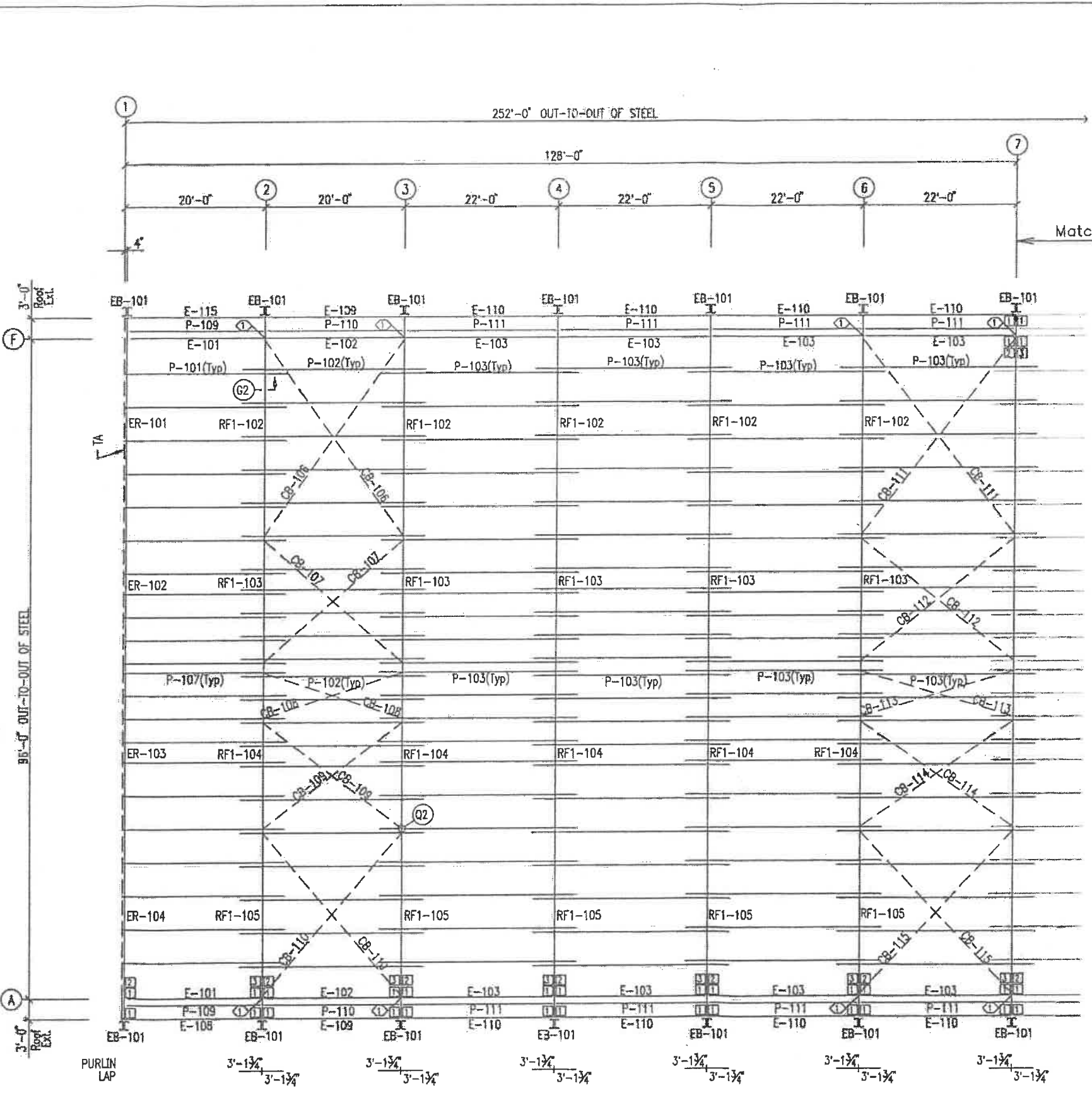
4988_E2_RFDwg-2 102



05/02/17

26 Ga. PBR - Polar White SOFFIT PANELS

FULL MASTIC REQUIRED AT ROOF PANEL SIDELAPS



ROOF FRAMING PLAN

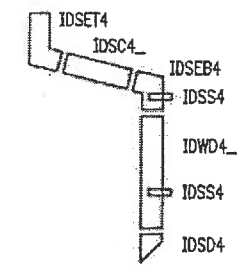
For Permit Purposes Only

EXTENSION/CANOPY BOLTS ROOF PLAN				
MARK	QUAN	TYPE	DIA	LENGTH
EB-101	4	A325	1/2	1 1/2

SPECIAL BOLTS ROOF PLAN					
ID	QUAN	TYPE	DIA	LENGTH	WASH
1	2	A325	1/2	1 1/2	0
2	2	A325	1/2	1 1/2	2

CONNECTION PLATES ROOF PLAN	
ID	MARK/PART
1	L99
2	L115-3R
3	L115-3L

MEMBER TABLE ROOF PLAN	
MARK	PART
EB-101	2-8C22R
P-101	8Z32R
P-102	8Z34R
P-103	8Z34R
P-107	8Z32R
P-109	8Z24R
P-110	8Z24R
P-111	8Z22R
E-101	8L30N4R
E-102	8L30N2R
E-103	8L30N2R
E-108	8c24R
E-109	8c24R
E-110	8c22R
E-115	8c24R
CB-106	5/16_CBL
CB-107	1/4_CBL
CB-108	1/4_CBL
CB-109	1/4_CBL
CB-110	5/16_CBL
CB-111	1/4_CBL
CB-112	1/4_CBL
CB-113	1/4_CBL
CB-114	1/4_CBL
CB-115	1/4_CBL



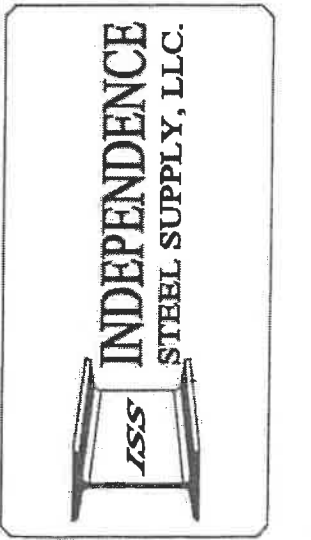
() REQ'D
 SEE ROOF PLAN FOR DOWNSPOUT LOCATION.

THIS ENGINEERING SEAL APPLIES ONLY TO THE STRUCTURAL DESIGN OF PROPERLY INSTALLED MATERIALS THAT ARE FABRICATED AND DESIGNED BY THE METAL BUILDING MANUFACTURER (M.B.M.). ANY MATERIAL NOT DESIGNED OR NOT FABRICATED BY THE M.B.M. IS SPECIFICALLY EXCLUDED. THE LICENSED PROFESSIONAL ENGINEER WHOSE SEAL APPEARS ON THESE DRAWINGS IS EMPLOYED BY THE M.B.M., AND IS NOT THE ENGINEER OF RECORD FOR THIS PROJECT.

REV. NO.	BY	DATE

CUSTOMER: INDEPENDENCE STEEL
 116 SOLLER HEIGHTS RD.
 GHENT, NY 12075
 PROJECT/SITE INFO:
 WES COON
 N. 7775 ALBANY POST RD.
 RED HOOK, NY 12571

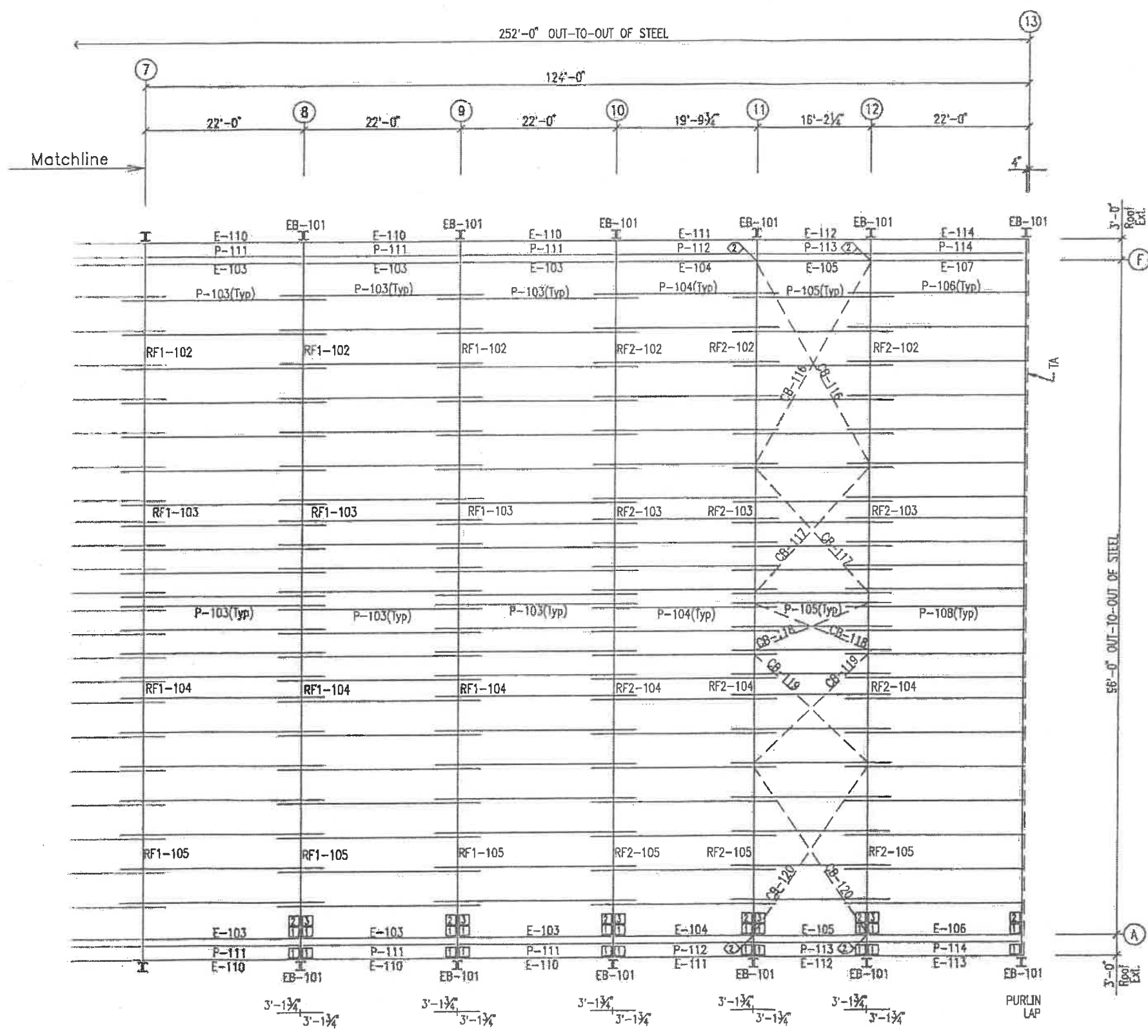
DESIGNED BY: _____
 DRAWN BY: KJM DATE: 5/1/17
 DWG CHK BY: _____ DATE: _____
 SCALE: NOT TO SCALE
 FILE ID: 4988



SHEET NUMBER: E3 OF 9
 JOB NUMBER: 4988

4988_E3_RoofDwg

197



EXTENSION/CANOPY BOLTS
ROOF PLAN

MARK	QUAN	TYPE	DIA	LENGTH
EB-101	4	A325	1/2"	1 1/4"

SPECIAL BOLTS
ROOF PLAN

ID	QUAN	TYPE	DIA	LENGTH	WASH
1	2	A325	1/2"	1 1/4"	0
2	2	A325	1/2"	1 1/4"	2

CONNECTION PLATES
ROOF PLAN

ID	MARK/PART
1	L99
2	L115-3L
3	L115-3R

MEMBER TABLE
ROOF PLAN

MARK	PART
EB-101	2-8C22R
P-103	8Z34R
P-104	8Z34R
P-105	8Z34R
P-106	8Z32R
P-108	8Z32R
P-111	8Z22R
P-112	8Z24R
P-113	8Z26R
P-114	8Z22R
E-103	8L30N2R
E-104	8L30N4R
E-105	8L30N4R
E-106	8L30N4R
E-107	8L30N2R
E-110	8C22R
E-111	8C24R
E-112	8C26R
E-113	8C22R
E-114	8C22R
CB-116	5/16_CBL
CB-117	1/4_CBL
CB-118	1/4_CBL
CB-119	1/4_CBL
CB-120	5/16_CBL

26 Ga. PBR - Polar White
SOFFIT PANELS

26 Ga. PBR - Polar White
SOFFIT PANELS



05/02/17

ROOF FRAMING PLAN

For Permit Purposes Only

THIS ENGINEERING SEAL APPLIES ONLY TO THE STRUCTURAL DESIGN OF PROPERLY INSTALLED MATERIALS THAT ARE FABRICATED AND DESIGNED BY THE METAL BUILDING MANUFACTURER (M.B.M.). ANY MATERIAL NOT DESIGNED OR NOT FABRICATED BY THE M.B.M. IS SPECIFICALLY EXCLUDED. THE LICENSED PROFESSIONAL ENGINEER WHOSE SEAL APPEARS ON THESE DRAWINGS IS EMPLOYED BY THE M.B.M., AND IS NOT THE ENGINEER OF RECORD FOR THIS PROJECT.

REV. NO.	BY	DATE

DESCRIPTION: 4988_E4_RoofDwg

CUSTOMER: INDEPENDENCE STEEL
116 SOLLER HEIGHTS RD.
CHEMUNY, NY 12075

PROJECT/SITE INFO:
WES COON
N. 7775 ALBANY POST RD.
RED HOOK, NY 12571

DESIGNED BY: _____

DRAWN BY: KJM DATE: 5/1/17

DWG CHK BY: _____ DATE: _____

SCALE: NOT TO SCALE

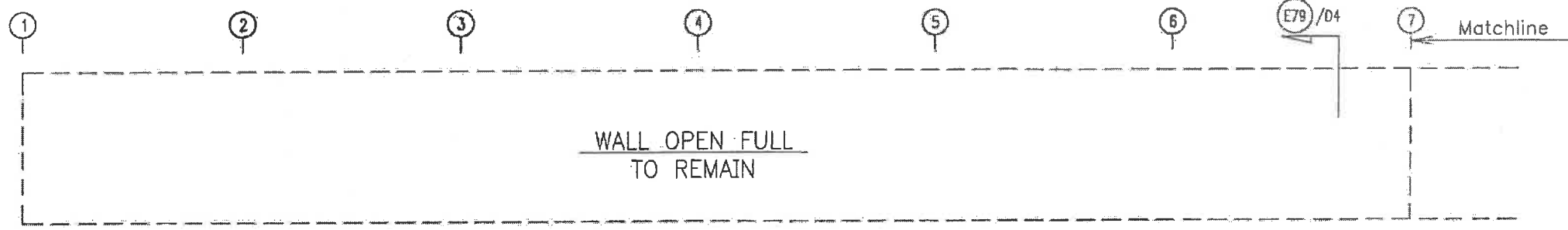
FILE ID: 4988

INDEPENDENCE STEEL SUPPLY, LLC.

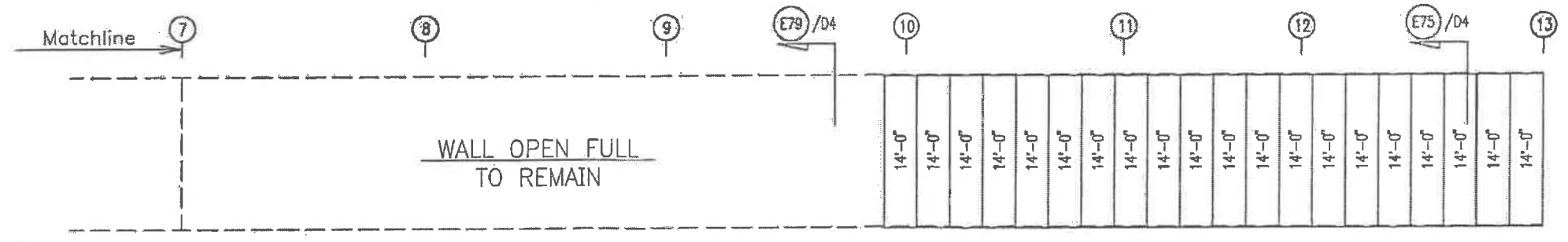
SHEET NUMBER: E4 OF 9

JOB NUMBER: 4988

TRIM TABLE		
FRAME LINE A		
ID	QUAN	PART
1	1	IOCT14



SIDEWALL SHEETING & TRIM: FRAME LINE A
 PANELS: 26 Ga. PBR - Rustic Red



SIDEWALL SHEETING & TRIM: FRAME LINE A
 PANELS: 26 Ga. PBR - Rustic Red



05/02/17

For Permit Purposes Only

THIS ENGINEERING SEAL APPLIES ONLY TO THE STRUCTURAL DESIGN OF PROPERLY INSTALLED MATERIALS THAT ARE FABRICATED AND DESIGNED BY THE METAL BUILDING MANUFACTURER (M.B.M.). ANY MATERIAL NOT DESIGNED OR NOT FABRICATED BY THE M.B.M. IS SPECIFICALLY EXCLUDED. THE LICENSED PROFESSIONAL ENGINEER WHOSE SEAL APPEARS ON THESE DRAWINGS IS EMPLOYED BY THE M.B.M., AND IS NOT THE ENGINEER OF RECORD FOR THIS PROJECT.

REV. NO.	BY	DATE
1		
2		
3		
4		
5		

DESCRIPTION

CUSTOMER
 INDEPENDENCE STEEL
 116 SOLLER HEIGHTS RD.
 CHEMUNY, NY 12075

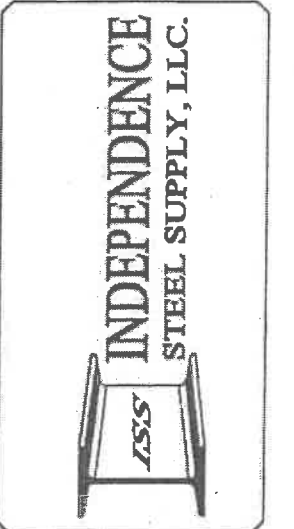
PROJECT/SITE INFO.
 WES COON
 N. 7775 ALBANY POST RD.
 RED HOOK, NY 12571

DESIGNED BY

DRAWN BY: KJM DATE: 5/1/17

DWG CHK BY DATE

SCALE: NOT TO SCALE
 FILE ID: 4988



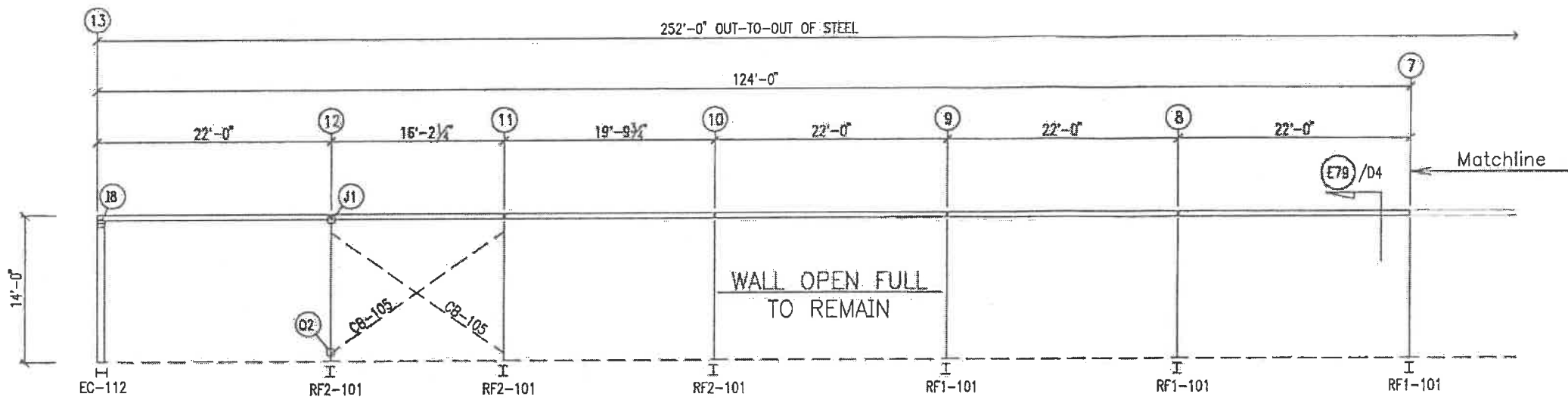
SHEET NUMBER
 E6 OF 9

JOB NUMBER
 4988

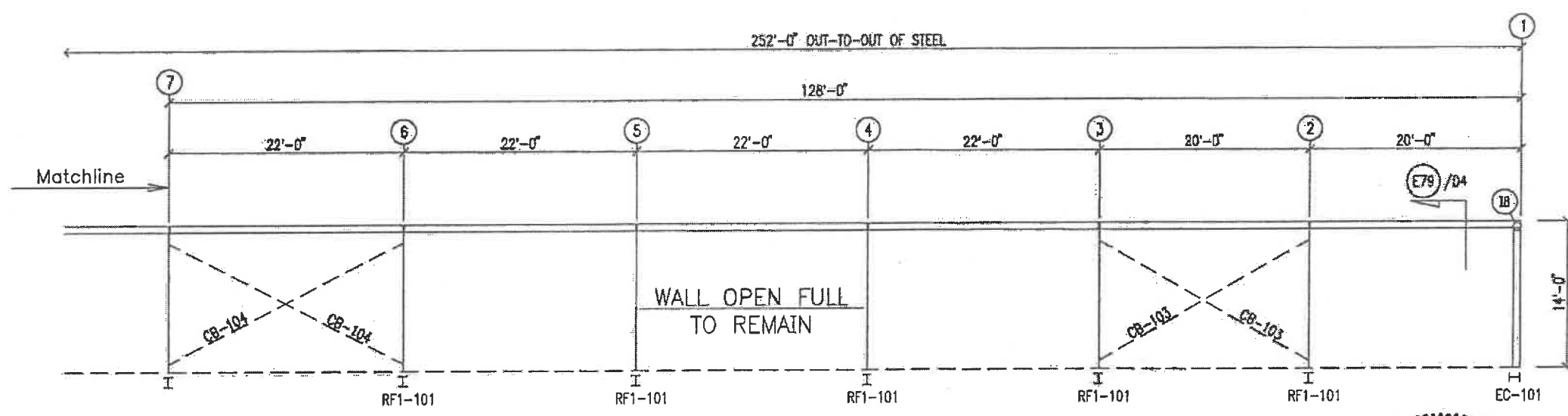
4988_E6_SwSHDwg-F 156

SPECIAL BOLTS					
Ø ID	QUAN	TYPE	DIA	LENGTH	WASH
2	2	A325	1/2"	1 1/2"	0
3	2	A325	3/4"	1 1/2"	2

MEMBER TABLE	
FRAME LINE F	
MARK	PART
CB-103	3/8_CBL
CB-104	3/8_CBL
CB-105	3/8_CBL

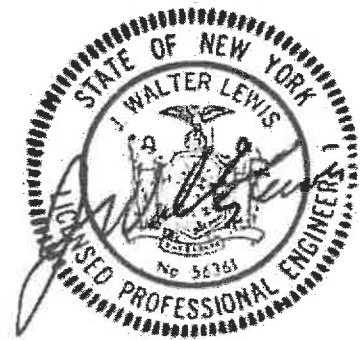


SIDEWALL FRAMING: FRAME LINE F



SIDEWALL FRAMING: FRAME LINE F

For Permit Purposes Only



05/02/17

THIS ENGINEERING SEAL APPLIES ONLY TO THE STRUCTURAL DESIGN OF PROPERLY INSTALLED MATERIALS THAT ARE FABRICATED AND DESIGNED BY THE METAL BUILDING MANUFACTURER (M.B.M.). ANY MATERIAL NOT DESIGNED OR NOT FABRICATED BY THE M.B.M. IS SPECIFICALLY EXCLUDED. THE LICENSED PROFESSIONAL ENGINEER WHOSE SEAL APPEARS ON THESE DRAWINGS IS EMPLOYED BY THE M.B.M., AND IS NOT THE ENGINEER OF RECORD FOR THIS PROJECT.

REV. NO.	BY	DATE
1		
2		
3		
4		
5		
6		
7		

CUSTOMER
INDEPENDENCE STEEL
116 SOLLER HEIGHTS RD.
GHENT, NY 12075

PROJECT/SITE INFO.
WES COON
N. 7775 ALBANY POST RD.
RED HOOK, NY 12571

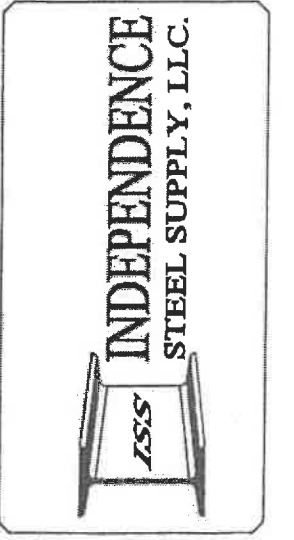
DESIGNED BY
KJM

DRAWN BY
KJM

DWG CHK BY

DATE
5/1/17

SCALE: NOT TO SCALE
FILE ID: 4988



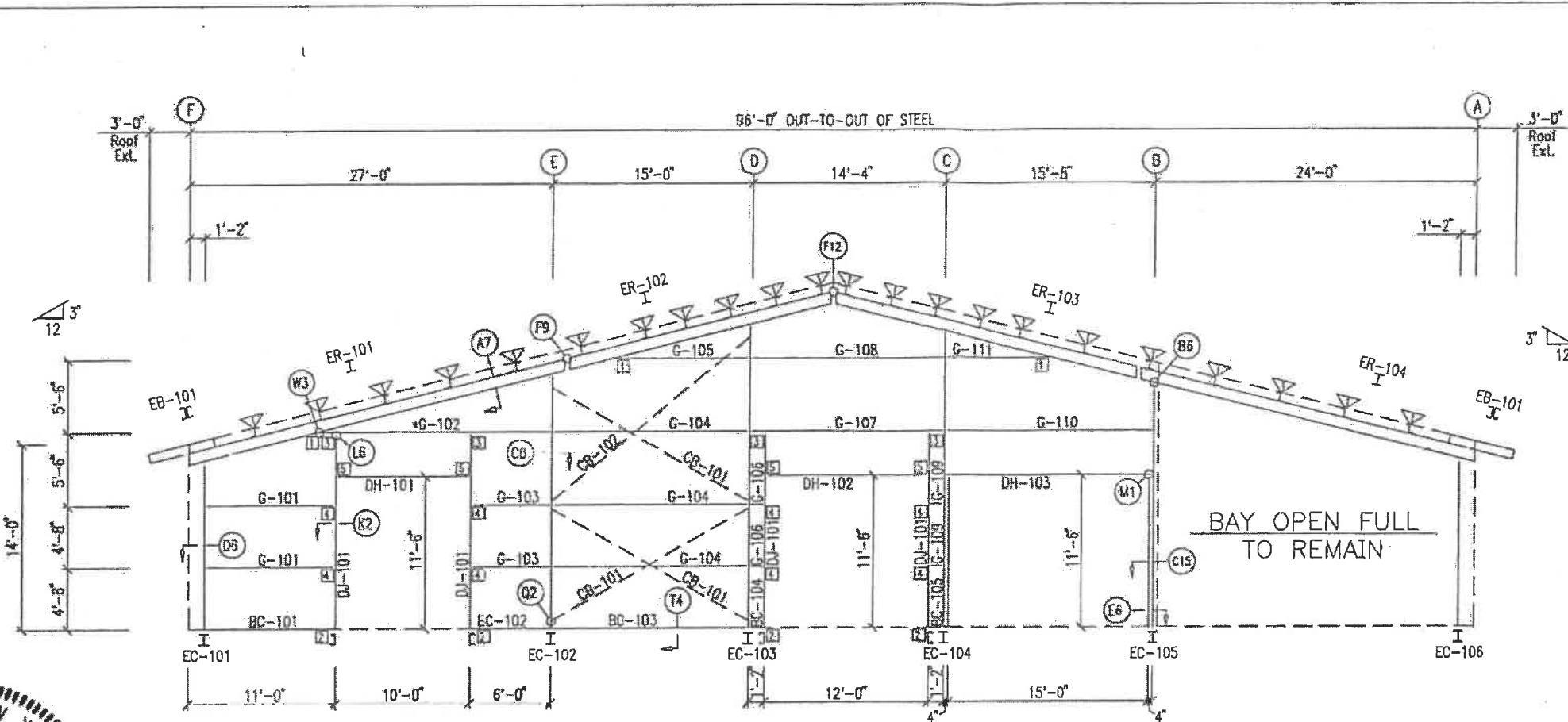
SHEET NUMBER
E7 OF 9

JOB NUMBER
4988

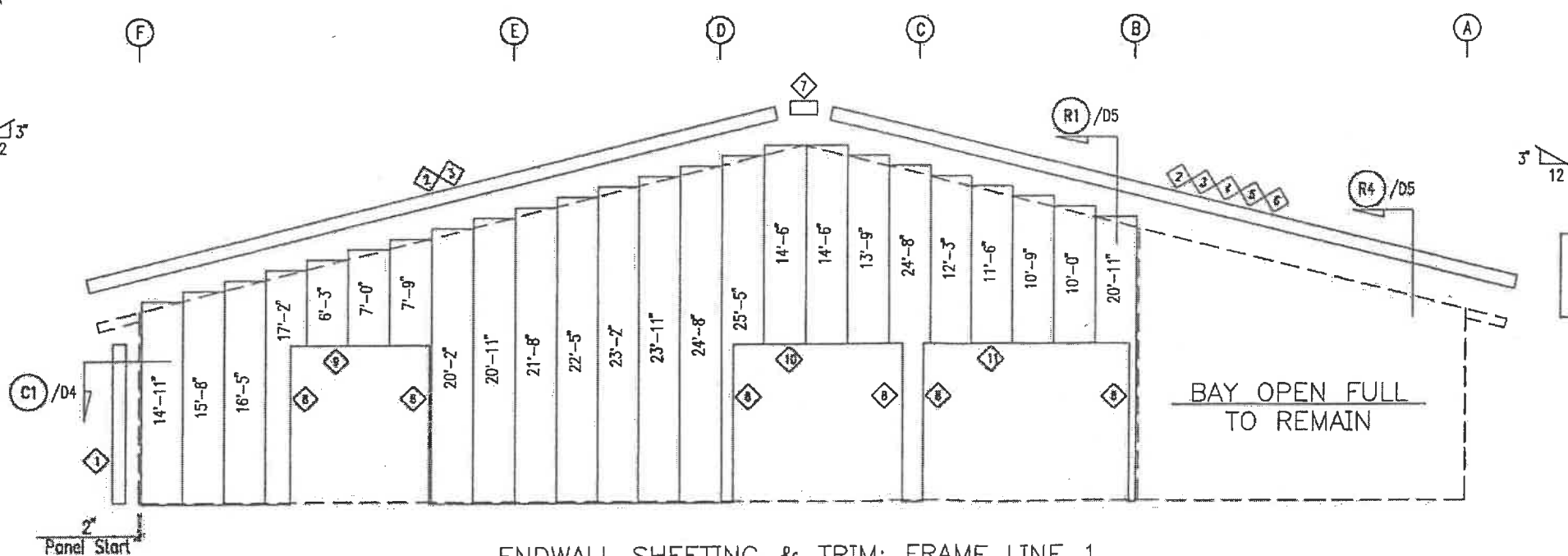
4988_E7_SwFrmDwg-B 156



05/02/17



ENDWALL FRAMING: FRAME LINE 1



ENDWALL SHEETING & TRIM: FRAME LINE 1

PANELS: 26 Ga. PBR - Rustic Red

For Permit Purposes Only

REFER TO F10/D5 & F12/D5 FOR FRAMED OPENING DETAIL

* BOLT BACK TO BACK C-SECTIONS w/ (2) 1/2" A307 BOLTS AT EACH END. FASTEN 5'-0" O.C. w/ (3) 12 x 1 1/4" S.D. SCREWS.

ID	QUAN	PART
1	1	IGCT15
2	1	RT15
3	2	RT20
4	1	RT10
5	1	BFL-93
6	1	BFL-93
7	1	PB3
8	1	ISCT12
9	1	IDCT10
10	1	IDCT12
11	1	IDCT15

ID	MARK	LENGTH
1	FB190A	1'-7 1/16"

ID	MARK/PART
1	b101
2	L4
3	L112
4	L99
5	L36

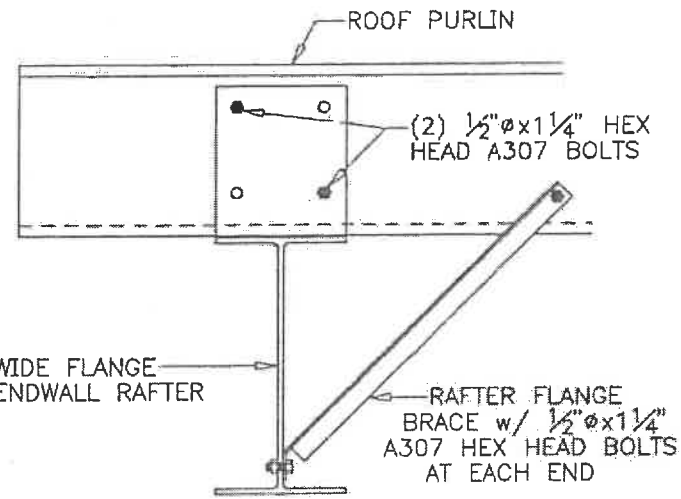
MARK	PART
EB-101	2-BC22R
EC-101	WBX10
EC-102	WBX10
EC-103	WBX13
EC-104	WBX13
EC-105	WBX10
EC-106	WBX10
ER-101	WBX18
ER-102	WBX18
ER-103	WBX18
ER-104	WBX18
DJ-101	8C34R
DH-101	8C26R
DH-102	8C26R
DH-103	8C26R
G-101	8Z26R
*G-102	2-8C24R
G-103	8Z26R
G-104	8Z26R
G-105	8Z26R
G-106	8Z26R
G-107	8Z26R
G-108	8Z26R
G-109	8Z26R
G-110	8Z26R
G-111	8Z26R
BC-101	8C26G
BC-102	8C26G
BC-103	8C26G
BC-104	8C26G
BC-105	8C26G
CB-101	1/4 CBL
CB-102	1/4 CBL

THIS ENGINEERING SEAL APPLIES ONLY TO THE STRUCTURAL DESIGN OF PROPERLY INSTALLED MATERIALS THAT ARE FABRICATED AND DESIGNED BY THE METAL BUILDING MANUFACTURER (M.B.M.). ANY MATERIAL NOT DESIGNED OR NOT FABRICATED BY THE M.B.M. IS SPECIFICALLY EXCLUDED. THE LICENSED PROFESSIONAL ENGINEER WHOSE SEAL APPEARS ON THESE DRAWINGS IS EMPLOYED BY THE M.B.M. AND IS NOT THE ENGINEER OF RECORD FOR THIS PROJECT.

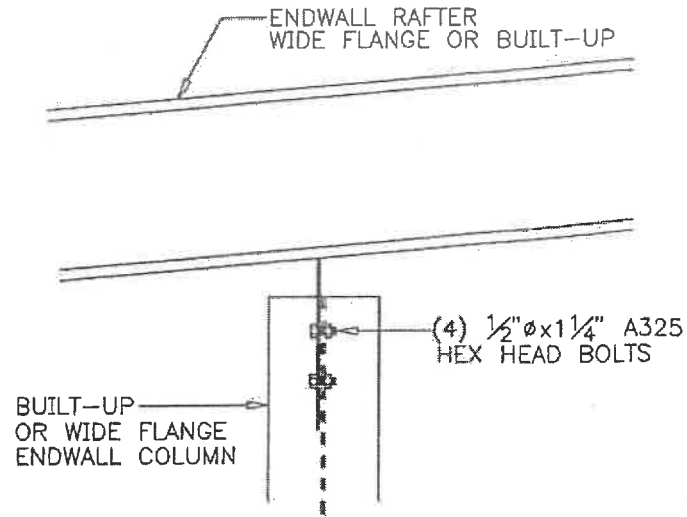
REV. NO.	BY	DATE
<<<<<<	<<<<<<	<<<<<<
DESCRIPTION		
CUSTOMER: INDEPENDENCE STEEL 116 SOLLER HEIGHTS RD. GHENT, NY 12075 PROJECT/SITE INFO: WES COON N. 775 ALBANY POST RD. RED HOOK, NY 12571		
DESIGNED BY		
DRAWN BY KJM		DATE 5/ 1/17
DWG CHK BY		DATE
SCALE: NOT TO SCALE		FILE ID: 4988
SHEET NUMBER EB OF 9		
JOB NUMBER 4988		

4988_EB_EwDwg-L

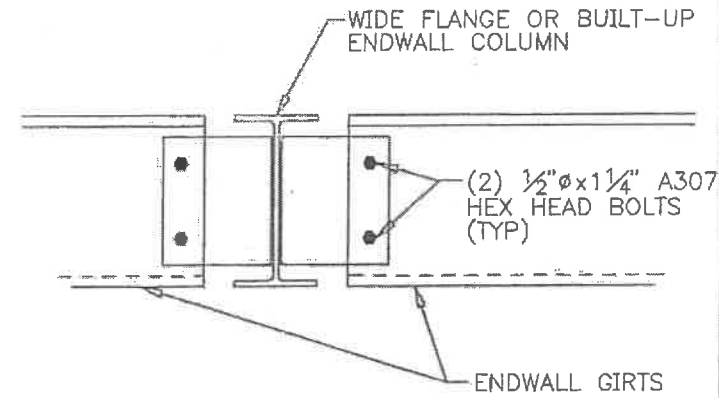
129



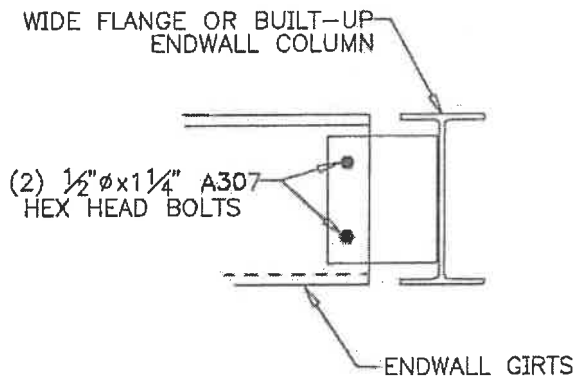
A7 SECTION THRU ENDWALL RAFTER



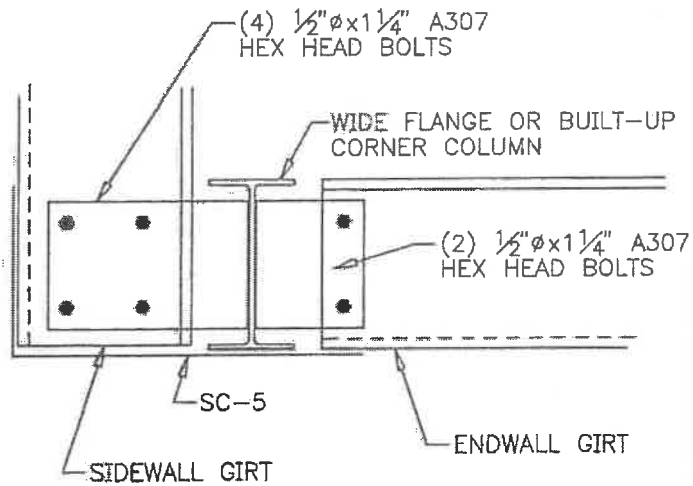
B6 ENDWALL RAFTER TO COLUMN



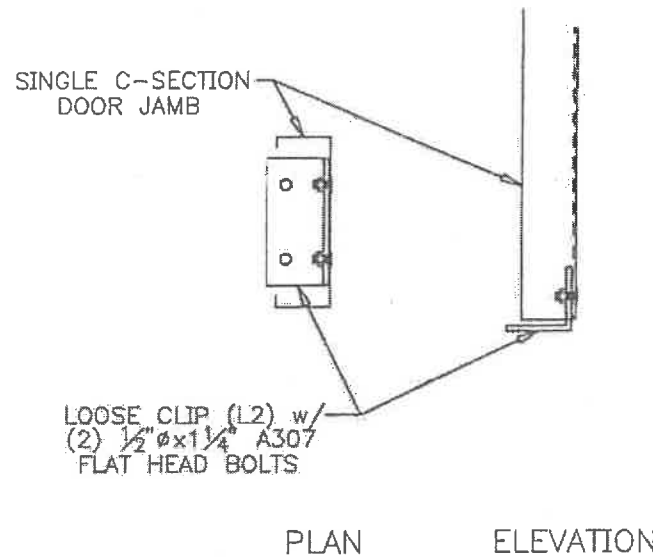
C6 ENDWALL COLUMN TO WALL GIRT



C15 ENDWALL COLUMN TO WALL GIRT



D6 CORNER COLUMN TO WALL GIRT



E6 BASE PLATE FOR DOOR JAMB

THIS ENGINEERING SEAL APPLIES ONLY TO THE STRUCTURAL DESIGN OF PROPERLY INSTALLED MATERIALS THAT ARE FABRICATED AND DESIGNED BY THE METAL BUILDING MANUFACTURER (M.B.M.). ANY MATERIAL NOT DESIGNED OR NOT FABRICATED BY THE M.B.M. IS SPECIFICALLY EXCLUDED. THE LICENSED PROFESSIONAL ENGINEER WHOSE SEAL APPEARS ON THESE DRAWINGS IS EMPLOYED BY THE M.B.M., AND IS NOT THE ENGINEER OF RECORD FOR THIS PROJECT.

REV. NO.	BY	DATE
1		

DESCRIPTION
4988_D1_Dwg-1

DESIGNED BY	
CUSTOMER	INDEPENDENCE STEEL
	116 SOLLER HEIGHTS RD.
	CHENY, NY 12075
	PROJECT/SITE INFO.
	WES COON
	N. 7775 ALBANY POST RD.
	RED HOOK, NY 12571
DRAWN BY	DATE
KJM	4/28/17
DWG CHK BY	DATE
SCALE: NOT TO SCALE	
FILE ID: 4988	

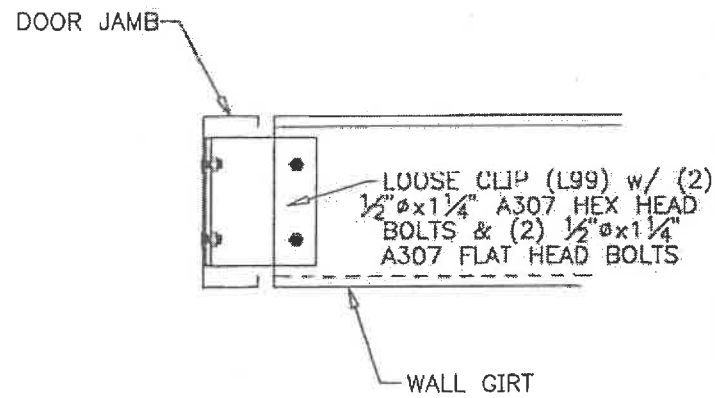
INDEPENDENCE
STEEL SUPPLY, LLC.

SHEET NUMBER	D1 OF 12
JOB NUMBER	4988

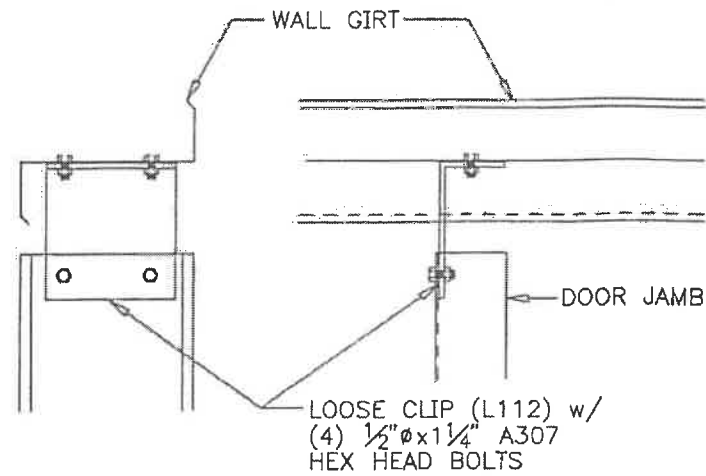
For Permit Purposes Only



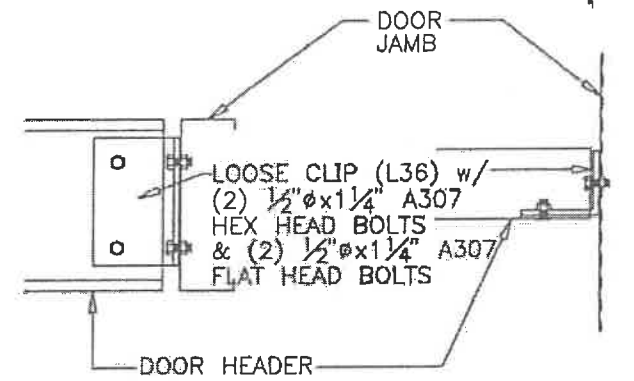
05/02/17



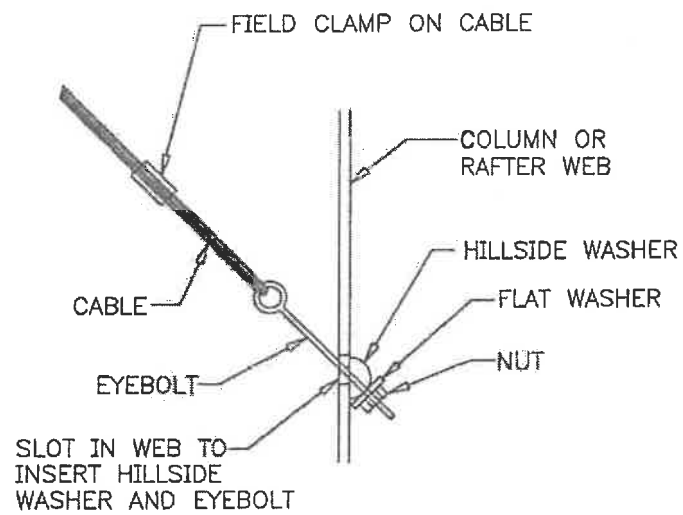
K2 WALL GIRT TO DOOR JAMB



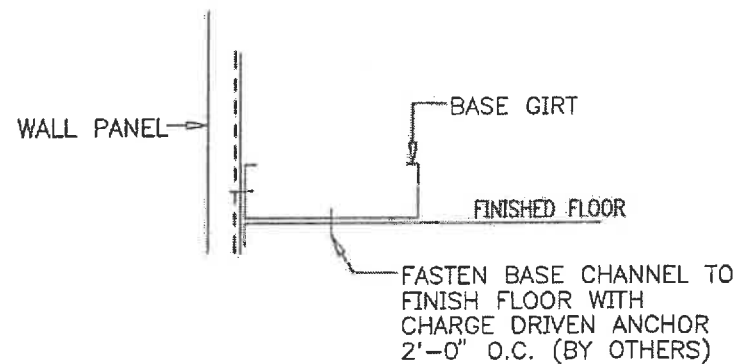
L6 DOOR JAMB TO WALL GIRT



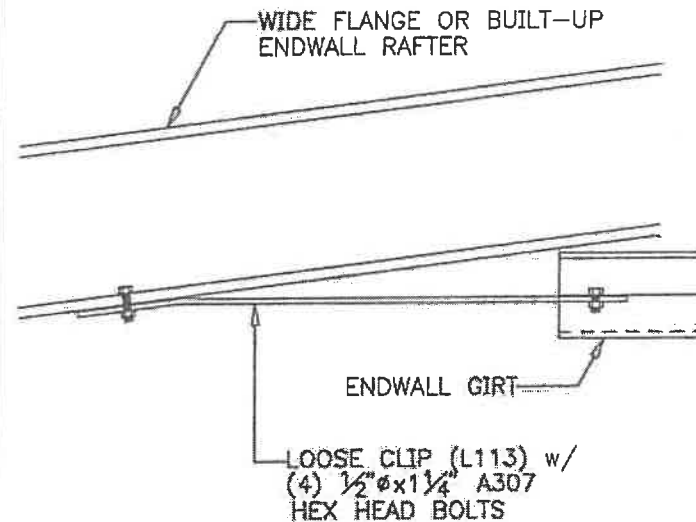
M1 DOOR HEADER TO DOOR JAMB



Q2 DIAGONAL CABLE, EYEBOLT END



T4 SECTION THRU WALL PANEL AND CONCRETE FOUNDATION



W3 SECTION OF ENDWALL GIRTS TO RAFTER

*SEE ANCHOR BOLT PLAN FOR NOTCH CONDITION

THIS ENGINEERING SEAL APPLIES ONLY TO THE STRUCTURAL DESIGN OF PROPERLY INSTALLED MATERIALS THAT ARE FABRICATED AND DESIGNED BY THE METAL BUILDING MANUFACTURER (M.B.M.). ANY MATERIAL NOT DESIGNED OR NOT FABRICATED BY THE M.B.M. IS SPECIFICALLY EXCLUDED. THE LICENSED PROFESSIONAL ENGINEER WHOSE SEAL APPEARS ON THESE DRAWINGS IS EMPLOYED BY THE M.B.M., AND IS NOT THE ENGINEER OF RECORD FOR THIS PROJECT.

REV. NO.	BY	DATE
1		

DESCRIPTION

CUSTOMER:
INDEPENDENCE STEEL
116 SOLLER HEIGHTS RD.
GHENT, NY 12075

PROJECT/SITE INFO:
WES COON
N. 7775 ALBANY POST RD.
RED HOOK, NY 12571

DESIGNED BY

DRAWN BY: KJM DATE: 4/28/17

DWG CHK BY DATE

SCALE: NOT TO SCALE

FILE ID: 4988

INDEPENDENCE
STEEL SUPPLY, LLC.

SHEET NUMBER: D3 OF 12

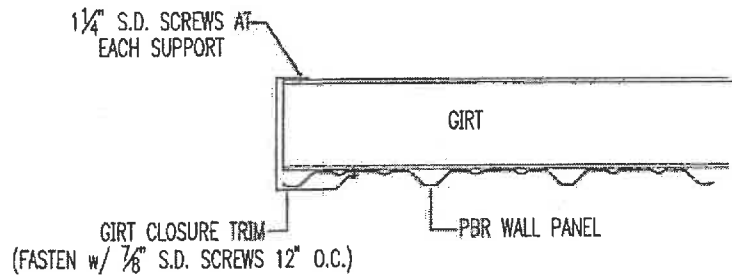
JOB NUMBER: 4988

For Permit Purposes Only

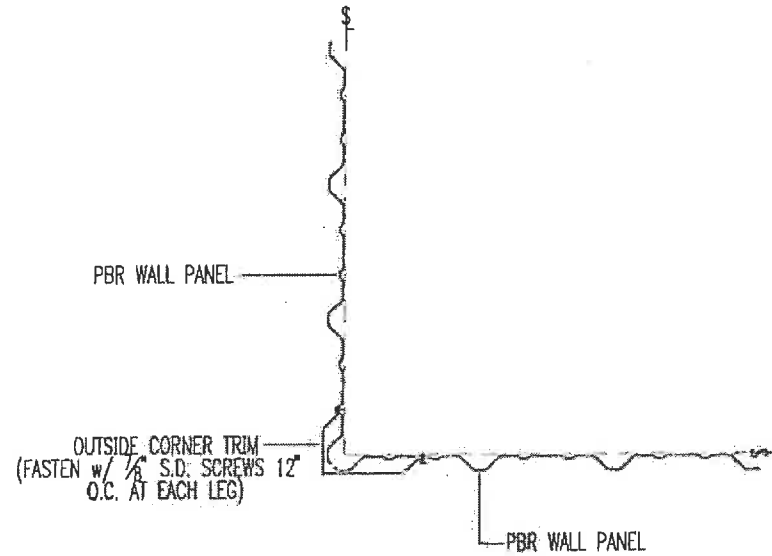


05/02/17

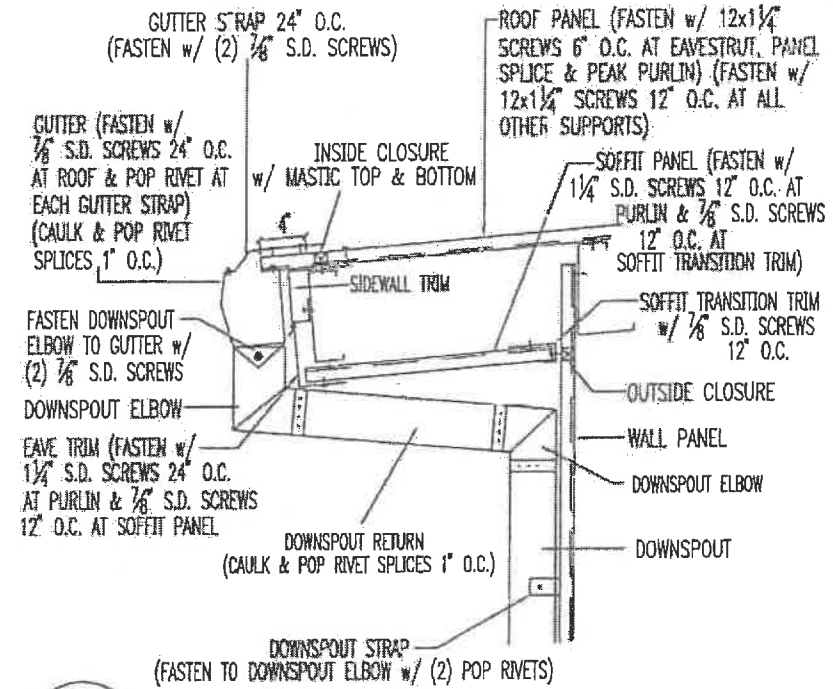
4988_D3_DWG-3



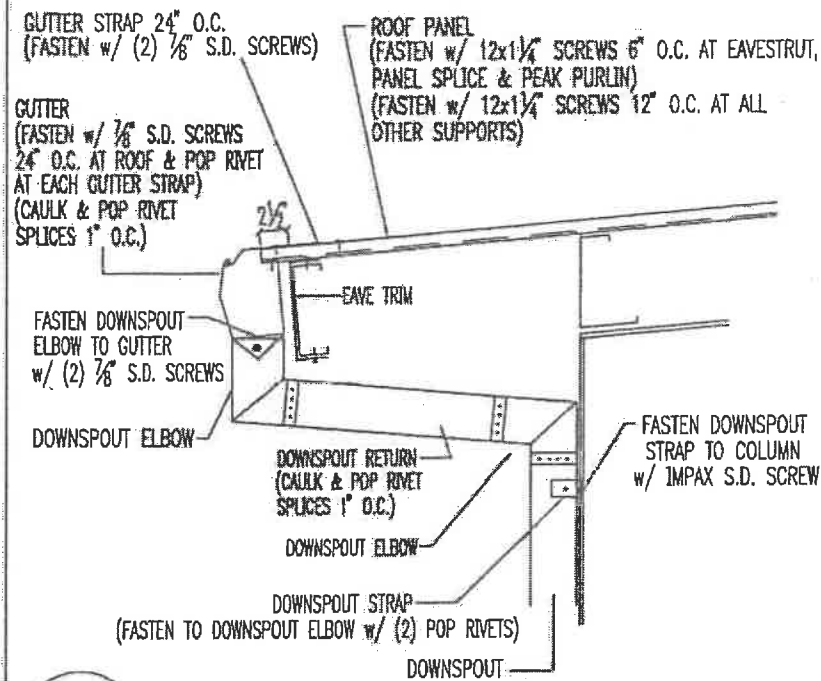
C1 Corner Detail



C5 Corner Detail

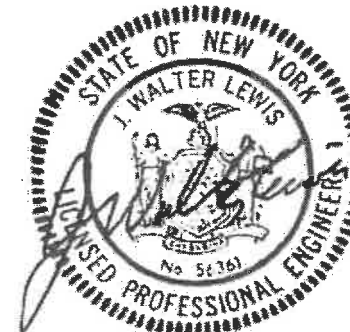


E75 Sidewall Roof Extension



E79 Sidewall Roof Extension

For Permit Purposes Only



05/02/17

THIS ENGINEERING SEAL APPLIES ONLY TO THE STRUCTURAL DESIGN OF PROPERLY INSTALLED MATERIALS THAT ARE FABRICATED AND DESIGNED BY THE METAL BUILDING MANUFACTURER (M.B.M.). ANY MATERIAL NOT DESIGNED OR NOT FABRICATED BY THE M.B.M. IS SPECIFICALLY EXCLUDED. THE LICENSED PROFESSIONAL ENGINEER WHOSE SEAL APPEARS ON THESE DRAWINGS IS EMPLOYED BY THE M.B.M., AND IS NOT THE ENGINEER OF RECORD FOR THIS PROJECT.

REV. NO.	BY	DATE
1		

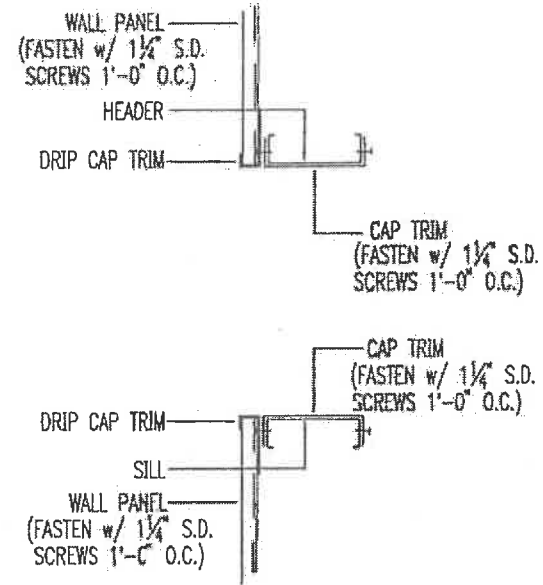
CUSTOMER	INDEPENDENCE STEEL 116 SOLLER HEIGHTS RD. GHENT, NY 12075
PROJECT/SITE INFO.	WES COON N. 7775 ALBANY POST RD. RED HOOK, NY 12571

DESIGNED BY	
DRAWN BY	KJM
DATE	4/28/17
DWG CHK BY	
DATE	
SCALE:	NOT TO SCALE
FILE ID:	4988

INDEPENDENCE
STEEL SUPPLY, L.L.C.

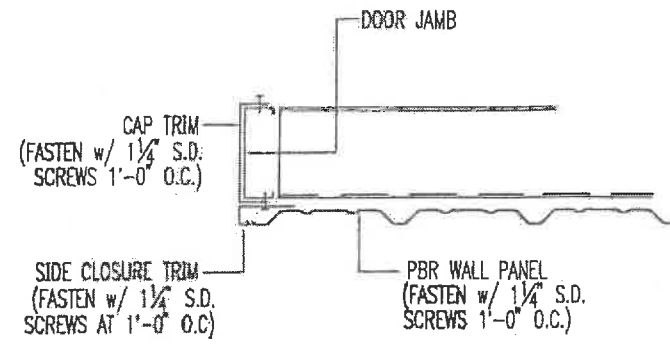
SHEET NUMBER	D4 OF 12
JOB NUMBER	4988

4988_D4_DWG-4

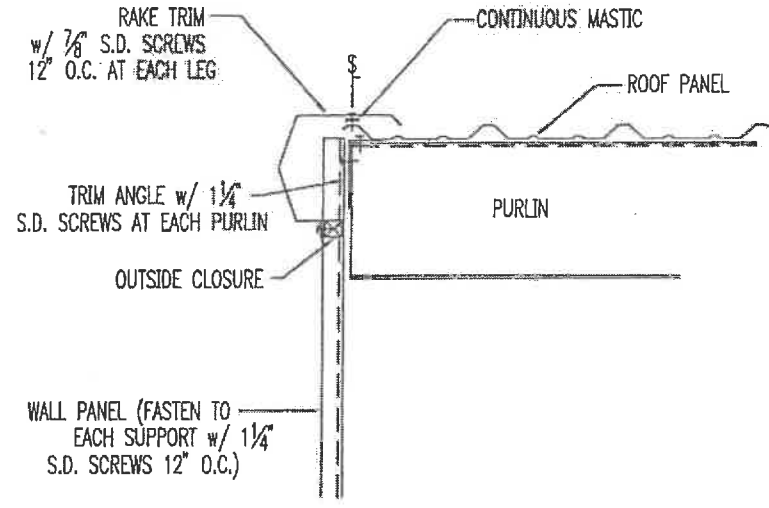


SECTION THROUGH FRAMED OPENING SILL (IF APPLICABLE)

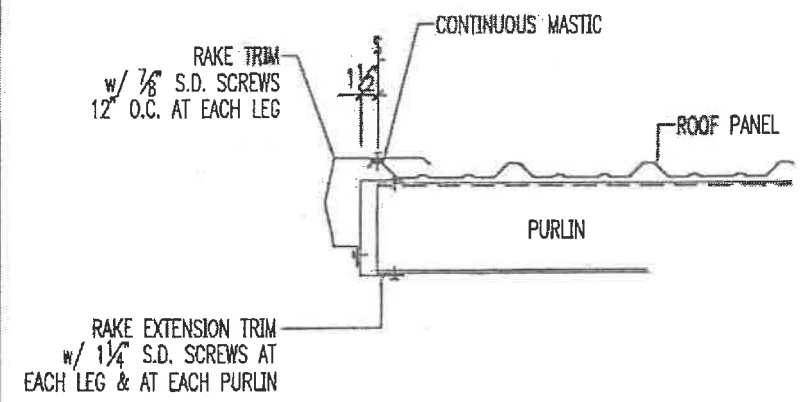
F10 Header/Sill Trim Detail



F12 Jamb Trim Detail

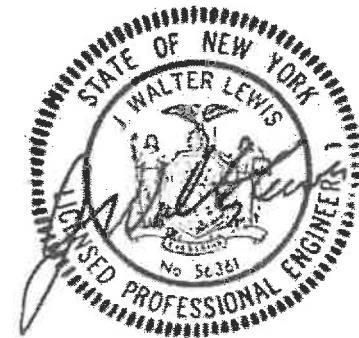


R1 Rake Detail



R4 Rake Detail

For Permit Purposes Only



05/02/17

THIS ENGINEERING SEAL APPLIES ONLY TO THE STRUCTURAL DESIGN OF PROPERLY INSTALLED MATERIALS THAT ARE FABRICATED AND DESIGNED BY THE METAL BUILDING MANUFACTURER (M.B.M.). ANY MATERIAL NOT DESIGNED OR NOT FABRICATED BY THE M.B.M. IS SPECIFICALLY EXCLUDED. THE LICENSED PROFESSIONAL ENGINEER WHOSE SEAL APPEARS ON THESE DRAWINGS IS EMPLOYED BY THE M.B.M., AND IS NOT THE ENGINEER OF RECORD FOR THIS PROJECT.

REV. NO.	BY	DATE
<<<<<<		

CUSTOMER	INDEPENDENCE STEEL
	116 SOLLER HEIGHTS RD.
	CHENT, NY 12075
PROJECT/SITE INFO.	WES COON
	N. 7775 ALBANY POST RD.
	RED HOOK, NY 12571

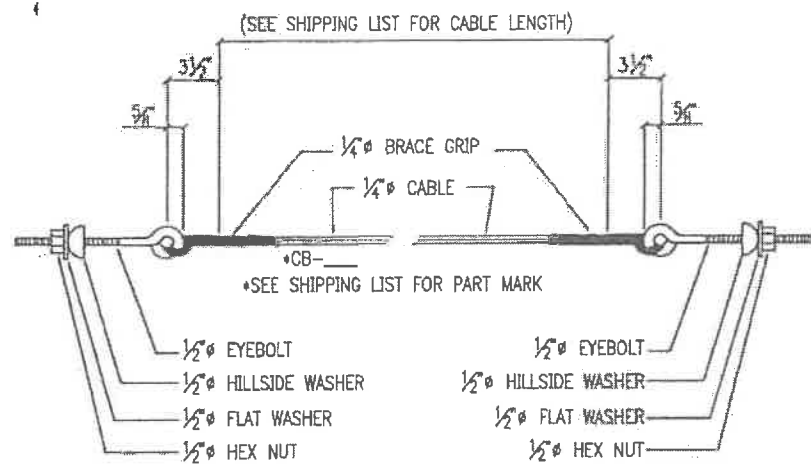
DESIGNED BY	
DRAWN BY	DATE
KJM	4/28/17
DWG CHK BY	DATE
SCALE:	NOT TO SCALE
FILE ID:	4988

INDEPENDENCE STEEL SUPPLY, LLC.

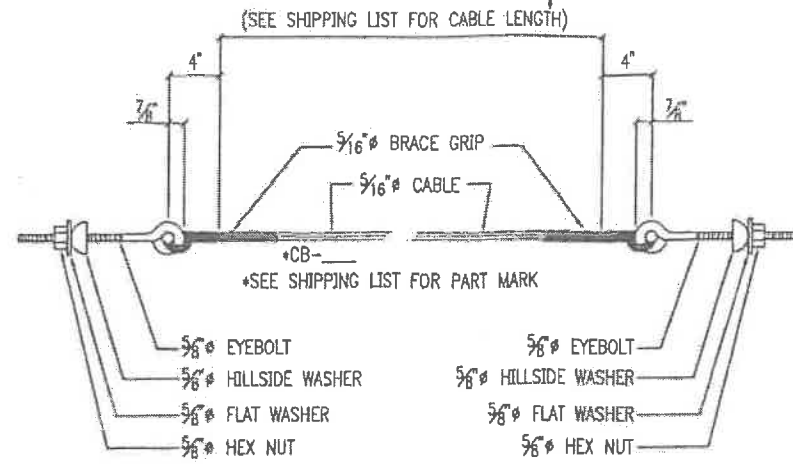
SHEET NUMBER	D5 OF 12
JOB NUMBER	4988

4988_DS_D10wg-5

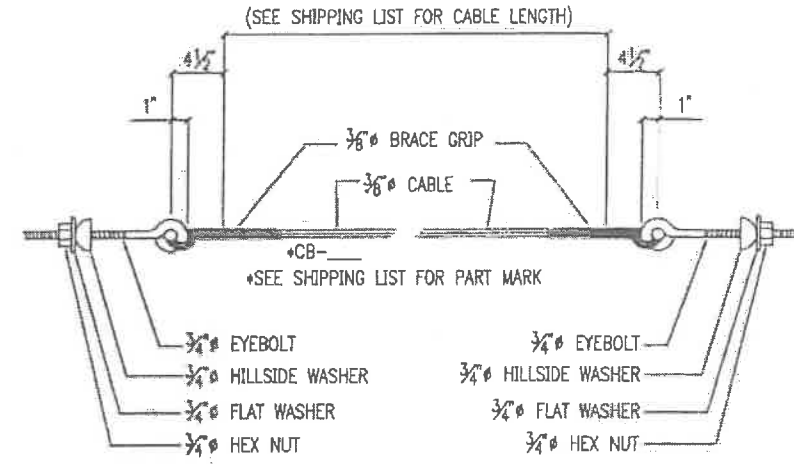
1



1/4"Ø CABLE BRACING



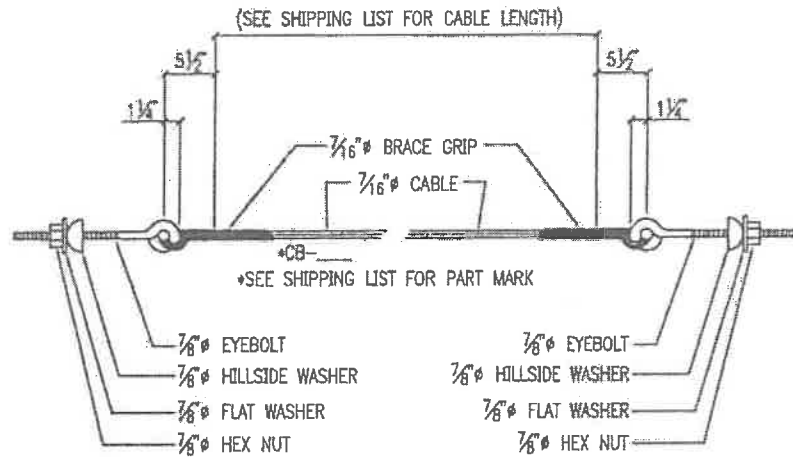
5/16"Ø CABLE BRACING



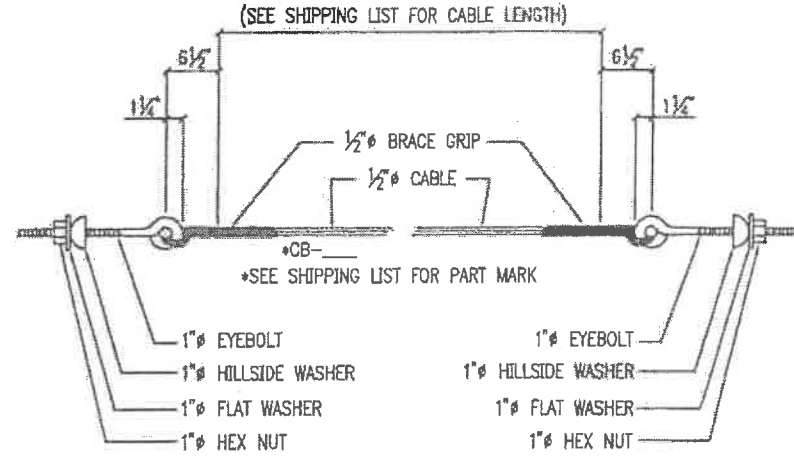
3/8"Ø CABLE BRACING

BRACE CABLE ASSEMBLY

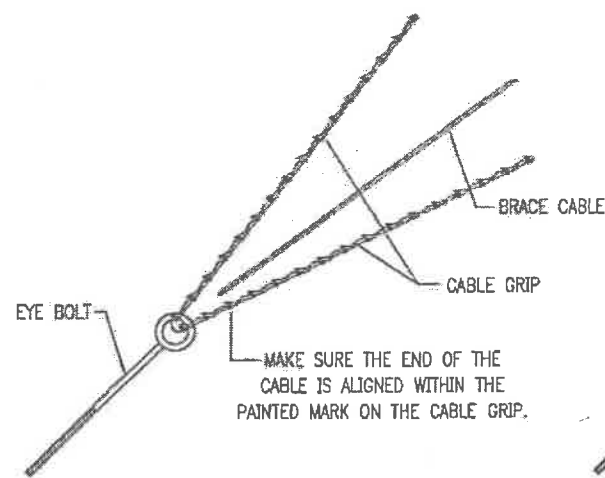
- 1) PLACE ONE LEG OF THE BRACE GRIP THROUGH THE EYE OF THE EYE BOLT. (SEE DETAIL "A")
- 2) ALIGN THE END OF THE CABLE. (SEE DETAIL "A")
- 3) WRAP THE FIRST LEG OF THE CABLE GRIP TWO FULL WRAPS AND VERIFY THAT CABLE END IS STILL IN CORRECT POSITION.
- 4) WRAP THE OPPOSITE LEG OF THE CABLE GRIP UNTIL IT IS EVEN WITH THE WRAPS OF THE FIRST LEG.
- 5) FINISH THE CABLE GRIP ASSEMBLY BY WRAPPING BOTH LEGS OUT TO THE ENDS. MAKE SURE THAT BOTH LEGS MESH EVENLY AROUND THE CABLE AND ARE FULLY SEATED.
- 6) PLACE THE EYE BOLT THROUGH THE FRAMING MEMBER AS SHOWN (SEE DETAIL "B"), AND ATTACH THE REQUIRED HARDWARE.



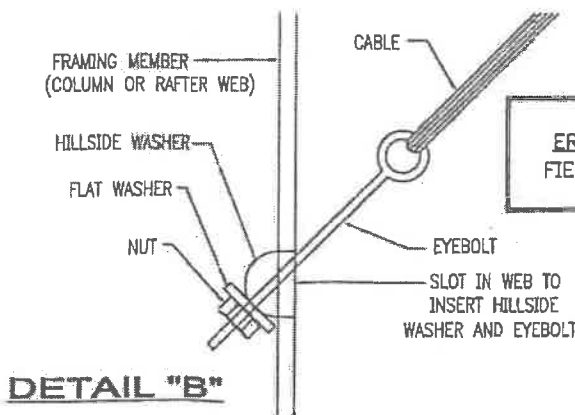
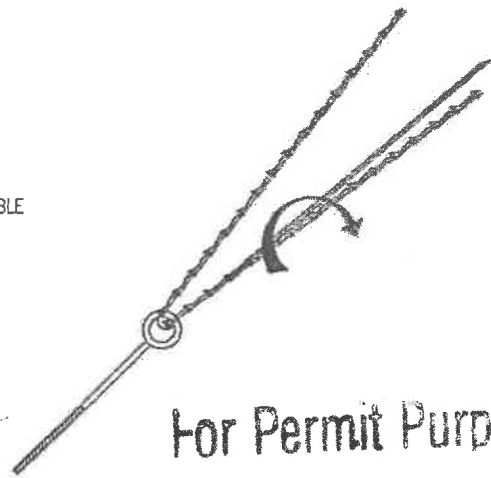
7/16"Ø CABLE BRACING



1/2"Ø CABLE BRACING



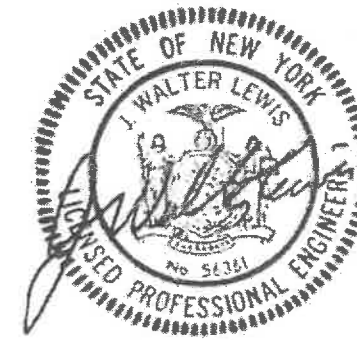
DETAIL "A"



DETAIL "B"

CABLE BRACING DETAILS

ERECTOR NOTE: IF CABLE IS IN THE GIRT LINE, FIELD SLOTTING OF THE GIRTS WILL BE REQUIRED.



05/02/17

THIS ENGINEERING SEAL APPLIES ONLY TO THE STRUCTURAL DESIGN OF PROPERLY INSTALLED MATERIALS THAT ARE FABRICATED AND DESIGNED BY THE METAL BUILDING MANUFACTURER (M.B.M.). ANY MATERIAL NOT DESIGNED OR NOT FABRICATED BY THE M.B.M. IS SPECIFICALLY EXCLUDED. THE LICENSED PROFESSIONAL ENGINEER WHOSE SEAL APPEARS ON THESE DRAWINGS IS EMPLOYED BY THE M.B.M., AND IS NOT THE ENGINEER OF RECORD FOR THIS PROJECT.

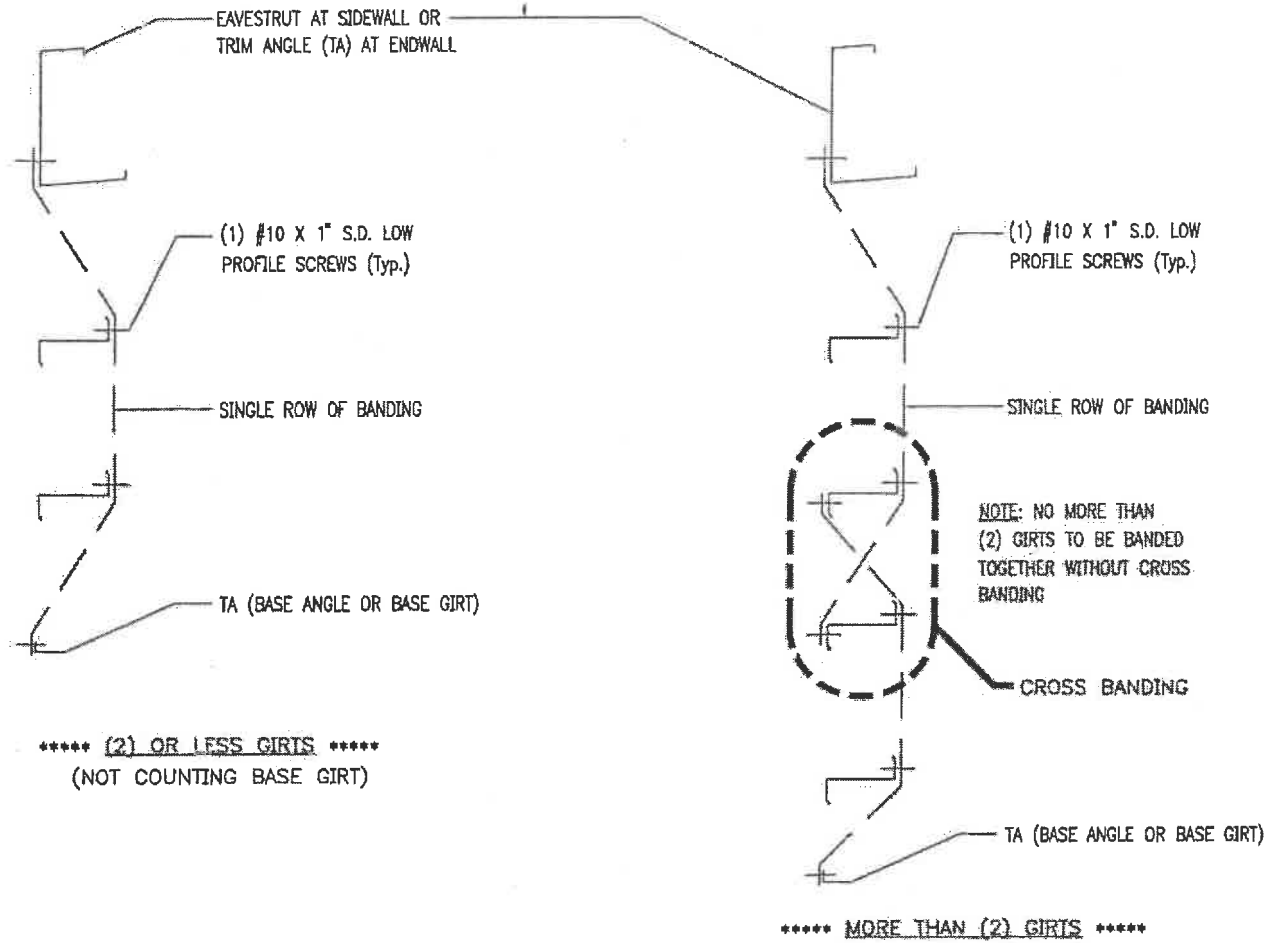
DATE	
REV. NO. BY	←←←←←
DESCRIPTION	4988_DT_CABLE

CUSTOMER	INDEPENDENCE STEEL 116 SOLLER HEIGHTS RD. GHENT, NY 12075
PROJECT/SITE INFO.	WES COON N. 775 ALBANY POST RD. RED HOOK, NY 12571

DESIGNED BY	
DRAWN BY	KJM
DATE	5/2/17
DWG CHK BY	
DATE	
SCALE:	NOT TO SCALE
FILE ID:	4988

INDEPENDENCE
STEEL SUPPLY, L.L.C.

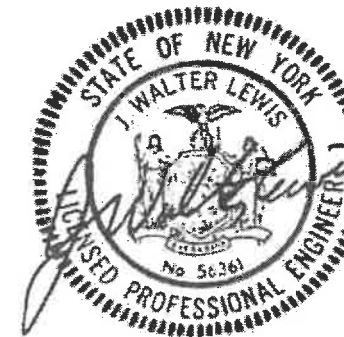
SHEET NUMBER	D7 OF 12
JOB NUMBER	4988



PANELED WALL CONDITION

For Permit Purposes Only

**BANDING
DETAILS**



05/02/17

THIS ENGINEERING SEAL APPLIES ONLY TO THE STRUCTURAL DESIGN OF PROPERLY INSTALLED MATERIALS THAT ARE FABRICATED AND DESIGNED BY THE METAL BUILDING MANUFACTURER (M.B.M.). ANY MATERIAL NOT DESIGNED OR NOT FABRICATED BY THE M.B.M. IS SPECIFICALLY EXCLUDED. THE LICENSED PROFESSIONAL ENGINEER WHOSE SEAL APPEARS ON THESE DRAWINGS IS EMPLOYED BY THE M.B.M., AND IS NOT THE ENGINEER OF RECORD FOR THIS PROJECT.

REV. NO.	BY	DATE
1		

DESCRIPTION
4988_DB_BANDING

CUSTOMER INDEPENDENCE STEEL 116 SOLLER HEIGHTS RD. GHENT, NY 12075	PROJECT/SITE INFO. WES COON N. 7775 ALBANY POST RD. RED HOOK, NY 12571
DESIGNED BY	
DRAWN BY KJM	DATE 5/2/17
DWC CHK BY	DATE
SCALE: NOT TO SCALE	
FILE ID: 4988	

**INDEPENDENCE
STEEL SUPPLY, LLC.**

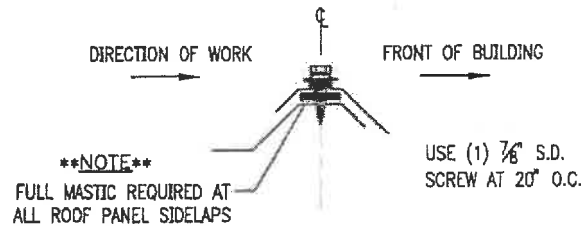
SHEET NUMBER DB OF 12
JOB NUMBER 4988

ROOF PANEL INSTALLATION NOTES:

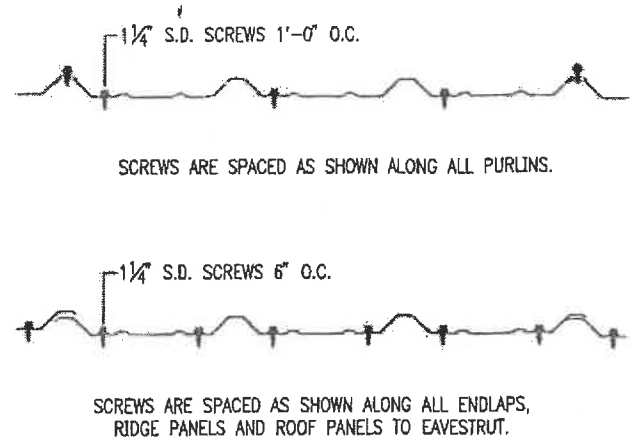
- 1.) TO INSTALL ROOF PANELS BEGIN AT THE EAVE AND WORK TOWARD THE RIDGE.
- 2.) INSTALL BOTH SIDES OF THE ROOF AND THE RIDGE CAP BEFORE PROCEEDING TO THE NEXT RUN OF PANELS. USE RIDGE CAP FOR ALIGNMENT. INSTALL ROOF MASTIC AT ALL ROOF PANEL SIDELAPS.

****NOTE****

ROOFS WITH INSULATION THICKNESS GREATER THAN 4 1/2" DO NOT MEET UL90 SPECIFICATIONS.



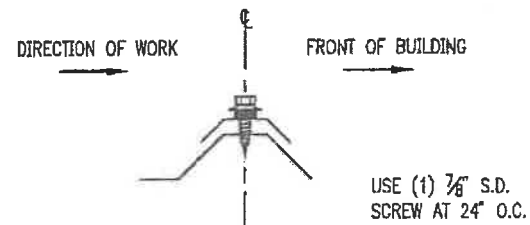
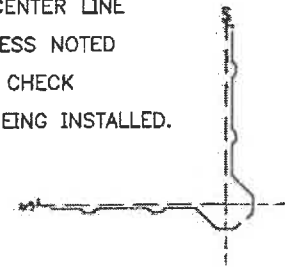
ROOF LAP DETAIL



(PBR) ROOF PANEL INSTALLATION

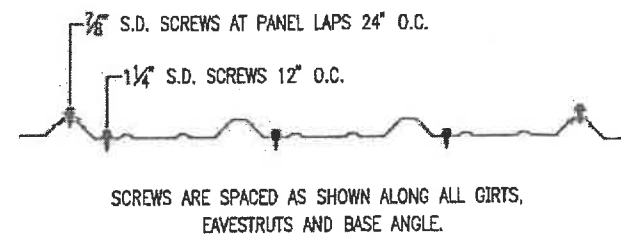
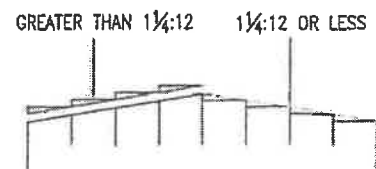
WALL PANEL INSTALLATION NOTES:

- 1.) BEGIN PANELING FROM THE REAR OF THE BUILDING SO LAPS WILL NOT BE VISIBLE FROM THE FRONT OF THE BUILDING.
- 2.) FASTEN FIRST PANEL AT CORNER WITH CENTER LINE OF FIRST RIB LOCATED AS SHOWN UNLESS NOTED OTHERWISE ON SHEETING ELEVATIONS. CHECK VERTICAL ALIGNMENT AS PANELS ARE BEING INSTALLED.

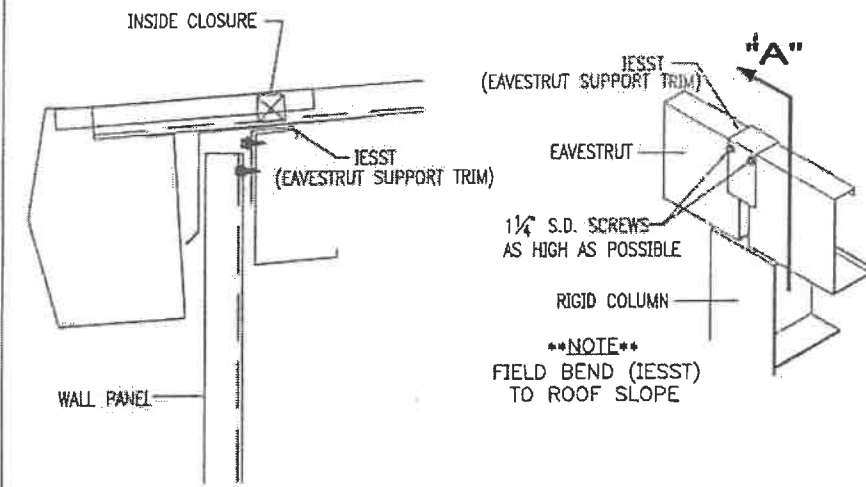


WALL LAP DETAIL

- 3.) CUT AND TRIM OPENINGS FOR DOORS & WINDOWS AS REQUIRED.
- 4.) ENDWALL PANELS ON BUILDINGS HAVING A ROOF SLOPE 1 1/4:12 OR LESS DO NOT HAVE TO BE FIELD CUT. ENDWALL PANELS ON BUILDINGS HAVING A ROOF SLOPE GREATER THAN 1 1/4:12 MUST BE FIELD CUT TO THE SLOPE OF THE ROOF.

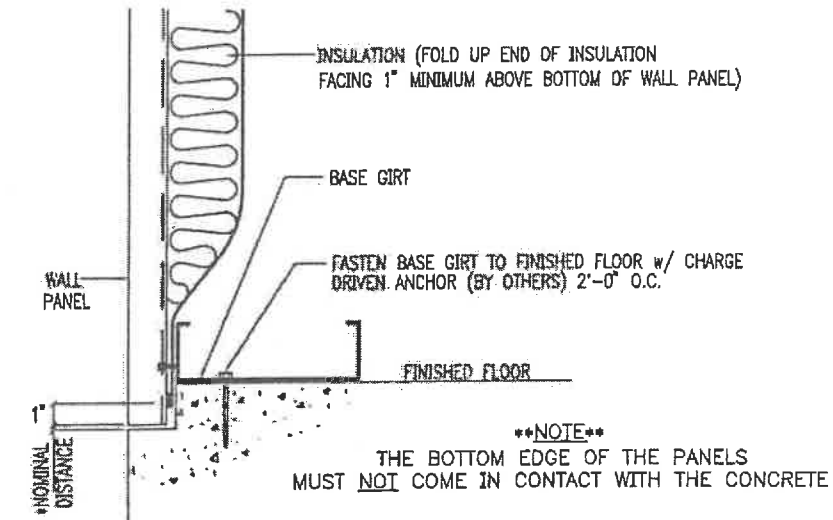


For Permit Purposes Only
(PBR) WALL PANEL INSTALLATION

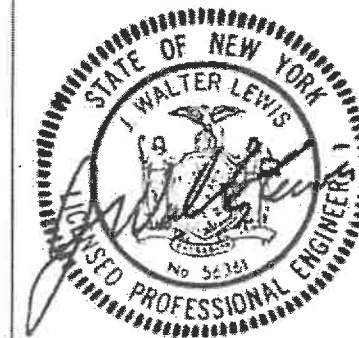


SECTION "A"

EAVESTRUT SPLICE TRIM DETAIL



C-GIRT ON SLAB DETAIL



05/02/17

THIS ENGINEERING SEAL APPLIES ONLY TO THE STRUCTURAL DESIGN OF PROPERLY INSTALLED MATERIALS THAT ARE FABRICATED AND DESIGNED BY THE METAL BUILDING MANUFACTURER (M.B.M.). ANY MATERIAL NOT DESIGNED OR NOT FABRICATED BY THE M.B.M. IS SPECIFICALLY EXCLUDED. THE LICENSED PROFESSIONAL ENGINEER WHOSE SEAL APPEARS ON THESE DRAWINGS IS EMPLOYED BY THE M.B.M., AND IS NOT THE ENGINEER OF RECORD FOR THIS PROJECT.

DESCRIPTION	REV. NO.	BY	DATE
	1		

CUSTOMER:
INDEPENDENCE STEEL
116 SOLLER HEIGHTS RD.
GHENT, NY 12075

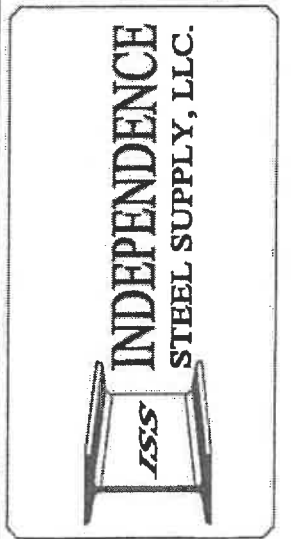
PROJECT/SITE INFO:
WES COON
N. 7775 ALBANY POST RD.
RED HOOK, NY 12571

DESIGNED BY

DRAWN BY KJM **DATE** 5/2/17

DWG CHK BY **DATE**

SCALE: NOT TO SCALE
FILE ID: 4988



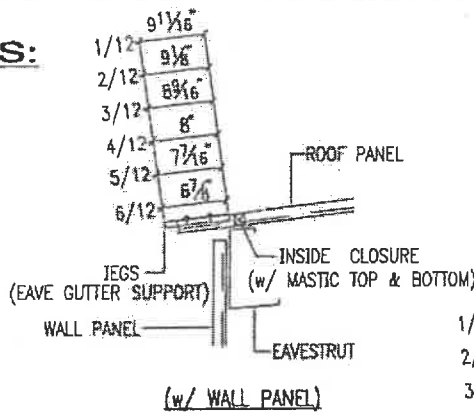
SHEET NUMBER
D9 OF 12

JOB NUMBER
4988

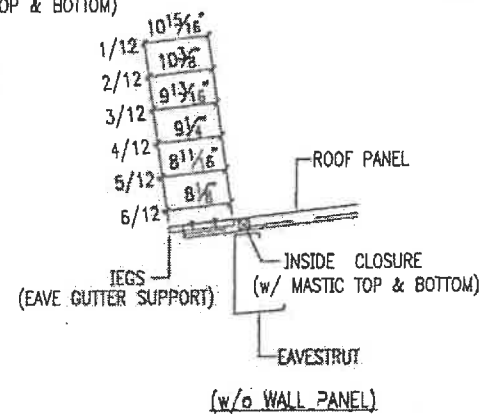
4988_D9_PNL_INSTALL.TA

ERECTION PROCEDURES:

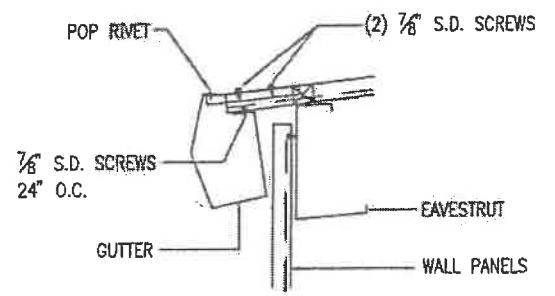
- 1.) FASTEN IEGS GUTTER SUPPORTS TO MAJOR RIB OF ROOF PANEL 24" O.C. w/ (2) 7/8" S.D. SCREWS. ALLOW SUPPORTS TO OVERHANG PANELS SHOWN. (SEE DETAIL "A")
- 2.) BEFORE HANGING GUTTER FIELD CUT "X" AT DOWNSPOUT LOCATION (SEE DETAIL "B").
- 3.) WORKING FROM THE REAR OF THE BUILDING, PLACE TOP LIP OF GUTTER OVER SUPPORTS AND AGAINST BOTTOM OF ROOF PANEL. LOCATE SO THAT THE END OF THE GUTTER IS EXTENDED 1" PAST THE OUTSIDE CORNER TRIM. FASTEN AS SHOWN. (SEE DETAIL "C")
- 4.) ATTACH GUTTER TO EDGE OF ROOF PANEL 24" O.C. w/ 7/8" S.D. SCREWS. (SEE DETAIL "D")
- 5.) HANG REMAINDER OF GUTTER USING TUBE CAULKING AND POP RIVETS AT ALL JOINTS AND AT ENDCAPS 1" O.C. (SEE DETAIL "E")
- 6.) ATTACH IDSD (DOWNSPOUT DIVERTER) TO THE BASE OF IDWD (DOWNSPOUT) w/(6) POP RIVETS (VOID IF IDS (DOWNSPOUT WITH BUILT-IN KICKOUT) IS USED IN LIEU OF DIVERTER). (SEE DETAIL "F")
- 7.) PLACE IDWD (DOWNSPOUT) OVER TABS AGAINST BOTTOM OF GUTTER AND FASTEN w/ (2) 7/8" S.D. SCREWS. (SEE DETAIL "G")
- 8.) SECURE IDWD (DOWNSPOUT) TO WALL WITH IDSS (DOWNSPOUT STRAPS). (SEE THE DOWNSPOUT SCHEDULE ON THE ERECTION DRAWINGS FOR QUANTITY AND LOCATION). SECURE THE IDSS (DOWNSPOUT STRAPS) TO THE WALL PANELS w/ (1) 7/8" S.D. SCREW AND THE IDWD TO IDSS w/ (2) POP RIVETS. (SEE DETAIL "H")



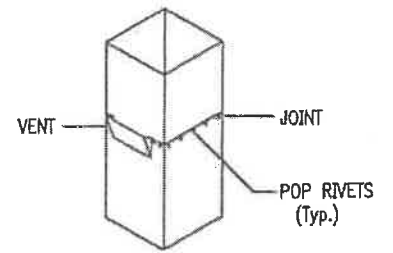
DETAIL "A"



DETAIL "D"



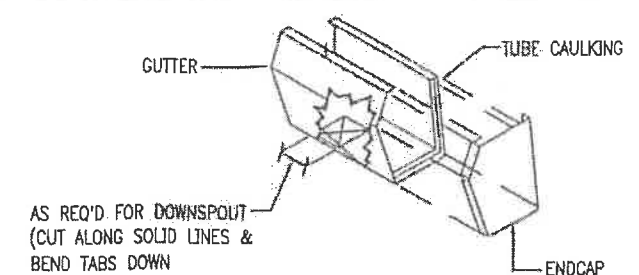
DETAIL "D"



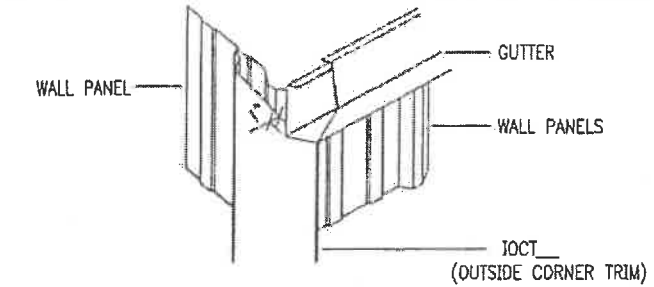
DOWNSPOUT VENT DETAIL

****ERECTOR NOTES****

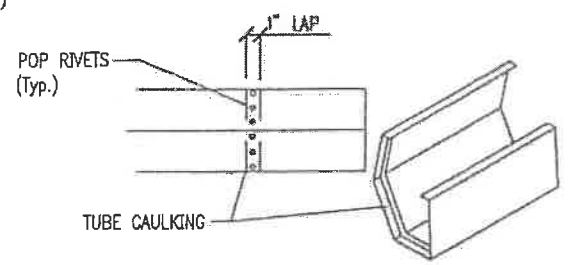
- 1.) DOWNSPOUTS MUST BE VENTED ONCE EVERY 40 FEET OF LENGTH
- 2.) AT A JOINT, FORM A VENT BY SNIPPING AND FOLDING BACK ONE OF THE FEMALE SIDES OF THE DOWNSPOUT (SEE ABOVE)



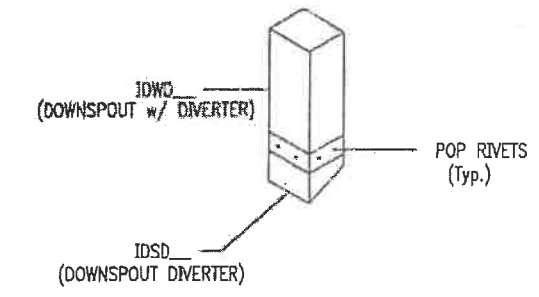
DETAIL "B"



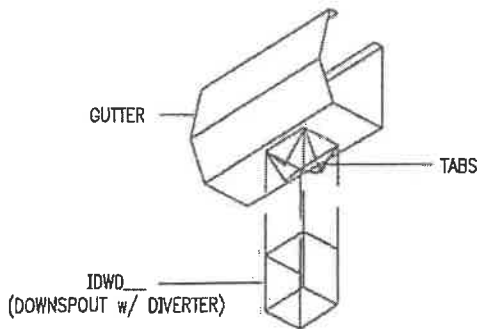
DETAIL "C"



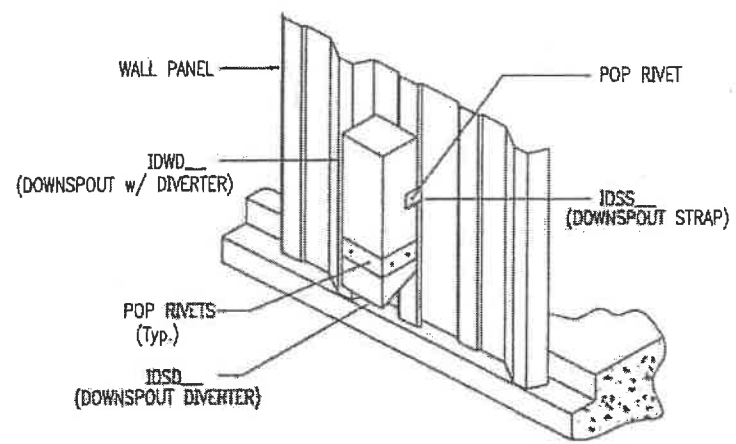
DETAIL "E"



DETAIL "F"



DETAIL "G"



DETAIL "H"

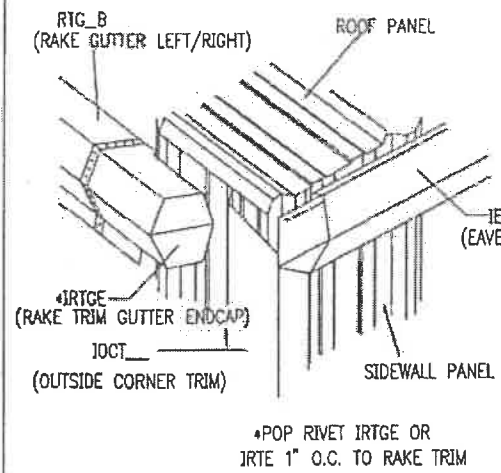
For Permit Purposes Only
GUTTER & DOWNSPOUT ATTACHMENT



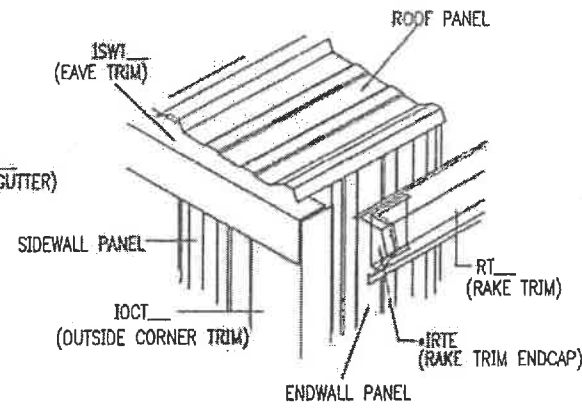
05/02/17

THIS ENGINEERING SEAL APPLIES ONLY TO THE STRUCTURAL DESIGN OF PROPERLY INSTALLED MATERIALS THAT ARE FABRICATED AND DESIGNED BY THE METAL BUILDING MANUFACTURER (M.B.M.). ANY MATERIAL NOT DESIGNED OR NOT FABRICATED BY THE M.B.M. IS SPECIFICALLY EXCLUDED. THE LICENSED PROFESSIONAL ENGINEER WHOSE SEAL APPEARS ON THESE DRAWINGS IS EMPLOYED BY THE M.B.M., AND IS NOT THE ENGINEER OF RECORD FOR THIS PROJECT.

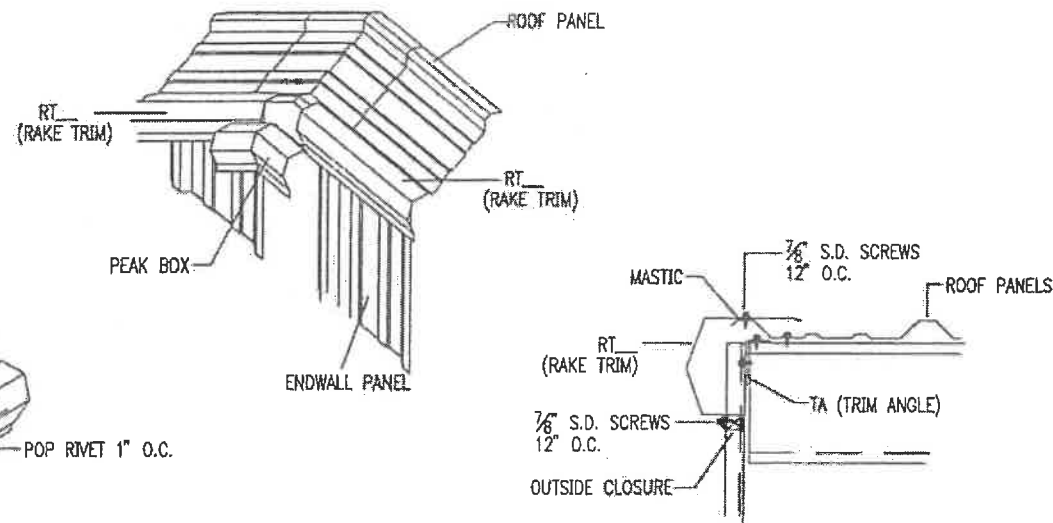
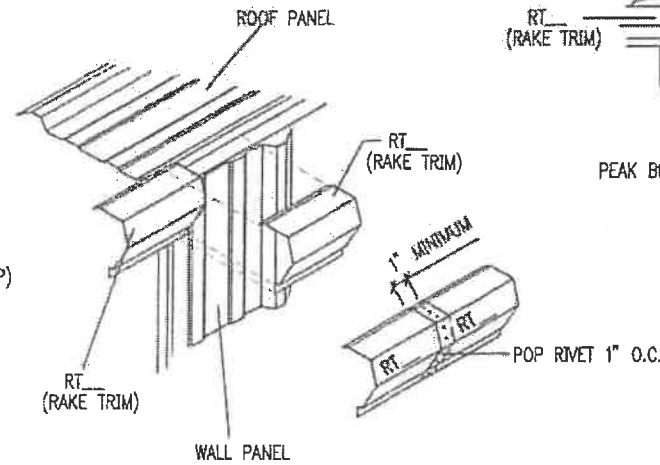
DESCRIPTION	DATE	REV. NO.	BY
4988_D10_GUTTER			
<p>CUSTOMER: INDEPENDENCE STEEL, 116 SOLLER HEIGHTS RD., GHENT, NY 12075</p> <p>PROJECT/SITE INFO: WES COON, N. 7775 ALBANY POST RD., RED HOOK, NY 12571</p>			
DESIGNED BY			
DRAWN BY: KJM		DATE: 5/2/17	
DWG CHK BY		DATE	
SCALE: NOT TO SCALE			
FILE ID: 4988			
<p>INDEPENDENCE STEEL SUPPLY, LLC.</p>			
SHEET NUMBER: D10 OF 12			
JOB NUMBER: 4988			



w/ GUTTER



w/ EAVE TRIM

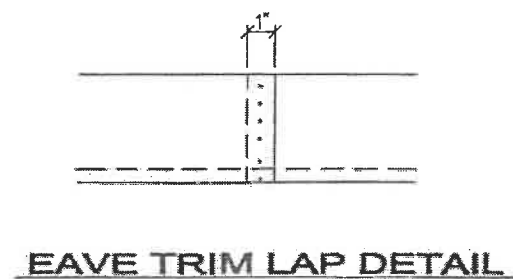
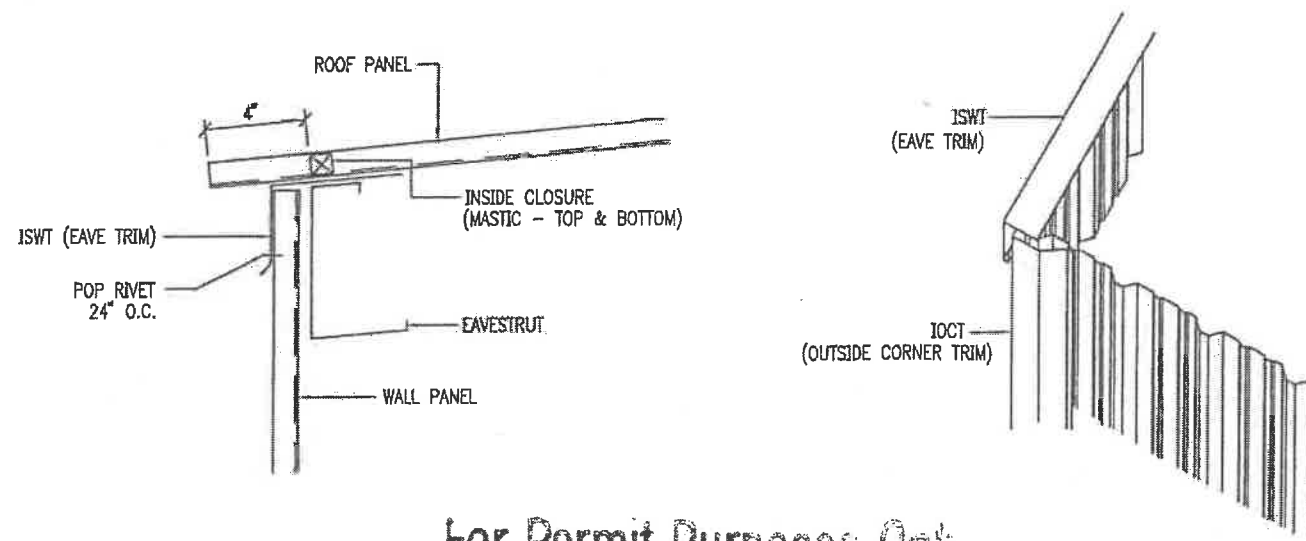


RAKE TRIM INSTALLATION NOTES:

- 1.) BEGIN BY INSTALLING EAVE GUTTER. POSITION RAKE GUTTER (LEFT/RIGHT) OVER ROOF PANELS AND AGAINST ENDWALL PANELS, MATING TO EAVE GUTTER. LOOSELY FASTEN EACH END TO ROOF PANELS WITH $\frac{7}{8}$ " S.D. SCREWS.
- 2.) BEGIN INSTALLATION AT CORNER USING RAKE TRIM WITH RAKE TRIM ENDCAP INSTALLED, POSITION OVER ROOF PANELS AND AGAINST ENDWALL PANELS. BUTT CORNER CAP WITH EAVE TRIM AND LOOSELY FASTEN EACH END TO ROOF PANELS WITH $\frac{7}{8}$ " S.D. SCREWS.
- 3.) WORK UP THE SLOPE FROM BOTH SIDES LAPPING RAKE TRIM A MINIMUM OF 1". LOOSELY FASTEN ENDS TO ROOF PANEL WITH $\frac{7}{8}$ " S.D. SCREWS AS WORK PROGRESSES.
- 4.) PLACE PEAK BOX OVER RAKE TRIM. ALIGN AND ATTACH WITH $\frac{7}{8}$ " S.D. SCREWS.
- 5.) USE EAVE GUTTER BOX AND PEAK BOX AS STATION POINTS TO ALIGN RAKE TRIM. INSERT OUTSIDE CLOSURE & MASTIC AS SHOWN. AFTER ALIGNMENT IS MADE, FASTEN RAKE TRIM SECURELY USING $\frac{7}{8}$ " S.D. SCREWS AT EACH LEG. STITCH RAKE TRIM LAPS WITH POP RIVETS 1" O.C..

EAVE TRIM INSTALLATION NOTES:

- 1.) WORKING FROM THE REAR OF THE BUILDING, PLACE EAVE TRIM FLUSH WITH THE CORNER TRIM TO INSURE A PROPER FIT WITH THE RAKE TRIM.
- 2.) PLACE EAVE TRIM TO FIT SNUG INTO POSITION AND FASTEN WITH POP RIVETS AT 24" O.C.
- 3.) LAP EAVE TRIM A MINIMUM OF 1" AND FASTEN WITH POP RIVETS 1" O.C.



EAVE TRIM LAP DETAIL

For Permit Purposes Only

RAKE & EAVE TRIM INSTALLATION



05/02/17

THIS ENGINEERING SEAL APPLIES ONLY TO THE STRUCTURAL DESIGN OF PROPERLY INSTALLED MATERIALS THAT ARE FABRICATED AND DESIGNED BY THE METAL BUILDING MANUFACTURER (M.B.M.). ANY MATERIAL NOT DESIGNED OR NOT FABRICATED BY THE M.B.M. IS SPECIFICALLY EXCLUDED. THE LICENSED PROFESSIONAL ENGINEER WHOSE SEAL APPEARS ON THESE DRAWINGS IS EMPLOYED BY THE M.B.M., AND IS NOT THE ENGINEER OF RECORD FOR THIS PROJECT.

DESCRIPTION	DATE	1
REV. NO.	BY	
CUSTOMER		
INDEPENDENCE STEEL		
116 SOLLER HEIGHTS RD.		
CHENY, NY 12075		
PROJECT/SITE INFO.		
WES COON		
N. 7775 ALBANY POST RD.		
RED HOOK, NY 12571		
DESIGNED BY		
DRAWN BY		
DATE		
KJM 5/2/17		
DWG CHK BY		
DATE		
SCALE: NOT TO SCALE		
FILE ID: 4988		
SHEET NUMBER		
D11 OF 12		
JOB NUMBER		
4988		



