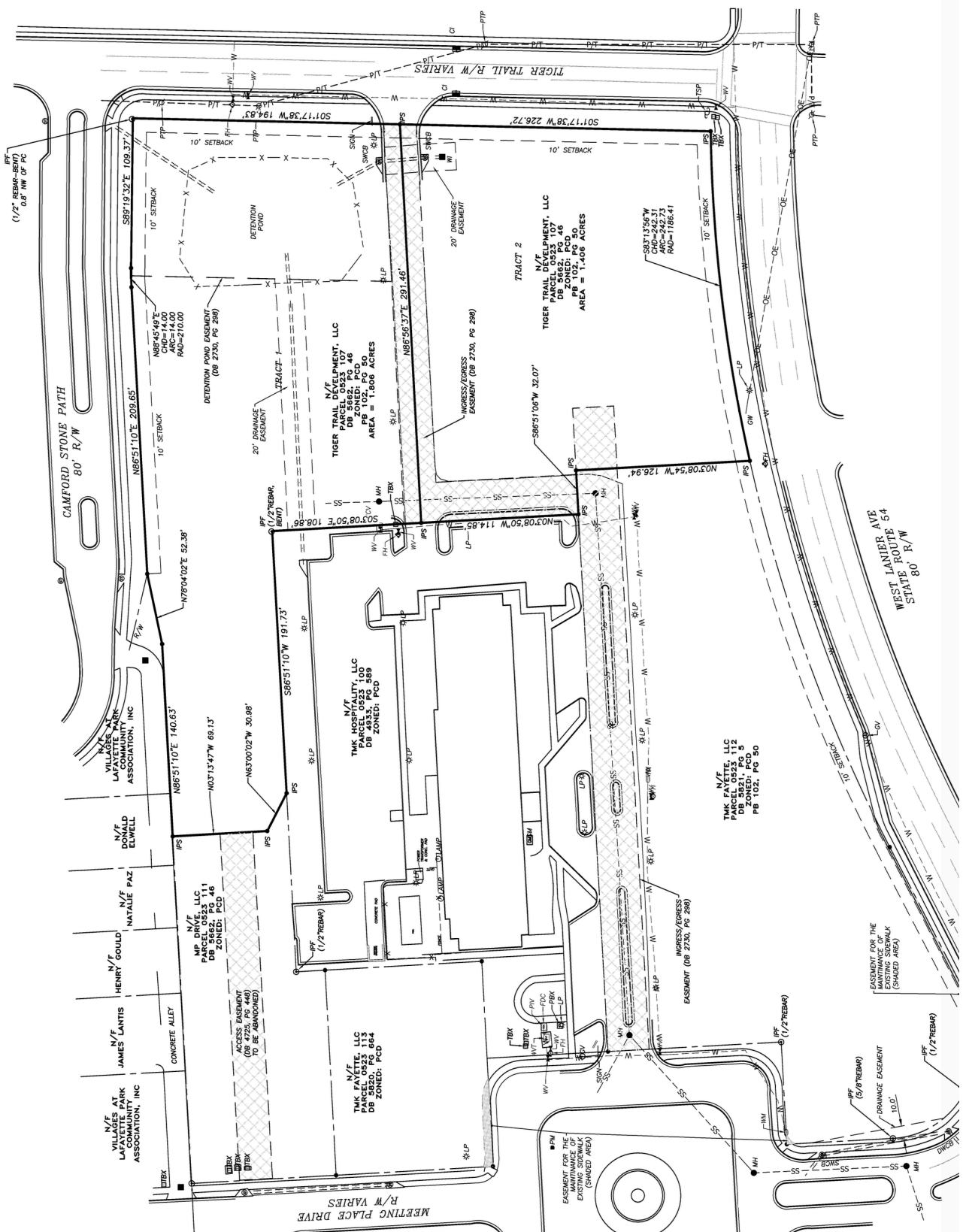


THIS BLOCK RESERVED FOR THE CLERK OF THE SUPERIOR COURT



(1/2" REBAR) 0.8' NW OF FC

(1/2" REBAR)

(1/2" REBAR)

(1/2" REBAR)

(1/2" REBAR)

(1/2" REBAR)

(1/2" REBAR)

(1/2" REBAR)

(1/2" REBAR)

(1/2" REBAR)

(1/2" REBAR)

(1/2" REBAR)

(1/2" REBAR)

(1/2" REBAR)

(1/2" REBAR)

(1/2" REBAR)

(1/2" REBAR)