

1228 CAMP JACKSON ROAD  
CAHOKIA, IL 62206



**GATEWAY**  
COMMERCIAL REAL ESTATE  
INDEPENDENTLY OWNED AND OPERATED

RETAIL FOR SALE

1,315 SF BUILDING AVAILABLE

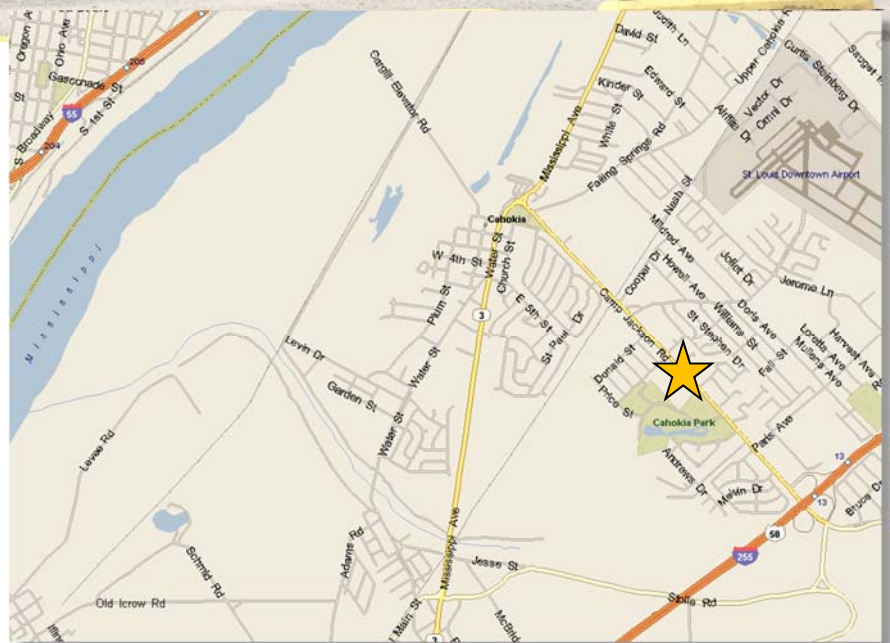
EXCELLENT LOCATION



## PROPERTY FEATURES

- 1,315 SF former Popeye's restaurant
- 0.529 AC lot
- Good condition
- Highly visible
- Some remaining FF&E available
- Dedicated pylon signage along Camp Jackson Road

**SALE PRICE: \$270,000**



For more information, please contact:

ADAM GLOSIER, CCIM

Director - Retail

(314) 584 6225

aglosier@gateway-commercial.com

CUSHMAN & WAKEFIELD | GATEWAY COMMERCIAL

101 South Hanley Road, Suite 1400

St. Louis, MO 63105

(314) 863 4447

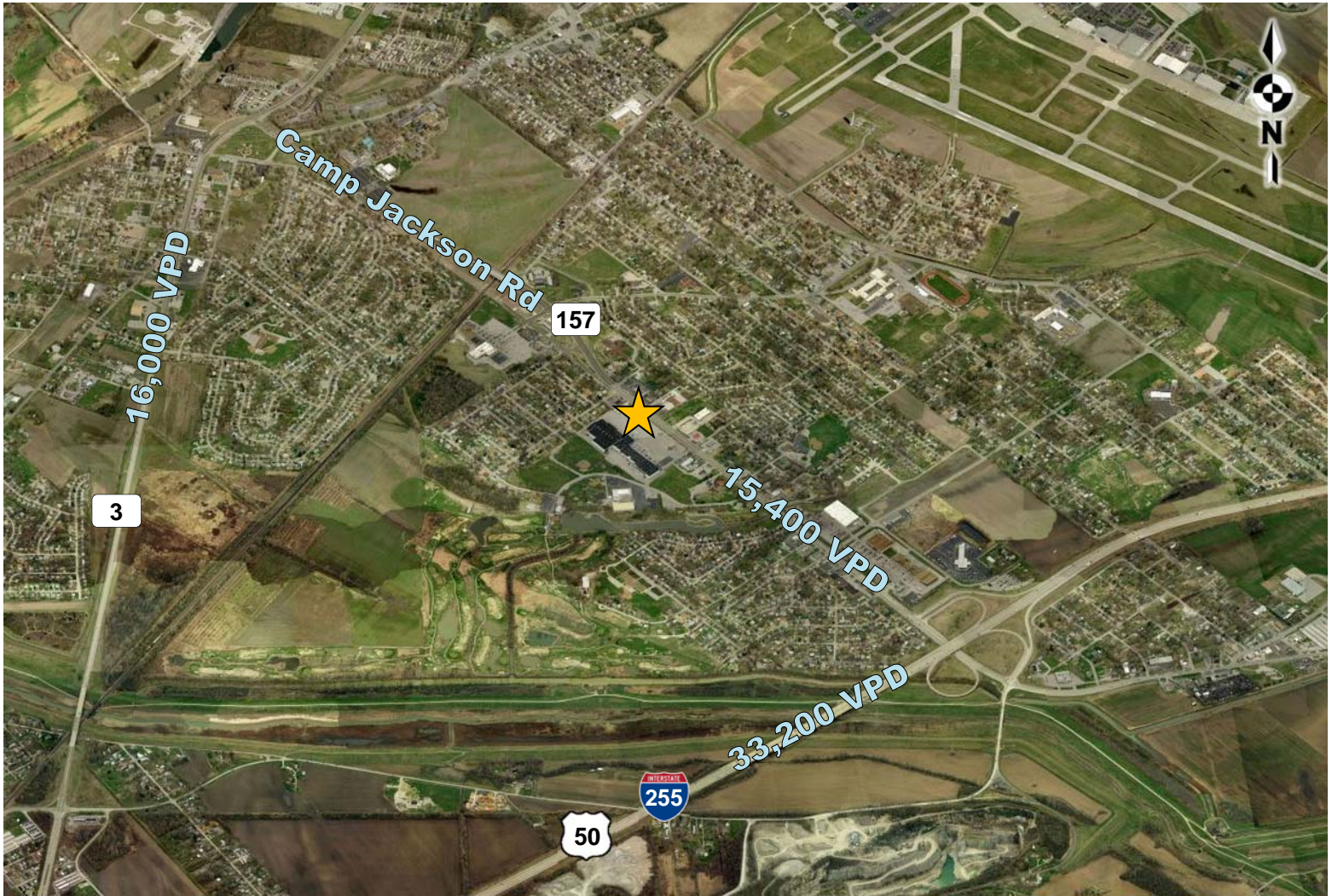
www.gateway-commercial.com

No warranty or representation, express or implied, is made as to the accuracy of the information contained herein, and same is submitted subject to errors omissions, change of price, rental or other conditions, withdrawal without notice, and to any specific listing conditions, imposed by our principals.

# 1228 CAMP JACKSON ROAD

Retail for Sale

1,315 SF  
FORMER RESTAURANT



### AREA RETAILERS INCLUDE:



### DEMOGRAPHICS

	1 MILE	3 MILE	5 MILE
POPULATION	7,744	19,443	129,240
HH INCOME	\$43,095	\$44,503	\$43,663

For more information, please contact:

ADAM GLOSIER, CCIM

Director - Retail

(314) 584 6225

aglosier@gateway-commercial.com

CUSHMAN & WAKEFIELD | GATEWAY COMMERCIAL

101 South Hanley Road, Suite 1400

St. Louis, MO 63105

(314) 863 4447

www.gateway-commercial.com

No warranty or representation, express or implied, is made as to the accuracy of the information contained herein, and same is submitted subject to errors omissions, change of price, rental or other conditions, withdrawal without notice, and to any specific listing conditions, imposed by our principals.