



WESTCHASE CORPORATE PARK

11201-11331 RICHMOND AVE



DAN MEYER

danmeyer@mcmmanagement.com

meyercarrington.com

O: 713-668-2369

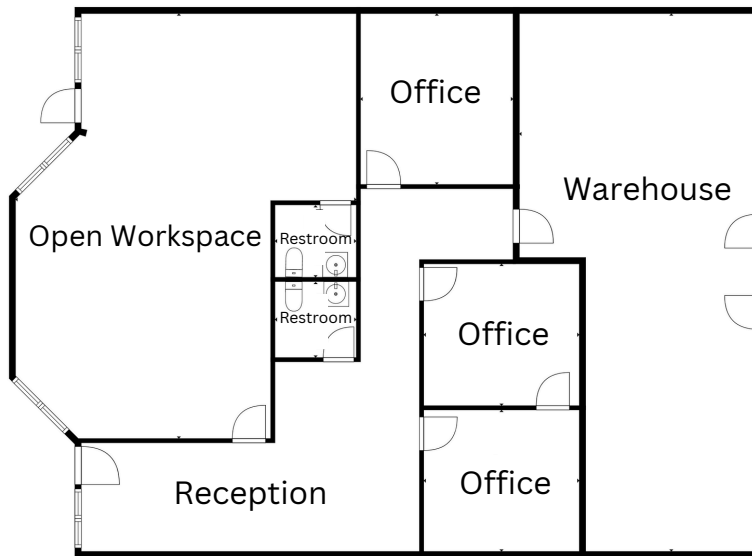
C: 713-806-8940

MEYER CARRINGTON



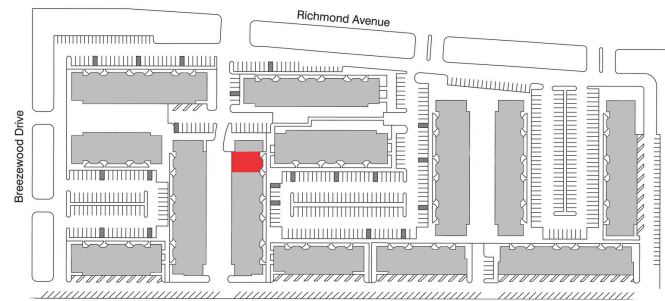
11261 RICHMOND AVE

**SUITE
G109-110
2,580 SF**



Suite Layout

- 2,580 SF
- Tenant controlled HVAC
- Drive up access
- 3 private offices
- 2 grade level overhead doors, rear load
- Conveniently located with direct access to Beltway 8 and Westpark Tollway



DAN MEYER

danmeyer@mcmanagement.com

meyercarrington.com

O: 713-668-2369

C: 713-806-8940

MEYER CARRINGTON