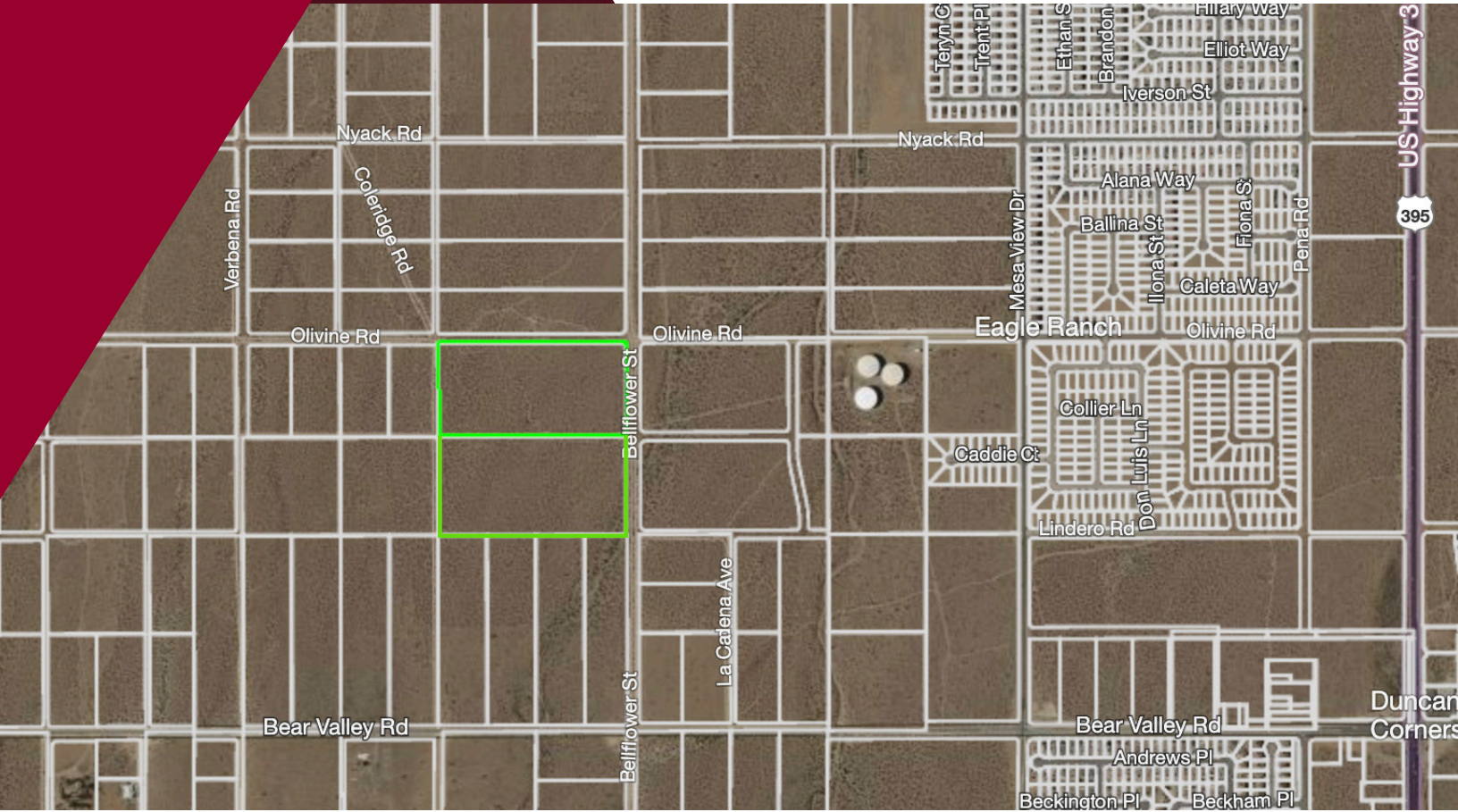


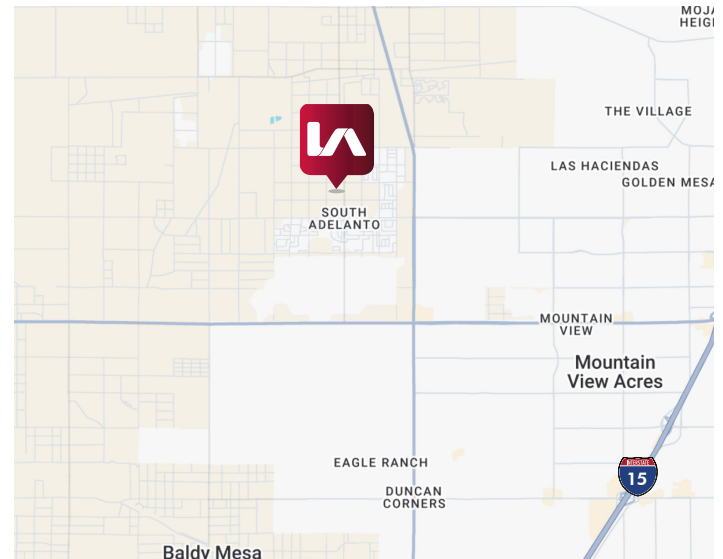
LOCAL EXPERTISE.  
INTERNATIONAL REACH.  
WORLD CLASS.

BELFLOWER ST | VICTORVILLE, CA



**PROPERTY FEATURES**

- 3133-291-03:
  - ±18.43 Acres
  - Zoned as R-1, Single Family Residential
- 3133-291-04:
  - ±19.36 Acres
  - Zoned as C-A, Administrative Professional Office
- Click to View [GIS Map/Zone Checker](#)
- Click to View [Allowed Uses](#)



For More Information, Contact:

**JUSTIN SMITH, SIOR**  
Senior Vice President  
CalBRE 01504494  
949.400.4786  
jbsmith@leeirvine.com

**GRANT LA BOUNTY**  
Vice President  
CalBRE 02086573  
562.310.2048  
glabounty@leeirvine.com

**CHRIS VASSILIAN**  
Senior Associate  
CalBRE 02191531  
949.422.8967  
cvassilian@leeirvine.com

**BEN KISLIUK**  
Sales & Leasing Agent  
CalBRE 02036531  
760.684.8306  
bkisliuk@lee-associates.com