

FOR LEASE

CARTER-COCHRAN BUILDINGS

6551-6573 Cochran Road, Solon, Ohio 44139



OFFICE & WAREHOUSE

2,700, 5,400 & 6,560 SF AVAILABLE

WELL MAINTAINED
APPEALING LANDSCAPE
NEW ROOF & WINDOWS

PROPERTY FEATURES



BUILDING A 6551-6571

56,400 SF

TOTAL BUILDING SIZE

BUILDING B 6573

56,400 SF

TOTAL BUILDING SIZE

\$6.50/SF NNN

WAREHOUSE LEASE RATE

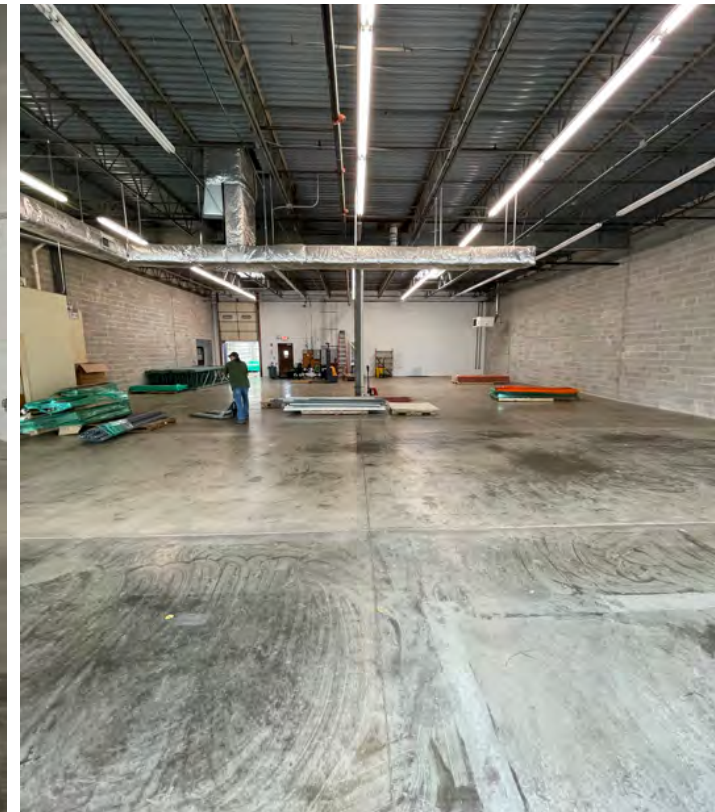
\$14.00/SF NNN

OFFICE LEASE RATE

COMMENTS

- Office/warehouse space available
- Well maintained property with appealing landscape, new windows and new roof
- Ready for immediate occupancy in the heart of the Solon industrial area
- Highly visible location just minutes from U.S. 422, I-480, I-271 with easy access (less than 30 minutes) to Cleveland Hopkins International Airport and both downtown Cleveland and Akron
- Situated in the middle of Solon's industrial community, the property is easily accessed from Twinsburg and Hudson to the south and Chagrin Falls, Pepper Pike, Orange and Beachwood to the north
- Minutes to shopping, hotels and restaurants

UNIT 6573 - SUITE 1 PHOTOS



PROPERTY 6573 FEATURES



PROPERTY SPECIFICATIONS

BUILDING B

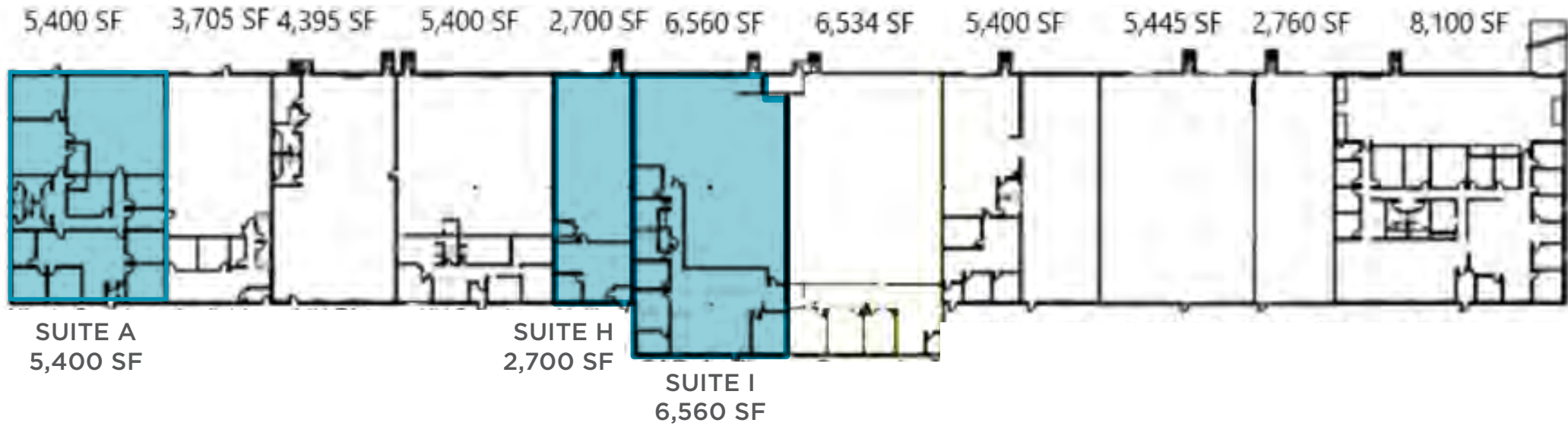
YEAR BUILT	1989
AVAILABLE	2,700, 5,400 & 6,560 SF
HVAC	24/7 tenant control
PARKING	Abundant
BUILDING HOURS/ACCESS	Tenant will have 24/7 access
TENANT SIGNAGE	Building signage and monument sign

CURRENT AVAILABILITY

SUITE	TOTAL SF	OFFICE SF	WHSE SF	DOCKS	DRIVE-IN DOORS	CLEAR HEIGHT
A	5,400 SF	3,400 SF	2,000 SF	One (1)	One (1)	16'
H	2,700 SF	900 SF	1,800 SF	One (1)	-0-	16'
I	6,560 SF	2,326 SF	4,234 SF	One (1)	-0-	16'

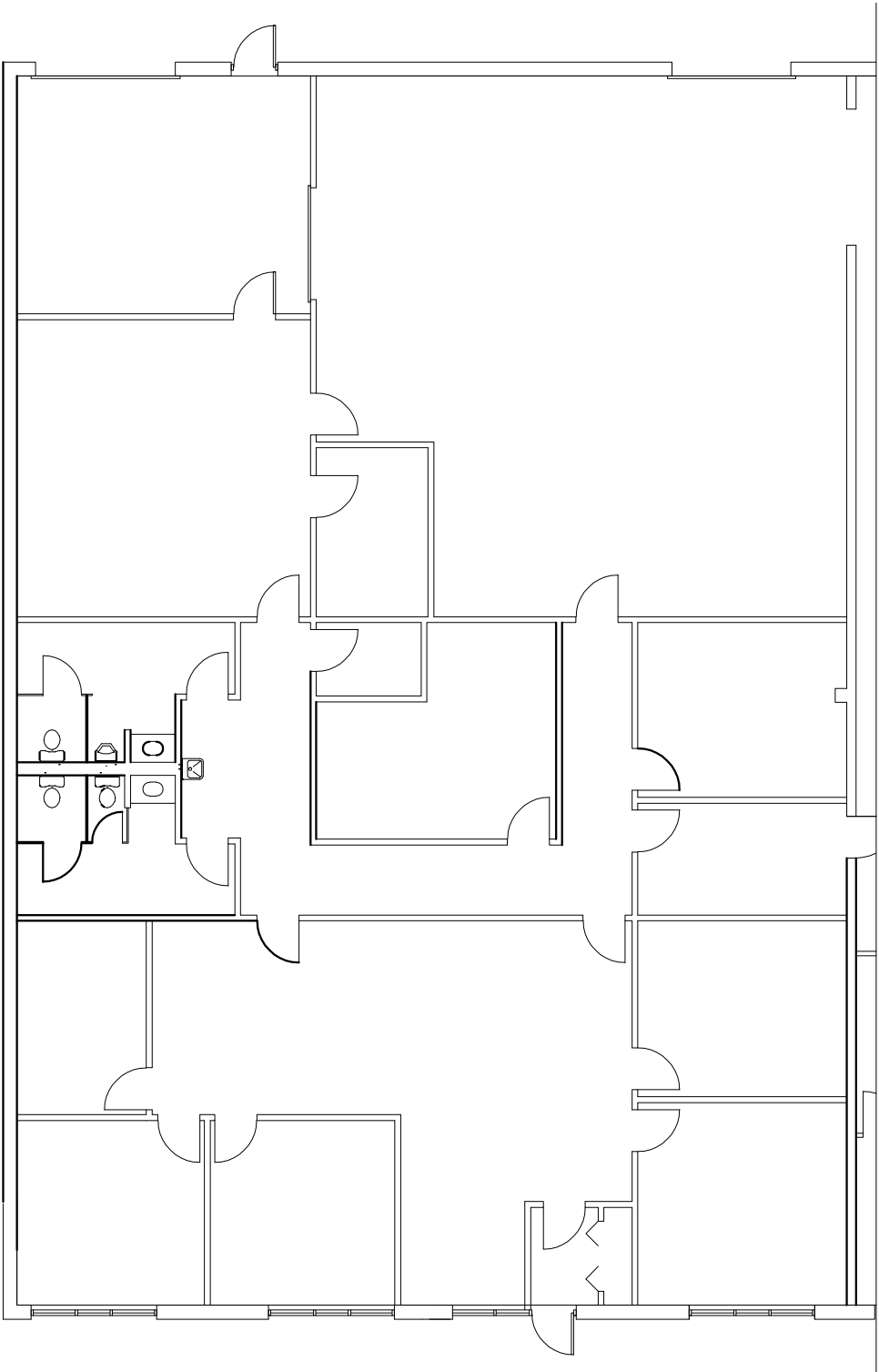
PROPERTY 6573 FLOOR PLAN

 Available Units



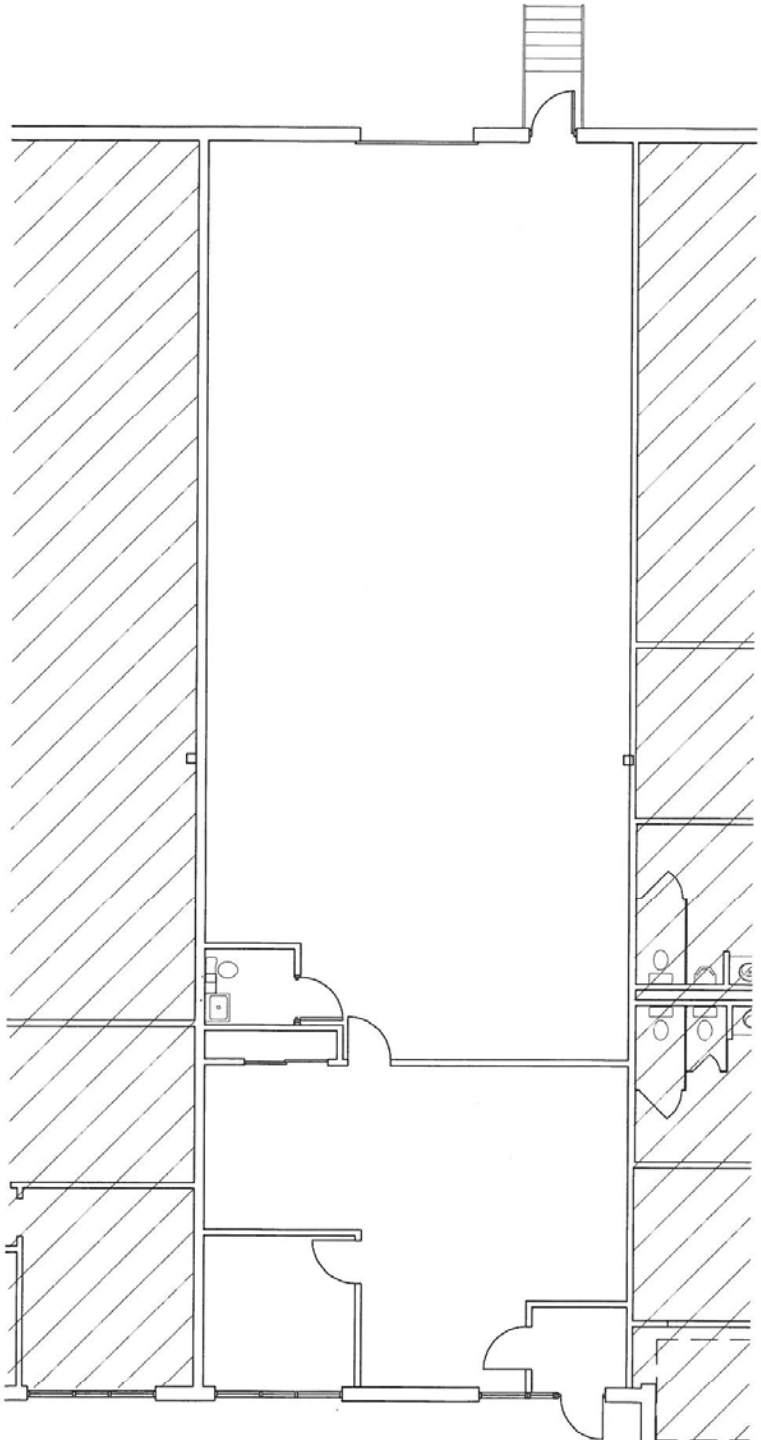
PROPERTY 6573
FLOOR PLAN

SUITE A
5,400 SF



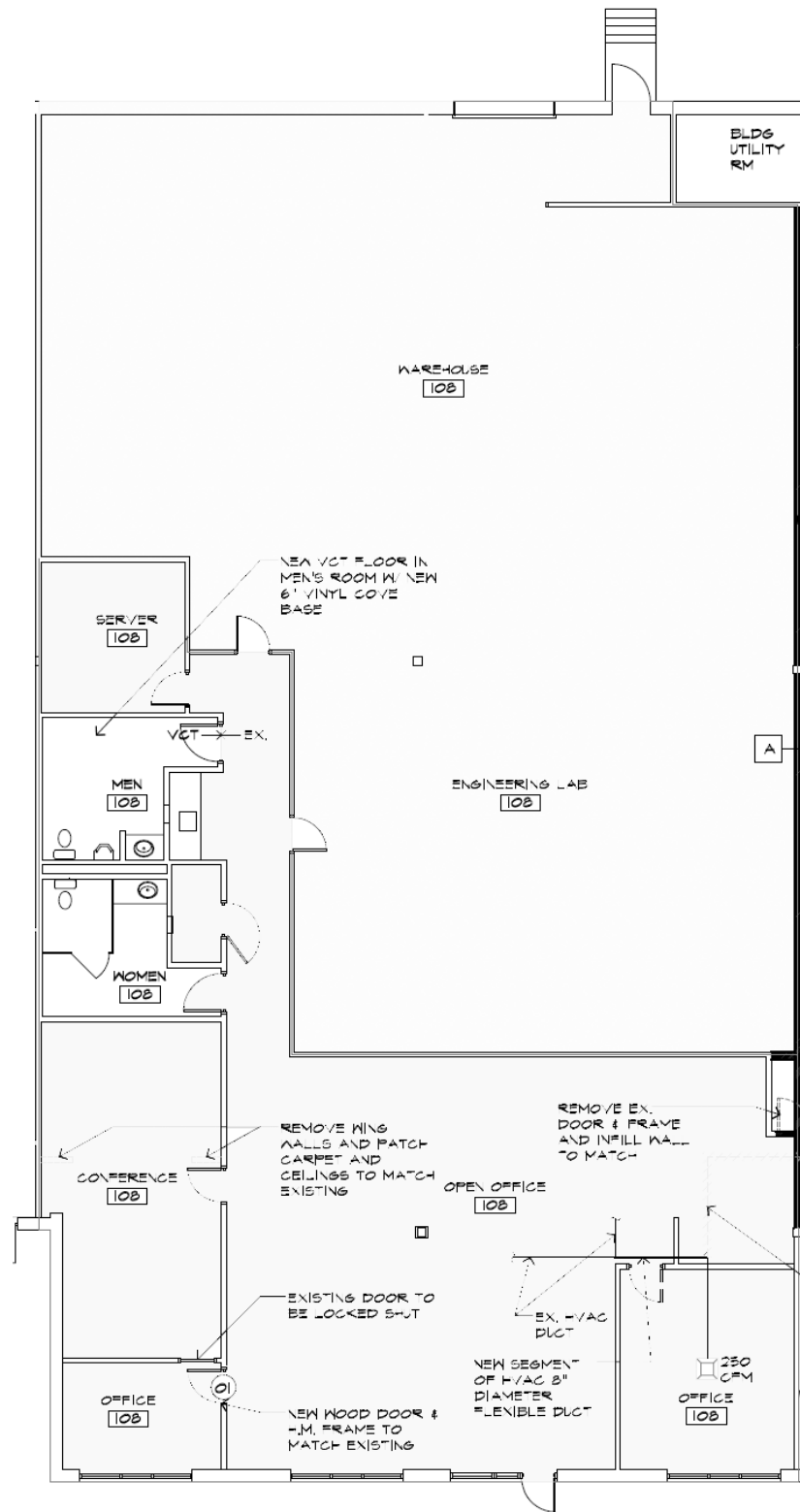
PROPERTY 6573
FLOOR PLAN

SUITE H
2,700 SF



PROPERTY 6573 FLOOR PLAN

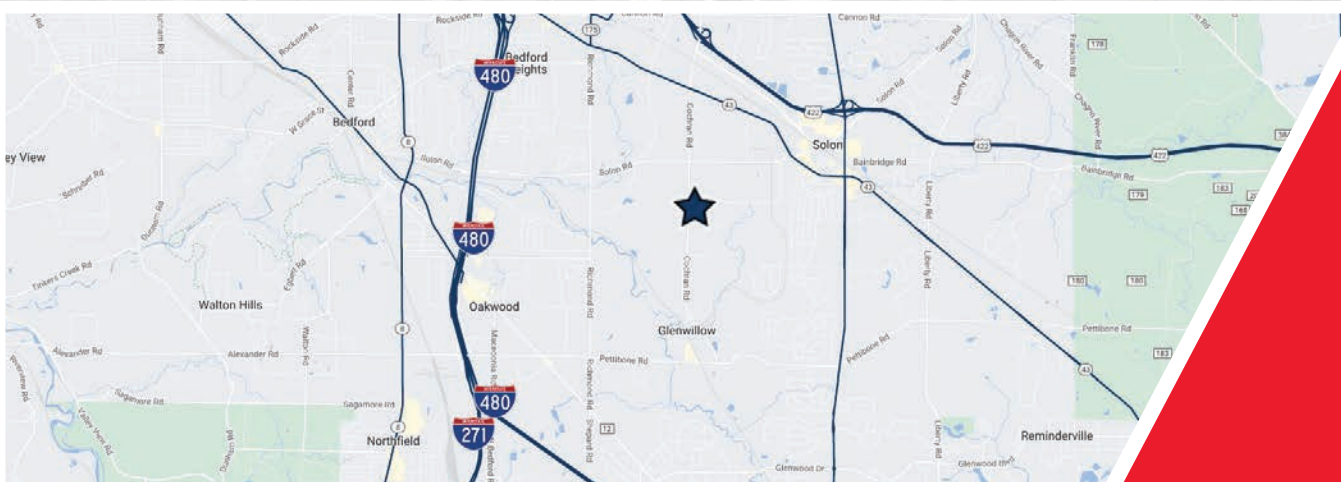
SUITE I
6,560 SF



PROPERTY AERIAL MAP



6551-6573 Cochran Road



Close access to
I-480 and I-271



ELIOT KIJEWSKI, SIOR

Principal
+1 216 525 1487
ekijewski@crescorealestate.com

BOB GARBER, SIOR

Executive Vice President & Partner Emeritus
+1 216 525 1467
bgarber@crescorealestate.com

SIMON CAPLAN, SIOR

Executive Vice President & Partner Emeritus
+1 216 525 1472
scaplan@crescorealestate.com

MATTHEW E. BEESLEY

Executive Vice President & Partner Emeritus
+1 216 525 1466
mbeesley@crescorealestate.com