



Colliers

AVAILABLE
137,522 SF

For Lease

Contact us:

Brian Kling

Principal
+1 847 698 8223
brian.kling@colliers.com

Ron Behm, SIOR

Principal
+1 847 712 6010
ron.behm@colliers.com

2701 Galvin Drive Elgin, IL

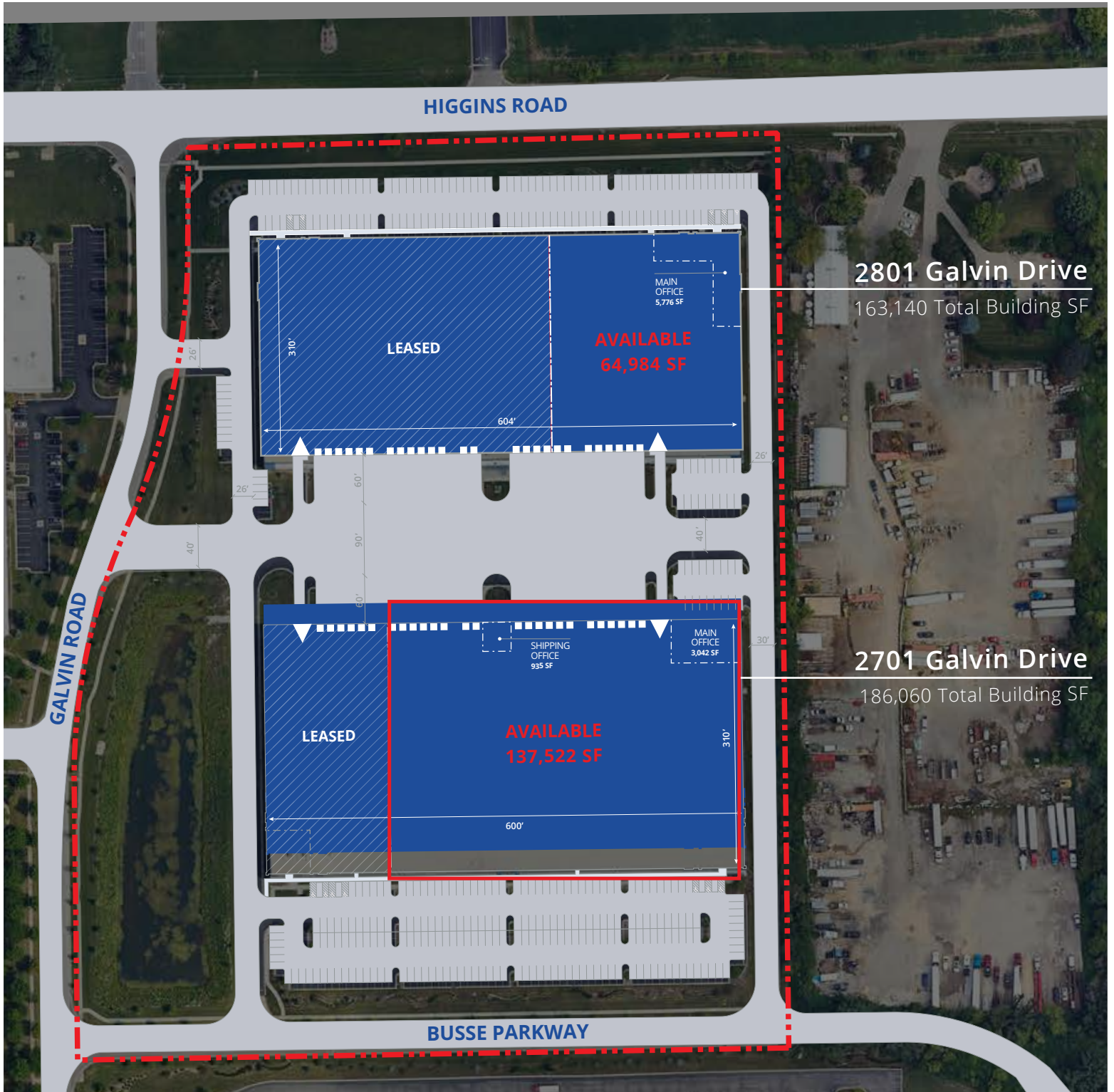
Property Specifications

- **137,522 SF Available**
- Total Building: 186,060 SF
- 3,042 SF Main office
- 935 SF Shipping office
- 32' clear height
- 16 Exterior docks with levelers and dock restraints
- 1 Drive-in door
- ESFR system
- 1,600 amps @ 480 volts (3-phase)
- 174 car parking
- 50' x 52' (60' staging bays) | 310' depth
- Built in 2020
- Lease Rate: Subject to offer
- [View additional building plans](#)

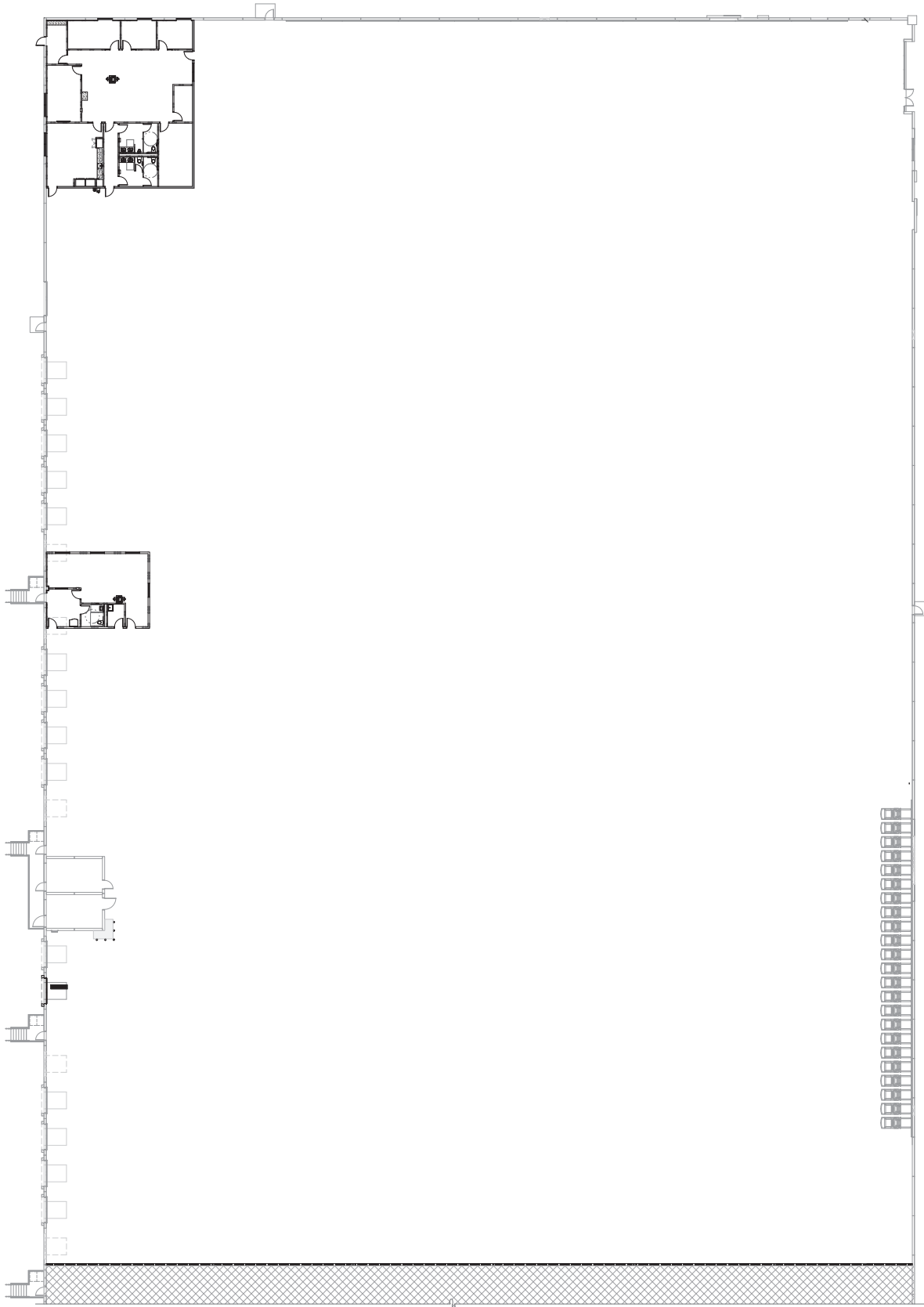
Highlights

- Class A retail amenities within the business park
- Highly desirable Kane County location
- Immediate access to I-90 via Randall Road

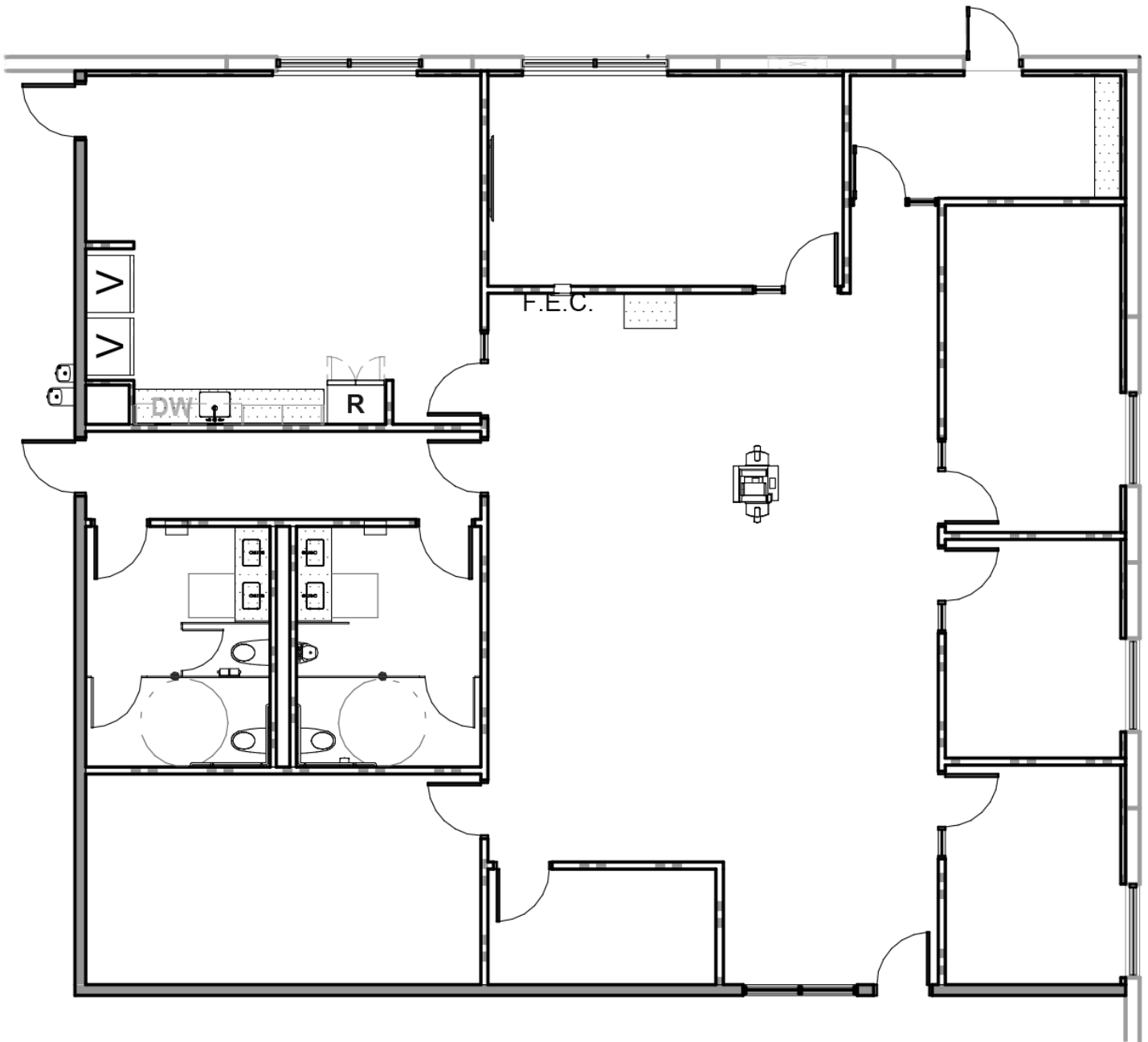
Aerial



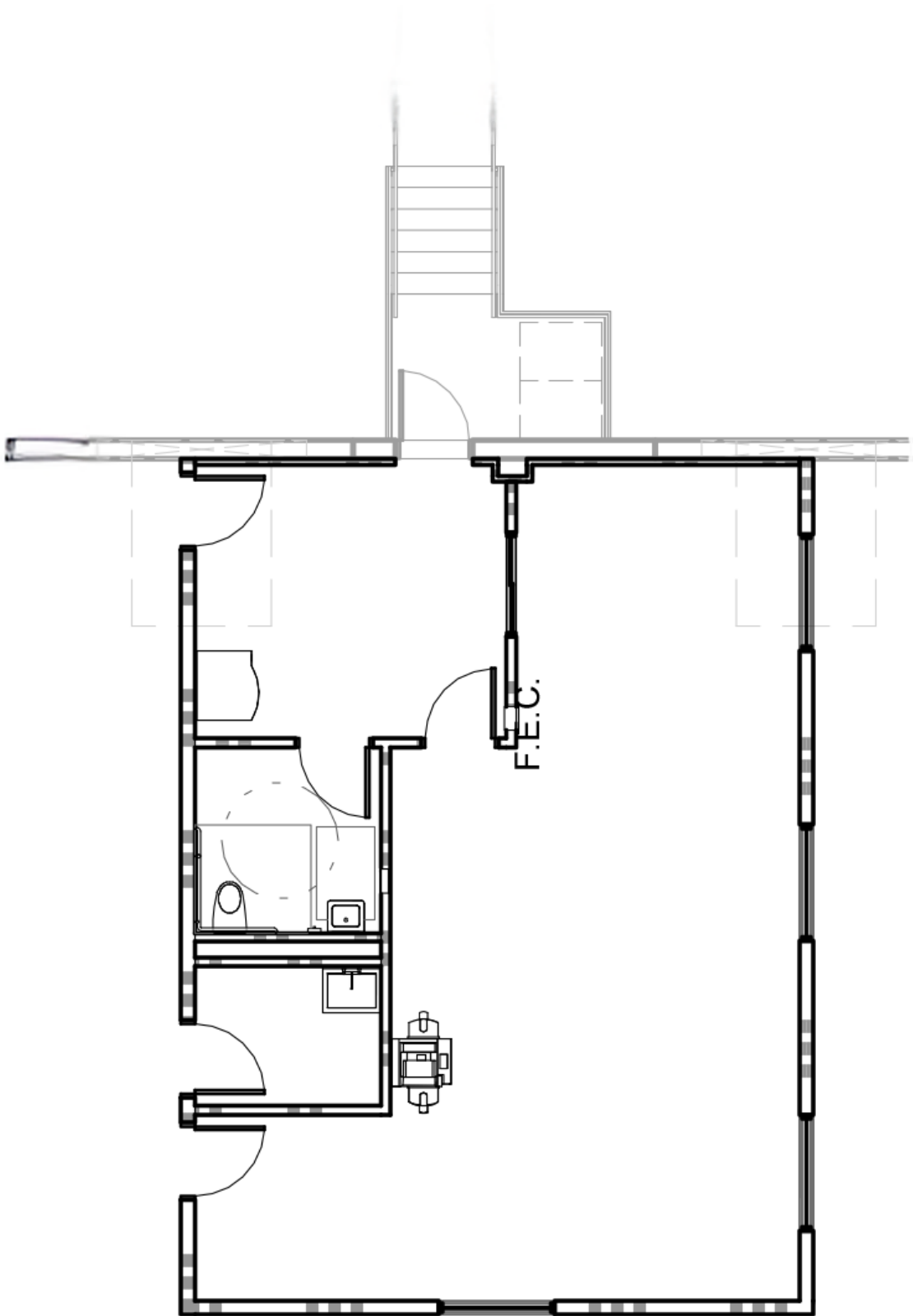
Building Plan



Main Office - 3,042 SF



Shipping Office - 935 SF



Location & Access

