

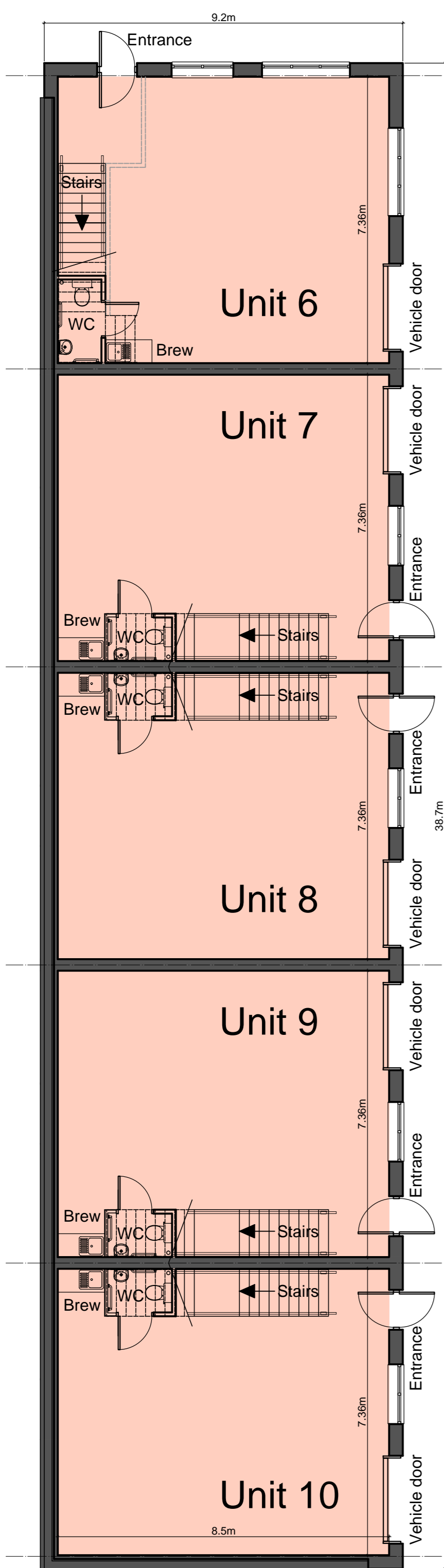
Units 6 to 10  
 Ground Floor net 62m<sup>2</sup>  
 First Floor net 59m<sup>2</sup>  
 Total each unit 121m<sup>2</sup> - 1,392ft<sup>2</sup>  
 Total for Block 605m<sup>2</sup> - 6,512ft<sup>2</sup>

Unit 15  
 Ground Floor net 106m<sup>2</sup>  
 First Floor net 104m<sup>2</sup>  
 Total each unit 210m<sup>2</sup> - 2,260ft<sup>2</sup>  
 Units 11 to 14  
 Ground Floor net 78m<sup>2</sup>  
 First Floor net 76m<sup>2</sup>  
 Total each unit 154m<sup>2</sup> - 1,657ft<sup>2</sup>  
 Total for Block 826m<sup>2</sup> - 8,890ft<sup>2</sup>

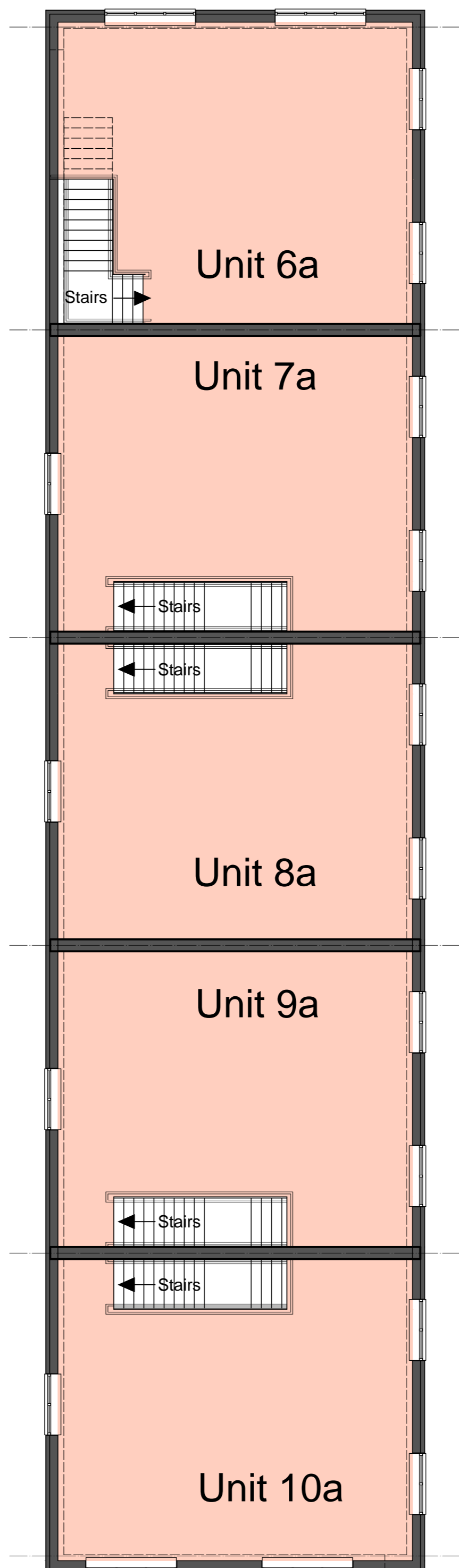
NOTES

- This drawing is copyright. No unauthorised copying of drawing without the express permission of the architect.
- Do not scale from prints. Use figure dimensions only.
- Contractors to check all dimensions on site prior to commencement of works.
- All works to be carried out in accordance with current statutory Health and Safety Regulations.
- This drawing is to be read in conjunction with all relevant consultants' and / or specialists' drawings / documents and any discrepancies or variations are to be notified to the architect before affected work commences.

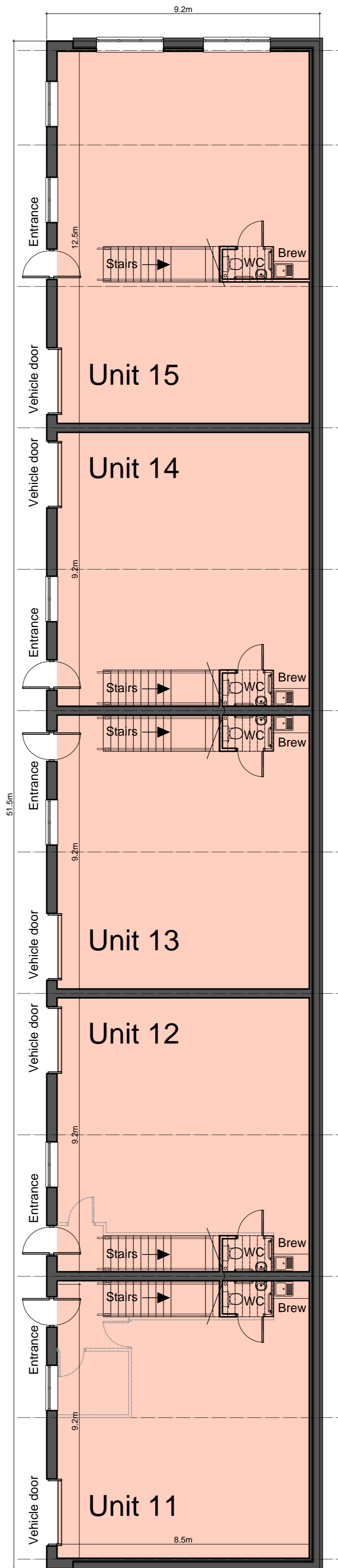
REV.	AMENDMENTS	DATE
Rev A	Unit numbers added	21-03-10



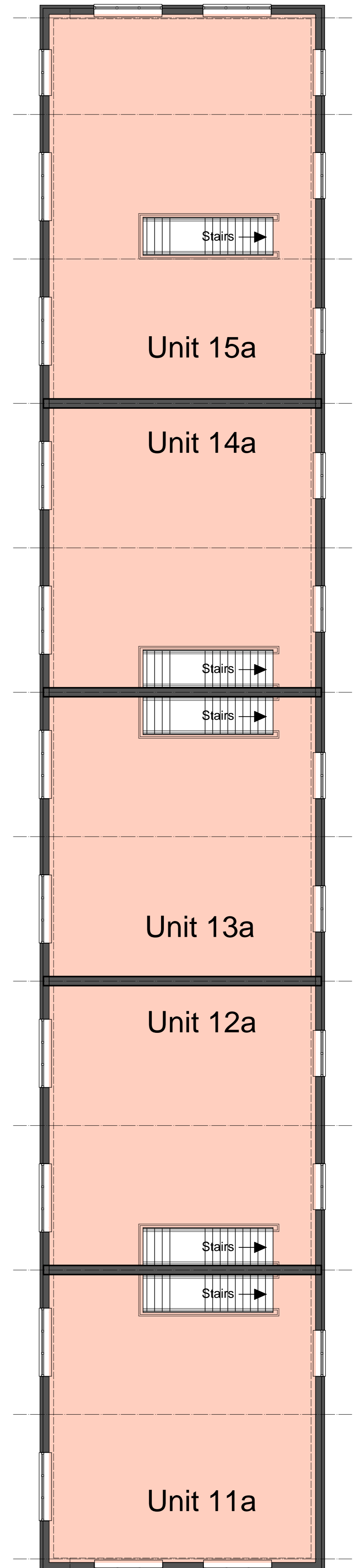
ground floor plan



first floor plan



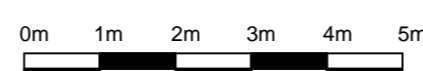
ground floor plan



first floor plan

Total gross area  
 356m<sup>2</sup>  
 474m<sup>2</sup>  
 830m<sup>2</sup>

Ground & First Floor Building Plans @ 1:100 at A1



Project	WHITEHILLS BUSINESS PARK SITE 2 PHASE 2
Drawing	UNITS D & E BUILDING PLANS
Client	HENCO INTERNATIONAL LTD
Dwn. By	NP
Scale	1:100 @ A1
Drg. No.	15-06-S2-305-A
Drg. Size	A1
Date	FEBRUARY 2021