



WINSTON TRAITEL  
REALTY, INC.

# FOR SUB LEASE



**37200 Amrhein  
Livonia, MI 48150**

**For More Information Contact:**

**Mark Lusky**



**248.624.7200**



**[mlusky@wtrealty.com](mailto:mlusky@wtrealty.com)**

Information contained herein is subject to verification and no liability for errors or omissions is assumed.  
Price is subject to change and listing may be withdrawn without notice.

# PROPERTY INFORMATION

**33,330 SQ. FT.**

**2330 SQ. FT. OFFICE**

**LEASE RATE \$7.95 PSF  
INCLUDING TAXES & INSURANCE**

**1.65 ACRES**

**15' CLEARANCE**

**TWO TRUCK WELLS**

**ONE OVERHEAD DOOR**

**44 CAR PARKING**

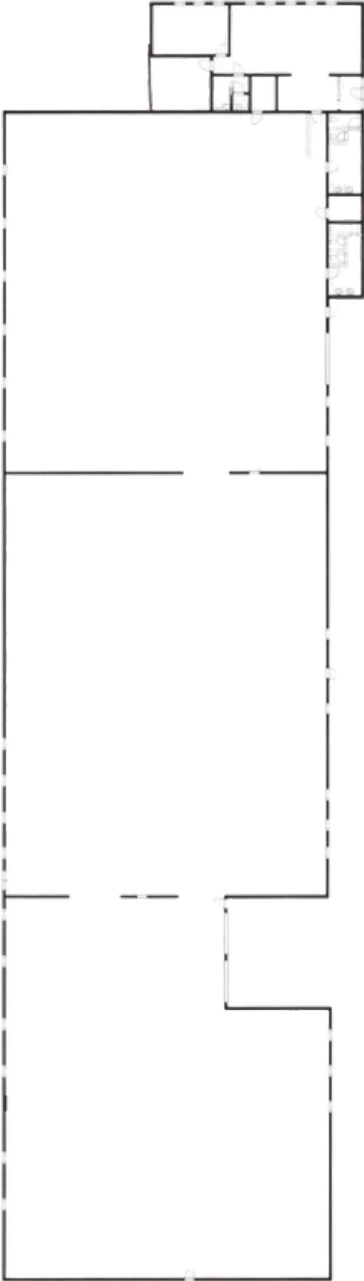
**M-2 (LIGHT INDUSTRIAL) ZONING**

**800 AMPS/240 POWER**



**FOR MORE INFORMATION CONTACT:  
MARK LUSKY 248-624-7200**

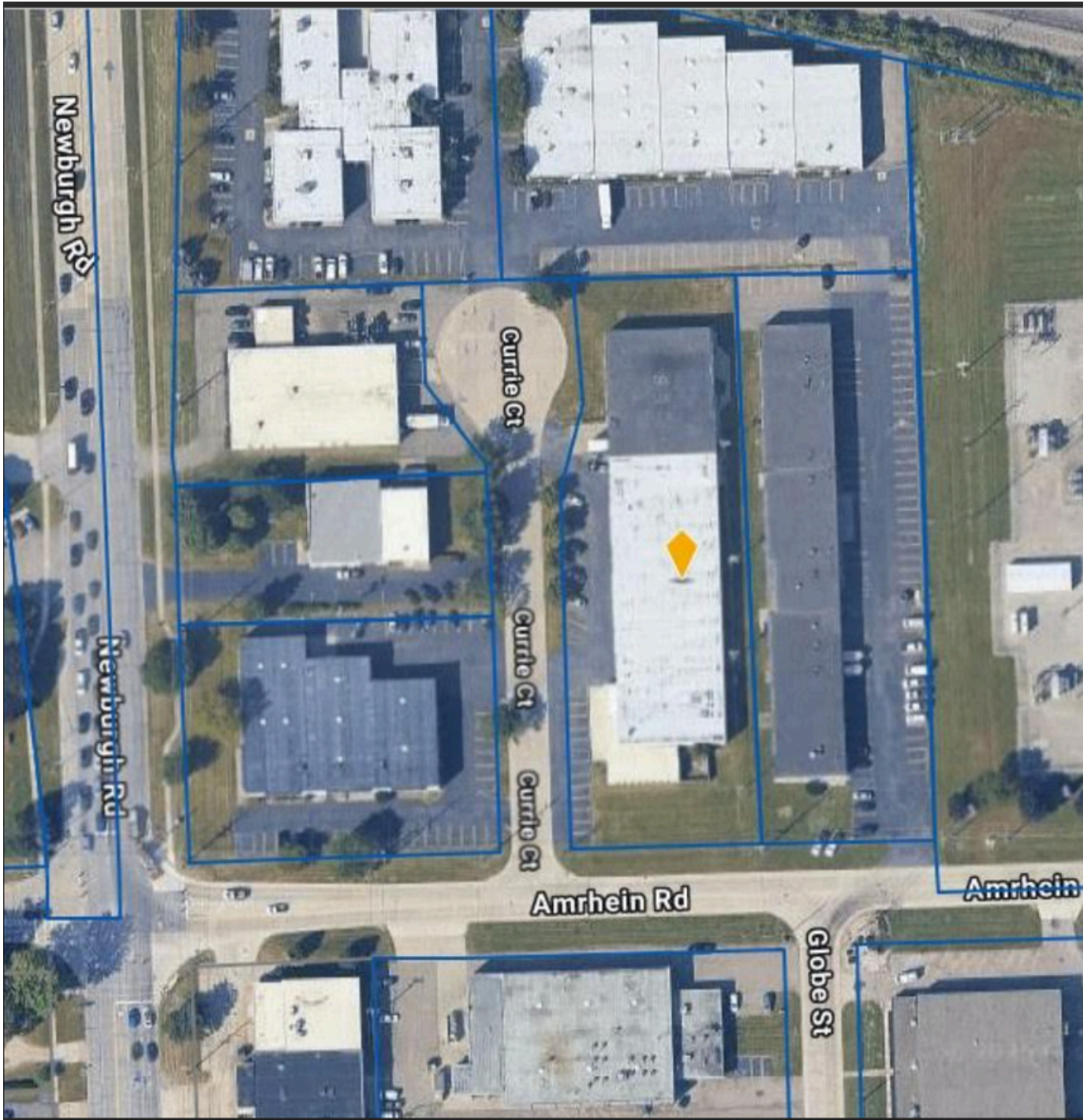
# FLOOR PLAN



FOR MORE INFORMATION CONTACT:  
MARK LUSKY 248-624-7200

Information contained herein is subject to verification and no liability for errors or omissions is assumed.  
Price is subject to change and listing may be withdrawn without notice.

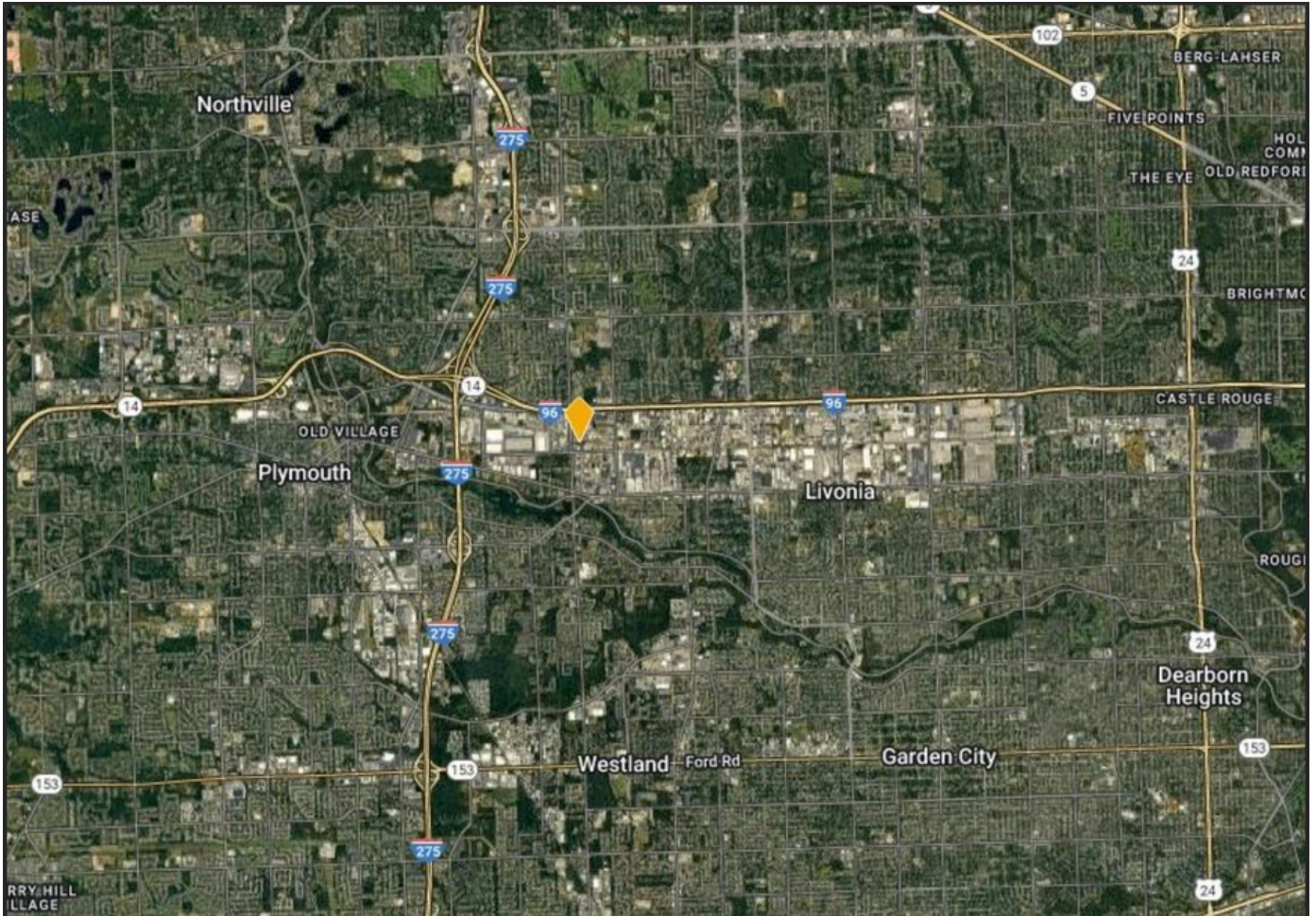
# AERIAL



FOR MORE INFORMATION CONTACT:  
MARK LUSKY 248-624-7200

Information contained herein is subject to verification and no liability for errors or omissions is assumed.  
Price is subject to change and listing may be withdrawn without notice.

# MAPS



FOR MORE INFORMATION CONTACT:  
MARK LUSKY 248-624-7200

Information contained herein is subject to verification and no liability for errors or omissions is assumed.  
Price is subject to change and listing may be withdrawn without notice.