

TO LET

**STORAGE YARD 385.17 SQ M (4,146 SQ FT)
CONTAINING 2 MODERN PORTACABINS -
60.57 SQ M (652 SQ FT)**

Modern Portacabins, Searles Yard, Parsonage Way,
Horsham, RH12 4AQ



**CRICK
MAY**

Summary

Available Size	652 sq ft
Rent	£20,000 per annum inclusive of business rates and service charge, but exclusive of utilities, insurance and VAT.
EPC Rating	Upon enquiry

Location

Searles Yard is located just to the north of Horsham town centre on the northern side of Parsonage Road between the railway line and Ringley Road. The industrial estate is accessed via Parsonage Way. Horsham town centre is approximately 1.1 miles to the south-west and Littlehaven railway station is approximately 10 minutes walking distance to the north.

Description

Premises comprise an open storage yard containing 2 detached modern portacabins with one being configured to provide well-fitted, open plan office accommodation and the other as a welfare block providing WC and kitchen facilities, carpet tiling, laminate wood floorings, fluorescent strip lighting and car parking.

Accommodation

The accommodation comprises the following approximate net internal floor areas:

Name	sq ft	sq m
Unit - Office	384	35.67
Unit - Welfare	268	24.90
Total	652	60.57

Terms

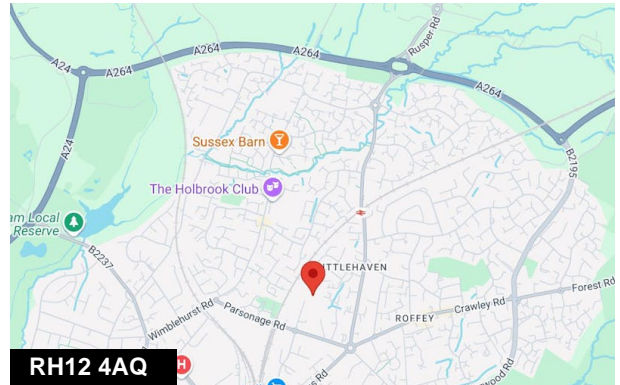
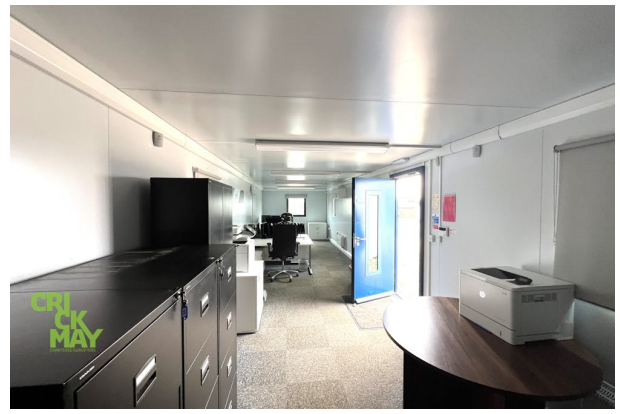
A new lease is available on terms to be agreed.

VAT

VAT is applicable on the terms quoted.

Legal Costs

Each party to be responsible for their own legal costs.



Viewing & Further Information



Jonathan Mack

01403 756510 | 07557 562699

jm@crickmay.co.uk



Daniel Lascelles

01403 756518 | 07786 298025

dl@crickmay.co.uk

More details @ crickmay.co.uk