



**SUB-LEASE**

## Port Orange, FL

720 DUNLAWTON AVENUE

Port Orange, FL 32127

**PRESENTED BY:**

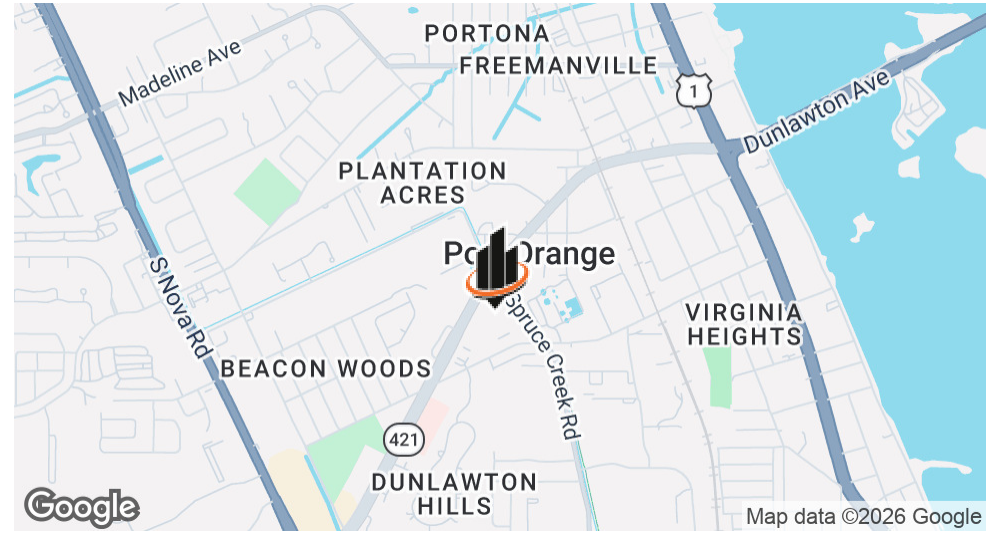
**PATRICK M. OPALEWSKI, CCIM**

Phone: 386.295.9676

patrick.opalewski@svn.com

FL #BK3042967

## PROPERTY SUMMARY



## OFFERING SUMMARY

<b>SUB-LEASE RATE</b>	\$25.00 SF/yr (Gross)
<b>NUMBER OF UNITS:</b>	1
<b>AVAILABLE SF:</b>	Up to 4,750 SF
<b>OFFICE SPACE SIZE:</b>	9,550 SF
<b>SUB-LEASE TERM:</b>	Up to 10 - Years

### PATRICK M. OPALEWSKI, CCIM

O: 386.295.9676  
patrick.opalewski@svn.com  
FL #BK3042967

720 DUNLAWTON AVENUE | Port Orange, FL 32127

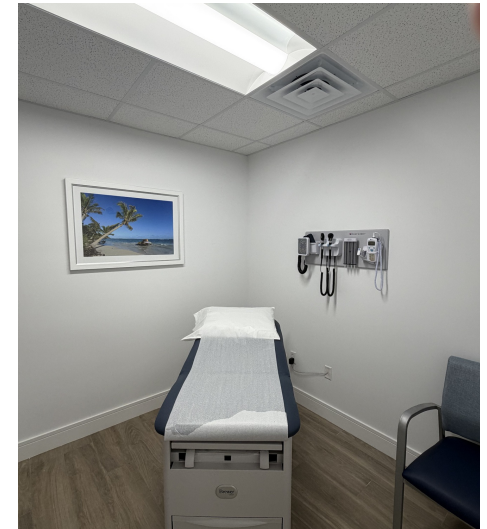
## PROPERTY DESCRIPTION

Sublease Opportunity - Fully Built-Out Medical Space  
Prime medical office space located directly on Dunlawton Ave. in Port Orange, FL. This well-appointed suite offers excellent visibility and strong frontage along one of the area's main commercial corridors. Up to 4,750 SF, competitively priced with favorable rental terms, this is a rare long-term sublease opportunity for medical or professional users seeking immediate occupancy.

## PROPERTY HIGHLIGHTS

- Highly Visible Location
- Ample Parking
- Built-Out Space

## ADDITIONAL PHOTOS

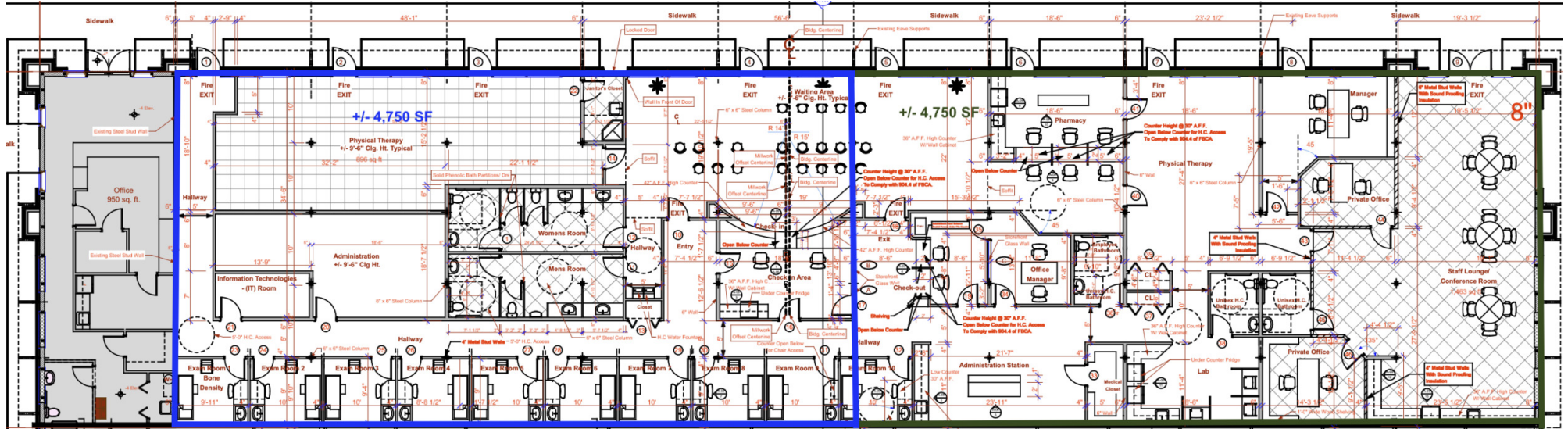


**PATRICK M. OPALEWSKI, CCIM**  
O: 386.295.9676  
patrick.opalewski@svn.com  
FL #BK3042967

**720 DUNLAWTON AVENUE** | Port Orange, FL 32127

**SVN | ALLIANCE COMMERCIAL REAL ESTATE ADVISORS** 3

# FLOOR PLANS



**PATRICK M. OPALEWSKI, CCIM**

O: 386.295.9676

patrick.opalewski@svn.com

FL #BK3042967