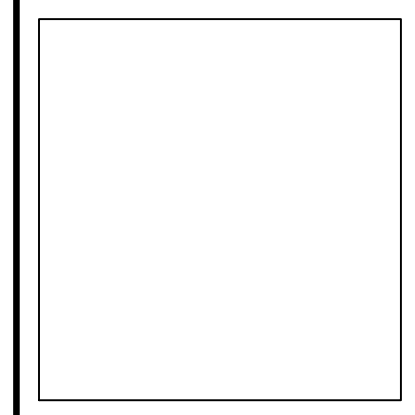
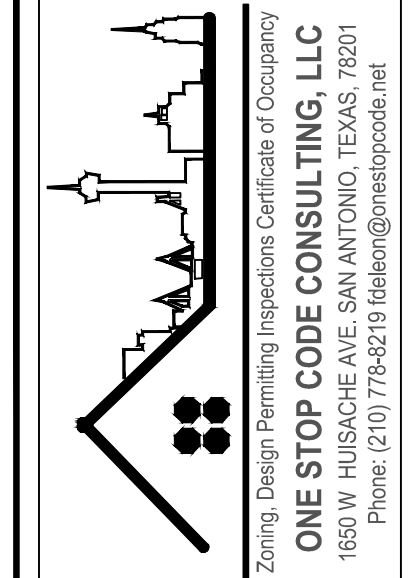


DESIGNER :



**ELMENDORF BLDG. 1**  
**1522 SOUTH ELMENDORF ST**  
**SAN ANTONIO, TEXAS 78207**

DRAWN BY: K.F.L.

CHECKED BY: F.D.L.

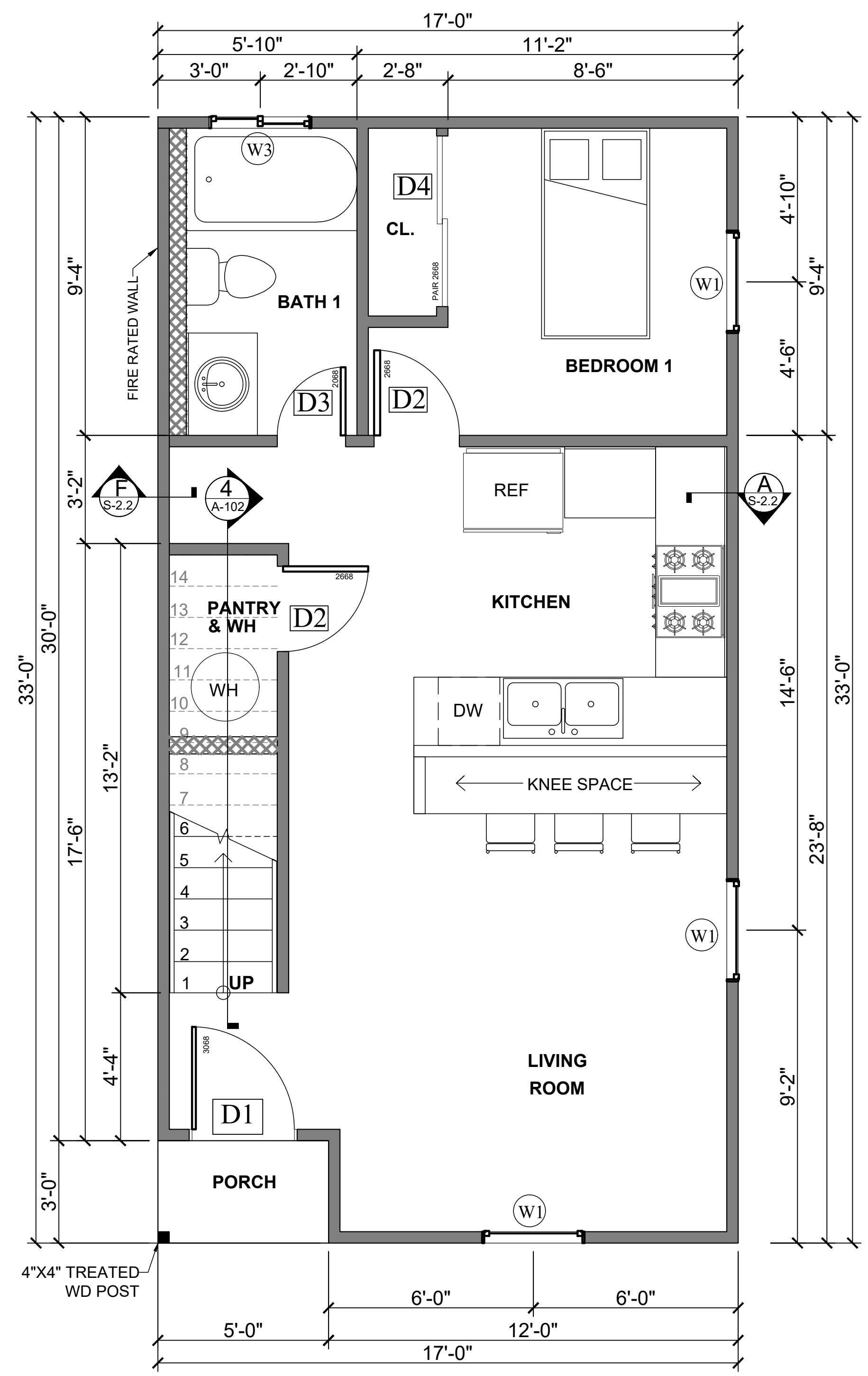
DATE: 1/17/23

COMMENTS:

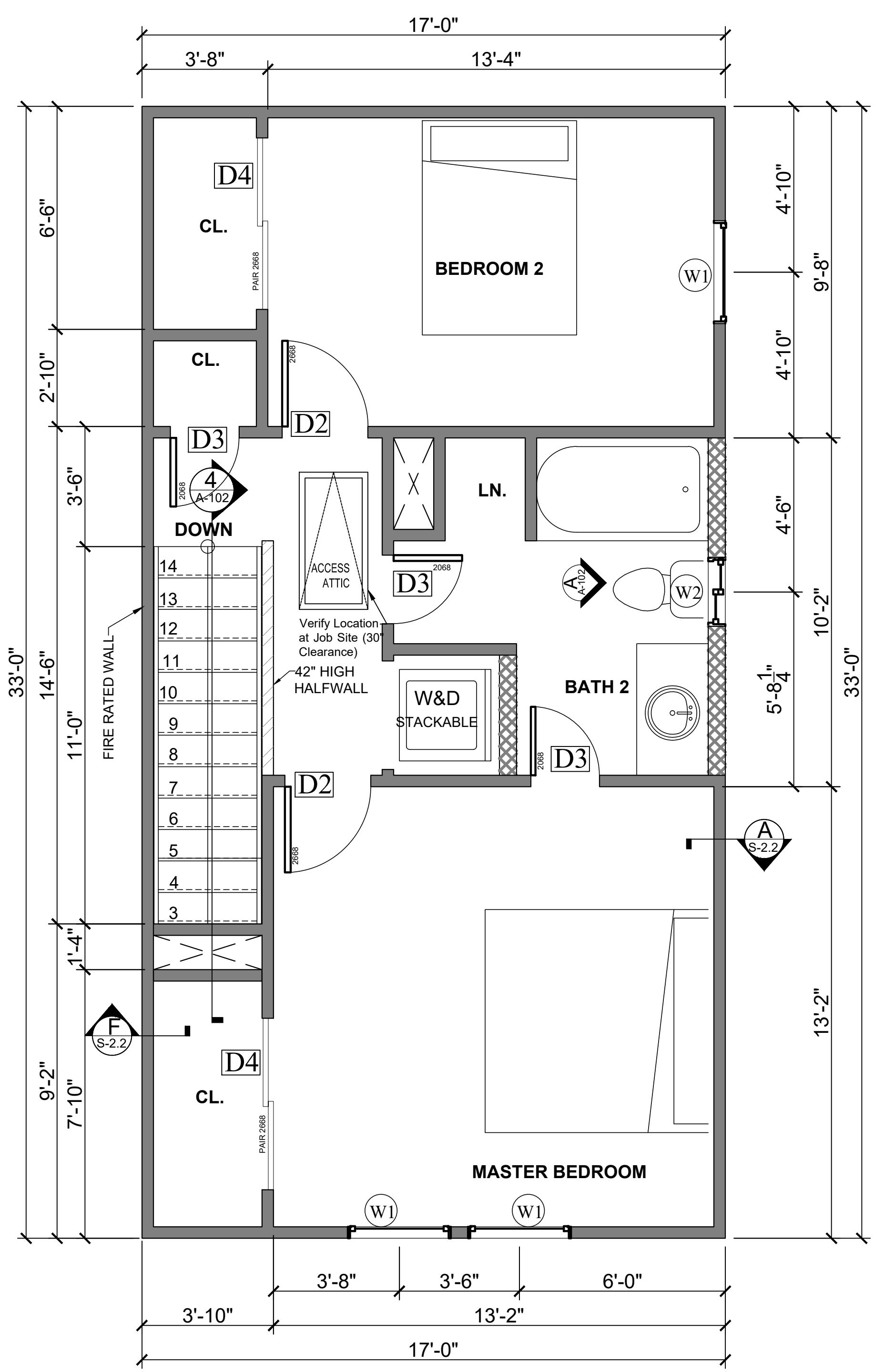
REVISIONS:

SHEET:

A-101



**1 FLOOR PLAN - 1ST FLOOR**  
 SCALE: 3/8" = 1'-0"  
 NORTH



**2 FLOOR PLAN - 2ND FLOOR**  
 SCALE: 3/8" = 1'-0"  
 NORTH

**LEGEND:**  
 2X4 WALL  
 2X6 WALL  
 4X4 TREATED WOOD POST  
 42" HIGH HALF WALL

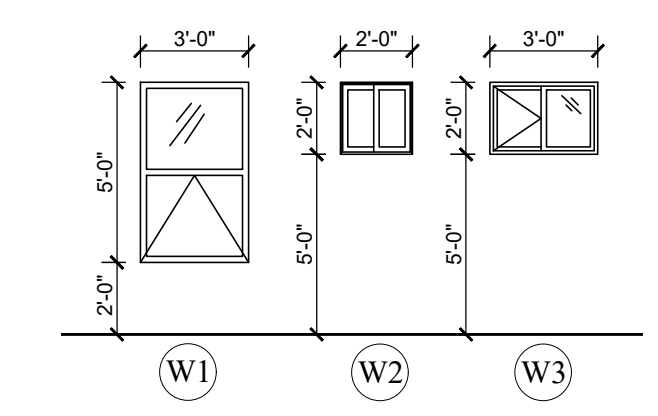
**FOOTAGES BUILDING 1**

1ST FLOOR	LIVING AREA:	546 SQ-FT
	PORCH:	15 SQ-FT
2ND FLOOR	LIVING AREA:	526 SQ-FT
TOTAL LIVING AREA:		1,072 SQ-FT

**WINDOW SCHEDULE (1ST & 2ND FLOOR)**

Designation	Window Size	Qty.	Description
W1	3'-0" x 5'-0"	6	Single Hung Window With Insulated Glass
W2	2'-0" x 2'-0"	1	Single Window With Insulated Glass
W3	3'-0" x 2'-0"	1	Single Sliding Window With Insulated Glass

T - DENOTES TEMPERED GLASS

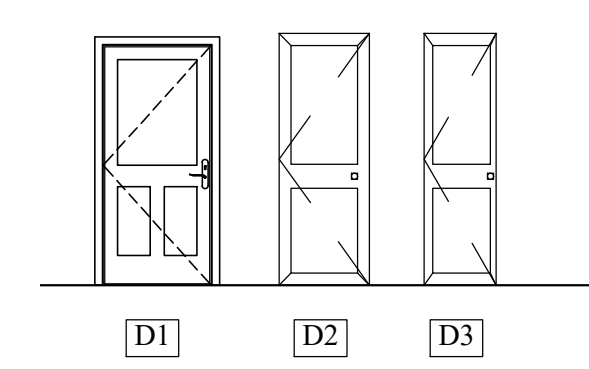


**4 WINDOW ELEVATIONS**  
 SCALE: 3/16" = 1'-0"

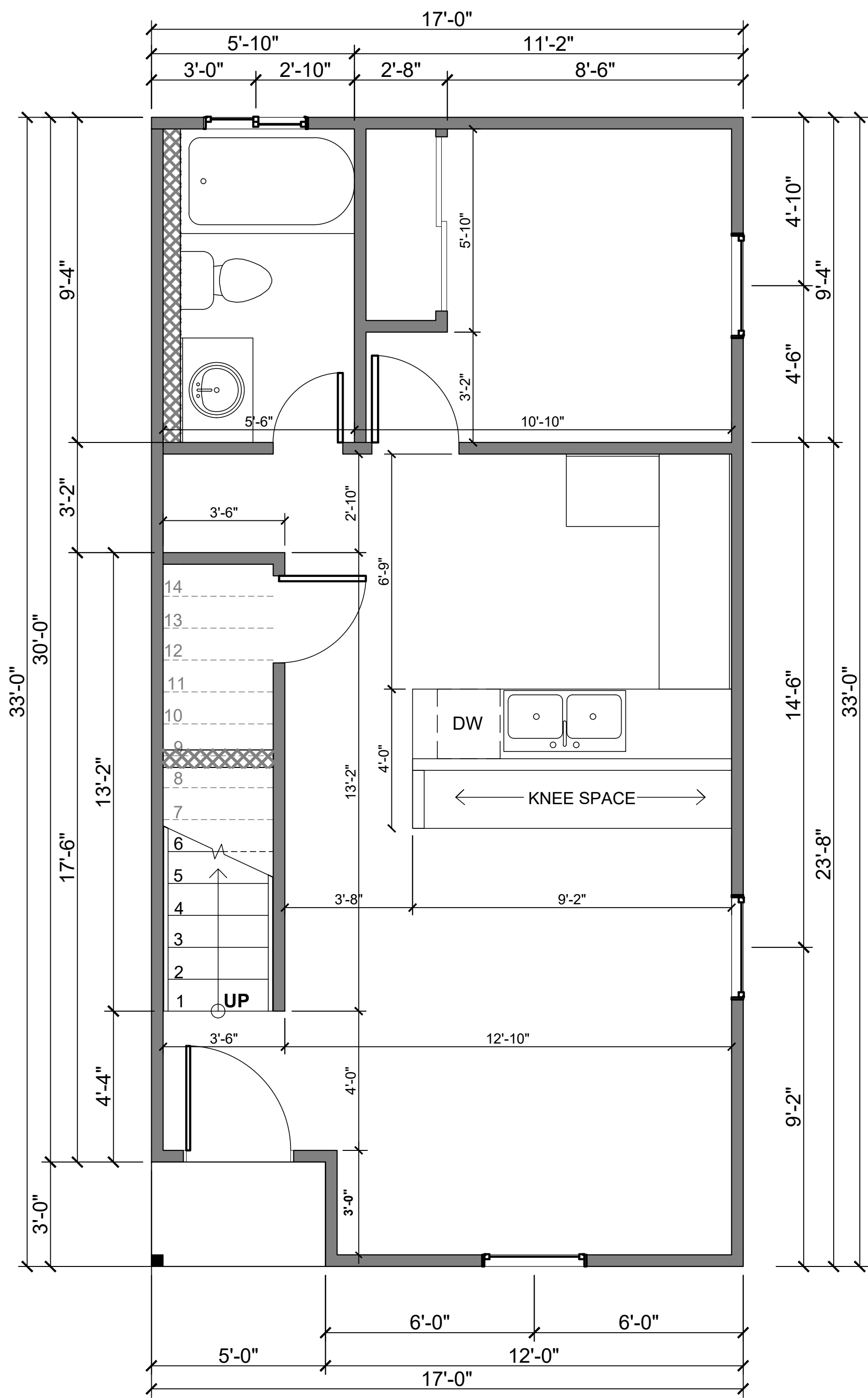
**DOOR SCHEDULE (1ST & 2ND FLOOR)**

NO.	Door Size	Qty.	Description	Remarks
D1	3'-0" x 6'-8"	1	Exterior Decor Single Door With	Keyed Lock & Dead Bolt
D2	2'-6" x 6'-8"	4	Interior Hollow Core Door (H.C.)	Keyed Lock
D3	2'-0" x 6'-8"	4	Interior Hollow Core Door (H.C.)	Keyed Lock
D4	5'-0" x 6'-8"	3	Interior Double Sliding Door	

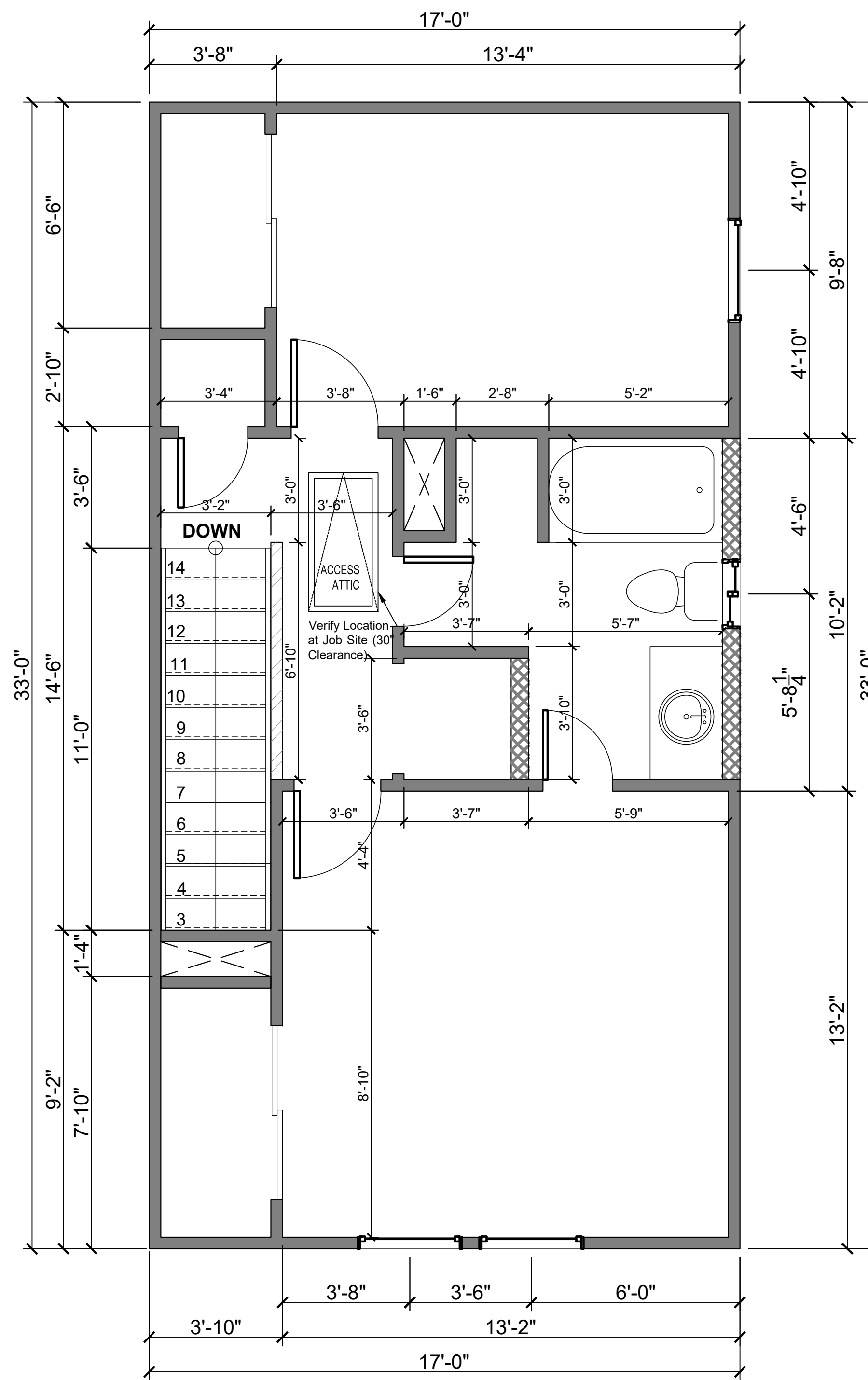
Note: 24" x 48" Attic Access With Pull Down Stairs (Verify Location At Job Site)



**3 DOOR ELEVATIONS**  
 SCALE: 3/16" = 1'-0"



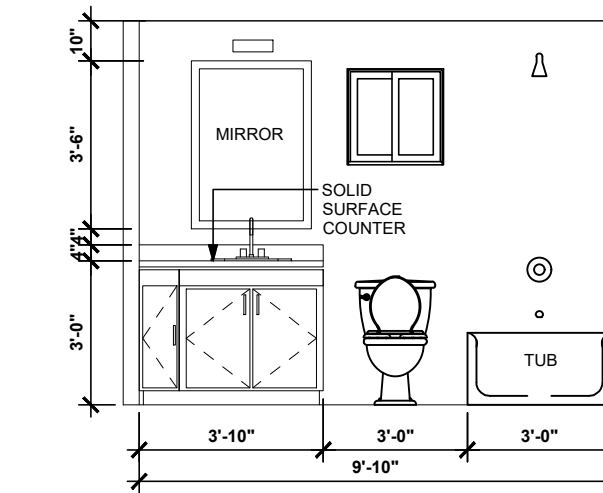
**1** DIMENSION PLAN - 1ST FLOOR  
SCALE: 3/8" = 1'-0" NORTH



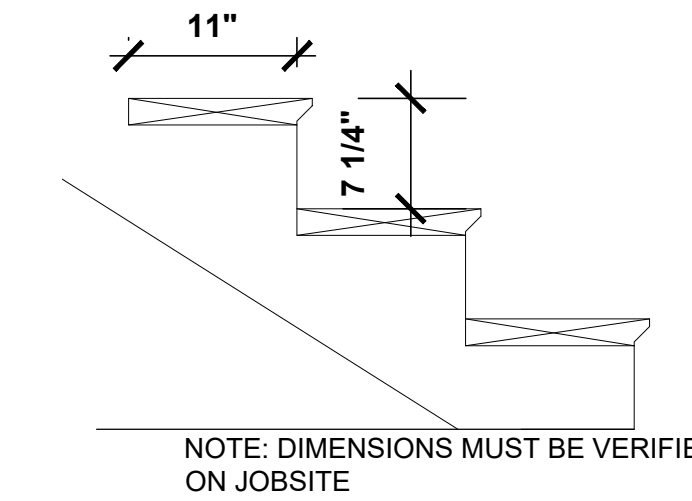
**2** DIMENSION PLAN - 2ND FLOOR  
SCALE: 3/8" = 1'-0" NORTH

- LEGEND:**
- 2X4 WALL
  - 2X6 WALL
  - 4X4 TREATED WOOD POST
  - 42" HIGH HALFWALL

FOOTAGES BUILDING 1	
1ST FLOOR	
LIVING AREA:	546 SQ-FT
PORCH:	15 SQ-FT
2ND FLOOR	
LIVING AREA:	526 SQ-FT
TOTAL LIVING AREA:	1,072 SQ-FT

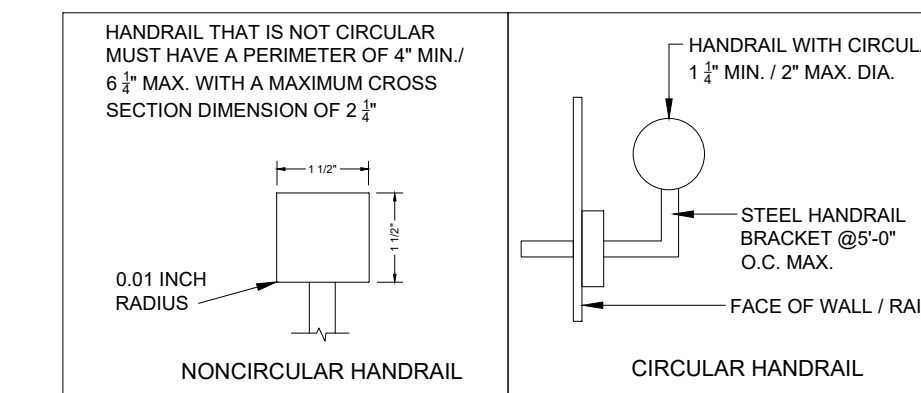


**A** BATH 2 ELEVATION  
SCALE: 1/4" = 1'-0"

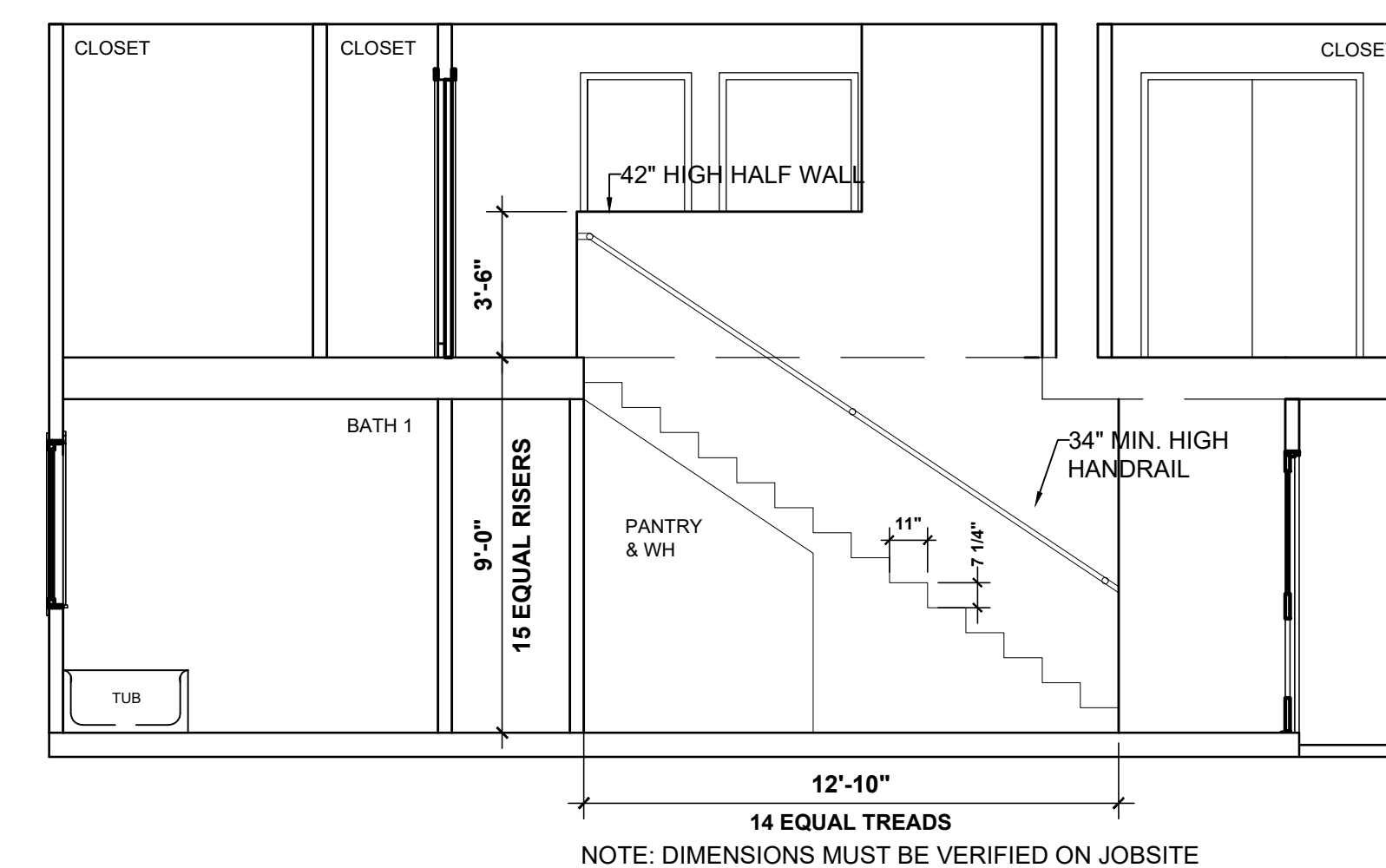


**3** STAIR DETAIL  
SCALE: N.T.S.

R302.7 Under-stair protection.  
Enclosed space under stairs that is accessed by a door or access panel shall have walls, under-stair surface and any soffits protected on the enclosed side with 1/2" (12.7mm) gypsum board.

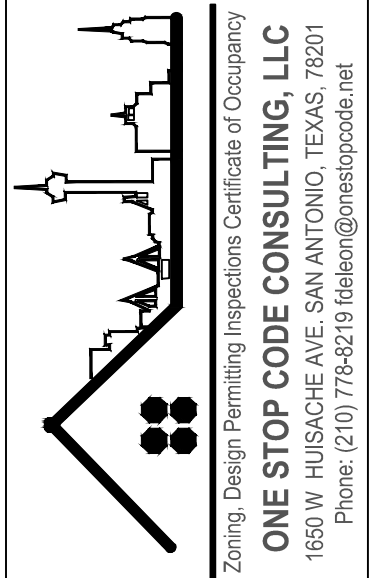


**5** HANDRAIL DETAIL  
SCALE: N.T.S.



**4** STAIR SECTION  
SCALE: 1/4" = 1'-0"

DESIGNER :



**ELMENDORF BLDG. 1**  
1522 SOUTH ELMENDORF ST  
SAN ANTONIO, TEXAS 78207

DRAWN BY: K.F.L.

CHECKED BY: F.D.L.

DATE: 1/17/23

COMMENTS:

REVISIONS:

SHEET:

A-102