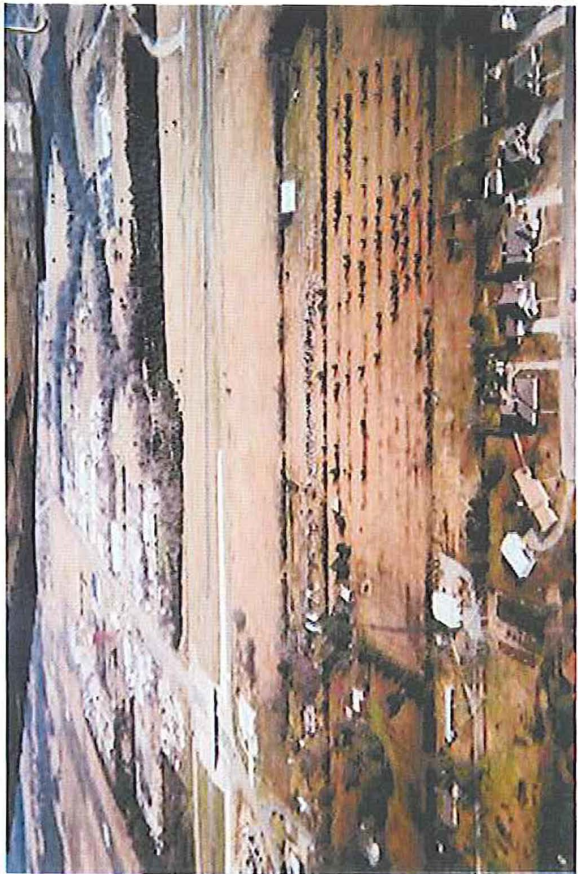
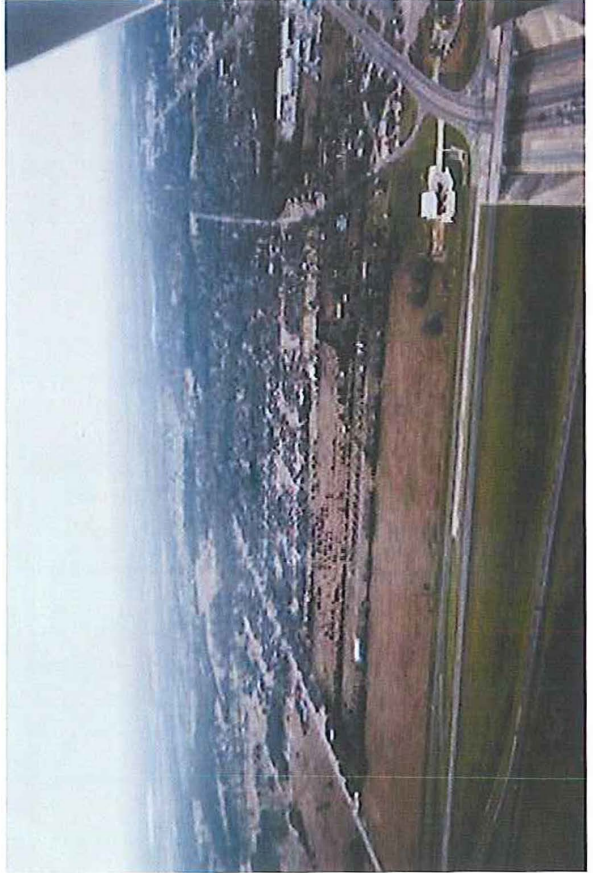


Bonham Freeway Retail Tract

- Location:** East of the southeast corner of Highway 82 and Highway 78; east and adjacent to new Brookshire's Grocery Store. City of Bonham, Fannin County.
- Size:** 9.5 acres; will subdivide.
- Depth:** Approximately 400 feet.
- Zoning:** General Business, includes retail.
- Utilities:** Water: 12" line on south side of Highway 82 in the right-of-way across the north side of the property runs all the way to Pecan Street.
Sewer: 10" sanitary sewer line exists to the west at the corner of Highway 82 and Highway 78.
- Access:** Off ramp just west of Highway 78 coming from west.
Off ramp just east of Highway 78 coming from east.
On ramp to freeway just to the east of the property.
- Price:** Build-suit or will sell pads.

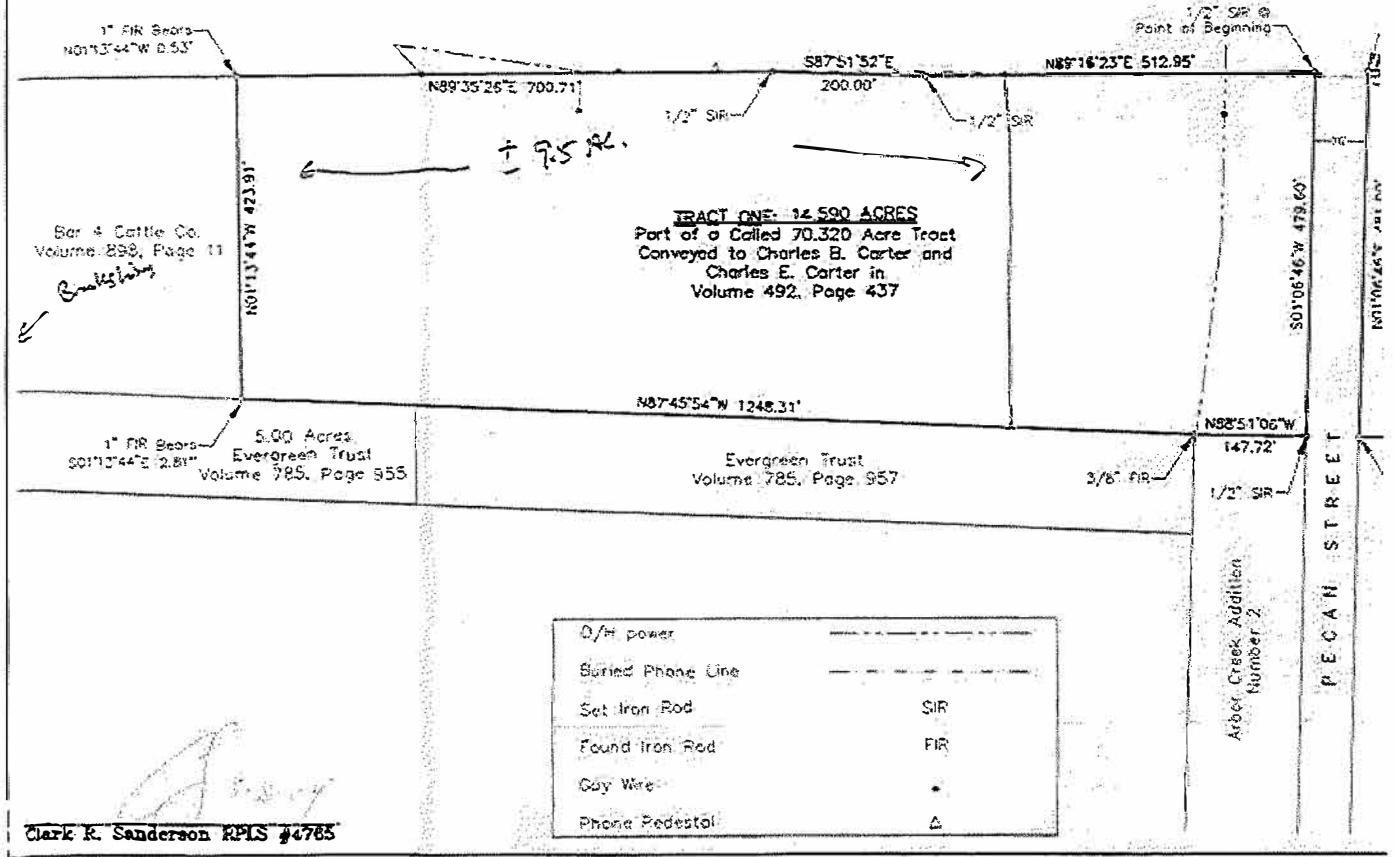


SURVEY #04-091 CARTER

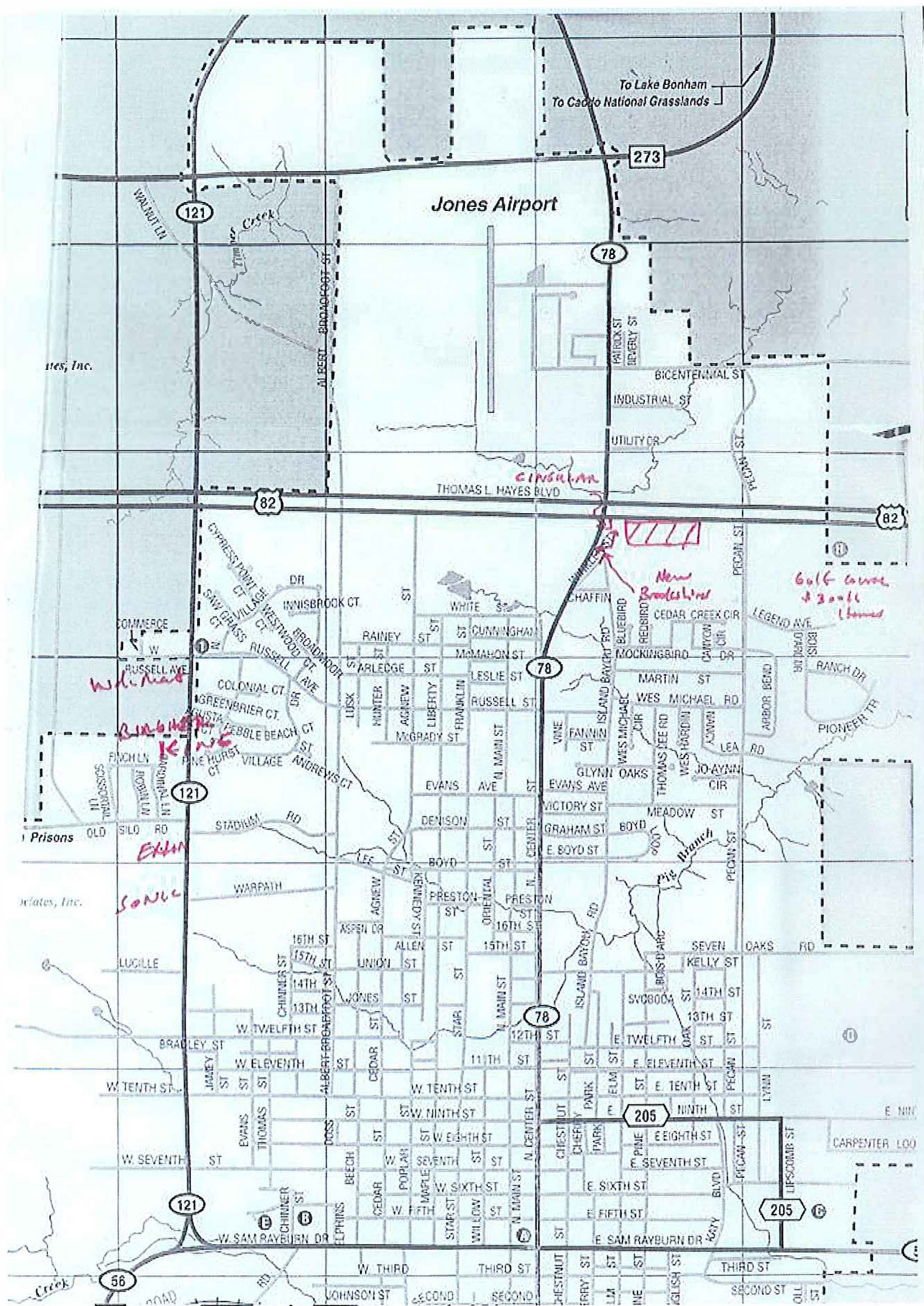


U S 8 2

Scale 1"=200'



Clark K. Sanderson RPLS #4785



To Lake Bonham
To Caddo National Grasslands

Jones Airport

Inc., Inc.

Prisons

Wates, Inc.

W.L. Mas

B.L. Mas

Ken

E.H.M.

S.O.N.C.

273

121

78

82

82

78

121

78

121

205

205

56

273

121

78

82

82

78

121

78

121

205

205

56

273

121

78

82

82

78

121

78

121

205

205

56

273

121

78

82

82

78

121

78

121

205

205

56

273

121

78

82

82

78

121

78

121

205

205

56

273

121

78

82

82

78

121

78

121

205

205

56

273

121

78

82

82

78

121

78

121

205

205

56

273

121

78

82

82

78

121

78

121

205

205

56

273

121

78

82

82

78

121

78

121

205

205

56

273

121

78

82

82

78

121

78

121

205

205

56

273

121

78

82

82

78

121

78

121

205

205

56

273

121

78

82

82

78

121

78

121

205

205

56

273

121

78

82

82

78

121

78

121

205

205

56

273

121

78

82

82

78

121

78

121

205

205

56

273

121

78

82

82

78

121

78

121

205

205

56

273

121

78

82

82

78

121

78

121

205

205

56

273

121

78

82

82

78

121

78

121

205

205

56

273

121

78

82

82

78

121

78

121

205

205

56

273

121

78

82

82

78

121

78

121

205

205

56

273

121

78

82

82

78

121

78

121

205

205

56

273

121

78

82

82

78

121

78

121

205

205

56

273

121

78

82

82

78

121

78

121

205

205

56

273

121

78

82

82

78

121

78

121

205

205

56

273

121

78

82

82

78

121

78

121

205

205

56

273

121

78

82

82

78

121

78

121

205

205

56

273

121

78

82

82

78

121

78

121

205

205

56

273

121

78

82

82

78

121

78

121

205

205

56