

FOR SALE

MILWAUKEE INDUSTRIAL COMPLEX

830, 900 & 915 E KEEFE AVENUE AND
3522 N FRATNEY STREET
MILWAUKEE, WI 53212

FOUNDERS | **3**
REAL ESTATE SERVICES

Property Highlights

- Large industrial complex offering a flexible combination of building space, paved lots, and outdoor storage
- Approximately 2.825 acres of fenced yard area for equipment, materials, or fleet parking
- Multi-building layout supports owner-user operations or multi-tenant use
- Heavy power, gated access, paved lots, and security systems in place
- Rare infill industrial offering with significant outdoor storage capacity in the City of Milwaukee

Specifications

SALE PRICE	\$8,000,000
Building Area	383,915 SF
830 E Keefe Ave	67,267 SF
900 E Keefe Ave	316,648 SF
Parcel Size	18.293 AC
830 E Keefe Ave	2.32 AC
900 E Keefe Ave	13.15 AC
915 E Keefe Ave	.648 AC
3522 N Fratney St	2.175 AC
Zoning	IL2

Contact

Brett Deter
414.520.1122
bdeter@founders3.com

Derek Yentz
414.520.8073
dyentz@founders3.com



414.271.1111 | www.founders3.com

Information shown herein was provided by Seller/Lessor and/or third parties and has not been verified by the broker unless otherwise indicated.

FOR SALE

MILWAUKEE INDUSTRIAL COMPLEX

830, 900 & 915 E KEEFE AVENUE AND
3522 N FRATNEY STREET
MILWAUKEE, WI 53212



PROPERTY DETAILS

#1 | 900 E KEEFE AVENUE

BUILDING SIZE	324,166 SF
WAREHOUSE SIZE	276,726 SF
OFFICE SIZE	47,400 SF
BASEMENT SIZE	5,150 SF
CLEAR HEIGHT	16' (average)
YEAR BUILT	1920-1942
CONSTRUCTION	Masonry concrete block
SPRINKLERS	100%
HVAC	Unit heaters; boiler heat and forced AC
CONSTRUCTION	Insulated precast
ZONING	Light Manufacturing
ACRES	13.15 AC
PARCEL #	274-0124-100

#2 | 830 E KEEFE AVENUE

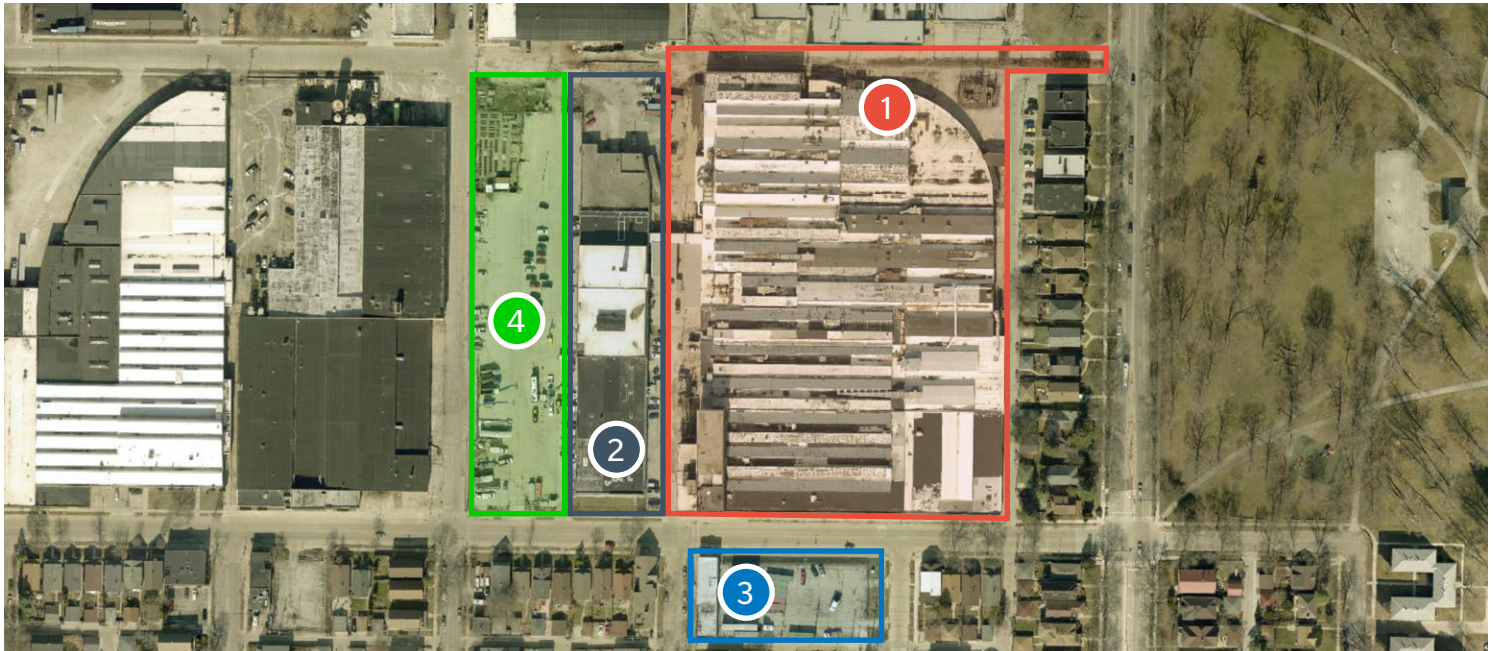
BUILDING SIZE	67,445 SF
WAREHOUSE SIZE	66,245 SF
OFFICE SIZE	1,200 SF
CLEAR HEIGHT	16' (average)
YEAR BUILT	1934
CONSTRUCTION	Masonry concrete block
ACRES	13.15 AC
PARCEL #	274-0131-110

#3 | 915 E KEEFE AVENUE

PARCEL SIZE	.648 AC
PARCEL #	281-0777-110

#4 | 3522 N FRATNEY STREET

PARCEL SIZE	2.175 AC
PARCEL #	274-130-000



414.271.1111 | wwwFOUNDERS3.com

Information shown herein was provided by Seller/Lessor and/or third parties and has not been verified by the broker unless otherwise indicated.

STATE OF WISCONSIN BROKER DISCLOSURE



Wisconsin law requires all real estate licensees to give the following information about brokerage services to prospective customers.

Prior to negotiating on your behalf the Brokerage firm, or an agent associated with the firm, must provide you the following disclosure statement.

Disclosure to Customers

You are a customer of the brokerage firm (hereinafter Firm). The Firm is either an agent of another party in the transaction or a subagent of another firm that is the agent of another party in the transaction. A broker or a salesperson acting on behalf of the Firm may provide brokerage services to you. Whenever the Firm is providing brokerage services to you, the Firm and its brokers and salespersons (hereinafter Agents) owe you, the customer, the following duties:

- The duty to provide brokerage services to you fairly and honestly.
- The duty to exercise reasonable skill and care in providing brokerage services to you.
- The duty to provide you with accurate information about market conditions within a reasonable time if you request it, unless disclosure of the information is prohibited by law.
- The duty to disclose to you in writing certain Material Adverse Facts about a property, unless disclosure of the information is prohibited by law.
- The duty to protect your confidentiality. Unless the law requires it, the Firm and its Agents will not disclose your confidential information or the confidential information of other parties.
- The duty to safeguard trust funds and other property held by the Firm or its Agents.
- The duty, when negotiating, to present contract proposals in an objective and unbiased manner and disclose the advantages and disadvantages of the proposals.

Please review this information carefully. An Agent of the Firm can answer your questions about brokerage services, but if you need legal advice, tax advice, or a professional home inspection, contact an attorney, tax advisor, or home inspector. This disclosure is required by section 452.135 of the Wisconsin statutes and is for information only. It is a plain-language summary of the duties owed to a customer under section 452.133(1) of the Wisconsin statutes.

Confidentiality Notice to Customers

The Firm and its Agents will keep confidential any information given to the Firm or its Agents in confidence, or any information obtained by the Firm and its Agents that a reasonable person would want to be kept confidential, unless the information must be disclosed by law or you authorize the Firm to disclose particular information. The Firm and its Agents shall continue to keep the information confidential after the Firm is no longer providing brokerage services to you.

No representation is made as to the legal validity of any provision or the adequacy of any provision in any specific transaction.

The following information is required to be disclosed by law:

1. Material Adverse Facts, as defined in section 452.01(5g) of the Wisconsin Statutes (see "Definition of Adverse Facts" below).
2. Any facts known by the Firm or its Agents that contradict any information included in a written inspection report on the property or real estate is the subject of the transaction.

To ensure that the Firm and its Agents are aware of what specific information you consider confidential, you may list that information below or provide that information to the Firm or its Agents by other means. At a later time, you may also provide the Firm or its Agents with other information you consider to be confidential.

CONFIDENTIAL INFORMATION

NON-CONFIDENTIAL INFORMATION

(the following information may be disclosed to the Firm and its Agents)

(Insert information you authorize to be disclosed, such as financial qualification information.)

Definition of Material Adverse Facts

A "Material Adverse Fact" is defined in Wis. Stat. 452.01(5g) as an Adverse Fact that a party indicates is of such significance, or that is generally recognized by a competent licensee as being of such significance to a reasonable party, that it affects or would affect the party's decision to enter into a contract or agreement concerning a transaction or affects or would affect the party's decision about the terms of such a contract or agreement.

An "Adverse Fact" is defined in Wis. Stat. 452.01(1e) as a condition or occurrence that a competent licensee generally recognizes will significantly and adversely affect the value of the property, significantly reduce the structural integrity of improvements to real estate, or present a significant health risk to occupants of the property; or information that indicates that a party to a transaction is not able to or does not intend to meet his or her obligations under a contract or agreement made concerning the transaction.

Notice About Sex Offender Registry

You may obtain information about the sex offender registry and persons registered with the registry by contacting the Wisconsin Department of Corrections on the Internet at <http://www.doc.wi.gov> or by telephone at 608-240-5830.

