

# 3115 Marjan Drive | Doraville, GA 30340



## WAREHOUSE BUILDING AVAILABLE FOR LEASE

### Available Space:

- ▶ Total SF: 2,333 SF
- ▶ Office SF: 335 SF
- ▶ Loading: 1 DI
- ▶ Clear Height: 16'

### Property Features:

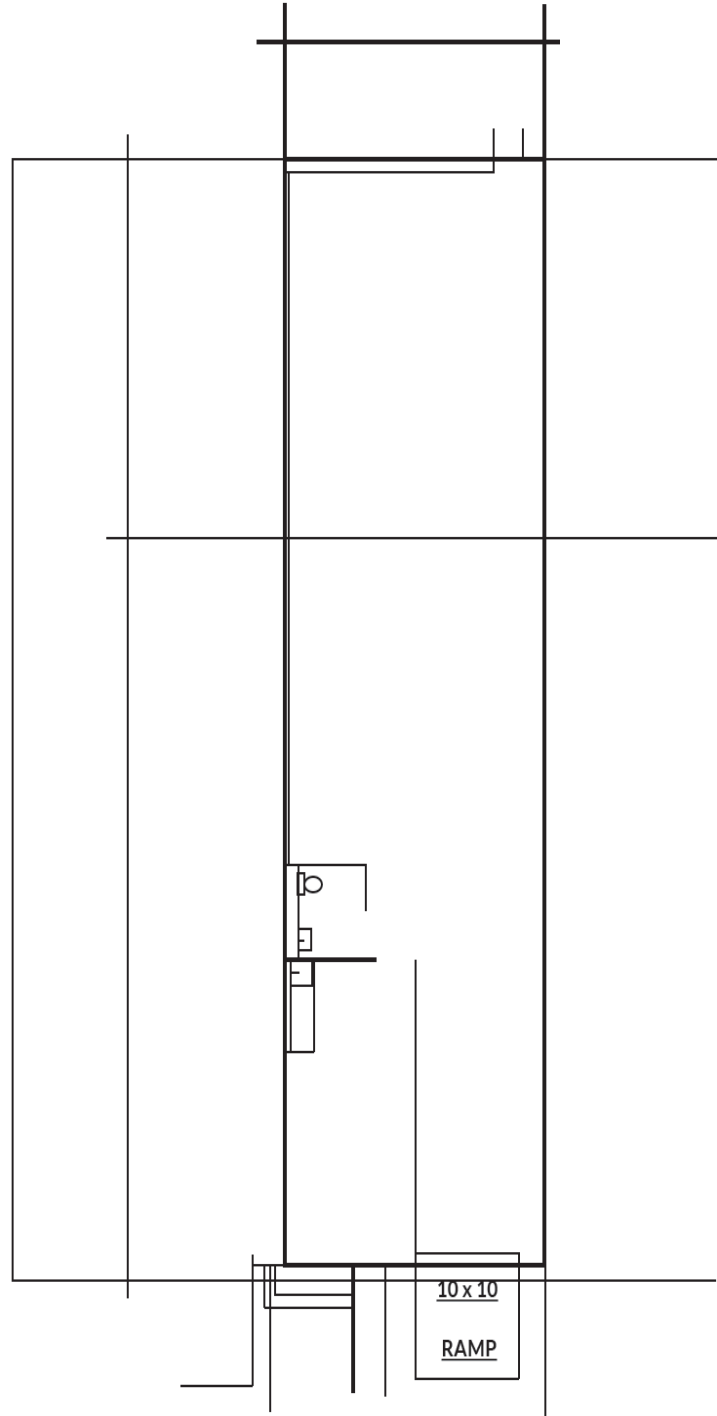
- ▶ Zoning: Light Industrial
- ▶ Loading: Front load
- ▶ Great location in inside the Perimeter with direct access to I-85, and less than 2 miles to I-285.



1600 NORTHSIDE DRIVE NW  
Suite 100  
ATLANTA, GA 30318  
404.352.1882  
WHNRE.COM

Preston Pannell | Associate  
C: 404.877.2178  
ppannell@whnre.com

# 3115 Marjan Drive | Doraville, GA 30340



Scale 1/4" = 1' - 0"

Office 335 SF

Total 2,333 RSP



1600 NORTHSIDE DRIVE NW  
Suite 100  
ATLANTA, GA 30318  
404.352.1882  
WHNRE.COM

Preston Pannell | Associate  
C: 404.877.2178  
ppannell@whnre.com

# 3115 Marjan Drive | Doraville, GA 30340

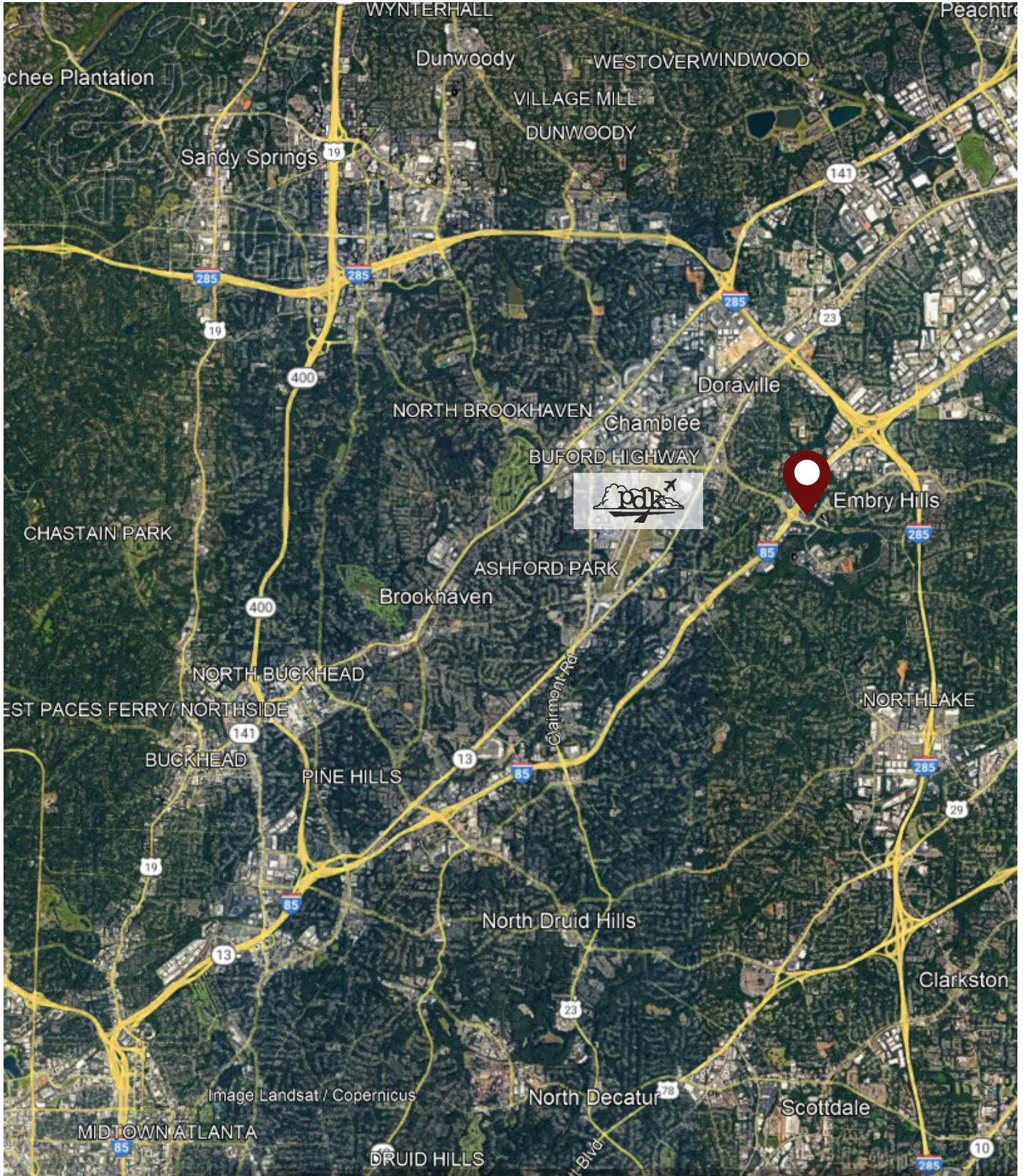


1600 NORTHSIDE DRIVE NW  
Suite 100  
ATLANTA, GA 30318  
404.352.1882  
WHNRE.COM

Preston Pannell | Associate  
C: 404.877.2178  
ppannell@whnre.com

Every effort has been made to provide accurate information, but no liability is assumed for errors or omissions.

# 3115 Marjan Drive | Doraville, GA 30340



1600 NORTHSIDE DRIVE NW  
Suite 100  
ATLANTA, GA 30318  
404.352.1882  
WHNRE.COM

Preston Pannell | Associate  
C: 404.877.2178  
ppannell@whnre.com

Every effort has been made to provide accurate information, but no liability is assumed for errors or omissions.