



COMMERCIAL REAL ESTATE

\$2,100/mo.

Rental Area: 880 Sq. Ft.

Year Built: 1986

Discover the charm of this 1st floor office space nestled in the heart of Central Park in Huntsville. This prime location offers convenience, being just a stone's throw away from downtown Huntsville and in close proximity to Redstone Arsenal.

The office space itself is a blend of modern functionality and classic elegance. Each office is designed with attention to detail, ensuring a comfortable and efficient work environment. The location, coupled with the tasteful updates, makes this office space an ideal choice for businesses.



**1ST FLOOR OFFICE
SPACE AVAILABLE!**

**2311 Market Place
Suite C
Huntsville, Alabama 35801**

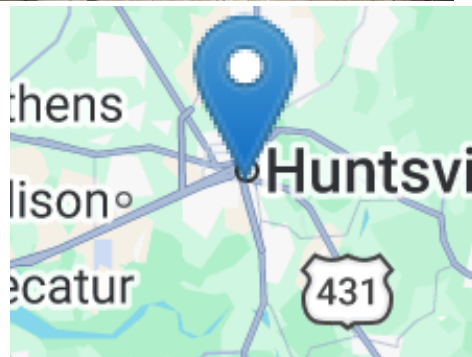
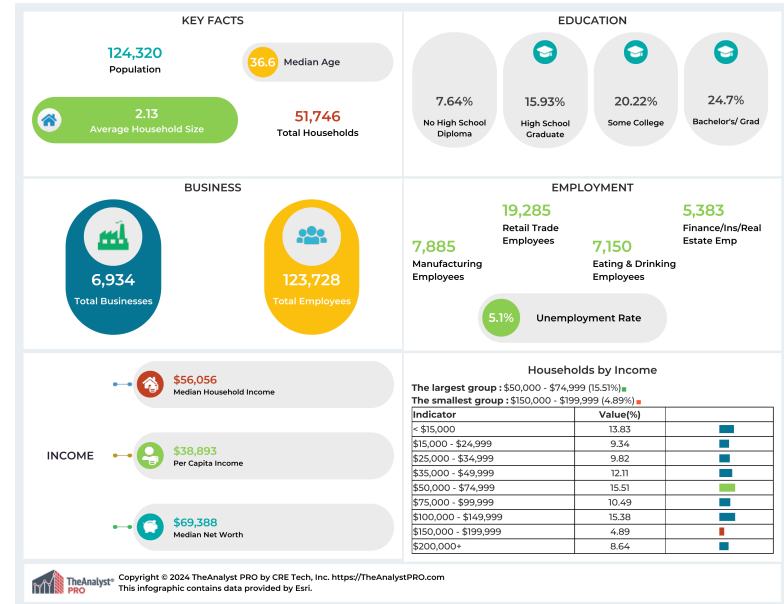
Contact:

**RUSS RUSSELL
CCIM**

256-536-7777

russ@russrussell.com

SPACE FOR RENT



This information has been obtained from sources believed reliable. We have not verified it and make no guarantee, warranty or representation about it. Any projections, opinions, assumptions or estimates used are for example only and do not represent the current or future performance of the property. You and your advisors should conduct a careful, independent investigation of the property to determine to your satisfaction the suitability of the property for your needs. Photos herein are the property of their respective owners and use of these images without the express written consent of the owner is prohibited.



Contact:
RUSS RUSSELL
 CCIM
256-536-7777