

SALE

5 EXECUTIVE CT, SUITE 1
5 Executive Court, Suite 1 South Barrington, IL 60010



PROPERTY DESCRIPTION

Presenting an exceptional opportunity in South Barrington's Executive Center complex, this medical office space offers a turnkey healthcare office. 1,912 square feet, this unit features to meet the demands of modern medical practice. Currently five exam rooms, 1 of them is used as a treatment room, large waiting area, two private offices, kitchenette, nurse station, two restrooms, and a large reception area. Full ADA compliant office. Don't miss this rare opportunity to acquire a turnkey medical facility in one of South Barrington's most coveted locales, 1 mile from Expressway I90 and Ascension St Alexius Medical Center. New Roof

PROPERTY HIGHLIGHTS

- Property Taxes(2025): \$14,513.49
- Association: \$423.07/mth

Lisa Perry-Gagliano
(773) 818-1888

OFFERING SUMMARY

Sale Price:	\$440,000
Building Size:	1,912 SF

DEMOGRAPHICS	0.3 MILES	0.5 MILES	1 MILE
Total Households	24	94	394
Total Population	75	291	1,219
Average HH Income	\$229,748	\$231,652	\$228,416



SALE

5 EXECUTIVE CT, SUITE 1

5 Executive Court, Suite 1 South Barrington, IL 60010



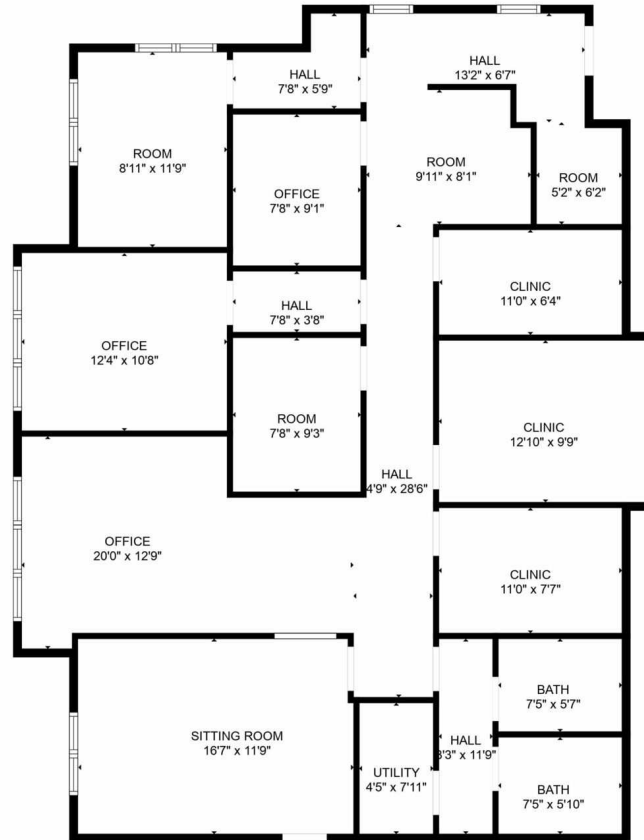
Lisa Perry-Gagliano
(773) 818-1888



SALE

5 EXECUTIVE CT, SUITE 1

5 Executive Court, Suite 1 South Barrington, IL 60010



FLOOR PLAN CREATED BY CUBICASA APP. MEASUREMENTS DEEMED HIGHLY RELIABLE BUT NOT GUARANTEED.

Lisa Perry-Gagliano
(773) 818-1888

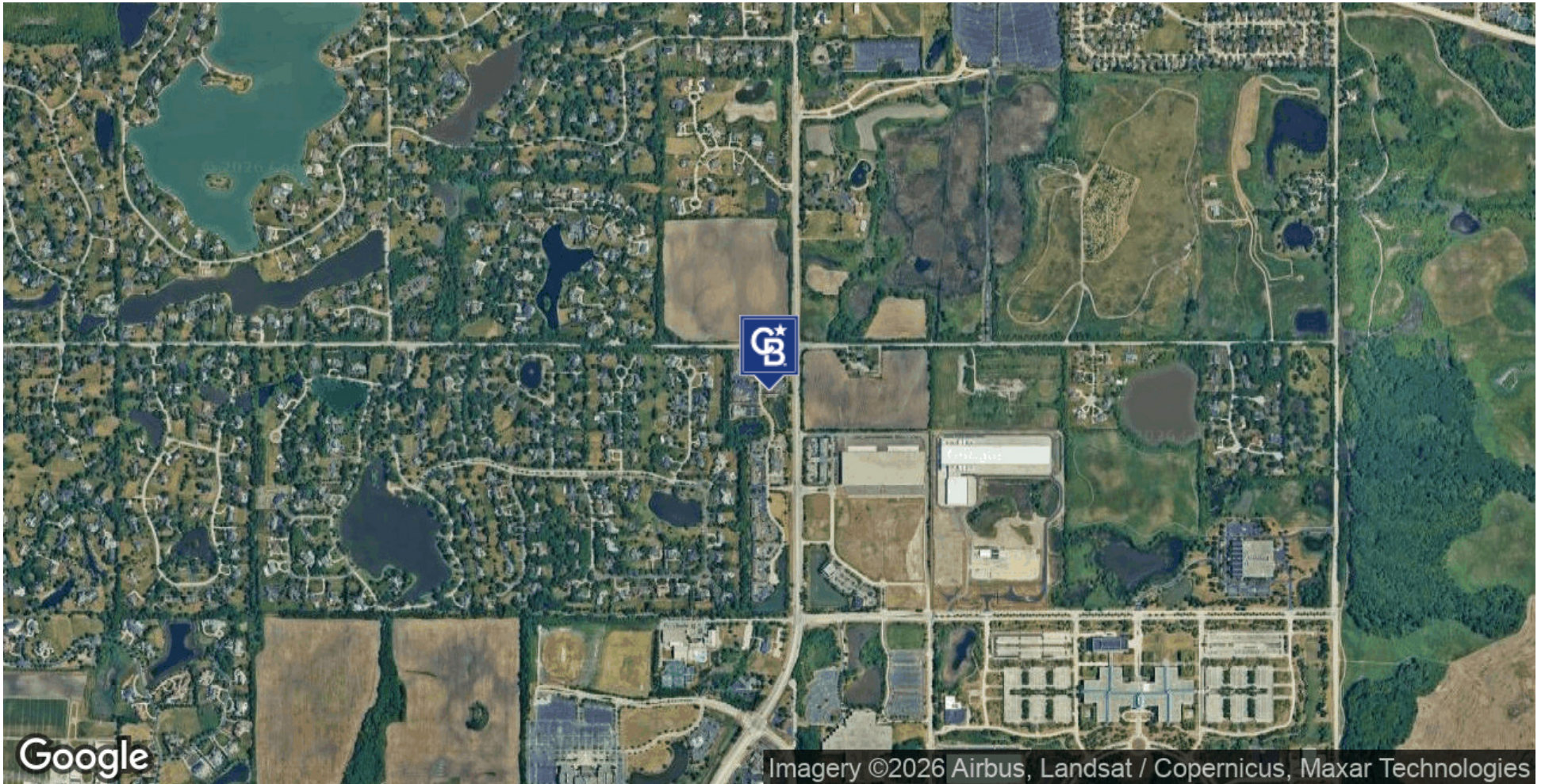


COLDWELL BANKER
COMMERCIAL
REALTY

SALE

5 EXECUTIVE CT, SUITE 1

5 Executive Court, Suite 1 South Barrington, IL 60010



Lisa Perry-Gagliano

(773) 818-1888



COLDWELL BANKER
COMMERCIAL
REALTY

SALE

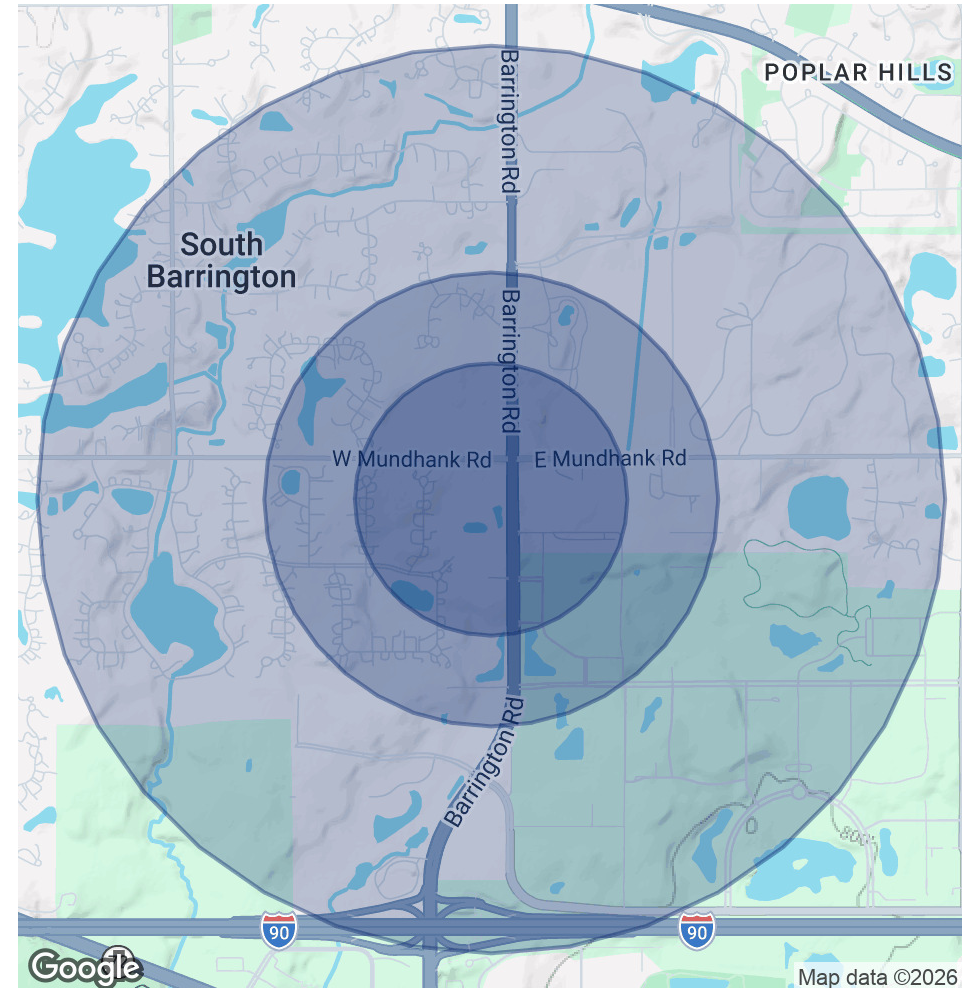
5 EXECUTIVE CT, SUITE 1

5 Executive Court, Suite 1 South Barrington, IL 60010

POPULATION	0.3 MILES	0.5 MILES	1 MILE
Total Population	75	291	1,219
Average Age	44	44	44
Average Age (Male)	44	44	43
Average Age (Female)	45	45	44

HOUSEHOLDS & INCOME	0.3 MILES	0.5 MILES	1 MILE
Total Households	24	94	394
# of Persons per HH	3.1	3.1	3.1
Average HH Income	\$229,748	\$231,652	\$228,416
Average House Value	\$1,015,673	\$1,064,688	\$1,017,777

2020 American Community Survey (ACS)



Lisa Perry-Gagliano
(773) 818-1888

