

Mid Pinellas
Industrial/Flex Space
100% climate controlled

FOR LEASE



**8575 SOMERSET DRIVE
LARGO, FL 33773**

8,700-SF total with 500-SF office

• **\$12.50 PSF NNN**



VECTOR
COMMERCIAL REAL ESTATE

www.VectorRealty.com
125 5th Street South Suite 201
Staint Petersburg, Florida 33704
727-823-1230



Ned Willis
NWillis@VectorRealty.com
(727) 481-3356



Ashley Willis
AWillis@VectorRealty.com
(727) 776-0290

EXECUTIVE SUMMARY

**Mid Pinellas 100%
climate-controlled space
conveniently located between
Bryan Dairy Rd. and Ulmerton
Rd. just East of Starkey Rd.
Ideally suited for warehousing
and distribution.**

**The space is in excellent
condition and features a small
500-SF office area, and 8,200
SF of open warehouse space.**

**The warehouse clear height is
26' at the peak and 17' at the
eaves with 1 truck well, 1
grade-level door, and LED
lighting.**



LEASE RATE
\$12.50 PSF NNN



LOCATION
8575 Somerset Drive
Largo, FL 33773



SIZE
8,700-SF TOTAL
• 500-SF OFFICE



FFEATURES
1 Truck Well
1 Grade Level Door
LED Lighting
100% Climate Controlled



BUILDING
26' Clear Height
at Peak



PARKING
20 Parking Spaces



USE
Industrial/
Warehouse
Flex



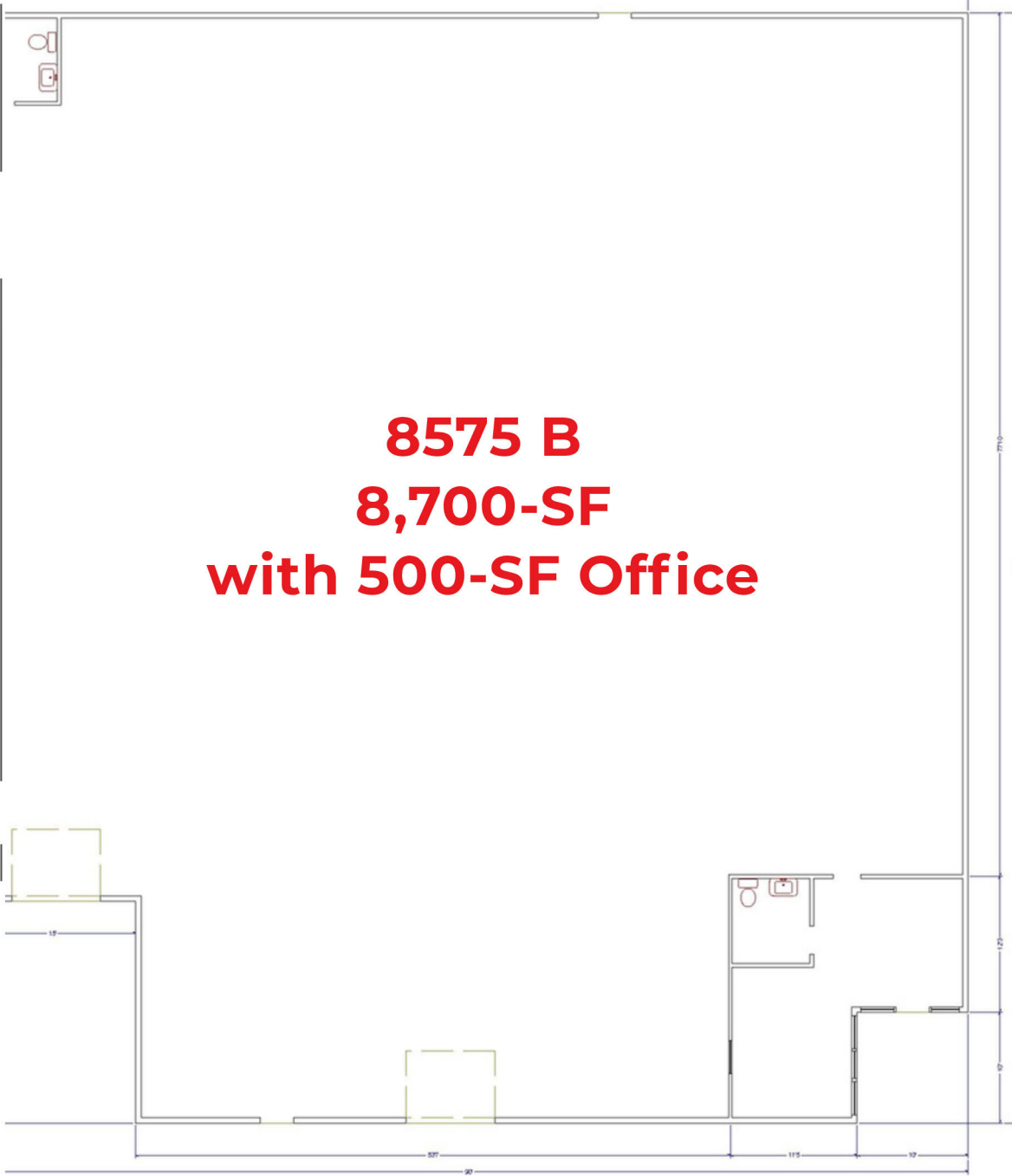
8575 Somerset Drive
Largo, FL 33773



8575 Somerset Drive
Largo, FL 33773

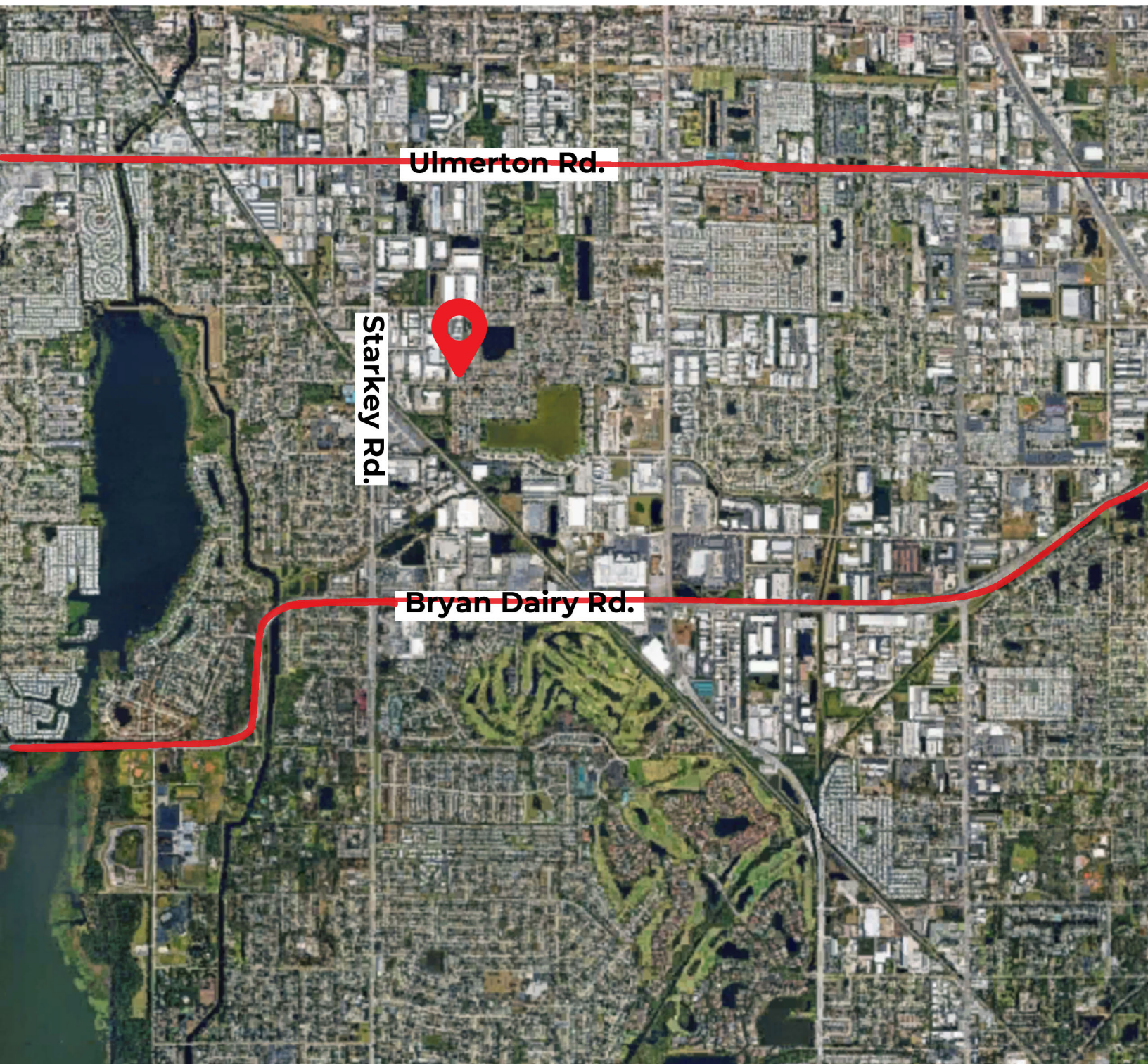
Floor Plan

8575 B
8,700-SF
with 500-SF Office



8575 Somerset Drive
Largo, FL 33773

Market Map



VECTOR
COMMERCIAL REAL ESTATE

Vector Commercial Real Estate Services, LLC is a licensed Real Estate Brokerage. No warranties or representations, express or implied, are made as to the accuracy of the information contained herein, and same is submitted subject to omissions, changes of price, rental or other conditions, withdrawal without notice, and to any other limitations imposed by our principals.