

GATEWAY MEDICAL PLAZA

MARGATE, FLORIDA

**CLASS 'A'
MEDICAL**

PRIVATE ENTRY

COVERED PARKING

MONUMENT SIGNAGE

ONE SUITE REMAINING – MAKE A MOVE

3,608 RSF

AMPLE
PARKING

AVG HH INCOME



1 Mile | \$74,954

3 Mile | \$78,338

5 Mile | \$76,607

POPULATION



1 Mile | 17K

3 Mile | 152K

5 Mile | 357K



Florida Medical Space
Licensed Florida Real Estate Broker

CONTACT US

561-980-3618

TOMMY ADAMS

NEED SPACE? GOT SPACE?

WWW.FLORIDAMEDSPACE.COM

PRIME REGIONAL HEALTHCARE HUB

GATEWAY MEDICAL PLAZA – MARGATE, FLORIDA



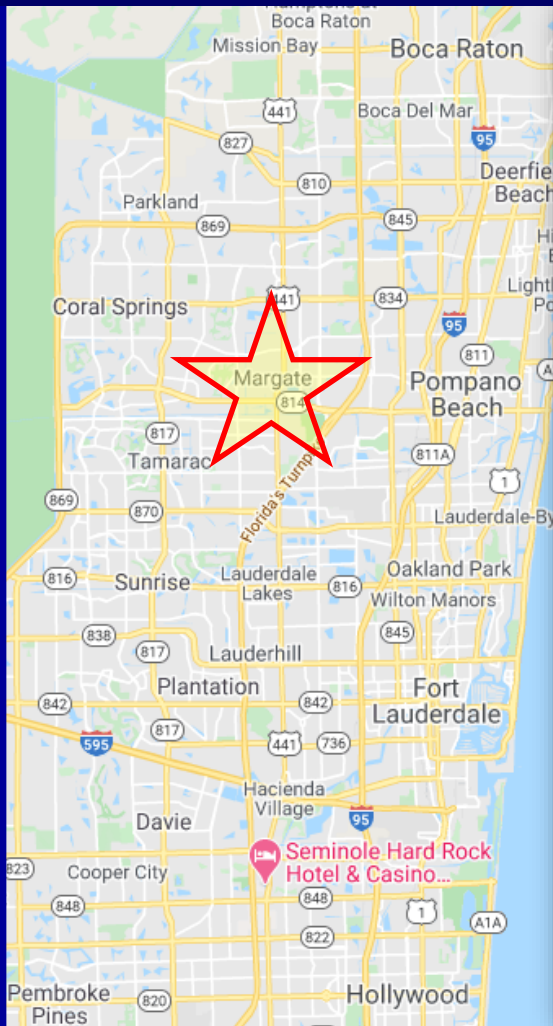
CENTRALLY LOCATED

- ◆ BOCA RATON & PARKLAND
- ◆ CORAL SPRINGS & POMPANO
- ◆ PLANTATION & FT. LAUDERDALE
- ◆ SAWGRASS EXPY & FL TURNPIKE
- ◆ SW QUADRANT OF 441 & SAMPLE



*AROUND THE CORNER FROM
WHEREVER YOU ARE.*

IN THE HEART OF BROWARD COUNTY



1 Mile Radius

ATTRACT PATIENTS REGIONALLY

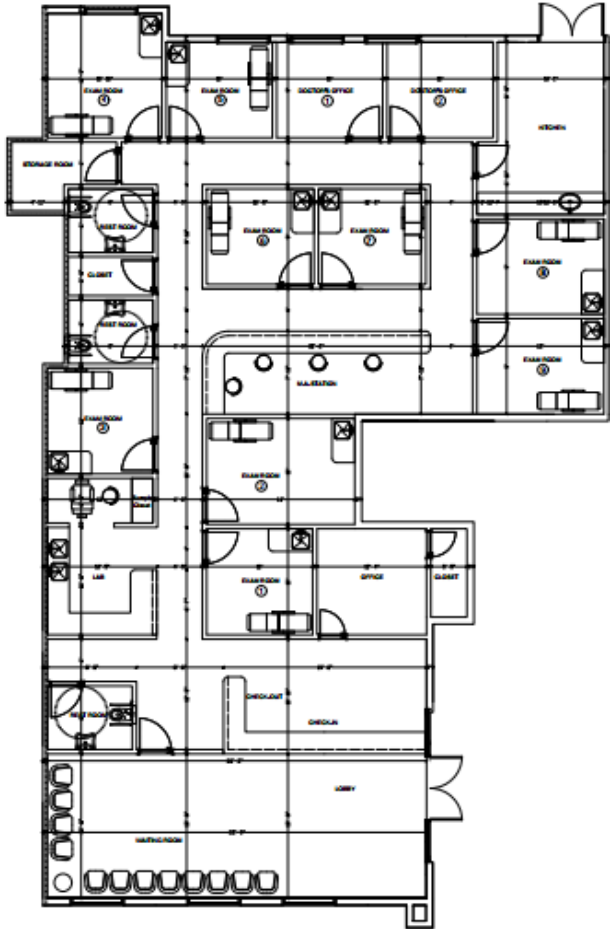
GATEWAY MEDICAL PLAZA

3251 N. State Road 7, Margate, Florida



SUITE 120

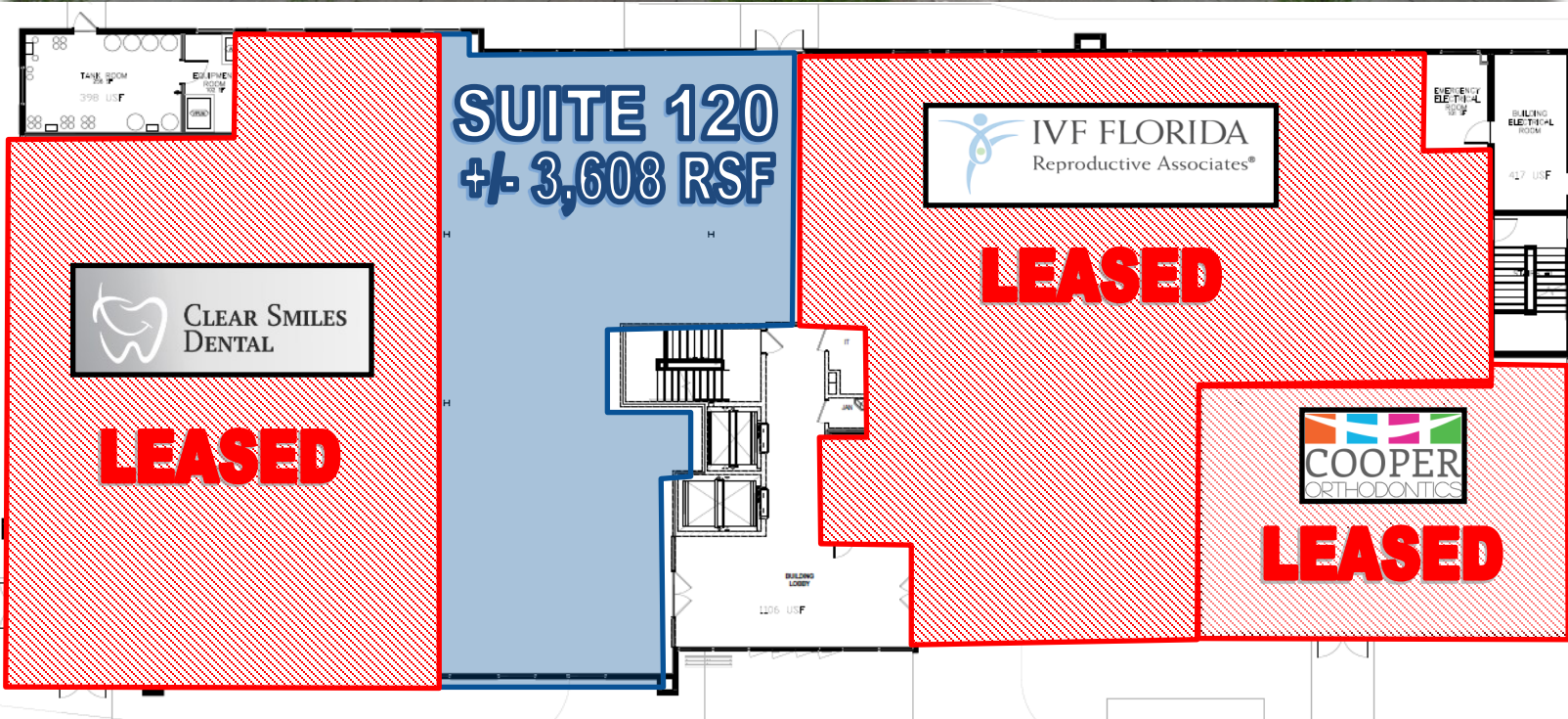
- ◆ UP TO 3,608 SQ FT
- ◆ COVERED PARKING
- ◆ PYLON SIGNAGE
- ◆ LOBBY ENTRY



CALL NOW! (561) 980-3618

GATEWAY MEDICAL PLAZA

GROUND FLOOR- SUITE 120



CALL FOR A TOUR

561-980-3618

TOMMY ADAMS

NEED SPACE? GOT SPACE?

WWW.FLORIDAMEDSPACE.COM