

# 24445 Northwestern Hwy

Southfield, MI

- Up to 6,317 Square Feet Available
- Fully Renovated Building
- Professionally Owned & Managed
- Fantastic Highway Exposure/Access
- Building Signage Available
- Common Café & Training Room
- Convenient Parking
- Best Rental Value in Southfield

## OFFICE BUILDING FOR LEASE

### FOR MORE INFORMATION:

Aaron Smith  
Vice President  
248.637.3515  
asmith@LMCap.com

Mike Elle  
Sales Associate  
248.637.3526  
melle@LMCap.com

248.637.9700 | [LMCap.com](http://LMCap.com)

Information contained herein was obtained from sources deemed to be reliable but is not guaranteed. Subjects to prior sales, changes of price or withdrawal.



**L. MASON CAPITANI**  
CORFAC INTERNATIONAL

# 24445 Northwestern Hwy

Southfield, MI

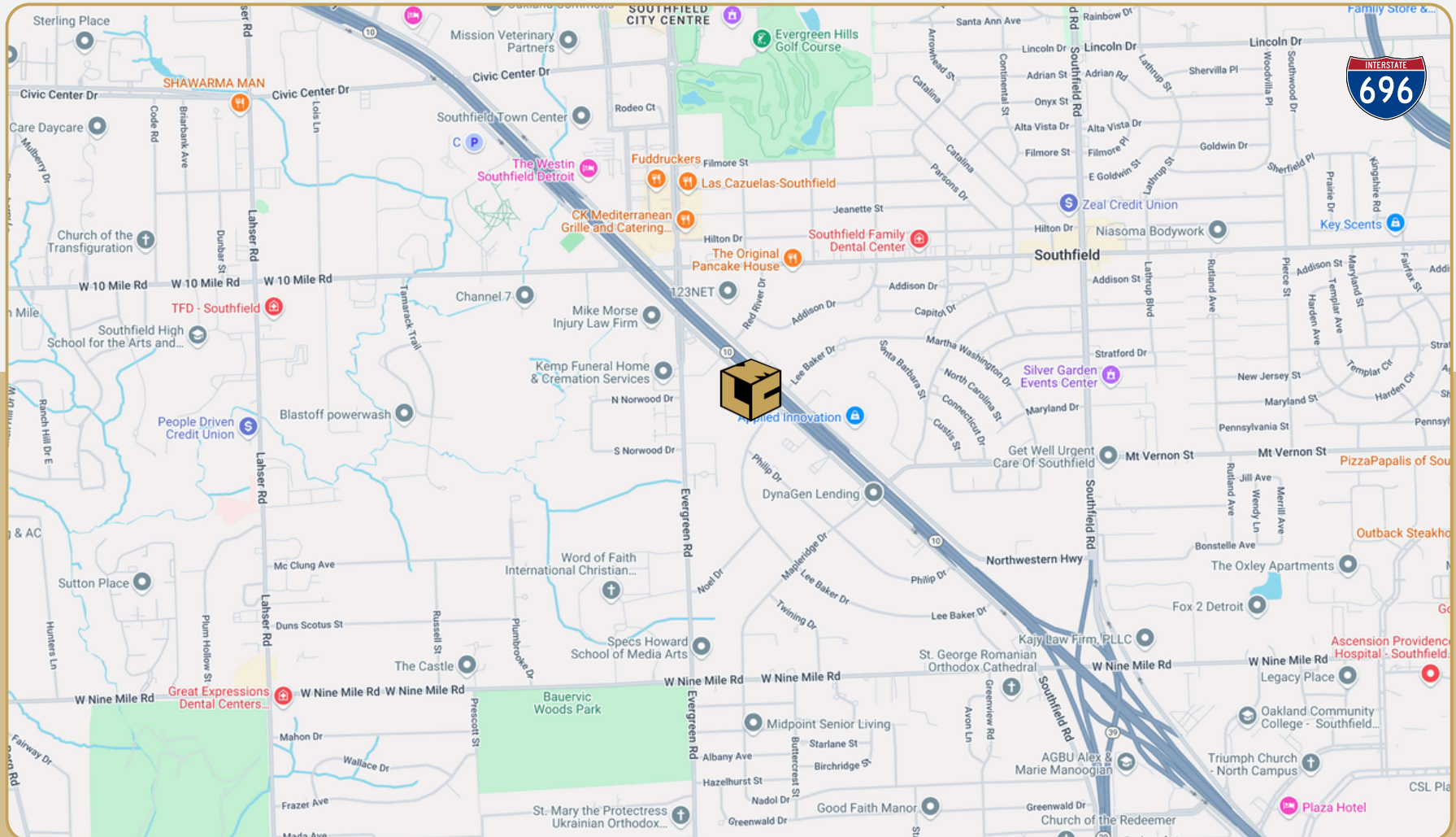


248.637.9700 | LMCap.com

Information contained herein was obtained from sources deemed to be reliable but is not guaranteed. Subjects to prior sales, changes of price or withdrawal.

# 24445 Northwestern Hwy

Southfield, MI



248.637.9700 | LMCap.com

Information contained herein was obtained from sources deemed to be reliable but is not guaranteed. Subjects to prior sales, changes of price or withdrawal.

# 24445 Northwestern Hwy

Southfield, MI



## Office Property Details:

### Details:

**Location Description:** S of Evergreen Road  
**Building Type:** Office  
**Class:** B  
**Zoning:** Office  
**Floors:** 2  
**Year Built:** 1974  
**Year Rennovated:** 2018  
**Gross SF:** 69,580 SF  
**Total Rentable SF:** 69,580 SF  
**Available SF:** 19,901 SF  
**Min/Max SF:** 1,932 SF - 6,317 SF  
**Acres:** 3.44  
**Multientant:** Yes  
**Parcel ID:** 24-26-151-015

**Property Description:** Professionally owned and managed multi-tenant office building featuring recently renovated common areas, shared conference and break rooms. Central geographic location with quick access to all major freeways.

### Economic:

**Min/Max Rental Rate:** \$12.50 SF  
**Rental Terms:** + Electric  
**Annual Escalations:** \$0.50/SF  
**Occupancy:** Immediate  
**Parking:** 282 Spaces  
**Partition Allowance:** Negotiable  
**Signage:** Negotiable  
**Status:** Existing

# 24445 Northwestern Hwy

Southfield, MI



## Available Suites:

**Suite 106:** 6,317 SF

**Suite 205:** 3,643 SF

**Suite 206:** 2,623 SF

**Suite 205/206:** 6,266 SF

**Suite 208:** 1,932 SF

**Suite 230:** 3,931 SF



248.637.9700 | LMCap.com

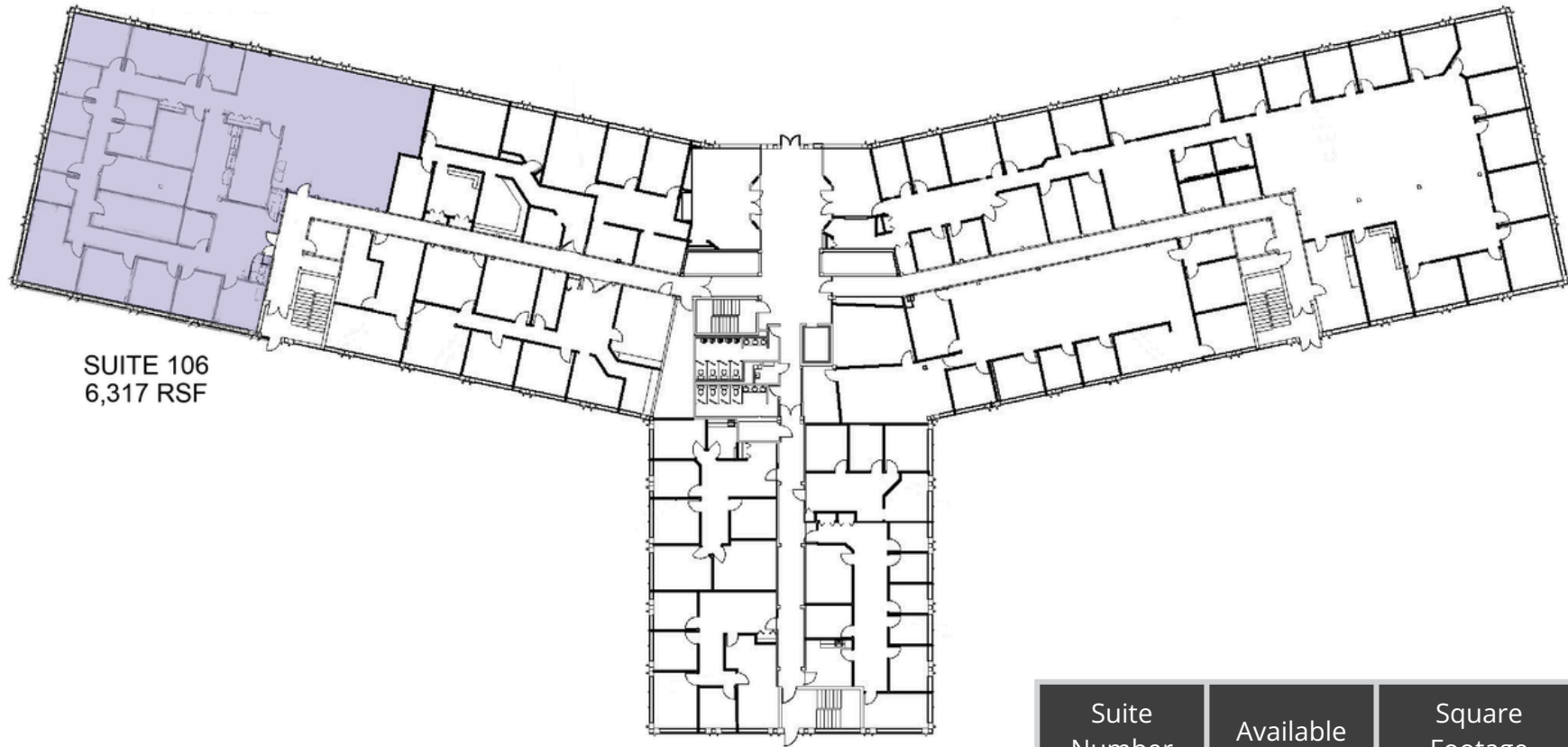
Information contained herein was obtained from sources deemed to be reliable but is not guaranteed. Subjects to prior sales, changes of price or withdrawal.

# 24445 Northwestern Hwy

Southfield, MI



## First Floor Vacancies



SUITE 106  
6,317 RSF

Suite Number	Available	Square Footage
106	Imm.	6,317 SF

248.637.9700 | LMCap.com

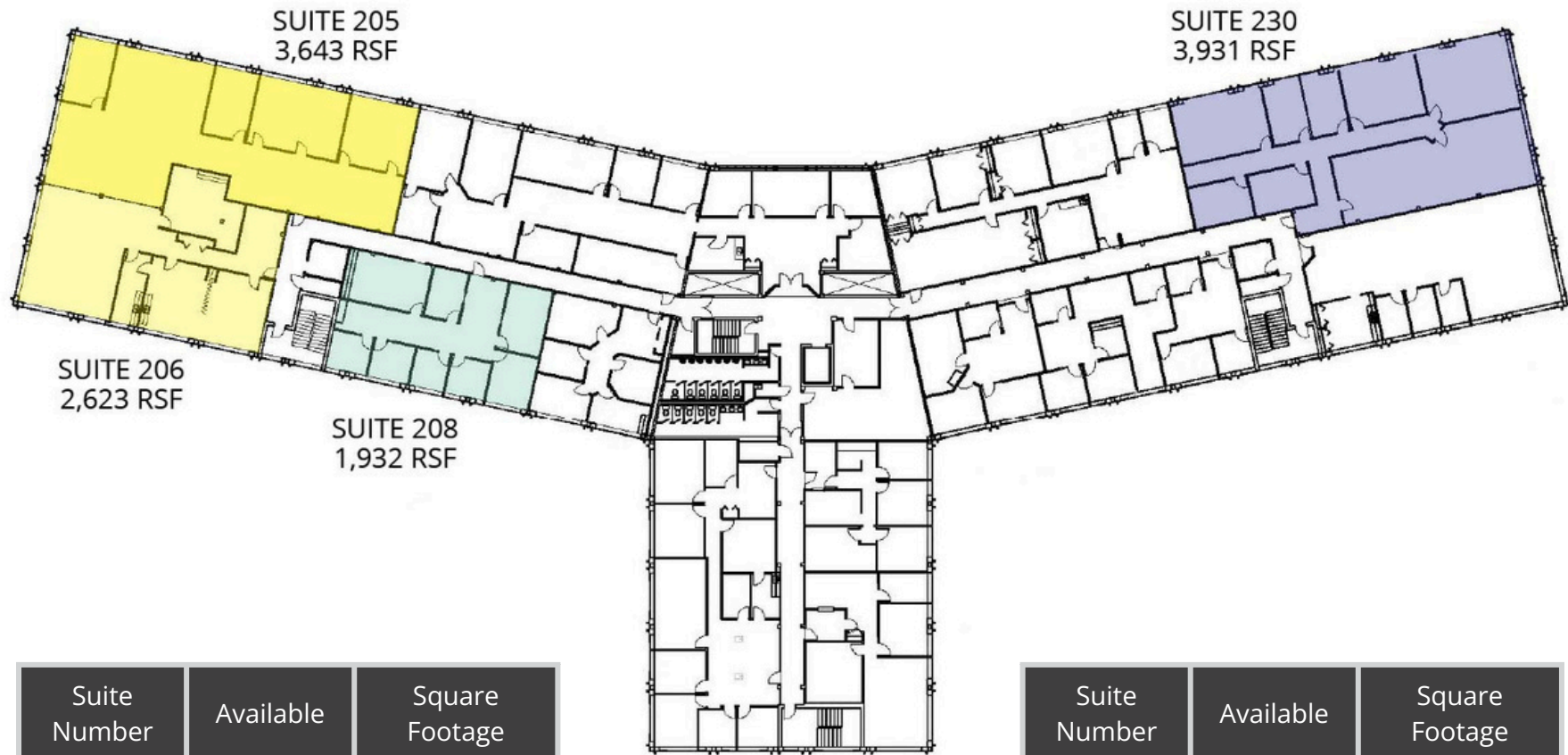
Information contained herein was obtained from sources deemed to be reliable but is not guaranteed. Subjects to prior sales, changes of price or withdrawal.

# 24445 Northwestern Hwy

Southfield, MI



## Second Floor Vacancies



Suite Number	Available	Square Footage
205	Imm.	3,643 SF
206	Imm.	2,623 SF
205/206	Imm.	2,623-6,266 SF

Suite Number	Available	Square Footage
208	3/30/2026	1,932 SF
230	Imm.	3,931 SF

248.637.9700 | LMCap.com

Information contained herein was obtained from sources deemed to be reliable but is not guaranteed. Subjects to prior sales, changes of price or withdrawal.