



think COMMERCIAL
REAL ESTATE

FOR SALE

RARE SE STARK CORRIDOR INVESTMENT OPPORTUNITY
TWO BUILDINGS, ENDLESS UPSIDE

17641-17645 SE Stark Street, Gresham, OR 97233

HOPE BERAKA | hope@think-portland.com | 503-679-9243

PROPERTY OVERVIEW

17641-17645 SE STARK ST. GRESHAM, OR 97233

Welcome to a rare opportunity on SE Stark, offered at \$699,000 with seller-carried financing available for the right buyer.

Located in the heart of the Rockwood neighborhood in unincorporated Multnomah County, this two-building commercial property sits on one of the East County's busiest and most-traveled corridors — and that means visibility, foot traffic, and convenience your business and tenants will love. Just minutes from I-205 and Highway 26, a quick hop to downtown Gresham, and an easy commute into Portland. TriMet's MAX Blue Line and frequent bus service are right around the corner, making this a genuinely accessible location for customers, employees, and tenants alike.

Whether you're an owner-user looking to plant roots, an investor hunting for steady income, or a long-game land player betting on the corridor's future, this property has something for you. The site features two separate commercial buildings plus a garage, sitting on a 7,823 SF lot with strong frontage and visibility along SE Stark. Worth taking a look at, as opportunities like this in this area don't come around often.





Address: 17641-17645 SE Stark St. Gresham, OR 97233

Asking Price: \$740,000

Tenant: Luxotron Tattoo+Day Spa

Building Size: 2,060 SqFt

Lot Size: 7,823 SqFt

Zoning: CMU

Tax Lots: R496169

Year Built: 1979

Taxes: \$3,428.37

Parking: Private Parking Lot 12+ Spots

- Seller carried financing available for a qualified buyer
- Two commercial units offer a flexible footprint for owner-users or pure investment plays
- Separate garage provides bonus storage, workshop, or supplemental rental potential
- Small-scale retail and service-oriented commercial
- Office and professional space
- Moderate-density residential
- Mixed-use development (commercial ground floor with residential above)
- Future land play — well-positioned for redevelopment as the SE Stark corridor densifies
- The property sits within Corridor Mixed Use (CMU) zoning, one of the most flexible designations in the area.



LOTUS
FOR RENT

TATTOO
BY APPOINTMENT




DEMOGRAPHICS INFO

17641-17645 SE STARK ST. GRESHAM, OR 97233

97233 POPULATION

TOTAL POPULATION	41,625
MEDIAN AGE	34
COLLEGE GRADUATE	18.9%
UNEMPLOYMENT RATE	6.5%

97233 HOUSEHOLD & INCOME

	TOTAL HOUSEHOLDS	14,283
	#OF PERSON PER HH	2.87
	AVERAGE HH INCOME	\$74,508

97233 BUSINESS SUMMARY AND HOUSEHOLD SPENDING

\$78K

Annual HH
Spending

672

Total Business

97233 HOUSING AND COST OF LIVING

\$414,600

Median Home
Value

103.6

Cost of Living Index
(above U.S. Average)



Walk Score
80



Bike Score
82



Transit Score
55



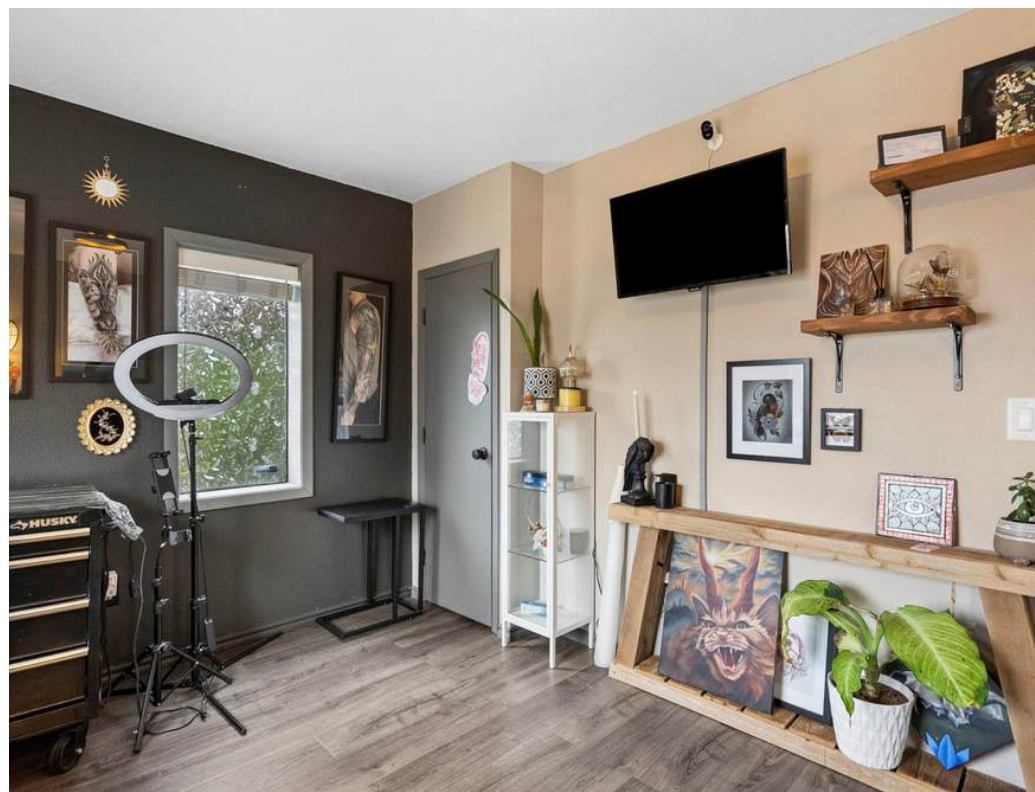
Located near restaurants,
shops, and schools.



BUILDING #1

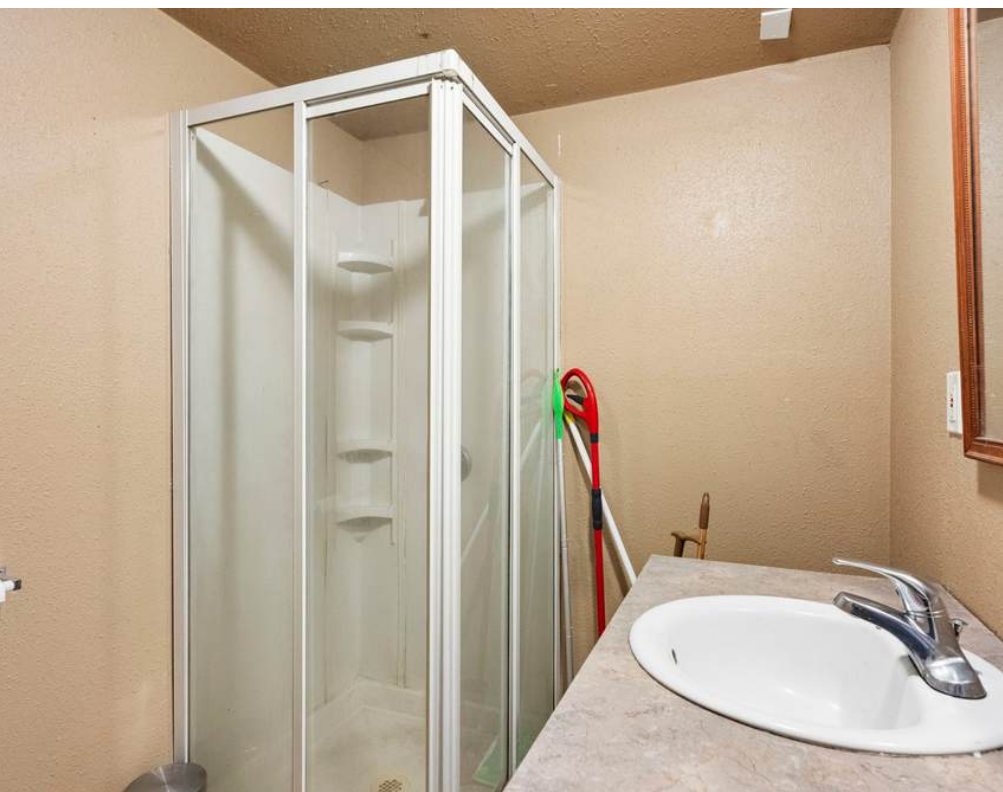
































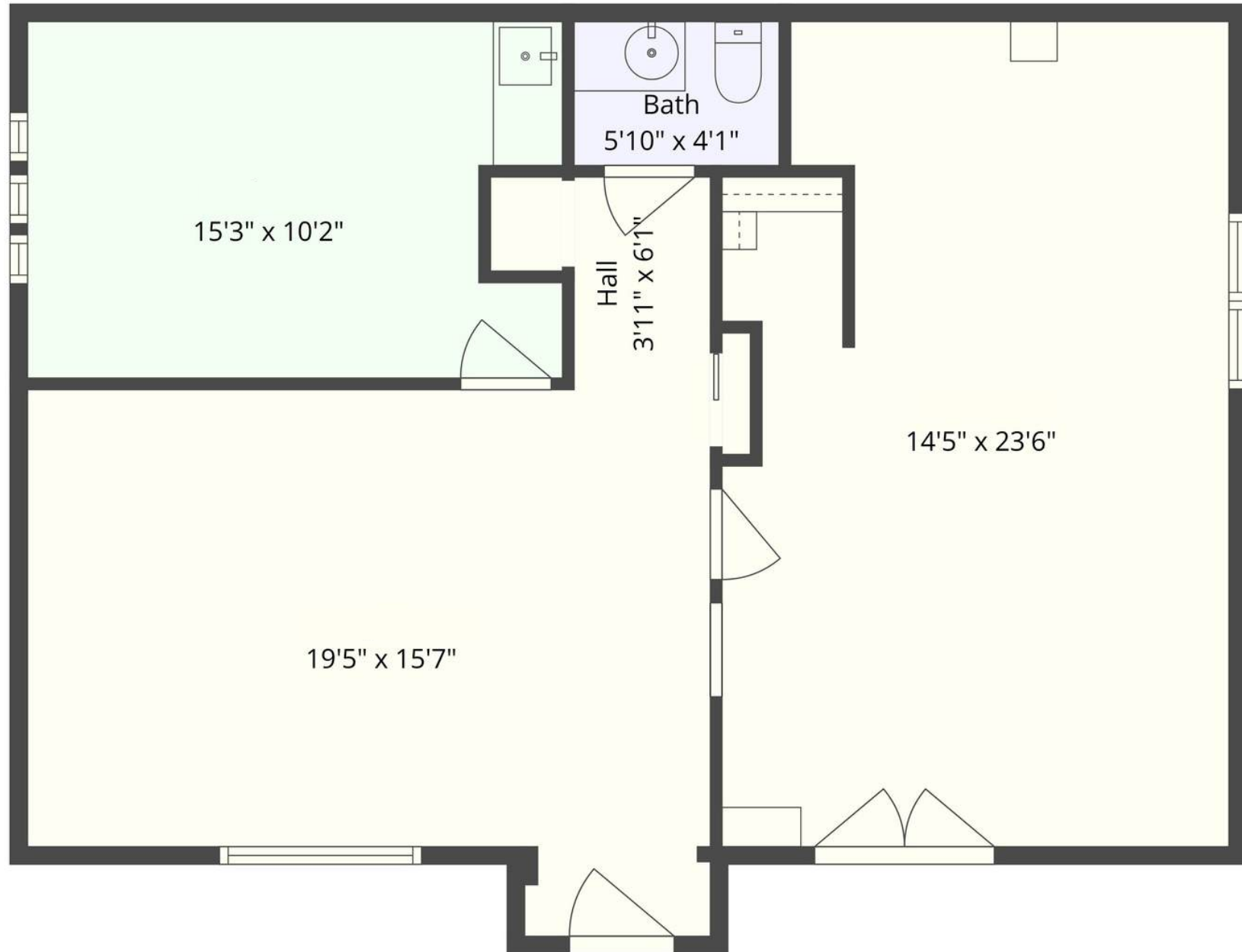
FLOOR PLAN BLDG. #1

17641-17645 SE STARK ST. GRESHAM, OR 97233



FLOOR PLAN BLDG. #2

17641-17645 SE STARK ST. GRESHAM, OR 97233



think COMMERCIAL

REAL ESTATE

HOLISTIC. TENACIOUS. SMART.
CLIENT FOCUSED.

HOPE BERAKA | hope@think-portland.com | 503-679-9243

212 SE 18th Ave. Portland, OR 97214 | www.think-commercial.com

Disclaimer: This information has been secured from sources we deem to be reliable. But we make no representation or warranties, expressed, or implied as to the accuracy of the information. References to square footage or age are approximate. The buyer must verify the information.