

FOR LEASE

**7,180 sq ft**

340 March Road, Suite 600

Kanata, ON



**KRP Properties**  
555 Legget Drive, Suite 300  
Ottawa, ON K2K 2X3

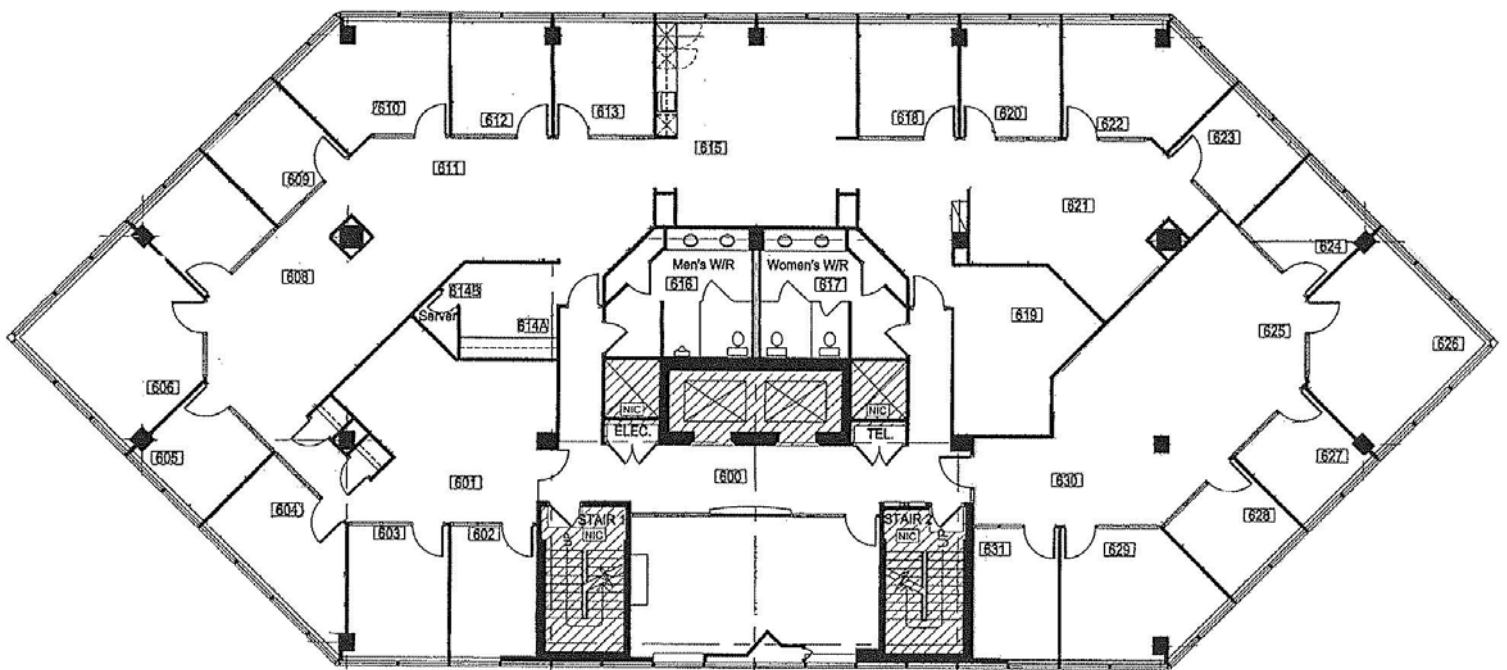
**Linda Sprung, Vice President, Leasing & Marketing**  
[t] 613-591.0594 x3280  
[e] [lsprung@krpproperties.com](mailto:lsprung@krpproperties.com)

# FOR LEASE

**7,180 sq ft**

340 March Road, Suite 600

Kanata, ON



- > Full floor
- > Multiple offices and boardrooms
- > Large bright space with floor to ceiling windows
- > Stunning views of the Gatineau Hills and Downtown Ottawa
- > Building signage available
- > Free surface parking

- > Outdoor bike storage
- > Access to common showers

\*Operating costs and taxes: \$18.79/ sq ft (estimate for 2023)

FOR LEASE

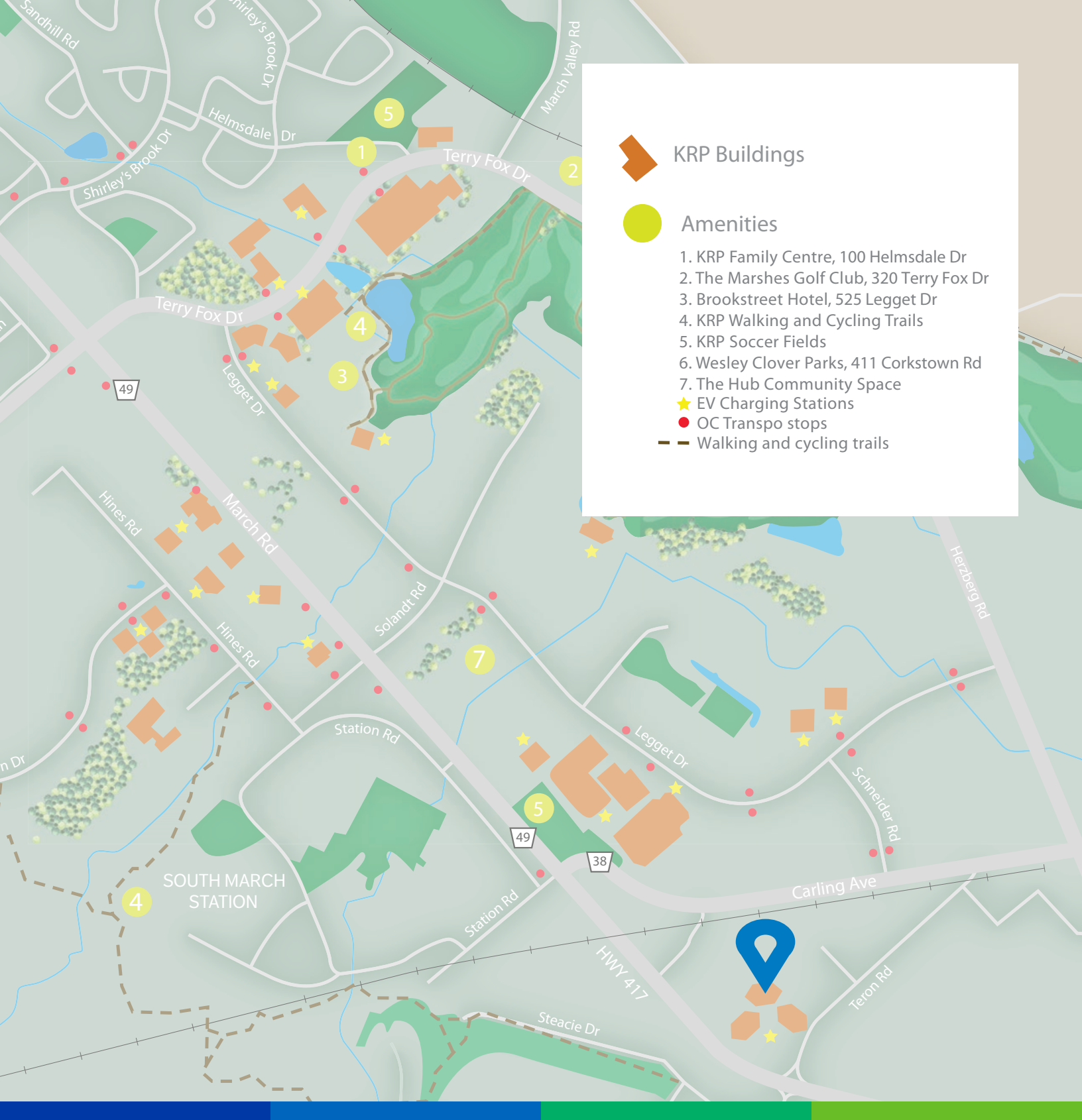
7,180 sq ft

340 March Road, Suite 600  
Kanata, ON



KRP Properties  
555 Legget Drive, Suite 300  
Ottawa, ON K2K 2X3

Linda Sprung, Vice President, Leasing & Marketing  
[t] 613.591.0594 x3280  
[e] lsprung@krpproperties.com



**KRP Buildings**

**Amenities**

1. KRP Family Centre, 100 Helmsdale Dr
2. The Marshes Golf Club, 320 Terry Fox Dr
3. Brookstreet Hotel, 525 Legget Dr
4. KRP Walking and Cycling Trails
5. KRP Soccer Fields
6. Wesley Clover Parks, 411 Corkstown Rd
7. The Hub Community Space

★ EV Charging Stations  
 ● OC Transpo stops  
 - - - Walking and cycling trails

### HOW YOU'LL BENEFIT AT EACH OF KRP'S BUILDINGS

- ✓ Easy access to and from the 417
- ✓ On-street access to bus service (routes 63, 64, 66, 166, 266) and proximity to two OC Transpo stations
- ✓ Free on-site parking
- ✓ Proximity to banks, grocery stores, fitness centres, restaurants and other retail
- ✓ Located near the City of Ottawa and NCC-maintained walking trails
- ✓ Access to discounts at local businesses with a KRP Advantage Card including Brookstreet and Marshes Golf Club