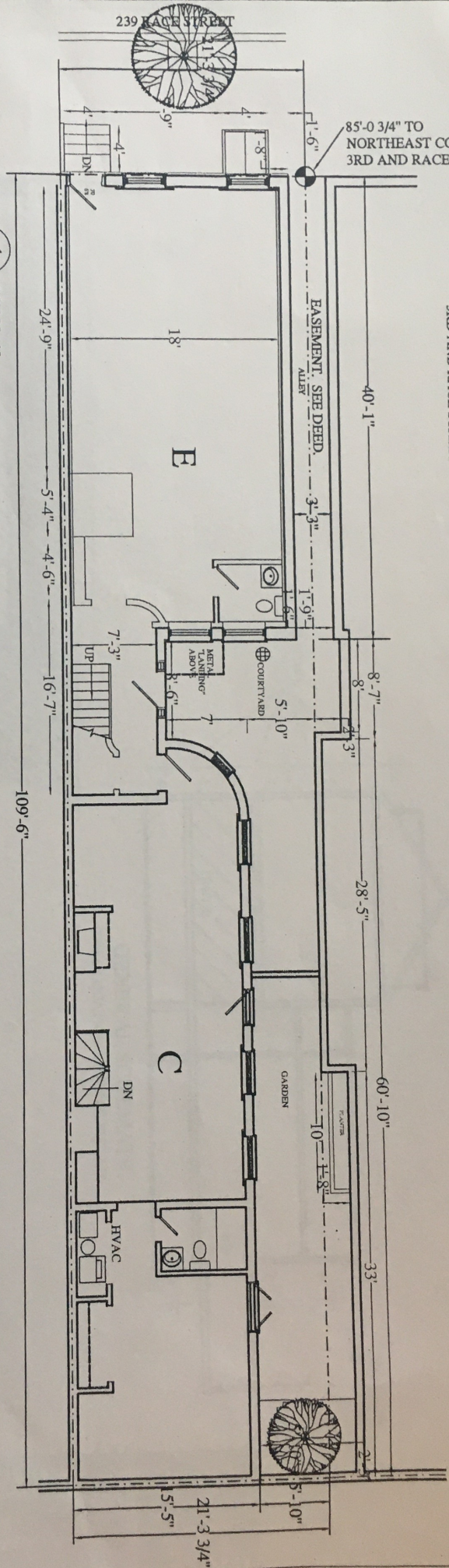


NOTE: ALL HORIZONTAL DIMENSIONS
TAKEN FROM NORTHEAST CORNER
3RD AND RACE STREET

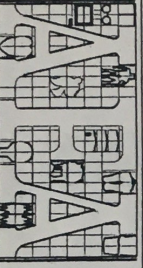


ALL THAT CERTAIN LOT OR PIECE OF GROUND WITH THE BUILDINGS AND IMPROVEMENTS THEREON ERECTED,
SITUATE ON THE NORTH SIDE OF RACE STREET AT THE DISTANCE OF 85 FEET AND 3/4 OF AN INCH EASTWARD FROM THE EAST SIDE OF 3RD STREET IN THE 5TH WARD OF THE CITY OF PHILADELPHIA
CONTAINING IN FRONT OR BREADTH ON THE SAID RACE STREET 21 FEET 3 AND 3/4 INCHES MORE OR LESS, INCLUDING ON THE WEST SIDE THEREOF A MOEITY OF 1/2 PART OF THE SOIL OF A CERTAIN 3 FEET 3 INCHES WIDE ALLEY; AND EXTENDING OF THAT WIDTH IN LENGTH OR DEPTH NORTHWARD 109 FEET 6 INCHES.
TOGETHER WITH THE FREE AND COMMON USE, RIGHT, LIBERTY AND PRIVILEGE OF THE AFORESAID 3 FEET 3 INCHES WIDE BUILT OVER ALLEY LAID OUT BETWEEN THESE PREMISES AND PREMISES ADJOINING ON THE WEST, AND WITH THE FREE INGRESS AND EGRESS ALONG THE SAME, IN COMMON WITH THE OWNERS, TENANTS AND OCCUPIERS OF THE OTHER LOTS OF GROUND ADJOINING ON THE WEST AND ENTITLED TO THE USE THEREOF.

ALLEY FRIENDS ARCHITECTS

239 RACE STREET
PHILADELPHIA, PA 19106

309 N. FRONT ST.
PHILADELPHIA, PA 19106
215-922-3554
FAX # 922-7742



ALAN CHARLES MARON, P.A.
PA. NO. RA 09945-X
NJ. NO. AI 09887

DO NOT SCALE
DRAWINGS

REVISIONS

NO.	DATE	BY	REVISIONS

DATE: 7-02-03
DRAWN BY: [blank]
CHECKED BY: [blank]
APP. 301

SITE PLAN

A-1