

GORDON
COMMERCIAL REAL ESTATE BROKERAGE

FOR SALE :: 1409-1415 MARTIN LUTHER KING JR. WAY, BERKELEY, CA

RARE NEIGHBORHOOD COMMERCIAL BUILDING, OFF CORNER OF MLK AND ROSE STREET



CONTACT: LORI ROSENTHAL 510 524-2344 • lori@gordoncommercial.com • DRE# 01946676

EXCELLENT VISIBILITY – NEAR HIGH-VEHICLE COUNT, SIGNALIZED CORNER OF MLK JR. WAY AND ROSE STREET

SIZE: ±3,500 SF Building
(per county records)

LOT SIZE: ±4,500 SF
(per county records)

APN: 059-2269-32

YEAR BUILT: 1925

SALE PRICE: \$1,250,000

4 COMMERCIAL SPACES:

1409: ±1,320 rsf

1411: ±425 rsf

1413: ±425 rsf

1415: ±1,058 rsf



SPACE 1409 – Smiles Handcrafted



SPACE 1411 – Natural Selection



SPACE 1413 – Organicare Spa



SPACE 1415 – Small Talk City



Walk Score
93



Bike Score
93

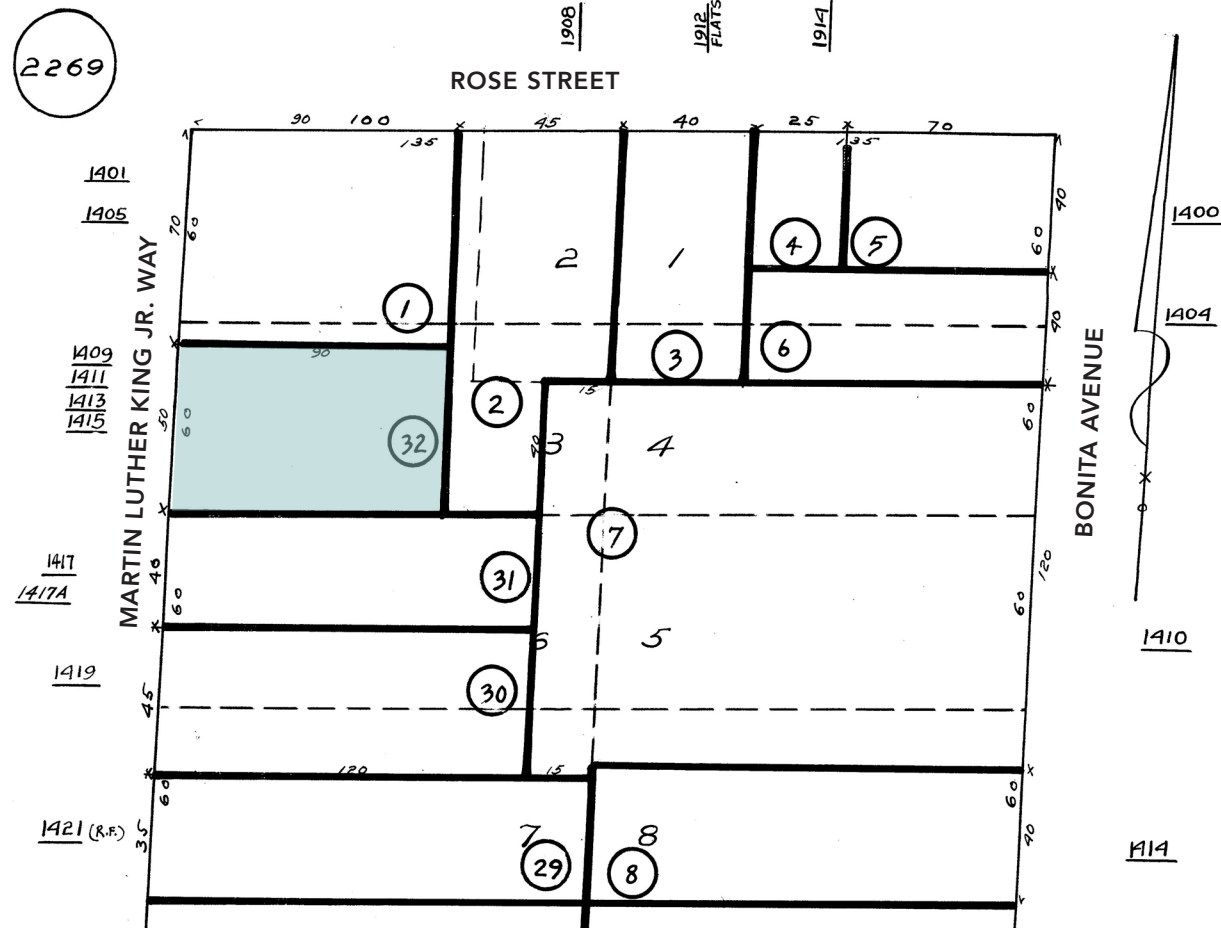


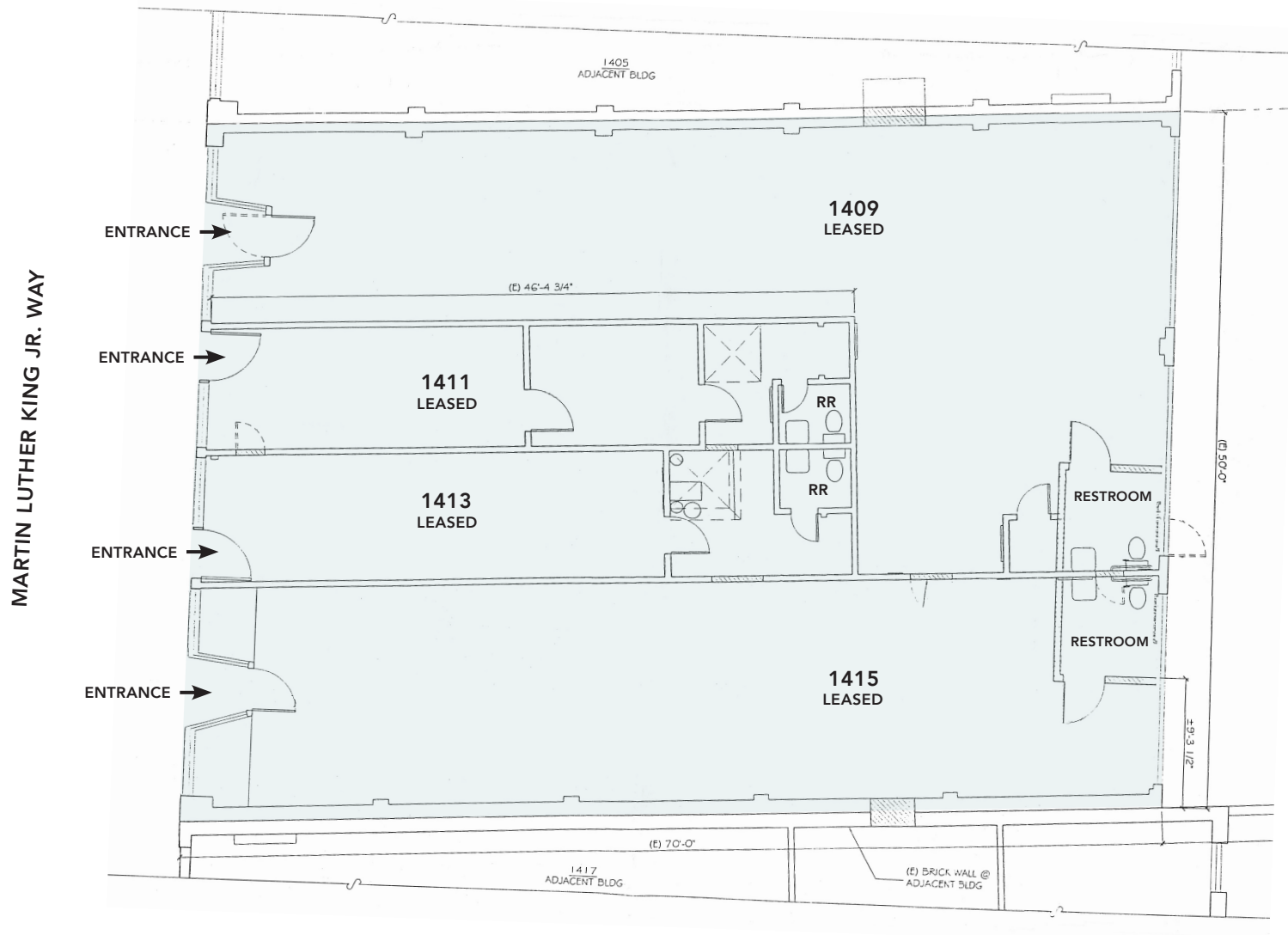
Near Popular
Eateries



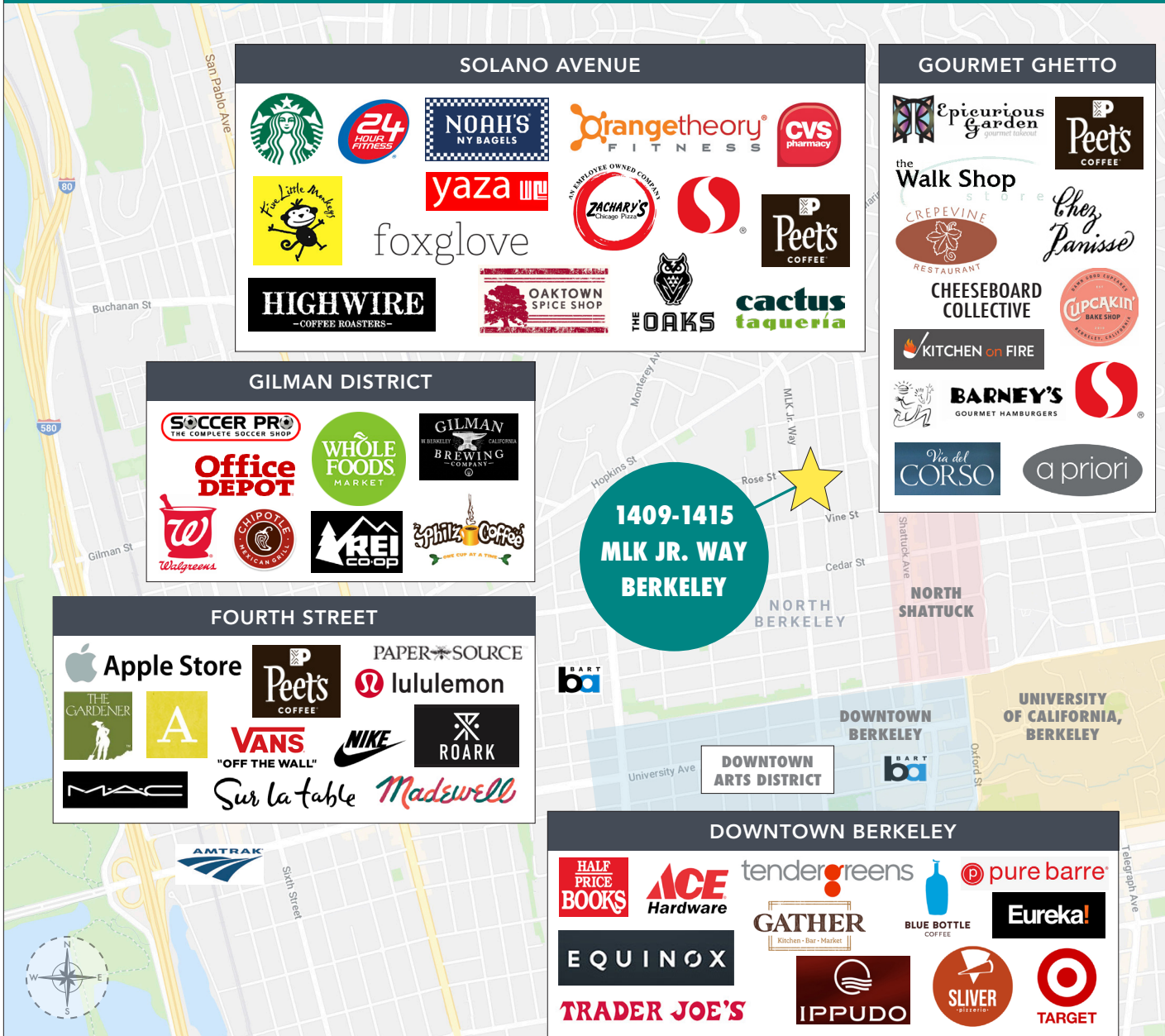
Good
Transit

- All units currently leased
- 50' of street frontage on busy MLK Jr. Way
- Single story building. Wood frame with stucco construction
- 4 retail spaces
 - High ceilings
 - Many with skylights
 - Partial renovation completed in 2011, adding 2 ADA restrooms
- Electricity separately metered
- Single water meter
- Zoned: C-N (Neighborhood Commercial District)
- Adjacent to Mr. Mopps' Toy Shop
- Across from FatApple's Restaurant & Bakery
- Just 2 blocks to North Shattuck's culinary destinations and boutique shops
- High traffic count on MLK Jr. Way (at Vine Street) is 22,531





THIS DRAWING IS INTENDED TO BE USED AS AN AID FOR PLANNING. THOUGH CARE WAS TAKEN IN DRAWING THIS FLOOR PLAN, ACCURACY IS NOT GUARANTEED.



"NORTH BERKELEY IS ONE OF THE BEST PLACES TO LIVE IN CALIFORNIA" – NICHE

- 2 blocks to North Berkeley's famous culinary neighborhood filled with popular cafés and shops sharing an emphasis on quality, artisan products and services
- Popular nearby eateries include FatApple's, Crepevine, Saul's Delicatessen, Via del Corso, Chez Panisse, Cheeseboard Collective, Cupcakin' Bakeshop, Guerilla Cafe, Epicurious Garden, and Barney's Gourmet Hamburgers
- Close to Walnut Square shops with the original Peet's Coffee, The Walk Shop, Bryn Walker, A Priori, Dimples, and Healthy Spot Pet Store
- .8 mile to Downtown BART Plaza and UC Berkeley campus
- .7 mile to North Berkeley BART
- Easy street parking
- Near weekly Farmer's Market (every Thursday)
- Amid exceptional arts and cultural activities, strong commercial/financial core, outstanding education and resources

DEMOGRAPHICS	1 MILE	3 MILE
Population	38,180	188,867
Households	17,210	78,880
Average HH Income	\$128,792	\$140,439
Daytime Employees	19,980	123,795

Source: CoStar/Loopnet

GORDON

COMMERCIAL REAL ESTATE BROKERAGE

1409-1415 MARTIN LUTHER KING JR. WAY, BERKELEY, CA
NEIGHBORHOOD



The information contained herein has been provided by the owner of the property or other sources we deem reliable. We have no reason to doubt its accuracy, but we cannot guarantee it. All information should be verified prior to sale.