



**RELIANT** | REAL ESTATE PARTNERS LLC

For Lease

164,500 SF

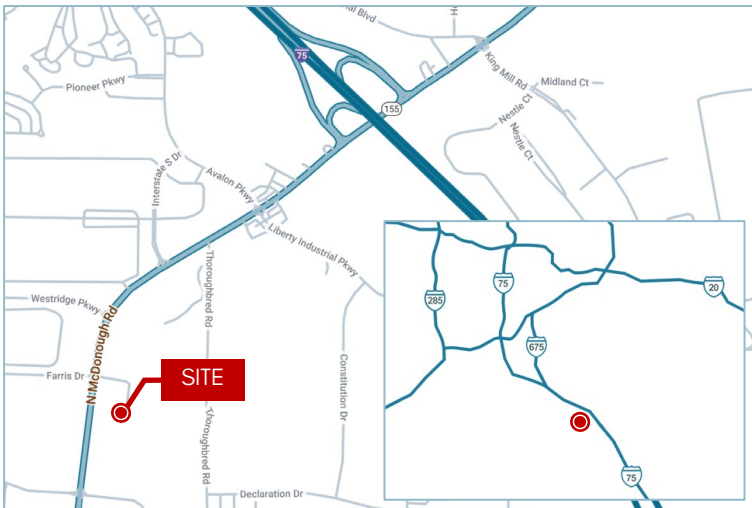
INDUSTRIAL SPACE AVAILABLE



**Property Info**

1325 Highway 155 S  
McDonough, Georgia 30253

Total Building:	164,500 SF
Total Office:	6,932 SF
Main:	5,332 SF
Shipping:	1,600 SF
Clear Height:	28'
Sprinkler:	ESFR
Dock Doors:	18 (w/ 35k lb. pit levelers)
Drive-In Doors:	1 Oversized
Year Built:	1995, Expanded in 2006
Power:	480/277v, 1,600 amps



**Broker Info**

**Adam Richards**

D: (404) 760-7181  
M: (404) 213-4287  
arichards@reliant-re.com

**Mike Weinberger**

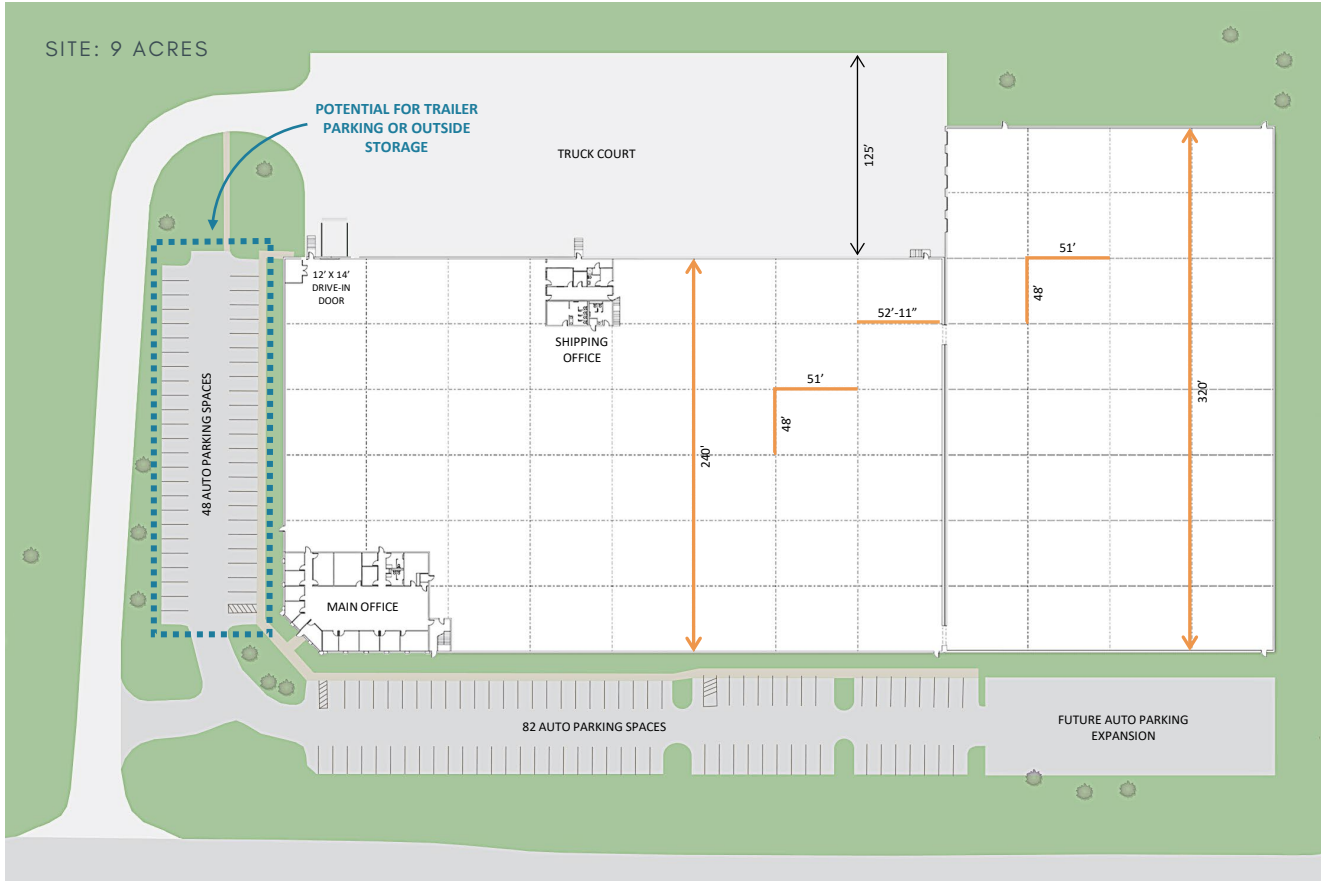
D: (404) 760-7183  
M: (770) 891-7235  
mweinberger@reliant-re.com

**Drew Venable**

D: (404) 760-7186  
M: (229) 392-8745  
dvenable@reliant-re.com

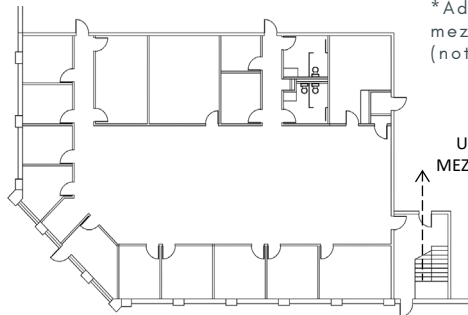


Site Plan



Main Office

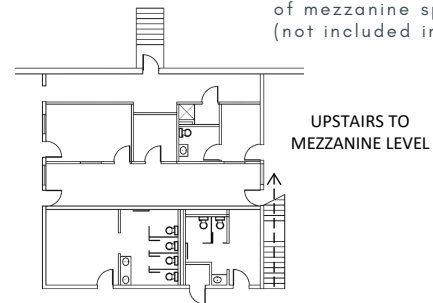
5,332 SF\*



\*Additional 5,000 SF of mezzanine office space (not included in SF)

Shipping Office

1,600 SF\*



\*Additional 1,600 SF of mezzanine space (not included in SF)

Broker Info

Adam Richards

D: (404) 760-7181  
M: (404) 213-4287  
arichards@reliant-re.com

Mike Weinberger

D: (404) 760-7183  
M: (770) 891-7235  
mweinberger@reliant-re.com

Drew Venable

D: (404) 760-7186  
M: (229) 392-8745  
dvenable@reliant-re.com



This document has been prepared by Reliant Real Estate Partners, LLC for advertising and general information only. Reliant Real Estate Partners, LLC makes no guarantees, representations, or warranties of any kind, expressed or implied, regarding the information including, but not limited to, warranties of content, accuracy, and reliability. Any interested party should undertake their own inquiries as to the accuracy of the information. Reliant Real Estate Partners, LLC excludes unequivocally all inferred or implied terms, conditions and warranties arising out of this document and excludes all liability for loss and damages arising therefrom. This publication is the copyrighted property of Reliant Real Estate Partners LLC and/or its licensor(s). © 2024 All rights reserved.

## Broker Info

**Adam Richards**

D: (404) 760-7181  
M: (404) 213-4287  
arichards@reliant-re.com

**Mike Weinberger**

D: (404) 760-7183  
M: (770) 891-7235  
mweinberger@reliant-re.com

**Drew Venable**

D: (404) 760-7186  
M: (229) 392-8745  
dvenable@reliant-re.com



**Drive Time**

I-75 (Exit 216) via Highway 155  
1.1 miles | 5 minutes

**SITE LOCATION**



1325 Highway 155 S  
McDonough, GA 30253



Interstate 75: 1.1 miles  
Interstate 675: 11.7 miles  
Interstate 85: 25.5 miles  
Interstate 285: 26.9 miles



CSX / Hulsey: 30.1 miles  
CSX / Fairburn: 34.5 miles  
NFS / Inman: 37.8 miles  
NFS / Austell: 50.2 miles



Hartsfield-Jackson  
International  
Airport: 24.4 miles



Port of Savannah: 219 miles  
Port of Brunswick: 280  
Port of Charleston: 300 miles

**DAYS TRUCK  
DRIVE TO /  
FROM  
ATLANTA**



**Broker Info**

**Adam Richards**

D: (404) 760-7181  
M: (404) 213-4287  
arichards@reliant-re.com

**Mike Weinberger**

D: (404) 760-7183  
M: (770) 891-7235  
mweinberger@reliant-re.com

**Drew Venable**

D: (404) 760-7186  
M: (229) 392-8745  
dvenable@reliant-re.com