



**108 ACRES FOR SALE OFF COUNTY ROAD  
1040, MIDLAND, TX! DEVELOPMENT  
OPPORTUNITY!**



**FOR SALE**

---

**0000 COUNTY  
ROAD 1040  
MIDLAND, TX  
79706**

---

**CONTACT**

**THOMAS JOHNSTON**

**432-934-3333**



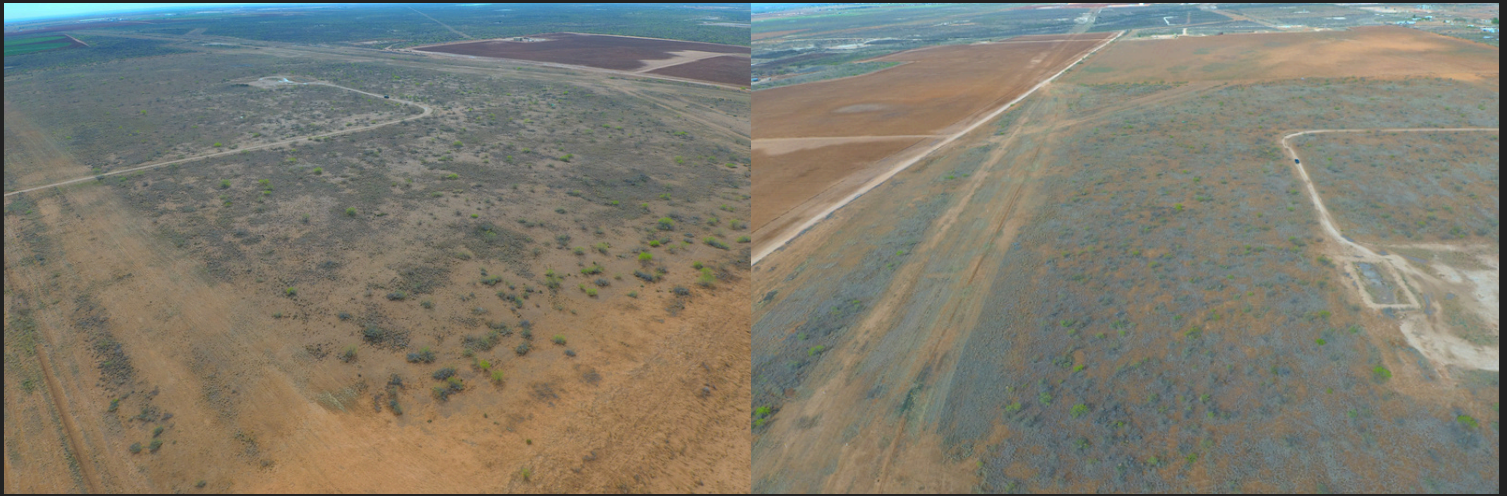
# HIGHLIGHTS

*The Real Estate Ranch*

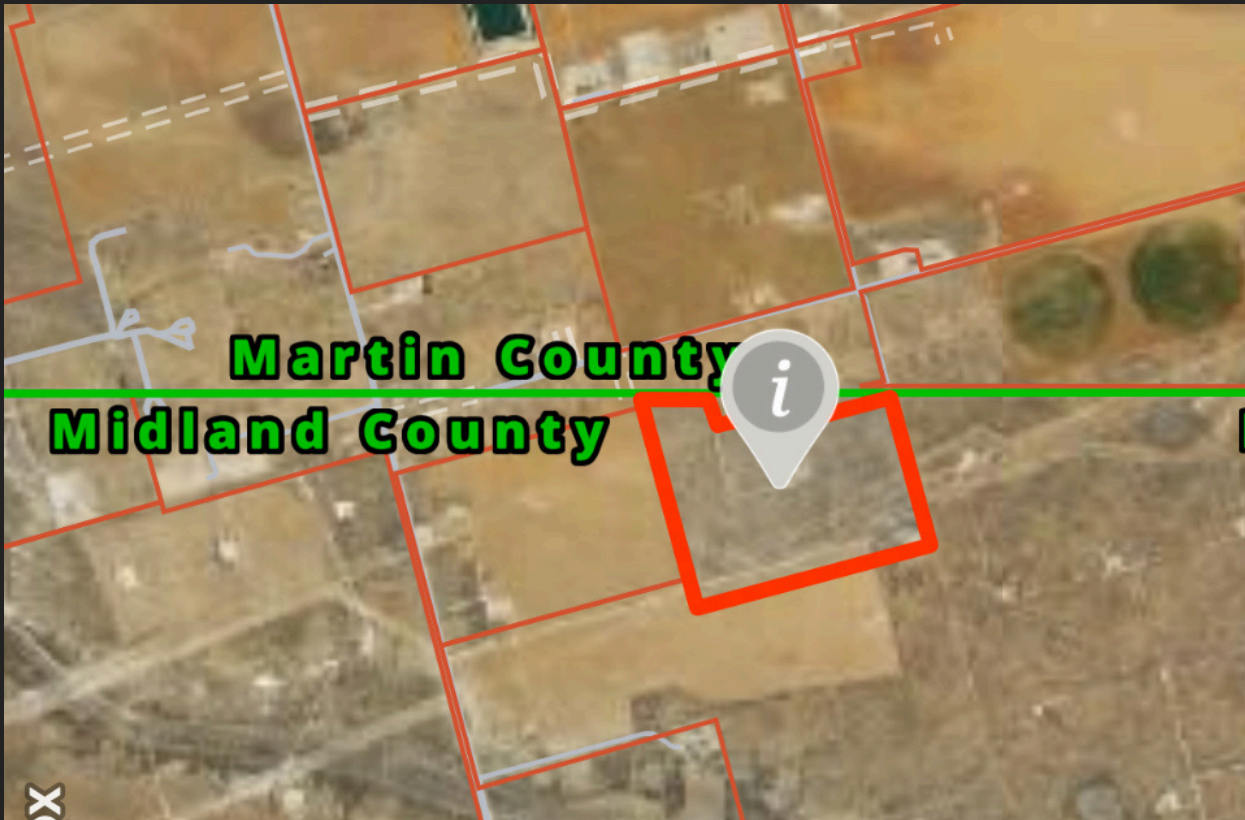
- UNRESTRICTED DEVELOPMENT TRACT
- GREENWOOD SCHOOL DISTRICT
- POTENTIAL DEVELOPMENT FOR RV PARK, DIRTBIKES, DIRT / CALICHE, WATER SALES, UNLIMITED OPTIONS



# Description

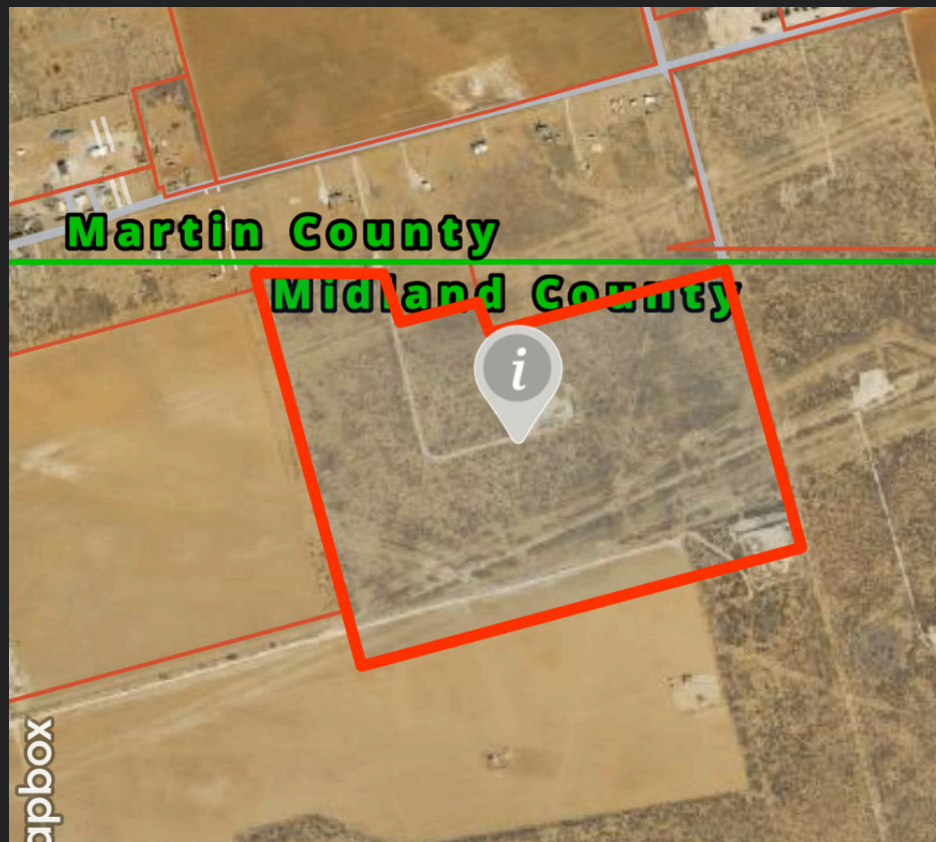


**Greenwood 108 is a Great "Unrestricted" Development Tract Great for RV Park, Dirtbikes, Dirt / Caliche, Water Sales, Unlimited Options Located in Greenwood just South of I-20 On CR 1900 Close to CR 1040. has an Unpaved ROW on CR 3201 comes in from the North. 3 Phase Electric runs along the East Fenceline with an underground drop to center of land, the West side has a single phase going to a neighboring tract to the North. I found Buck tracts in the SE/4 which is not too far from the Houston Draw, Bobcat & Coyote Tracts were all over the land, & a Great Quail population lives out here. This Tract may be Split Many Ways with Splitting it up**



## Directions

Close to County Road 1040, has a unpaved entrance off County Road 3201.



# SITE PHOTOS:

*the Real Estate Ranch*



# *the Real Estate Ranch*

**6413 N Hwy 349  
Midland, TX 79705**



**Presented By  
Thomas Johnston**

**432-934-3333**

**THE REAL ESTATE RANCH**

**432-688-8200**