



FOR LEASE



PETRA PLAZA

Multi Tenant Building

2,944 SF or 3,942 SF | \$2.50 SF/month (Full Service)

2720 Commercial St SE, Salem OR

- Ample parking - High traffic location
- Tremendous signage available
- Solar powered - Thoughtfully space planned
- Move-in ready for medical uses

NICK WILLIAMS, CCIM

Vice President | Licensed in OR

503-569-4449

nick.williams@capacitycommercial.com

CURT ARTHUR, SIOR

Principal | Licensed in OR

503-559-7990

curt.arthur@capacitycommercial.com

TORAN SCHMIDGALL

Associate Broker | Licensed in OR

503-932-1969

toran.schmidgall@capacitycommercial.com



PROPERTY SUMMARY

FOR LEASE



PROPERTY DETAILS

Address	2720 Commercial St SE, Salem OR
Available Space	2,944 SF or 3,942 SF
N° of Suites Available	2 Suites
Lease Rate	\$2.50 SF/month (Full Service)
Property Type	Office
Year Built	2000
Building Size	15,015 SF

Property Description

Petra Plaza was constructed as a single tenant medical office in 2000. Environmentally conscious tenants will appreciate the fact that it is powered primarily through solar panels. Having undergone renovation in 2010, this medical office property now is a multi tenant building, with one suite available on the upper floor and one on the lower level. Current tenants include a national oncology clinic and a local information technology firm. Leases are being offered as full service, base year.

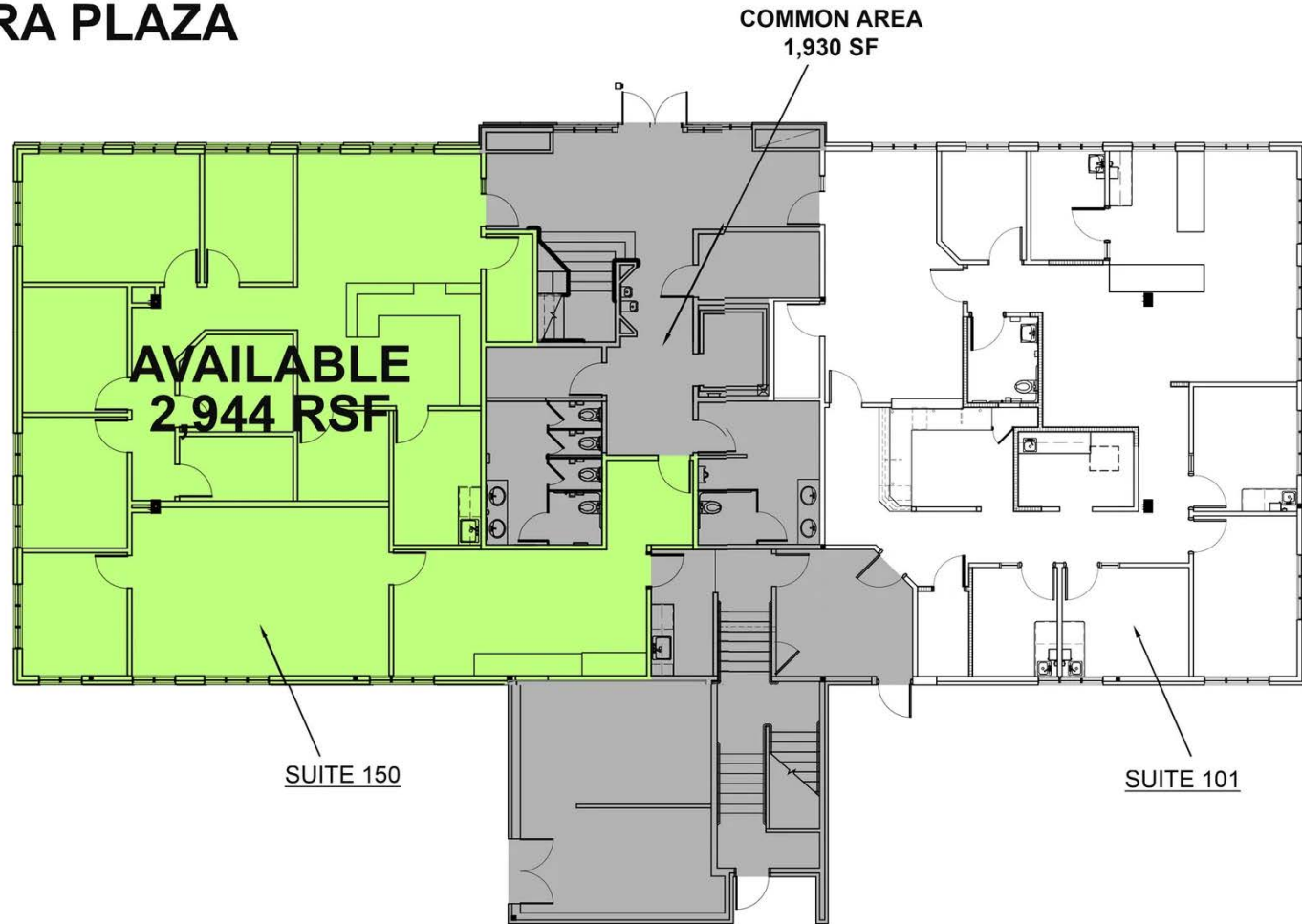
Location Description

Petra Plaza is situated along one of the community's most highly coveted commercial corridors, which has historically strong demographics. Medical and conventional office users will be attracted to this property due to its ADA compatibility being fully elevator-served, and a very usable floor plan. Easy ingress & egress, robust parking, and modern construction. Abundant nearby services and served frequently by Cherriots route 21.



SUITE 150 FLOOR PLAN

PETRA PLAZA

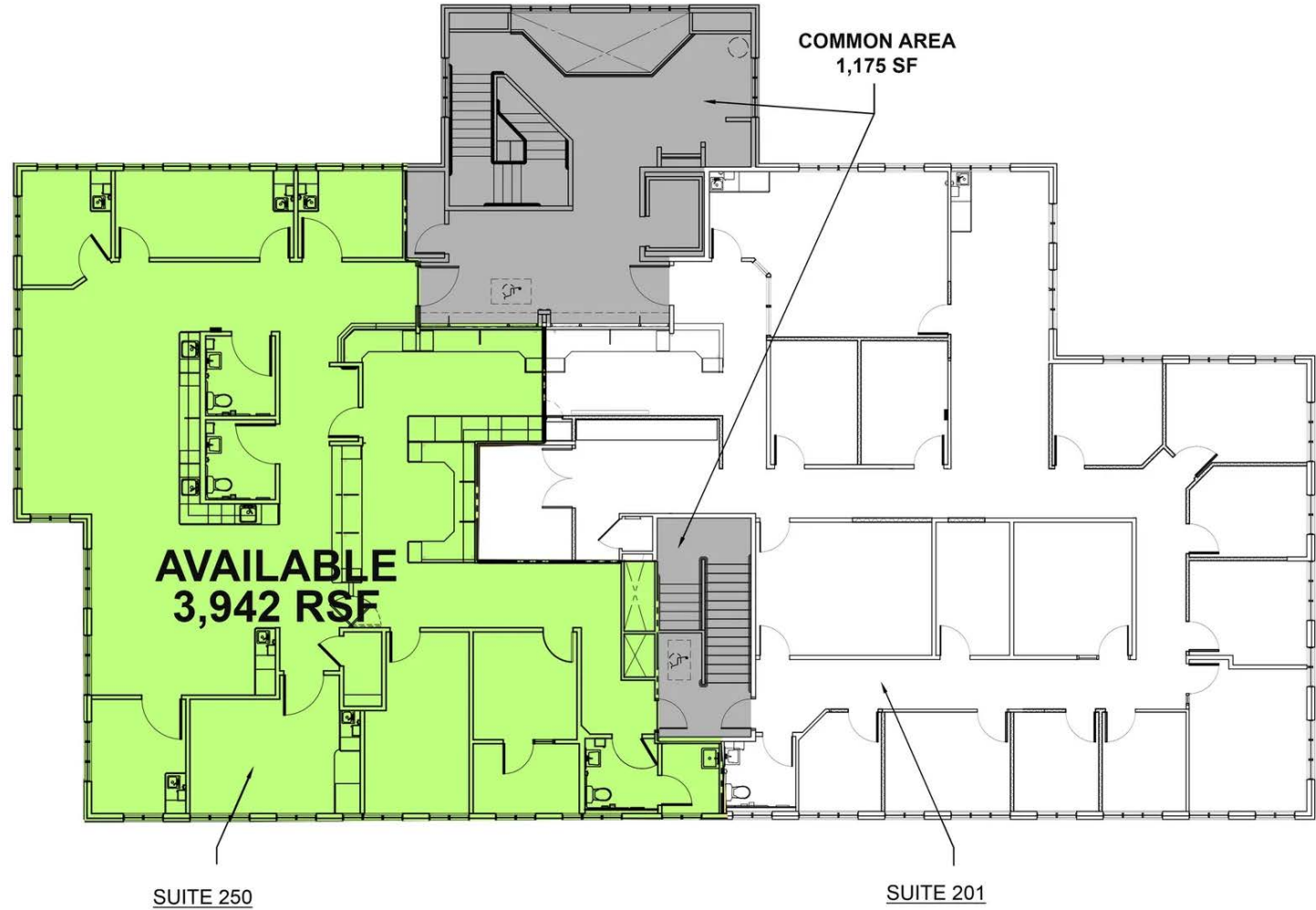


SUITE 250 FLOOR PLAN



FLOOR PLAN

PETRA PLAZA



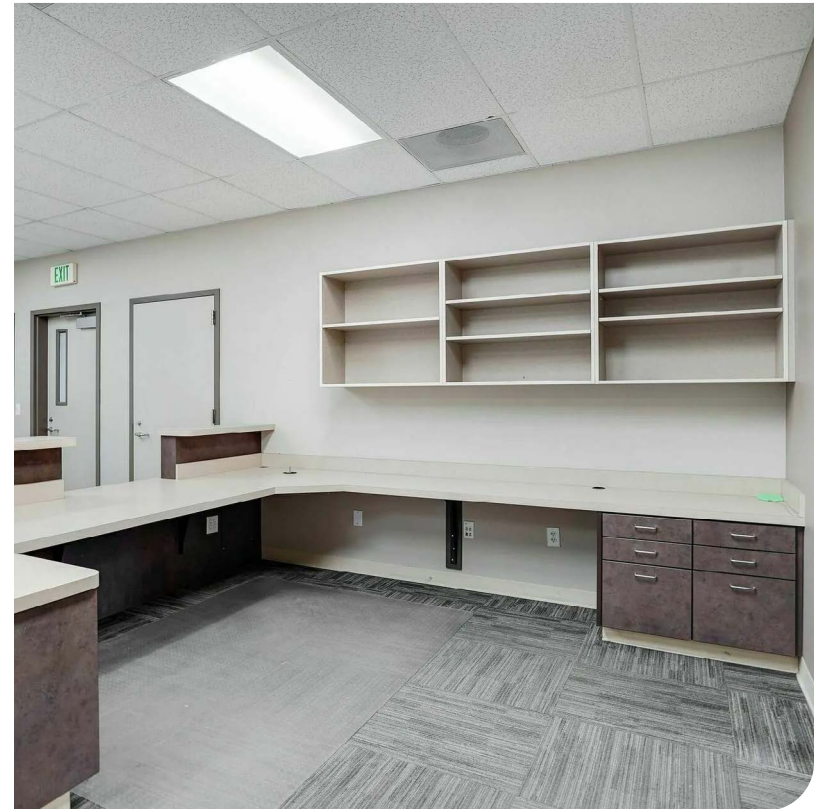
1 SECOND FLOOR
SCALE: NTS

8,447 GSF





INTERIOR PHOTOS





LOCAL AERIAL MAP



*Average Daily Traffic Volume | Traffic Counts are Provided by REGIS Online at SitesUSA.com ©2025 | Map data ©2025 Google Imagery ©2025, Airbus, CNES / Airbus, Maxar Technologies, Metro, Portland Oregon, Public Laboratory, State of Oregon, U.S. Geological Survey, USDA/FPAC/GEO

<p>NICK WILLIAMS, CCIM Vice President Licensed in OR 503-569-4449 nick.williams@capacitycommercial.com</p>	<p>CURT ARTHUR, SIOR Principal Licensed in OR 503-559-7990 curt.arthur@capacitycommercial.com</p>	<p>TORAN SCHMIDGALL Associate Broker Licensed in OR 503-932-1969 toran.schmidgall@capacitycommercial.com</p>
---	--	---